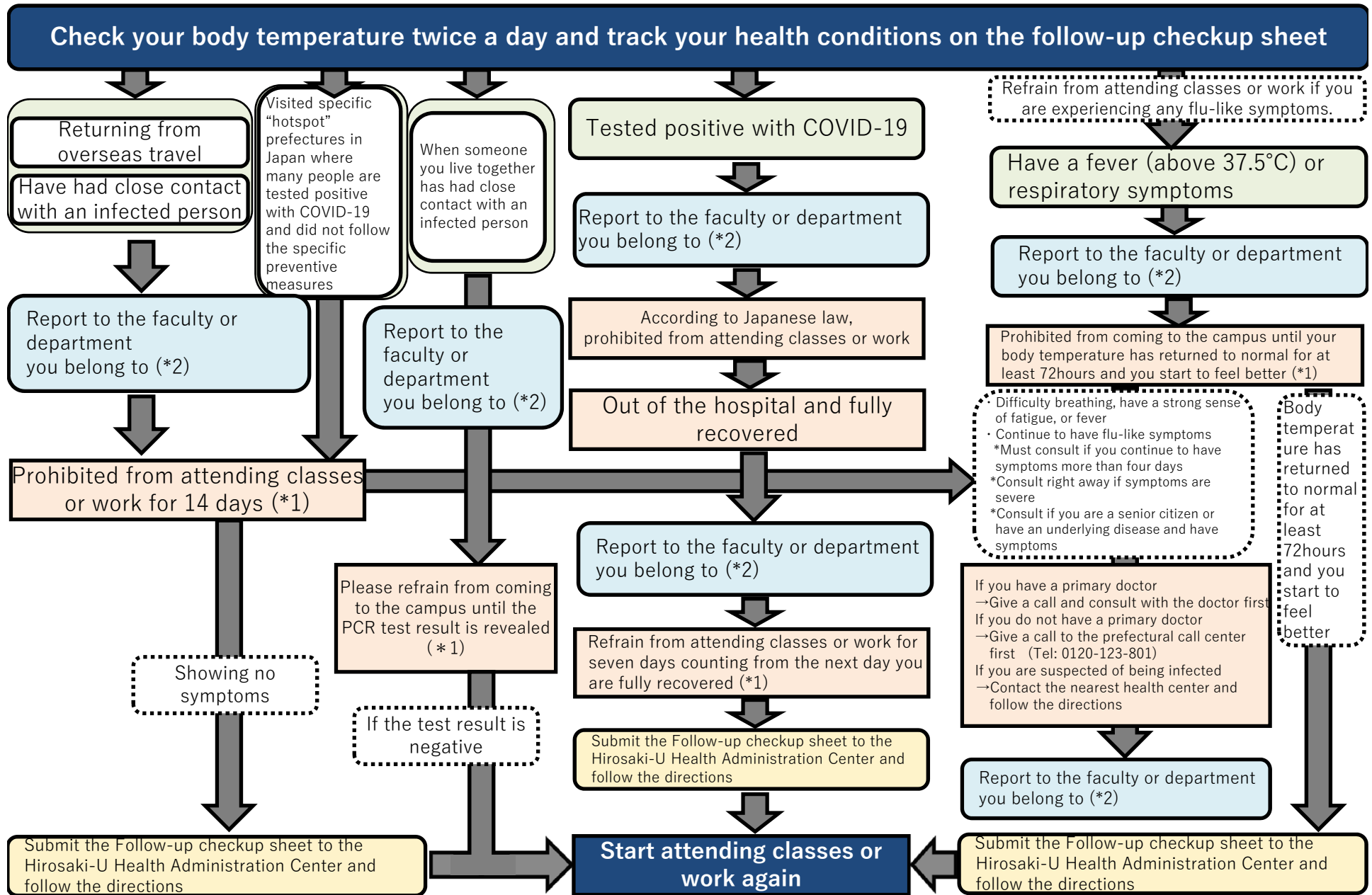


Chart: Monitoring your health and when not to come to the campus (As of January 8th, 2021)



\* 1 When you are prohibited or refrained from coming to the campus and go see a doctor, contact the nearest health center first and follow the directions given by them.

When you personally feel the need of seeing a doctor, please call the clinic first and visit them.

\* 2 When you hear from students, staffs at each faculties and departments should report to the Hirosaki-U Health Administration Center.