



2025
HIROSAKI UNIVERSITY
Overview



IDEALS AND PRINCIPLES • FUNDAMENTAL GOALS

Ideals and Principles

Hirosaki University has, in the spirit of the Basic Act on Education, established the following institutional goals: 1) to incorporate extensive bodies of knowledge into our campus culture; 2) to engage in the teaching of and research in a broad range of specialized scholarly fields; 3) to educate persons of character and integrity who can contribute to human culture.

Future Vision of Hirosaki University

Basic Principles

Hirosaki University, under the slogan of “Communicating with the world; Creating with our community,” has positioned the four themes of renewable energy, the environment, radiation emergency medicine, and food, which are also the “strengths” of the region, as priority areas for the university, and has promoted education and research as well as regional cooperation. In the 3rd Midterm Target Period, the University carried out innovative research that focused on regional characteristics and has also achieved solid results in education and research, internationalization, and administration. In the 4th Midterm Target Period, our basic policy will be to contribute to the revitalization of the region and drive the sustainable development of the entire regional society by creating more value to the “strengths” of the university that we have accumulated so far, while accurately taking into account the needs of the region and national policies.

In response to the major social changes triggered by the new COVID-19 pandemic, we will promote the creation of regional innovations, develop human resources, and based on our distinctive world-class research capabilities encourage research and development that will lead the way in social reform and for regional development.

In addition, we will accelerate our transformation into a “regional national university with distinctive characteristics” with the aim of further developing our university as a regional “knowledge” center. To this end, we will reorganize and strengthen the functions of our education and research organizations, reform our entrance examinations to cope with the declining birthrate, reform our education to make it more student-centered and promote new internationalization for life after COVID-19.

Furthermore, Japan has an ageing society, a low birthrate as well as a shortage of medical doctors in rural areas and these factors hinder the development of local regions. In Aomori Prefecture, where the population is ageing rapidly, the University has taken the lead in providing regional medical care, and will collaborate with local governments to establish a new, sustainable regional medical care delivery system that will serve as the foundation for regional development.

In order to realize the above initiatives, the University, under the leadership of the President with a medium- to long-term perspective, will implement bold and strategic management and administrative reforms unconstrained by conventional ways of thinking.

Educational Reform

In this new version of society, Society 5.0, emotional intelligence, communication skills, and creativity will become essential skills for the future. In addition to these skills, we will promote educational reforms to cultivate students’ knowledge across the humanities and sciences, so they can respond flexibly to the changes in the global society and engage in regional development.

Based on the starting point of learner-centered education, we will actively use Institutional Research (IR) for teaching and learning, introduce mathematical and data science education throughout the university, improve faculty development (FD) programs, make learning outcomes more visible to the students, and further strengthen various types of support for students.

In addition, we will strive to secure a diverse range of student applicants by examining admission methods based on the results of previous entrance examinations and by improving the publicity of the entrance examinations.

Promotion of Research

We will promote research that is done at the international level, opens up new fields of research, and protects and enriches the region. In this context, we will strengthen our research capabilities based on the following perspectives: support for young and female researchers, attain competitive research funds, create and put to use intellectual property, promote international joint research, and develop researchers at the University.

In addition, we will promote research in the following areas: the environment, energy, radiation, food and nature, extending the health and life expectancy of local residents, improving regional power, and utilizing cultural resources, which are positioned as important themes of the University.

Internationalization of the University

Internationalization is an essential element for universities as institutions of higher education. Aomori Prefecture, which is ambitiously developing a focus on “agriculture, forestry, and fisheries,” is also seeking talented individuals with a global perspective to expand exports of agriculture, forestry, and fisheries products abroad, and working together with the local community, the University aims to cultivate such global-minded individuals to drive these industries into the future.

In addition to bidirectional study-abroad programs between Hirosaki University and overseas partner universities (international exchange), we will work to improve the environment for international education and research through online collaboration to further internationalize the University in the post-COVID-19 era, and promote international initiatives linked to the local community.

Regional Cooperation and Regional Contribution

The University will promote education and research that are useful for solving regional issues and that can be implemented to improve society. To accomplish this, the University aims to cultivate students who will be able to lead the local regions forward into the future, promote regional establishments, and create new innovations that will benefit society and the local regions.

As “a university that supports the region and is supported by the region,” we will further strengthen our relationships with other universities, local governments, and industries that have been cultivated to date, and we will continue to play a leading and central role in promoting contributions to the region, thereby revitalizing the region and achieving regional development.

Administrative Management

The University aims to strengthen governance by moving forward in unison, with the President exercising leadership and the entire university having a common understanding of the university’s goals and plans regarding education, research, community contributions, advanced medical care, etc. From this point of view, we will continually review the University’s management and administration system, administrative organization, and methods of performing duties. Moreover, as a core part of management, the University will also continually aim to strengthen its financial situation.

Education/Research Organization

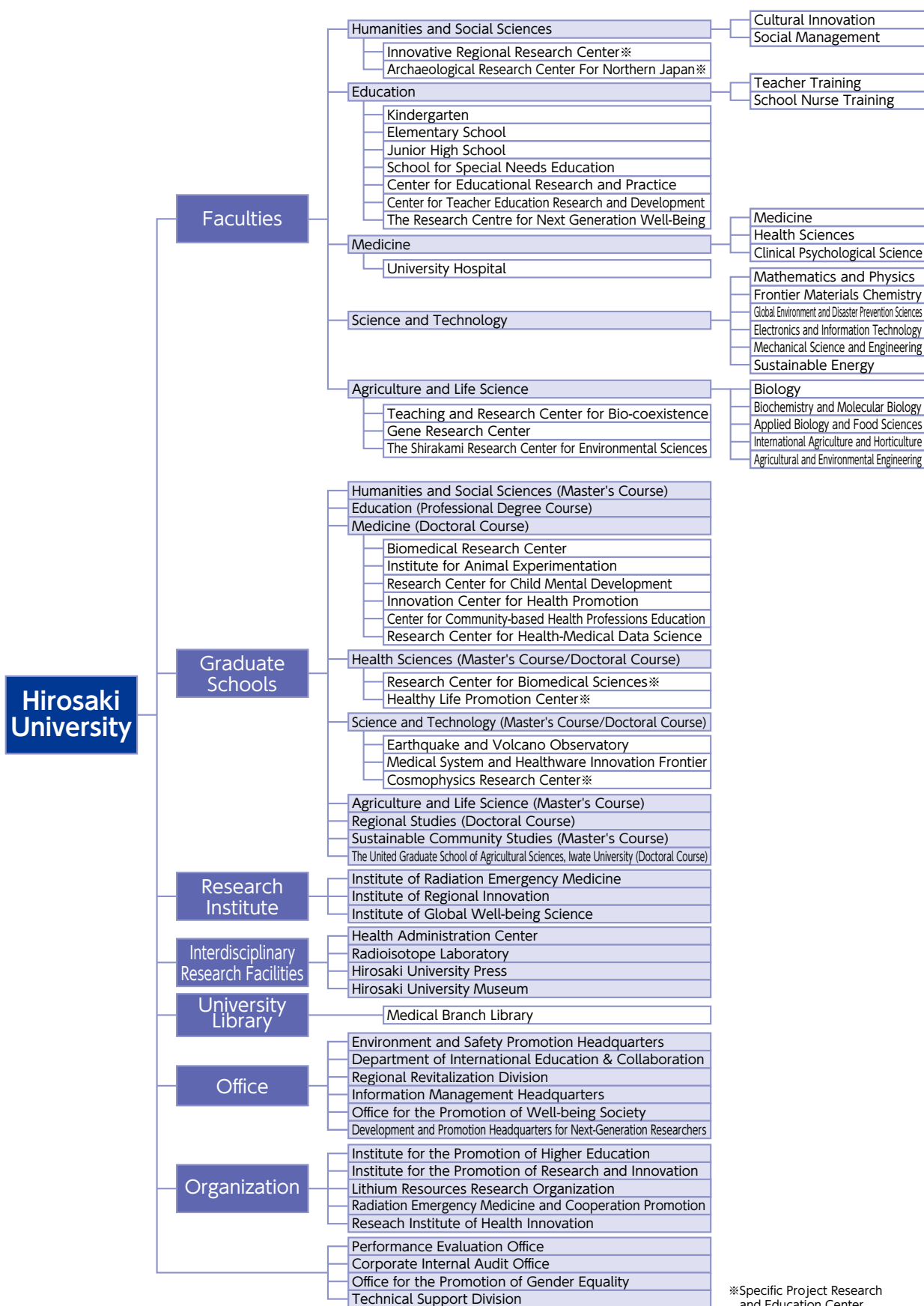
We will examine the reorganization of faculties, graduate schools, and research institutes implemented during the 3rd Midterm Target Period, and continually promote reforms to maintain the basic academic disciplines necessary as an institution of higher education and to improve the overall functionality of the University. As for the future reorganization of education and research organizations, we will also review the nature of the faculty organizations that support them.

Medical Care

As a key contributor to the medical care in the region, the University will continue to provide specialized and advanced state-of-the-art medical care and promote medical support to remote areas by utilizing information and communication technology.

In addition, in order to foster various medical personnel including doctors, and to research and develop advanced medical technology through clinical research, we will strengthen our functions as an educational and research institution and further strengthen our management base to promote the facility improvement plan.

ACADEMIC ORGANIZATION



※Specific Project Research and Education Center



Hirosaki University Logo

■ Established July 24, 2006

■ Concept: The university's logo takes cherry blossoms, for which Hirosaki City has great pride, as its motif. Blossoms representing each of five faculties are gathered together into one large blooming flower, facing the future. The circle in the center of the logo stands for the Earth, and expresses how graduates of Hirosaki University will make outstanding contributions to business and research, helping to make the world go round. In addition, the five different colors represent the different faculties: red for Medicine, orange for Education, green for Agriculture & Life Science, blue for Science & Technology, and purple for Humanities and Social Sciences. The image of the flowers scattered around the Earth like satellites also carries the meaning of Hirosaki University becoming a beacon for the region. Taken as a whole, the logo was designed to have a colorful, modern feel, brimming with freshness, vigor, and the energy of an enjoyable campus life.

President, Executive Director, Auditor

As of May 1, 2025

President		Executive Director		Auditor		Assistant to the President		Vice Executive Director		Total		Grand Total
M	F	M	F	M	F	M	F	M	F	M	F	
1		7(1)		1	1(1)	3(2)		6(4)	1	18(7)	2(1)	20(8)

Note: Part-time positions are shown in () and are included in the total number.

Note: For Assistants to the President and Vice Executive Directors, numbers include cases where one person holds more than one position.

Divisions	Professors		Associate Professors		Lecturers		Assistant Professors		Research Associates		Teachers at Attached Schools		Total		Other Staff		Total		Grand Total
	M	F	M	F	M	F	M	F	M	F	M	F	M	F	M	F	M	F	
The Number of Present Employees	175	26	162	36	62	14	170	74	27	19	39	51	635	220	385	829	1,020	1,049	2,069
Administration Bureau													0	0	106	57	106	57	163
Faculty of Humanities and Social Sciences	15	4	23	3	2		9	6					49	13	5	5	54	18	72
Faculty of Education	27	5	24	8	4	1	11	5			39	51	105	70	6	8	111	78	189
Graduate School of Medicine	38	2	29	3	16	1	47	13	13	10			143	29	17	7	160	36	196
Graduate School of Health Sciences	16	12	10	7	6	3	14	17	3	4			49	43	7	4	56	47	103
University Hospital			9	1	28	8	46	21	10	4			93	34	204	717	297	751	1,048
Graduate School of Science and Technology	42	1	31	5	3		18	4	1				95	10	13	9	108	19	127
Faculty of Agriculture and Life Science	26	2	30	2			14	5					70	9	13	8	83	17	100
Graduate School of Regional Studies	3		1										4	0			4	0	4
Institute of Radiation Emergency Medicine	4		1	1			2						7	1	2	1	9	2	11
Institute of Regional Innovation													0	0	1	2	1	2	3
Health Administration Center	1			1		1							1	2		2	1	4	5
Radioisotope Laboratory													0	0	1	1	1	1	2
University Library													0	0	6	5	6	5	11
Department of International Education & Collaboration			1	3				1					1	4	3	3	4	7	11
Regional Revitalization Division			1										1	0			1	0	1
Institute for the Promotion of Higher Education			1	2	1		3	1					5	3			5	3	8
Institute for the Promotion of Research and Innovation					2		2						4	0			4	0	4
Lithium Resources Research Organization	1		1				2						4	0			4	0	4
Radiation Emergency Medicine and Cooperation Promotion	1						1						2	0	1		3	0	3
Research Institute of Health Innovation	1						1		1				2	1			2	1	3
Office for the Promotion of Gender Equality								1					0	1			0	1	1

Note: The number of staff working for the Corporate Internal Audit Office are included in the number working for the Administration Bureau.

Note: The number of staff working for the Graduate School of Sustainable Community Studies and the Graduate School of Regional Studies are included in the number working for the Faculty of Humanities and Social Sciences.

Undergraduates

As of May 1, 2025

Faculties	Departments and Courses	Annual Admission Capacity	Transfer Student	Second Year	Third Year	Enrollment Capacity	Actual Enrollment																										
							1st Year			2nd Year			3rd Year			4th Year			5th Year			6th Year			Grand Total								
							M	F	Sub Total	M	F	Sub Total	M	F	Sub Total	M	F	Sub Total	M	F	Sub Total	M	F	Sub Total	M	F	Sub Total	M	F	Total			
Humanities and Social Sciences	Cultural Innovation	110			440	42	85	127	44	74	118	39	79	118	44	83	127							169	321	490							
	Social Management	155			620	79	97	176	85	79	164	86	78	164	99	89	188							349	343	692							
	Total	265			1,060	121	182	303	129	153	282	125	157	282	143	172	315							518	664	1,182							
Humanities	Economics and Commercial Sciences							-			-			-	1	0	1							1	0	1							
	Total				0	0	0	0	0	0	0	0	0	0	1	0	1							1	0	1							
Education	Teacher Training Division	140			560	62	86	148	58	91	149	62	84	146	75	92	167							257	353	610							
	School Nurse Training Division	20			80	0	22	22	0	17	17	0	22	22	0	24	24							0	85	85							
	Total	160			640	62	108	170	58	108	166	62	106	168	75	116	191							257	438	695							
Medicine	Medicine	112	20		772	51	66	117	77	64	141	81	61	142	64	59	123	92	51	143	65	49	114	430	350	780							
	Health Sciences	200		30	860	61	149	210	67	145	212	68	137	205	71	151	222							267	582	849							
	Clinical Psychological Science	10			40	1	9	10	1	10	11	1	9	10	2	10	12							5	38	43							
	Total	322	20	30	1,672	113	224	337	145	219	364	150	207	357	137	220	357	92	51	143	65	49	114	702	970	1,672							
Science and Technology	Mathematics and Physics	78		2	316	68	14	82	68	11	79	68	8	76	75	7	82							279	40	319							
	Frontier Materials Chemistry	52		1	210	37	15	52	37	15	52	35	17	52	50	13	63							159	60	219							
	Global Environment and Disaster Prevention Sciences	65		2	264	40	32	72	49	18	67	47	16	63	59	12	71							195	78	273							
	Electronics and Information Technology	55		2	224	52	6	58	54	4	58	53	6	59	60	5	65							219	21	240							
	Mechanical Science and Engineering	80		2	324	77	12	89	72	8	80	76	5	81	93	4	97							318	29	347							
	Sustainable Energy	30		1	122	24	6	30	25	5	30	26	2	28	30	4	34							105	17	122							
	Total	360		10	1,460	298	85	383	305	61	366	305	54	359	367	45	412							1,275	245	1,520							
Agriculture and Life Science	Biology	40			160	30	15	45	34	10	44	23	15	38	35	8	43							122	48	170							
	Biochemistry and Molecular Biology	40			160	27	17	44	25	18	43	24	17	41	24	24	48							100	76	176							
	Applied Biology and Food Sciences	55			220	26	34	60	29	29	58	21	36	57	42	20	62							118	119	237							
	International Agriculture and Horticulture	50			200	33	24	57	34	19	53	31	23	54	37	25	62							135	91	226							
	Agricultural and Environmental Engineering	30			120	29	4	33	26	9	35	23	6	29	30	7	37							108	26	134							
	Total	215			860	145	94	239	148	85	233	122	97	219	168	84	252							583	360	943							
	Grand Total	1,322	20	40	5,692	739	693	1,432	785	626	1,411	764	621	1,385	891	637	1,528	92	51	143	65	49	114	3,336	2,677	6,013							

Graduate Schools

As of May 1, 2025

Classification			Annual Admission Capacity	Enrollment Capacity	Actual Enrollment														
					1st Year			2nd Year			3rd Year			4th Year			Grand Total		
					M	F	Sub Total	M	F	Sub Total	M	F	Sub Total	M	F	Sub Total	M	F	Total
Humanities and Social Sciences	Master's Course	Humanities and Social Sciences	16	32	9	7	16	10	7	17							19	14	33
Educatoion	Master's Course	Curriculum Studies	18	36	11	9	20	12	8	20							23	17	40
Medicine	Doctoral Course	Medical Science	60	240	38	26	64	30	18	48	39	16	55	92	56	148	199	116	315
Health Sciences	Master's Course	Clinical Psychological Science	6	12	2	5	7	2	5	7							4	10	14
	Master's Course	Health Sciences	30	60	24	11	35	25	17	42							49	28	77
	Doctoral Course	Health Sciences	12	36	8	3	11	11	2	13	16	11	27				35	16	51
Science and Technology	Master's Course	Science and Technology	120	240	133	21	154	119	11	130							252	32	284
	Doctoral Course	Advanced Materials Science and Technology	6	18	4	0	4	4	0	4	5	2	7				13	2	15
		Safety Science and Technology	6	18	3	7	10	6	4	10	4	2	6				13	13	26
		Total	12	36	7	7	14	10	4	14	9	4	13				26	15	41
Agriculture and Life Science	Master's Course	Agriculture and Life Sciences	50	100	31	17	48	33	20	53							64	37	101
Regional Studies	Doctoral Course	Regional Studies	6	18	7	1	8	4	2	6	14	6	20				25	9	34
Sustainable Community Studies	Master's Course	Community Renovation	15	30	13	4	17	9	8	17							22	12	34
		Industry Development Sciences	15	30	4	7	11	7	7	14							11	14	25
		Total	30	60	17	11	28	16	15	31							33	26	59
Grand Total			360	870	287	118	405	272	109	381	78	37	115	92	56	148	729	320	1,049

The United Graduate School of Agricultural Sciences, Iwate University (Doctoral Course)

Current number of students belonging to Hirosaki University (with academic advisors) As of May 1, 2025

Classification			Annual Admission Capacity	Enrollment Capacity	Actual Enrollment														
					1st Year			2nd Year			3rd Year			4th Year			Grand Total		
					M	F	Sub Total	M	F	Sub Total	M	F	Sub Total	M	F	Sub Total	M	F	Total
The United Graduate School of Agricultural Sciences, Iwate University (Doctoral Course)			24	72	8	1	9	3	3	6	7	4	11				18	8	26

Schools Attached to Hirosaki University's Faculty of Education

As of May 1, 2025

Classification		Enrollment Capacity	Classes	Actual Enrollment (in parenthesis)						Total
Fuzoku Schools	Kindergarten	90	4	K1 3-year-olds (9)		K2 4-year-olds (13)		K3 5-year-olds (15)		37
	Elementary School	467	19	Grade 1 (72)	Grade 2 (72)	Grade 3 (72)	Grade 4 (70)	Grade 5 (69)	Grade 6 (84)	439
	Junior High School	384	12	1st Year (127)		2nd Year (127)		3rd Year (128)		382
Special Needs Schools	Elementary School	18	3	Lower Grades (6)		Middle Grades (5)		Upper Grades (6)		17
	Junior High School	18	3	1st Year (6)		2nd Year (6)		3rd Year (5)		17
	Senior High School	24	3	1st Year (5)		2nd Year (6)		3rd Year (8)		19
Total		1,001							911	

International Students

As of May 1, 2025

Classification			Country / Region		U.S.A.	Italy	Indonesia	Canada	Costa Rica	Sri Lanka	Serbia	Thailand	South Korea	Taiwan	China	Germany	New Zealand	Bangladesh	Philippines	Brazil	France	Malaysia	Myanmar	Mexico	Luxembourg	Russia	Total
Faculties and Schools																											
Undergraduates	Japanese Government (※MEXT) Scholarship Regular Students	Science and Technology								1																	1
	Private Regular Students	Humanities and Social Sciences													7							3					10
		Medicine													1												1
		Health Sciences													1												1
		Science and Technology													1							1					2
		Agriculture and Life Science											1					1					1				3
	Private Research Students	Humanities and Social Sciences													10												10
		Education													4												4
	Special Auditors	Humanities and Social Sciences	4	5		2						2	3	4	9	2					3				1	1	36
		Education		3		1								1	16		1				1				1	1	25
		Science and Technology										2			4												6
		Agriculture and Life Science										1	1														2
	Japanese Government (※MEXT) Scholarship Japanese Studies Students	Humanities and Social Sciences						1				1															2
		Education																		1							1
	Japanese Government (※MEXT) Scholarship Teacher Training Students	Education																	1								1
Graduates	Japanese Government (※MEXT) Scholarship Regular Students	Science and Technology			2				1			1															4
		The United Graduate School of Agricultural Sciences																1									1
	Private Regular Students	Humanities and Social Sciences													12												12
		Medicine													13												13
		Health Sciences				3						3															6
		Science and Technology													17												17
		Agriculture and Life Science													9												9
		Regional Studies													6												6
		Sustainable Community Studies												1	13												14
		The United Graduate School of Agricultural Sciences				1									2			2									5
	Private Research Students	Humanities and Social Sciences													1												1
	Special Research Students	Sustainable Community Studies													1												1
Total			4	8	6	3	1	1	1	1	7	7	7	7	127	2	1	4	1	1	4	4	1	1	1	2	194

※MEXT: Ministry of Education, Culture, Sports, Science and Technology

International Academic Exchange Agreements (University-wide Agreements)

As of May 1, 2025

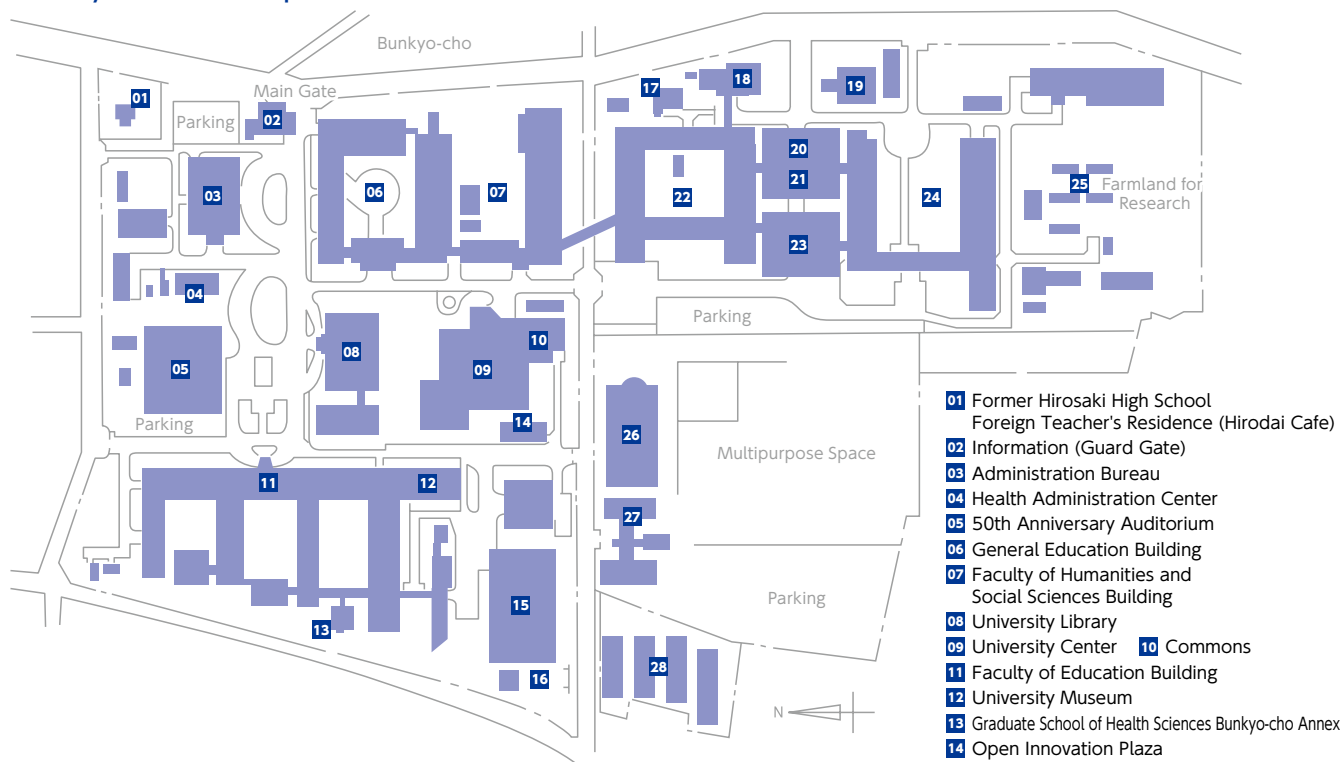
Country / Region		University	Date of Agreement
North America / South America	U.S.A.	University of Tennessee at Martin	July 8, 1980
		University of Maine	June 26, 1997
		San Diego State University	March 19, 2001
		University of Hawai'i Community Colleges	October 30, 2017
		California State University Monterey Bay	May 16, 2022
		Colorado State University	February 5, 2024
		Northwest Missouri State University	September 18, 2024
	Canada	Mount Royal University	June 1, 2005
		Thompson Rivers University	October 19, 2006
	Republic of Chile	University of La Frontera	June 25, 2002
Europe	United Mexican States	The Benito Juarez Autonomous University	May 13, 2016
		The National Autonomous University of Mexico	March 17, 2023
	French Republic	University Bordeaux Montaigne	January 31, 1994
	Russian Federation	Irkutsk State University	March 20, 2002
	Ireland	Environmental Protection Agency	June 13, 2019
	Romania	Hyperion University	September 11, 1998
		Alexandru Ioan Cuza University of Iasi	March 9, 2020
	Federal Republic of Germany	University of Trier	May 3, 1999
	Hungary	University of Debrecen	December 22, 2000
	Italian Republic	University of Catania	March 27, 2018
		University of Turin	November 11, 2020
		Ca' Foscari University of Venice Department of Asian and North African Studies	March 29, 2023
		Sapienza University of Rome	February 29, 2024
		The University of Naples "L'Orientale"	March 1, 2024
	Bosnia and Herzegovina	University of East Sarajevo	February 15, 2023
	Kingdom of Spain	The University of Extremadura	February 20, 2023
Oceania	New Zealand	University of Otago	September 20, 2000
East Asia	People's Republic of China	Harbin Normal University	August 1, 1995
		Yanbian University	August 28, 2000
		Zhengzhou University	October 12, 2000
		Dalian University of Technology	December 28, 2009
		Xinjiang Institute of Engineering	September 23, 2016
		Qingdao Agricultural University	December 26, 2016
		Taiyuan University of Technology	April 19, 2017
		Shenyang University of Chemical Technology	November 20, 2017
		Central South University of Forestry and Technology	June 5, 2019
		Northeastern University	December 1, 2019
		Guangdong University of Technology	May 27, 2020
		Liaoning Petrochemical University	March 30, 2022
	Republic of Korea	Nam Seoul University	June 1, 2001
		Kyungpook National University	July 11, 2001
		Pusan National University	December 12, 2001
		Kyonggi University	September 25, 2002
	Taiwan	National University of Kaohsiung	November 17, 2016
		Kainan University	November 18, 2016
		Mackay Medical College	October 30, 2017
		National Pingtung University	April 10, 2018
		Chinese Culture University	February 19, 2019
		National Taipei University of Education	August 16, 2022
Southeast Asia	Kingdom of Thailand	Chiang Mai University	November 2, 2000
		Khon Kaen University	May 6, 2008
		Thammasat University	April 14, 2017
	Malaysia	Universiti Tunku Abdul Rahman	April 11, 2017
	Republic of Indonesia	Institut Teknologi Bandung	May 2, 2017
		National Nuclear Energy Agency	October 3, 2017
Africa	Socialist Republic of Viet Nam	An Giang University	July 2, 2018
		University of Science and Technology of Oran Mohamed Boudiaf	March 5, 2018

International Academic Exchange Agreements (Discipline-specific Agreements)

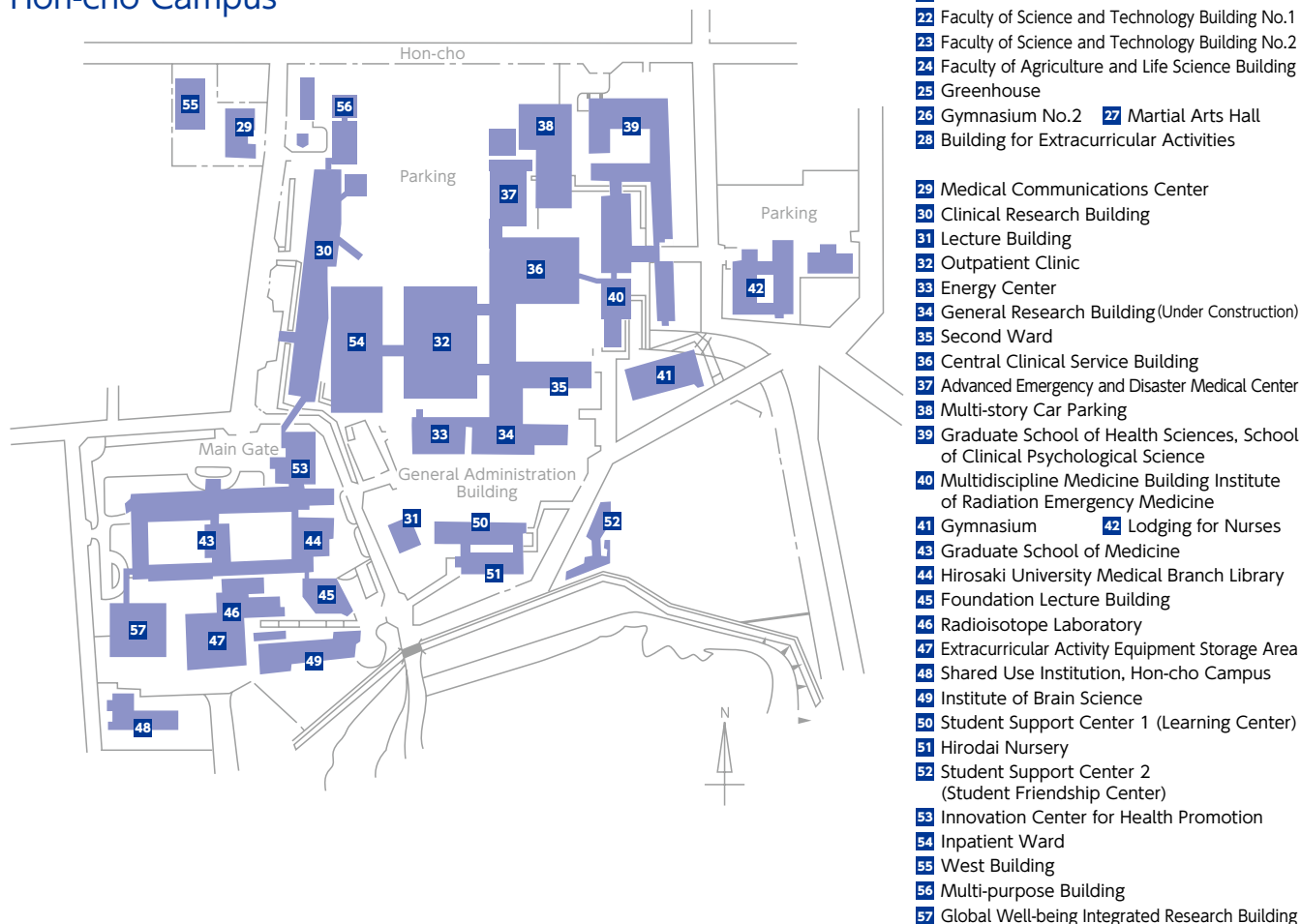
As of May 1, 2025

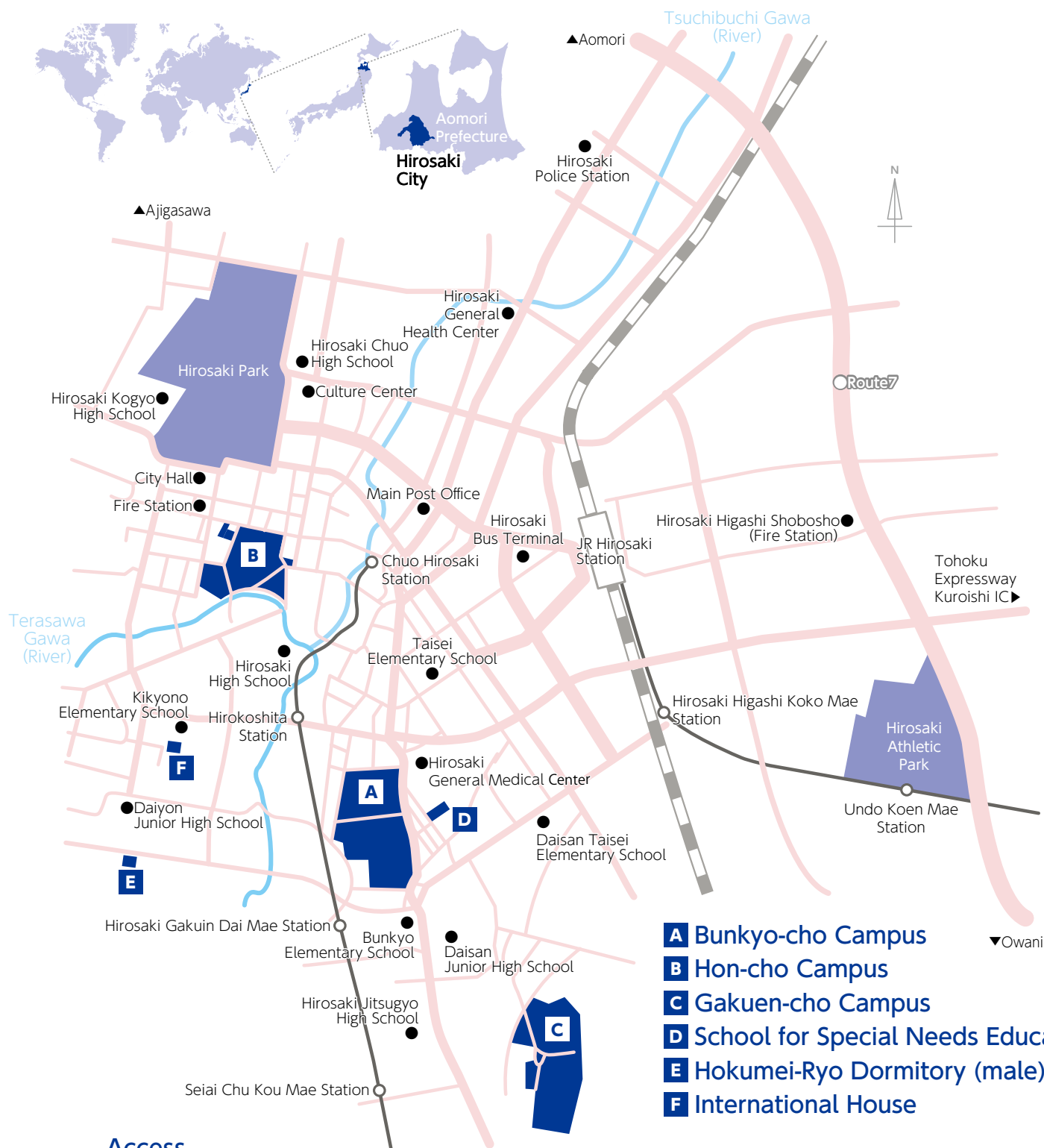
Note	Country		University	Date of Agreement
Faculty of Humanities and Social Sciences	Europe	Republic of Finland	Ruralia Institute, University of Helsinki	September 7, 2009
	East Asia	People's Republic of China	School of Foreign Languages, Beijing Institute of Technology	March 12, 2022
			School of Chinese Classics, Renmin University of China	October 12, 2024
Faculty of Education	North America / South America	U.S.A.	University of South Carolina	July 20, 1994
School of Medicine	North America / South America	U.S.A.	University of Tennessee Center for the Health Sciences	May 19, 1982
		Jamaica	The University of the West Indies	February 25, 2002
	Europe	Republic of Slovenia	Faculty of Medicine, University of Ljubljana	November 28, 2014
	East Asia	People's Republic of China	China Medical University	October 25, 2005
		Taiwan	College of Medicine, Chang Gung University	November 6, 2024
Graduate School of Health Sciences	North America / South America	U.S.A.	School of Nursing and Dental Hygiene, University of Hawai'i at Manoa	August 29, 2019
	Europe	Kingdom of Sweden	Centre for Radiation Protection Research, Stockholm University	March 6, 2013
	East Asia	Taiwan	College of Nursing, Taipei Medical University	September 26, 2019
Faculty of Science and Technology	East Asia	People's Republic of China	Science and Engineering Schools, Henan Polytechnic University	September 28, 2023
Faculty of Agriculture and Life Science	East Asia	People's Republic of China	College of Horticulture, ShenYang Agricultural University	November 3, 2015
		Republic of Korea	The College of Agriculture, Life & Environment Sciences, Chungbuk National University	December 6, 2018
		Taiwan	College of Agriculture and Natural Resources, National Chung Hsing University	November 15, 2017
	Southeast Asia	Kingdom of Thailand	School of Energy and Environment, University of Phayao	August 6, 2018
		Republic of the Philippines	Nueva Vizcaya State University	August 1, 2023
	South Asia	India	Faculty of Science, Alagappa University	August 7, 2018
			Faculty of Arts, Alagappa University	August 7, 2018
Graduate School of Regional Studies	East Asia	People's Republic of China	College of International Development and Global Agriculture, China Agricultural University	June 1, 2020
University Hospital	East Asia	Taiwan	Chang Gung Memorial Hospital	November 30, 2023
	Southeast Asia	Kingdom of Cambodia	Cambodia Society of Neurosurgery Kitahara Medical Strategies International Co., Ltd.	June 6, 2024
Institute of Radiation Emergency Medicine	Europe	Hungary	University of Pannonia, Faculty of Engineering, Institute of Radiochemistry and Radioecology	March 18, 2013
		French Republic	Faculty of Physics and Engineering, University of Strasbourg	October 30, 2019
	East Asia	People's Republic of China	National Institute for Radiological Protection, China CDC	May 2, 2016
			School of Radiation Medicine and Protection and Radiation Medicine and Interdisciplinary Sciences, Soochow University	May 21, 2018
			Institute of Radiation Medicine, Fudan University	March 12, 2019
			Institute of Nuclear Applied Technology, East China University of Technology	September 14, 2020
			College of Physics and Electronic Engineering, Hengyang Normal University	September 30, 2021
		Republic of Korea	Korea Institute of Radiological and Medical Sciences	January 21, 2013
			Dongnam Institute of Radiological & Medical Sciences	June 14, 2016
	Southeast Asia	Kingdom of Thailand	Faculty of Engineering, Chulalongkorn University	December 21, 2018
			Faculty of Science, Kasetsart University	December 6, 2022
			Thailand Institute of Nuclear Technology	December 8, 2023
		Socialist Republic of Vietnam	Office of Atoms for Peace	January 22, 2024
			Institute for Nuclear Science and Technology, Vietnam Atomic Energy Institute	November 22, 2013
		Republic of the Philippines	The Philippine Nuclear Research Institute	June 30, 2015
		Republic of Indonesia	Center for Technology of Radiation Safety and Metrology, National Nuclear Energy Agency of Indonesia	June 18, 2021
			Faculty of Medicine, Diponegoro University	March 6, 2023
	South Asia	India	Centre for Advanced Research in Environmental Radioactivity, Mangalore University	August 19, 2019
		People's Republic of Bangladesh	Atomic Energy Centre, Dhaka, Bangladesh Atomic Energy Commission	October 15, 2018
	Central Asia	Republic of Kazakhstan	Institute of Radiobiology and Radiation Protection, NJSC "Astana Medical University"	April 16, 2024
			JSC "National Scientific Medical Center"	April 18, 2024
			NCJSC "Astana Medical University" JSC "National Scientific Medical Center"	April 18, 2024
	Africa	Federal Republic of Nigeria	Department of Physics, Federal University of Agriculture Abeokuta	September 30, 2021
		Republic of Kenya	Kenyatta University	October 30, 2023
Institute of Regional Innovation	East Asia	People's Republic of China	School of Chemical Engineering, Sichuan University	June 8, 2016
			School of Chemistry and Environmental Engineering, Shanxi Datong University	May 22, 2019
	Europe	Kingdom of Denmark	Department of Wind and Energy Systems, Technical University of Denmark	March 30, 2023

Bunkyo-cho Campus



Hon-cho Campus





Access

Tokyo	Tohoku Shinkansen (3h10m)		Shin Aomori Station	JR Super Express (30m)	Hiroaki Station	*6 100yen bus (Dotemachi Line) (15m)	University Hospital Mae	Hon-cho Campus
	Airplane (1h20m)		Aomori Airport	Konan Bus (Local Bus) (55m)		*6 Komagoshi Line (15m)		
Sapporo	JR Super Express (3h30m)	Shin Hakodate Hokuto Station	Hokkaido Shinkansen (1h10m)	Shin Aomori Station	JR Super Express (30m)	*8 Kinzoku Danchi/Sakuragaoka Line (15m)	Hon-cho	Bunkyo-cho Campus
	Airplane (45m)			Aomori Airport	Konan Bus (Local Bus) (55m)	*3 Koguriyama/Oinomori Line (15m)	Hirosaki Daigaku/Mae or Hirodai Nogakuseimeikagakubu-Mae	
Morioka	Highway Bus (2h15m)					*3 Gakuen-cho Line (15m)		Gakuen-cho Campus
Sendai	Highway Bus (4h20m)					*3 Gakuen-cho Line (25m)	Gakuen-cho	

*Chuo Exit Bus stop



National University Corporation Hirosaki University

1 Bunkyo-cho, Hirosaki, Aomori, 036-8560, Japan

URL <https://www.hirosaki-u.ac.jp/en/>

Designed by SEITO Shinichiro (Completed Graduate School of Education), Under the Supervision
of ISHIKAWA Yoshiro (Former Professor, Faculty of Education, Hirosaki University)



Hirosaki University
website



HIROSAKI
UNIVERSITY