



2015 Overview  
**UNIVERSITY CORPORATION  
HIROSAKI UNIVERSITY**



弘前大学  
HIROSAKI UNIVERSITY





President SATO Kei

## Hirosaki University: Establishing a Global Identity, Forging Ahead with the Community

### Principle

In the spirit of the Fundamental Law of Education, the aim of Hirosaki University is to acquire a wide store of knowledge for in-depth teaching of and research in the professional arts and sciences; to develop the intellectual, moral, practical, and applicable capacities of staff and students alike; and to produce future leaders supplied with insights sufficiently broad and well informed that they can help shape the future of human culture.

### Goals

Hirosaki University is a medium-sized university with faculties of Humanities, Education, Medicine, Science & Technology, and Agriculture & Life Science. These five faculties cover a broad and comprehensive range of undergraduate academic disciplines. The university is also home to seven graduate programs, including the independent and interdisciplinary doctoral course in Regional Studies. Hirosaki University has taken full advantage of its location in Aomori Prefecture to advance its educational and research goals. First of all, within Aomori Prefecture there is great potential for energy production and development, including the nuclear energy and nuclear fusion-related facilities located within its borders. The Shirakami Wilderness World Heritage Site, located along the border of Aomori and Akita prefectures, offers many possibilities for the study of global warming and other environmental issues. Finally, in this era of reoccurring food crises and concern over food security, Aomori Prefecture serves as a national food production base. Hirosaki University has tailored its educational, research, and community outreach programs to focus on these areas of study, to develop the necessary human resources to meet the challenges they pose, and to project its research findings globally, regionally and locally.

### Educational Goals

Hirosaki University strives to provide a high level of education to future global and local leaders in a wide range of specialized fields. The university's general education program instills a strong sense of humanity and social responsibility, while the core curricula in the various specialized academic programs help students develop the know-how and the confidence to grapple with the rapid changes taking place in modern society. All of these academic programs are geared to conform to the university's commitment to the study of energy, the environment and food production. This commitment extends not only to the hard sciences, but to the human and social sciences as well.

### Research Goals

Hirosaki University promotes research that examines modern global issues linked to the local themes of energy, global warming and the environment, as well as food and food production. It promotes internationally recognized research, cutting edge basic research, as well as research that contributes to local growth and development.

### Community Service

Hirosaki University's community service program covers a wide range of activities that address many of the challenges that face the prefectures of northern Japan, including population decline in rural communities, low birthrates and an aging population. The University offers community medical care services, including care for those who have been exposed to radiation. Educational support programs to counteract diminished interest in the sciences amongst local elementary, middle, and high school students have been introduced as well. Projects to protect and build interest in local and regional culture and traditions have also been put into practice. Collabo HiroDai (Hirosaki University Collaboration Center) serves as the base for the cooperation between local industry, academia, and government that has made the implementation of these projects possible.

### Outside Linkages

Hirosaki University actively promotes collaboration with local government and industry. It also seeks to create linkages with other universities and institutions of higher learning in the region through the Committee for the Promotion of Ties between the Three National Universities in Northern Tohoku and the cooperative industry-university-government linkage program. It also promotes academic and personnel exchanges with affiliated institutions of higher learning abroad.

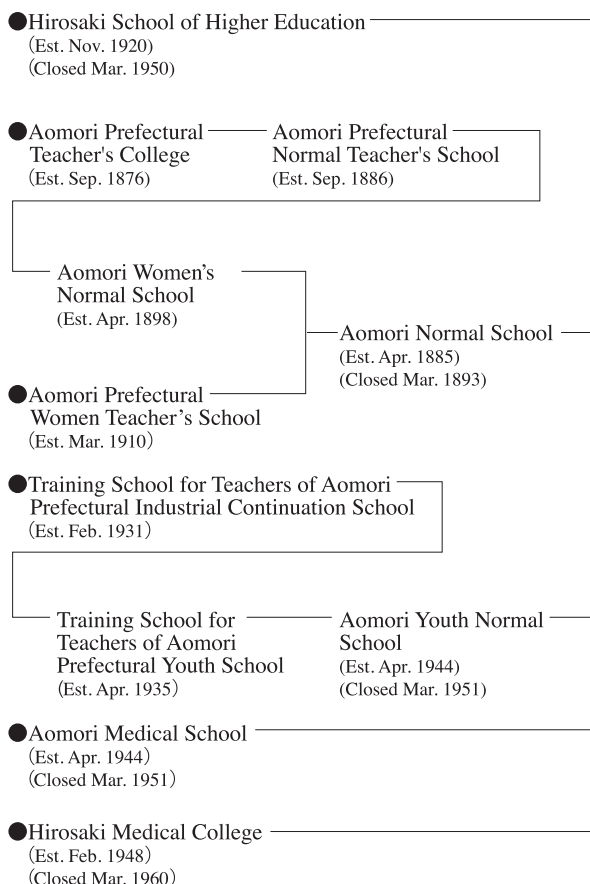
### University Administration

In order to successfully achieve the educational, research and community service goals it has set, Hirosaki University is working to strengthen its management system by soliciting the opinions of administrative staff and students and by giving full play to the leadership of the president. It also encourages its faculties and students to improve the quality of their work and to raise their levels of motivation. The University continues to promote the reforms necessary to reach these goals through a constant process of verification and assessment.



PRINCIPLE AND OBJECTIVES	1
CONTENTS	2
HISTORY	3
ACADEMIC ORGANIZATION	5
ORGANIZATION	6
PRESIDENTS PAST AND PRESENT	7
ADMINISTRATIVE STAFF	8
FACULTIES	11
GRADUATE SCHOOLS	13
RESEARCH INSTITUTE	16
UNIVERSITY HOSPITAL	17
UNIVERSITY LIBRARY	19
INTERDISCIPLINARY RESEARCH FACILITIES	20
CENTERS FOR THE RESEARCH OF SPECIAL PROJECTS IN EDUCATION	23
INSTITUTE RESEARCH	25
NUMBER OF UNIVERSITY STAFF	26
APPLICATION AND MATRICULATION / REGIONAL DISTRIBUTION OF ENTRANTS	27
NUMBER OF STUDENTS	28
GRADUATES	30
EMPLOYMENT INFORMATION FOR 2014 GRADUATES	31
DEGREES CONFERRED / PUBLICATIONS	32
SCHOLARSHIPS	33
INTERNATIONAL ACADEMIC EXCHANGE AGREEMENTS	34
INTERNATIONAL STUDENTS	35
OVERSEAS CENTER	36
REVENUE AND EXPENDITURES FOR 2015	37
GRANTS-IN-AID FOR SCIENTIFIC RESEARCH	37
STATUS OF ACCEPTED EXTERNAL FUNDING	38
ADDRESSES	39
LANDAREA AND FLOORSPACE	40
CAMPUS MAP	41
WELFARE FACILITIES	45
SATELLITE / REGIONAL AFFILIATIONS	46
LOCATION WITHIN HIROSAKI CITY	47
LOCATION WITHIN AOMORI PREFECTURE	48





Old-education-system Hirosaki School of Higher Education



Aomori Normal School

## HISTORY

Hirosaki University was established in the former castle town of Hirosaki in 1949. It is a national university and is located in Aomori Prefecture, situated at the northern end of Honshu Island.

The historical sketch of the University is as follows:

May. 1949	Hirosaki Medical College, Aomori Medical School, Hirosaki School of Higher Education, Aomori Normal School and Aomori Youth Normal School were incorporated in accordance with the National School Establishment Law into a “new-system” university with three faculties (Arts and Science, Education, Medicine) and a university library.
Apr. 1955	Faculty of Agriculture established.
Apr. 1958	Graduate School of Medicine (M.D.) established.
Apr. 1960	One-Year Postgraduate Course in Agriculture established. (Closed Mar. 1971)
Apr. 1965	Faculty of Arts and Science reorganized into Faculty of Humanities and Faculty of Science. College of Liberal Arts established. (Closed Sep. 1997)
Apr. 1966	One-Year Postgraduate Course in Education was established. (Closed Mar. 1994) Training Institute for Nurse Teachers established. (Closed Mar. 1980)
June. 1967	Health Administration Center established.
Apr. 1969	One-Year Postgraduate Course in Science established. (Closed Mar. 1978)
Apr. 1971	Graduate School of Agriculture (M.Agr.) established.
Apr. 1972	One-Year Postgraduate Course in Humanities established. (Closed Mar. 1999)
Apr. 1975	School of Allied Medical Sciences established.
Apr. 1977	Graduate School of Science (M.Sc.) established.
Apr. 1989	Graduate School of Humanities (M.A.) established.
Apr. 1990	The United Graduate School of Agricultural Sciences, Iwate University (D.Agr.) established.
Apr. 1993	Gene Research Center established.
Apr. 1994	Graduate School of Education (M.Ed.) established.
June. 1994	Computing and Networking Center established.
May. 1996	Center for Education and Research of Lifelong Learning established.
Apr. 1997	Center for Joint Research established.
Oct. 1997	New Science & Technology and Agriculture & Life Sciences facilities due to reorganization of the faculties
Apr. 1999	Graduate School of Humanities and Social Sciences (M.A.Humanities and Social Sciences) established.

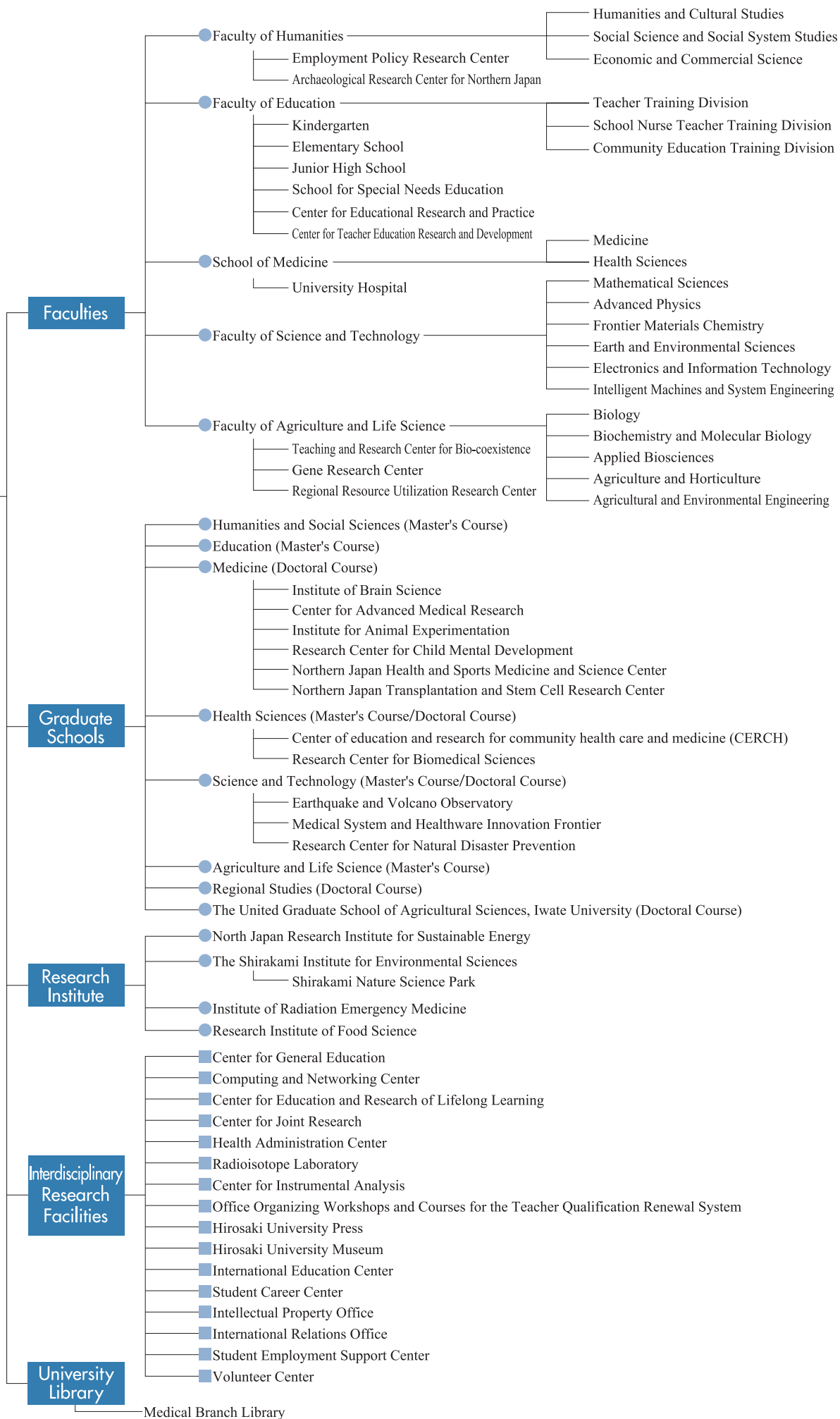


Oct. 1999	Radioisotope Laboratory established.
Apr. 2000	Teaching and Research Center for Bio-coexistence, Faculty of Agriculture and Life Science established.
Oct. 2000	School of Medicine Health Sciences established.
Apr. 2001	Center for Educational Research and Practice established.
Oct. 2001	Center for General Education established.
Apr. 2002	Graduate School of Science and Graduate School of Agriculture reorganized into "Graduate School of Science and Technology" and "Graduate School of Agriculture and Life Science." Graduate School of Regional Studies (Ph.D) established.
Apr. 2003	International Student Exchange Center established.
Sep. 2003	Center for Instrumental Analysis established.
Apr. 2004	National University Corporation HIROSAKI UNIVERSITY was established. Graduate School of Science and Technology (D. Sci) established.
Jun. 2004	Hirosaki University Press established.
Apr. 2005	Graduate Schools of Health Sciences (M. Hlth.Sci.) established.  Hirosaki University Graduate School of Medicine Center for Advanced Medical Research established.
Apr. 2007	Graduate School of Health Sciences (D. Hlth) established. International Student Exchange Center reorganized into "International Exchange Center."
Oct. 2008	Office Organizing Workshop and Courses for the Teacher Qualificatiion Renewal System established.
Mar. 2009	North Japan New Energy Research Center established.
Apr. 2009	Shirakami Nature Science Park established.
Oct. 2009	Office for the Promotion of Gender Equality established.
Mar. 2010	Research and Education Center for Radiation Emergency Medicine established.
Oct. 2010	North Japan Research Institute for Sustainable Energy and The Shirakami Institute for Environmental Sciences and Institute of Radiation Emergency Medicine established.
Oct. 2012	Museum established.
Mar. 2013	Research Institute of Food Science established.
Apr. 2013	International Education Center established.
Apr. 2014	Research Center for child Mental Development, Graduate School of Medicine, Hirosaki University established.  Medical Systems creative frontier, Graduate School of Science and Technology established.





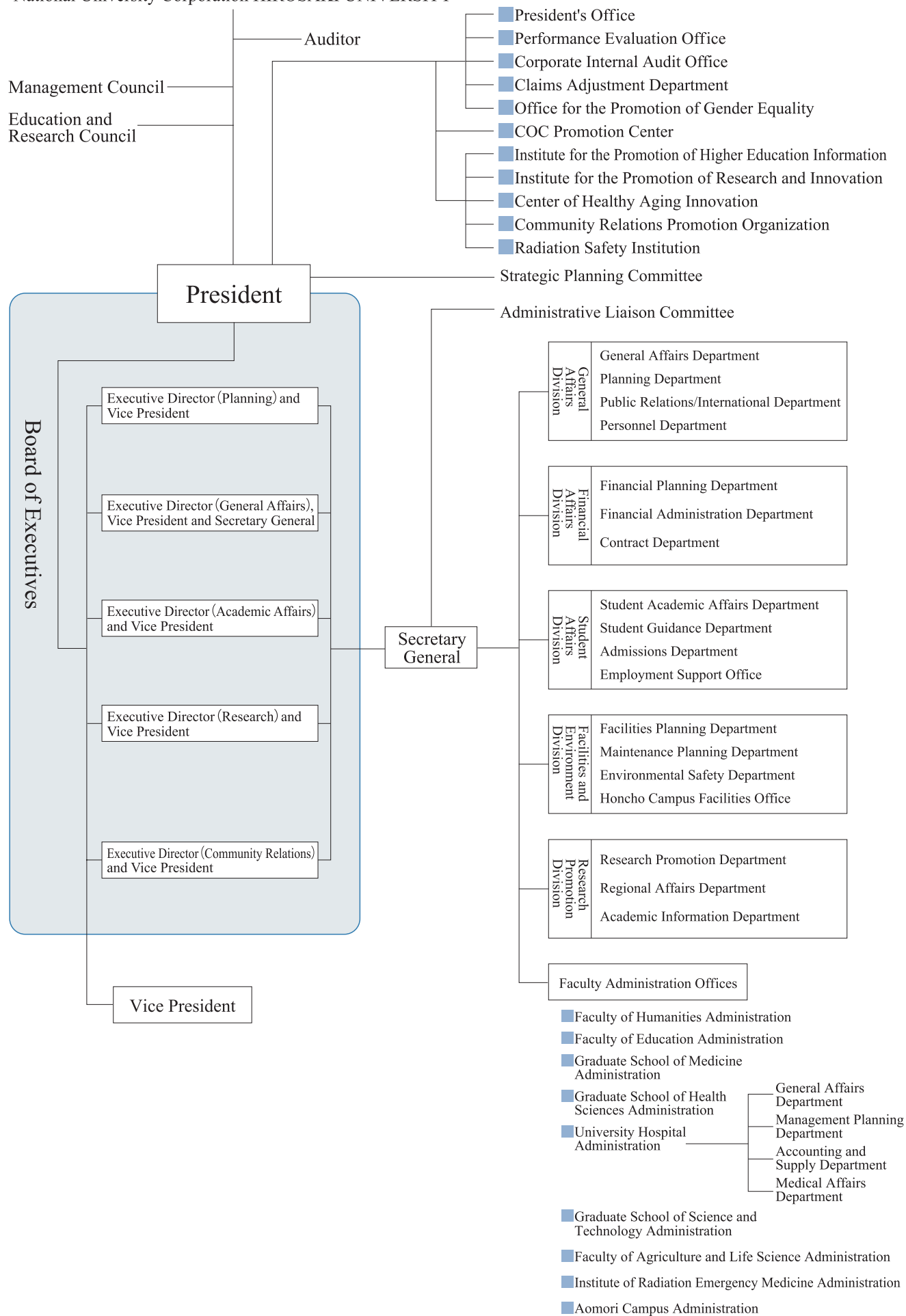
## Hirosaki University



The sigh(®)is a specific project education research center.



National University Corporation HIROSAKI UNIVERSITY





D.Med./D.Sci.	MARUI Kiyoyasu	May. 31,1949–Aug.19,1953
Acting	TOMINO Sohshiro	Aug. 19,1953–Jan.31,1954
D.Sci.	KOHRIBA Kan	Feb.1,1954–Dec.15,1957
Acting	TOMINO Sohshiro	Dec.15,1957–Jan.31,1958
D.Sci.	NOMURA Shichiroku	Feb.1,1958–Jan.31,1962
D.Med.	SATO Hiroshi	Feb.1,1962–Jan.31,1968
D.Econ.	YANAGAWA Noboru	Feb.1,1968–Jan.31,1972
D.Med.	USUBUCHI Isamu	Feb.1,1972–Jan.31,1978
D.Med.	OIKE Yasaburo	Feb.1,1978–Jan.31,1982
D.Ed.	MAKINO Kichigoro	Feb.1,1982–Jan.31,1986
D.Med.	TOHNO Shuji	Feb.1,1986–Jan.31,1992
D.Sci.	TESHIROGI Wataru	Feb.1,1992–Jan.31,1996
D.Med.	YOSHIDA Yutaka	Feb.1,1996–Jan.31,2002
D.Med.	ENDO Masahiko	Feb.1,2002–Jan.31,2012
D.Med.	SATO Kei	Feb.1,2012–



As of 1st May 2015

## Board of Executives

■ President	SATO Kei
■ Executive Director (Planning) and Vice President	YOSHIZAWA Atsushi
■ Executive Director (General Affairs), Vice President and Secretary General	KATO Ken
■ Executive Director (Academic Affairs) and Vice President	ITOH Shigeharu
■ Executive Director (Research) and Vice President	KASHIWAKURA Ikuo
■ Executive Director (Community Relations) and Vice President	OHKAWARA Takashi
■ Auditor	KITAGAWA Junichi
■ Auditor	ODAGIRI Satoru
■ Vice President	WAKE Taiji
■ Vice President	SAKKA Fumio
■ Assistant to the President	IGUCHI Yasutaka
■ Assistant to the President	TOH Satoshi
■ Assistant to the President	KAMIMOTO Masayuki
■ Assistant to the President	HORIUCHI Motohiro
■ Vice Executive Director	HADA Ryukichi
■ Vice Executive Director	SOGA Tohru
■ Vice Executive Director	OYAMA Hiroshi

## Presidential Selection Screening Committee

■ Member of the Management Council	OKAI Makoto
■ Member of the Management Council	KUSHIBIKI Toshisada
■ Member of the Management Council	KUMACHI Takashi
■ Member of the Management Council	NAGASAWA Hiroo
■ Member of the Management Council	MAITA Yoji
■ Member of the Education and Research Council	IMAI Masahiro
■ Member of the Education and Research Council	SASAKI Choichi
■ Member of the Education and Research Council	NAKAJI Shigeyuki
■ Member of the Education and Research Council	MIYANAGA Takafumi
■ Member of the Education and Research Council	KITAHARA Keiji
■ Executive Director (Planning) and Vice President	YOSHIZAWA Atsushi
■ Executive Director (General Affairs), Vice President and Secretary General	KATO Ken

## Management Council

■ President, Hirosaki University	SATO Kei
■ Executive Director (Planning) and Vice President	YOSHIZAWA Atsushi
■ Executive Director (General Affairs), Vice President and Secretary General	KATO Ken
■ Executive Director (Academic Affairs) and Vice President	ITOH Shigeharu
■ Executive Director (Research) and Vice President	KASHIWAKURA Ikuo
■ Executive Director (Community Relations) and Vice President	OHKAWARA Takashi
■ Director, University Hospital	TOH Satoshi
■ Professor, Faculty of Agriculture and Life Science	SUZUKI Hiroyuki
■ Vice governor, Aomori Prefecture	AOYAMA Yuji
■ Director, Okai Certified Public Accountants	OKAI Makoto
■ President, National Archives of Japan	KATO Takeo
■ President, Kanesho Co., Ltd.	KUSHIBIKI Toshisada
■ Director and Managing Executive Office General Manager, Senior Managing Executive Officer, Michinoku Bank Co., Ltd.	KUMACHI Takashi
■ Representative of Specified Nonprofit Corporation, PURATTO SHIMOKITA	SHIMA Yasuko

■ Chairman, Hirosaki Chamber of Commerce and Industry	NAGASAWA Hiroo
■ To-o Nippo Hirosaki Branch Office President	MAITA Yoji
■ Director General Manager, First International Corporation	YOSHIDA Etsuko

## Education and Research Council

■ President	SATO Kei
■ Executive Director (Planning) and Vice President	YOSHIZAWA Atsushi
■ Executive Director (General Affairs), Vice President and Secretary General	KATO Ken
■ Executive Director (Academic Affairs) and Vice President	ITOH Shigeharu
■ Executive Director (Research) and Vice President	KASHIWAKURA Ikuo
■ Executive Director (Community Relations) and Vice President	OHKAWARA Takashi
■ Vice President	WAKE Taiji
■ Vice President	SAKKA Fumio
■ Dean, Faculty of Humanities	IMAI Masahiro
■ Dean, Faculty of Education	TOTSUKA Manabu
■ Dean, Faculty of Agriculture and Life Science	SASAKI Choichi
■ Dean, Graduate School of Medicine	NAKAJI Shigeyuki
■ Dean, Graduate School of Health Sciences	KIDA Kazuyuki
■ Dean, Graduate School of Science and Technology	MIYANAGA Takafumi
■ Director, University Hospital	TOH Satoshi
■ Dean, Graduate School of Regional Studies	KITAHARA Keiji
■ Director, North Japan Research Institute for Sustainable Energy	MURAOKA Hirofumi
■ Director, The Shirakami Institute for Environmental Sciences	HIGAKI Daisuke
■ Director, Institute of Radiation Emergency Medicine	YAMADA Masatoshi
■ Director, Research Institute of Food Science	SAGA Naotsune
■ Director, Center for General Education	KIMURA Norimi
■ Director, University Library	KOHRI Chizuko
■ Vice-Director, University Hospital	FUKUDA Shinsaku
■ Director, Health Administration Center	TAKANASHI Shingo
■ Director, Center for Joint Research	ITO Shunji
■ Chief Editor, Hirosaki University Press	ADACHI Kaoru
■ Director, Office for the Promotion of Gender Equality	HIKAGE Yayoi
■ University Museum	SUDO Hirotooshi
■ Professor, Faculty of Humanities	YASUDA Muneyoshi
■ Professor, Faculty of Education	OHTSUBO Syoichi
■ Professor, Faculty of Agriculture and Life Science	ZHANG Shu-Huai
■ Professor, Graduate School of Medicine	NAKANE Akio
■ Professor, Graduate School of Health Sciences	NISHIZAWA Yoshiko
■ Professor, Graduate School of Science and Technology	NUKATSUKA Isoshi

## Performance Evaluation Office

■ Executive Director (Planning) and Vice President	YOSHIZAWA Atsushi
■ Professor, Faculty of Humanities	YAMAMOTO Hideki
■ Professor, Faculty of Humanities	SATO Kazuyuki
■ Professor, Faculty of Education	WADA Mikio
■ Professor, Faculty of Education	AZUMA Toru
■ Professor, Institute of Brain Science, Graduate School of Medicine	UENO Shinya
■ Professor, Graduate School of Medicine	SAWAMURA Daisuke

■ Associate Professor, Graduate School of Health Sciences	KITAMIYA Chiaki
■ Associate Professor, Graduate School of Health Sciences	TAKEO Teruko
■ Professor, Graduate School of Science and Technology	KATO Hiroo
■ Professor, Graduate School of Science and Technology	ARIGA Yoshiaki
■ Professor, Faculty of Agriculture and Life Science	YOSHIDA Takashi
■ Associate Professor, Faculty of Agriculture and Life Science	ISHIDA Kiyoshi
■ Chief, Planning Department	TAMADA Kunihiko
■ Chief, General Affairs Department	ISHIKAWA Mari
■ Chief, Research Promotion Department	FURUDATE Toshiki
■ Associate professor, Graduate School of Science and Technology	KITA Shoichi
■ Chief, Personnel Department	FUJIMOTO Hidekazu
■ Assistant Chief, Planning Department	AKIMOTO Yumiko

### Corporate Internal Audit Office

■ Executive Director and Vice President	YOSHIZAWA Atsushi
■ Chief, Graduate School of Science and Technology	SAITOH Nobuo
■ Deputy Department Chief, Management Planning Department, University Hospital	SASAKI Kenichi
■ Assistant Director, Corporate Internal Audit Office	MIKAMI Shinetsu
■ Section Chief, Corporate Internal Audit Office	NISHIYA Hironori

### Claims Adjustment Department

■ Professor, Faculty of Agriculture and Life Science	SUZUKI Hiroyuki
■ Dean, Graduate School of Regional Studies	KITAHARA Keiji
■ Director, Institute of Brain Science, Graduate School of Medicine	WAKABAYASHI Koichi
■ Chief, Faculty of Education	ISHIDOYA Masami
■ Assistant Chief, Personnel Department, General Affairs Division	IIDA Yuchiko

### Office for the Promotion of Gender Equality

■ Professor, Faculty of Education	HIKAGE Yayoi
■ Associate Professor, Student Career Center	KOISO Shigetaka
■ Professor, Faculty of Humanities	KURIHARA Yukiko
■ Associate Professor, Faculty of Education	IDE Kanako
■ Associate Professor, Institute of Brain Science, Graduate School of Medicine	TANJI Kunikazu
■ Associate Professor, Graduate School of Health Sciences	FUJITA Akemi
■ Associate Professor, Graduate School of Science and Technology	TORIKAI Hiroyuki
■ Professor, Faculty of Agriculture and Life Science	ZHANG Shu-huai
■ University Hospital Nursing Department, Head Nurse	NAGAO Makiko
■ Assistant Chief, General Affairs Department, General Affairs Division	KUDO Kouki
■ Assistant Chief, Personnel Department, General Affairs Division	IIDA Yuchiko
■ Assistant Chief, Financial Planning Department, Finance Division	YAMAGATA Hiroki
■ Lecturer, Faculty of Humanities	DOI Masayuki
■ Lecturer, Faculty of Education	MATSUMOTO Dai
■ Associate Professor, Faculty of Education	LEE Sujin
■ Professor, Graduate School of Science and Technology	FUJIKAWA Yasunori
■ Associate Professor, Faculty of Agriculture and Life Science	SAKAMOTO Kimitoshi
■ Vice Director, University Hospital School of Allied Medical Sciences	KOJIMA Keiya

### President Office

■ Planning Officer	SAITO Akihisa
--------------------	---------------

### Administration Bureau

■ Director, General Affairs Division	ISHIYAMA Toshimitsu
■ Chief, General Affairs Department	HORIUCHI Akihiko
■ Chief, Planning Department	TAMADA Kunihiko
■ Chief, Public Relations/International Department	ASARI Seiichi
■ Chief, Personnel Department	FUJIMOTO Hidekazu
■ Director, Financial Affairs Division	TSUKUI Sakashi
■ Chief, Financial Planning Department	MURAICHI Satoru
■ Chief, Financial Administration Department	SHOJI Satoshi
■ Chief, Contract Department	NAKANO Kimio
■ Director, Student Affairs Division	ITO Yasushi
■ Chief, Student Academic Affairs Department	ISHIKAWA Mari
■ Chief, Student Guidance Department	KUDO Hirofumi
■ Chief, Admissions Department	DOMON Teizo
■ Chief, Employment Support Office	HASEGAWA Tadao
■ Director, Facilities and Environment Division	TAKAHASHI Katsuji
■ Chief, Facilities Planning Department	MORIYA Akinori
■ Chief, Maintenance Planning Department	TAMAKI Takanori
■ Chief, Environmental Safety Department	SATO Kouki
■ Director Chief, Research Promotion Department	YAMAZAKI Junichiro
■ Chief, Research Promotion Department	FURUDATE Toshiki
■ Chief, Regional Affairs Department	ODAGIRI Tsutomu
■ Chief, Academic Information Department	MIKAMI Yutaka

### Faculty of Humanities

■ Dean	IMAI Masahiro
■ Chief, Faculty Administration	MATSUOKA Masae

### Faculty of Education

■ Dean	TOTSUKA Manabu
■ Director, Center for Educational Research and Practice	OHTAKA Akifumi
■ Director, Teacher Education Research and Development	NAKANO Hiroshi
■ Principal, Kindergarten	KODAMA Masashi
■ Principal, Elementary School	TANAKA Hiroshi
■ Principal, Junior High School	SHIMIZU Norihito
■ Principal, School for Special Needs Education	IWAI Yasunori
■ Chief, Faculty Administration	ISHIDOYA Masami



## Graduate School of Medicine

■ Dean	NAKAJI Shigeyuki
■ Director, Institute of Brain Science	WAKABAYASHI Koichi
■ Director, Center for Advanced Medical Research	ITO Ken
■ Director, Institute for Experimental Animals	UENO Shinya
■ Director, Research Center for Child Mental Development	NAKAMURA Kazuhiko
■ Chief, Graduate School Administration	KAMEYA Sadakiyo

## Graduate School of Health Sciences

■ Dean	KIDA Kazuyuki
■ Chief, Graduate School Administration	NAKAMURA Katsuyuki

## University Hospital

■ Director, University Hospital	TOH Satoshi
■ Director, Administration Division	TERASAKA Kazunori
■ University Hospital	MIURA Nobuyoshi
■ Chief, Management Planning Department	OUTA Shuzu
■ Chief, Accounting and Supply Department	WATANABE Wataru
■ Chief, Medical Affairs Department	SATO Satoru

## Graduate School of Science and Technology

■ Dean	MIYANAGA Takafumi
■ Director, Earthquake and Volcano Observatory	ARIGA Yoshiaki
■ Director, Medical System and Healthcare Innovation Frontier	ONO Toshiro
■ Chief, Graduate School Administration	SAITOH Nobuo

## Faculty of Agriculture and Life Science

■ Dean	SASAKI Choichi
■ Director, Teaching and Research Center for Bio-coexistence	MATSUZAKI Masatoshi
■ Faculty of Agriculture & Life Sciences	HIMENO Hyota
■ Chief, Faculty Administration	NAGASAWA Jun

## Graduate School of Regional Studies

■ Dean	KITAHARA Keiji
--------	----------------

## Research Institute

■ Director, North Japan Research Institute for Sustainable Energy	MURAOKA Hirofumi
■ Director, The Shirakami Institute for Environmental Sciences	HIGAKI Daisuke
■ Director, Institute of Radiation Emergency Medicine	YAMADA Masatoshi
■ Director, Research Institute of Food Science	SAGA Naotsune

## Interdisciplinary Research Facilities

■ Director, Center for General Education	KIMURA Norimi
■ Director, Computing and Networking Center	KASAI Masumi

■ Director, Center for Education and Research of Lifelong Learning	SOGA Tohru
■ Director, Center for Joint Research	ITO Shunji
■ Director, Health Administration Center	TAKANASHI Shingo
■ Director, Radioisotope Laboratory	TSUCHIDA Shigeki
■ Director, Center for Instrumental Analysis	HASHIMOTO Masaru
■ Director, Office Organizing Workshops and Courses for the Teacher Qualification Renewal System	CHONAN Yukiyasu
■ Chief Editor, Hirosaki University Press	ADACHI Kaoru
■ Director, Hirosaki University Museum	SUDO Hirotoishi
■ Director, International Education Center	ITOH Shigeharu
■ Director, Student Career Center	ISHIKAWA Yoshiro
■ Director, COC Promotion Center	SATO Kei
■ Director, Office for the Intellectual Property	KASHIWAKURA Ikuo
■ Director, Volunteer Center	OHKAWARA Takashi
■ Director, International Coalition Office	WAKE Taiji

## University Library/Medical Branch Library

■ Director	KOHRI Chizuko
■ Director, Medical Branch Library	KURATA Kiyoshi

## Aomori Campus

■ Chief, Graduate School Administration	YAMADA Shuhei
---	---------------



## Faculty of Humanities

### Aiming towards the acquisition of specialized knowledge, skills, and problem solving ability that can respond to the changing times

The Faculty of Humanities is set to be reorganized into the Faculty of Humanities & Social Sciences in April, 2016. The purpose for this is to further strengthen and fulfill the current Faculty of Humanities' role as one of northern Tohoku's chief strongholds in the field of humanities and social science. With the rapid aging of society and the advancement of globalization on a world-scale, and within the tremendous changes taking place in Japanese society, our Faculty aims to cultivate individuals supported by clear values and principles, who are equipped with an ability to solve today's problems and who possess specialized knowledge and skills in the field of humanities and social science.

Courses	Chairs		
Courses in new faculty (Faculty of Humanities & Social Sciences)	Courses established in the new faculty		
Culture Creation Course	Cultural Resource Studies Course	Multicultural Coexistence Course	
Society Management Course	Economics & Law Course	Business Strategy Course	Regional Activities Course



## Faculty of Education

### A new teacher training program for a new age

The Faculty of Education has three divisions—the Teacher Training Division, the School Nurse Teacher Training Division, and the Community Education Training Division. In order to give the students the best possible training as teachers and specialists, educational research is carried out in the humanities, social sciences, natural sciences, art, physical education, and pedagogy. The Center for Educational Research and Practice, the Center for Teacher Education Research and Development, as well as the Kindergarten, Elementary School, Junior High School, and School for Special Needs Education were attached so as to allow faculty members to test their findings and give the students an opportunity to experience teaching. vv

Courses	Chairs			
Teacher Training Division	Japanese Education	Social Studies Education	Mathematics Education	Natural Science Education
School Nurse Teacher Training Division	Music Education	Arts Education	Health and Physical Education	Technical Education
Community Education Training Division	Home Economics Education	English Education	School Health Science	School Education



## School of Medicine

### Hirosaki University School of Medicine sets up its “objective and purpose” as follows:

- 1 To pursue the dignity of human beings and contribute to the advancement of medicine.
- 2 To educate physicians and medical scientists who are endowed with a high standard of medical knowledge and fulfill their duty in society with a broad outlook and supple thinking.
- 3 To promote studies of international standard in all aspects of basic and applied medical science.
- 4 To provide highly advanced medicine in cooperation with the local community.

Department	Chairs
Medicine	Note: Courses in the Graduate School of Medicine





## School of Health Sciences

### Fostering health professions with advanced healthcare technology and well-rounded humanity

The School of Health Sciences comprises five departments and provides medical specialists in a variety of fields. Through its predecessor (School of Allied Medical Sciences), it has had a long and distinguished history in the education of health professionals. The School is located at the Honcho Campus and approximately 800 students are enrolled in the school. The mission of the School of Health Sciences is to provide high quality and relevant education for health professions conducting research to improve the quality of life and well-being of individuals through development of highly efficient healthcare.

Department	Courses		
Health Sciences	Nursing	Radiological Technology	Medical Technology
	Physical Therapy	Occupational Therapy	



## Faculty of Science and Technology

### Science and Technology create an affluent future of the world.

Through attentive education, the Faculty of Science and Technology aims to foster creative engineers with rich personalities who will construct the highly information-oriented and high technology society of the 21st century. The educational curriculum is devised to simultaneously provide insight into our highly varied society and basic competence immutable in the field of science and technology. The Faculty also promotes research activities to maintain close cooperation with the local community.

Departments	Keywords			
Mathematical Sciences	Algebra	Geometry	Analysis	Applied Mathematics
Advanced Physics	Condensed Matter Physics	Surface and Interface Physics	Nano-Science	Cosmology/Cosmic Ray Physics
Frontier Materials Chemistry	Physical Chemistry	Organic Chemistry	Inorganic/Analytical Chemistry	Functional Materials Chemistry
	Bio-Related Chemistry			
Earth and Environmental Sciences	Astrophysics	Environmental Science of the Atmosphere and Hydrosphere	Solid Earth Science	Natural Disaster Prevention Technology
Electronics and Information Technology	Applied Electronics Materials	Electronic Information Devices	Applied Computer Science	Multimedia
Intelligent Machines and System Engineering	Sustainable Environment Conscious System (Environment Sensing Systems, Environment Conscious Engine Systems, Fire Safety Systems)			
	Medical Science and Engineering Technology (Science of Micro-Materials and Functions, Medical Micro-Device Systems, Robot and Intelligent Systems)			
	Note: The above are keywords for research fields in the Faculty of Science, as this Faculty does not have prescribed courses of study.			



## Faculty of Agriculture and Life Science

### Focusing on both experiments and practical training in the fields of biology, agriculture, economics and system engineering

The Faculty of Agriculture and Life Science consists of the following five departments. The Department of Biology is designed to enable students to understand the mechanism of life and to study the management and preservation of the natural environment. The Department of Biochemistry & Molecular Biology researches and applies the principals of life to develop new biotechnology. The Department of Applied Biosciences provides students with the basic background necessary to ensure food and agricultural systems in relation to human health. The Department of Agriculture and Horticulture aims to create production methods of garden products and basic food which harmonize with the natural environment, and promote the well-being of the social economy system. The Department of Agricultural & Environmental Engineering creates a rich and comfortable environment for agricultural production and rural life. Each department offers two educational courses. The Faculty of Agriculture and Life Science has two teaching and research farms, in which students can gain practical experience in fruit, vegetable, crop and animal production to acquire the foundations in the field of agriculture and life science.

Departments	Educational Courses	
Biology	Basic Biology	Ecology and Environmental Biology
Biochemistry and Molecular Biology	Life Science and Biochemistry	Applied Life Science
Applied Biosciences	Biotechnology	Plant Protection and Nutrition
Agriculture and Horticulture	Agriculture and Horticulture	Food and Agricultural Economics
Agricultural and Environmental Engineering	Irrigation, Drainage and Reclamation Engineering	Regional Environment

## Humanities and Social Sciences (Master's Course)

The Graduate School of Humanities and Social Sciences is committed to the community and the globalized world.

Two courses of study are offered in the M.A. program: Cultural Studies and Applied Social Sciences. The goal of each is to turn out highly qualified graduates who can deal with the transformations and institutional reforms that are occurring at both the regional and the global levels of current society.

## Courses

Cultural Studies (Course for Aspiring Scholars in the Humanities and Social Sciences  
Course for the Training of Local and Regional Professionals  
Course for the Training of Professionals Who Can Play an Active Part in International Society)

Applied Social Sciences (Course for Aspiring Scholars in the Humanities and Social Sciences  
Course for the Training of Local and Regional Professionals  
Course for the Training of Professionals Who Can Play an Active Part in International Society)

## Education (Master's Course)

For deeper knowledge and more practical skills

The Graduate School of Education has three courses—the School Education Course, the Curriculum Studies Course, and the Coordinated School-Health Education Course. Two years are required to obtain a Master's Degree. Graduate education is based on the courses in pedagogy and curriculum studies taught at our undergraduate level. The aim of the Graduate School is to train specialists in practical education who can also stimulate regional culture and pass on its traditions. Through its program in educational sciences, curriculum pedagogy, and specialized subjects, the Graduate School provides an in-service training program that helps teachers keep abreast of societal changes and the accompanying changes in moral values.

## Courses

School Education    Curriculum Studies    Coordinated School Health (Yogo) Education

## Medicine (Doctoral Course)

Advanced education and research in medical science

The main objective of the graduate study program is to teach and research academic theories and their applications in the field of medicine. The program also aims to make contributions to the advancement of culture in general by fostering a deeper understanding of medicine. Through the course, students will expand the body of academic knowledge in their area of study to obtain highly developed research skills, which will prepare them to carry out independent research activities as medical researchers, and to perform other highly specialized professional duties after graduation.

Courses	Chairs			
Medical Science	Basic Medicine			
	Neuroanatomy, Cell Biology and Histology	Anatomical Science	Physiology	Biochemistry and Genome Biology
	Pharmacology	Pathology and Molecular Medicine	Pathology and Bioscience	Microbiology and Immunology
	Social Medicine	Forensic Medicine		
	Clinical Medicine			
	Gastroenterology and Hematology	Cardiology and Nephrology	Respiratory Medicine	Endocrinology and Metabolism
	Medical Oncology	Neuropsychiatry	Pediatrics	Thoracic and Cardiovascular Surgery
	Gastroenterological Surgery	Orthopaedic Surgery	Rehabilitation Medicine	Dermatology
	Urology	Ophthalmology	Otorhinolaryngology	Radiology and Radiation Oncology
	Obstetrics and Gynecology	Anesthesiology	Neurosurgery	Dentistry and Oral Surgery
	Plastic and Reconstructive Surgery	Emergency and Disaster Medicine	Laboratory Medicine	Anatomic Pathology
	Pediatric Surgery	Medical Informatics	General Medicine	Pharmaceutical Science

Affiliated Educational Research Facilities	Chairs			
Institute of Brain Science	Neuropathology	Vascular Biology	Neurophysiology	Neurology
Center for Advanced Medical Research	Stress Response Science	Glycotechnology		
Institute for Animal Experimentation				
Research Center for Child Mental Development				
Endowed Course	Advance Management of Cardiac Arrhythmias	Advanced Transplant and Regenerative Medicine	Community Medicine	Advanced Cardiovascular Therapeutics
	Community Health Promotion	Cancer Epidemiology and Community Health	Hypertension Stroke Medicine	Community Healthcare Development in Odate and North Akita
	Development of Community and General Medicine			



## Health Sciences

## Health Sciences

**Training of advanced health professionals with problem solving skills**

The Health Science course aims to accumulate and create knowledge through research in the field of health science, while also developing co-medical staff members who are highly competent and able to demonstrate leadership in clinical situations. In addition, we have established a radiation emergency medicine qualification course, which aims to produce researchers and educators who can contribute to the development of the field, while also cultivating elite professionals and leaders in areas related to radiation emergency medicine. Furthermore, we have established a high-level course in clinical radiation nursing, which will educate and cultivate personnel who can perform advanced clinical nursing for individuals, families, and groups who have complex medical problems related to radiation emergency medicine.

## Courses

Health Sciences

## Masters Course

**Developing educators and researchers with abundant originality and creativity**

This course builds further on the knowledge, the technology, and the ability of basic research obtained during the undergraduate education and research in the master's course. Through the course, students independently carry out original and academic research for the maintenance and the promotion of people's health, and for the improvement in the QOL (quality of life) of patients. The main objective of the graduate study program is to train educators and researchers who have acquired broad knowledge, advanced learning in their specialty, and who also maintain a high standard of ethics. In addition, we have established a radiation medicine course, which aims to produce researchers and educators who can contribute to the development of the field, while cultivating advanced educators and researchers in radiation emergency medicine.

## Courses

Health Sciences

## Science and Technology

## Master's Course

**With the Aim of Advanced Science and Technology Education**

The Graduate School of Science and Technology (Master's Course) considers education as the most important duty, and aims to nurture highly specialized engineers who can adapt themselves to the progress and diversity of science and technology. The course provides advanced science and technology education by considering the importance of the close connections between what is studied in the undergraduate and master's programs.

## Courses

Science and Technology

## Doctoral Course

**Creation of Advanced Science and Technology in the Future**

The Graduate School of Science and Technology (Doctoral Course) consists of two courses of Advanced Materials Science and Technology and Safety Science and Technology. The former covers the development of useful materials and their application technology and the latter does crisis-controlling technology for natural and human-originating disasters in the highly developed society. Each course aims to cultivate engineers who will be able to solve problems flexibly, with perspective and taking into consideration the whole situation.

## Courses

Advanced Materials Science and Technology    Safety Science and Technology

## Agriculture and Life Science (Master's Course)

**Advanced education and research in the field of Agriculture and Life Sciences**

The master's program consists of five courses: "Biology," "Biochemistry & Molecular Biology," "Applied Biosciences," "Agriculture & Horticulture," and "Agricultural & Environmental Engineering." Students may choose one of two academic programs depending on their future plans: the academic research program (training of researchers) or practical research program (training of technical experts). The Master's degree in Agriculture and Life Sciences is awarded to those who have earned enough credits and have submitted an approved dissertation. We aim to cultivate highly advanced specialists who possess a broad understanding of technique and can contribute to the development of the expert community, and superior engineers with international vision, who can meet the demands of the times and the challenges of cutting edge research.

## Courses

Agriculture and Life Sciences

## Regional Studies (Doctoral Course)

**Educating professionals with advanced skills**

The Graduate School of Regional Studies trains individuals who deal concretely with the peculiar subjects of regions. This educational institution, set up in 2002, produces practical findings and aims to actively contribute to the realization of a vibrant regional society.

The Graduate School of Regional Studies is an independent 3 year doctor's course composed of Regional Industrial Studies, Regional Cultural Studies and Regional Political Studies. It grants a Doctoral Diploma to supervised students after 3 years of study and publication of their research and thesis. Also many professionals involved in different aspects of the regional society are enrolled for this course.

Courses

Regional Studies

## The United Graduate School of Agricultural Sciences, Iwate University (Doctoral Course)

**Training of international researchers and specialists with the ability to resolve various problems**

The United Graduate School of Agricultural Science (UGAS) was established by the unity of scientists, institutions and equipment of the three Master's Courses (Agriculture, or Agriculture and Life Science) of Hirosaki, Iwate and Yamagata Universities and the Master's Course (Animal Husbandry) of Obihiro University of Agriculture and Veterinary Medicine. Each graduate school is characterized by unique activities of education and research. The objectives of UGAS are to promote advanced techniques and interdisciplinary research in the scientific fields of bio-production, bio-resources, biotic environment through the establishment of education and research systems and cryobiosystems sciences in the four graduate schools, which are located in northern Japan. UGAS intends to cultivate scientists and technical experts with advanced knowledge and great scholarship in their specialized fields and to contribute to the progress of academic studies, the development of agricultural and related industries, and the prosperity of local and global communities. As a member of the global community, UGAS actively accepts international students, whose numbers have been increasing in recent years.

Specialty  
Courses

Bioproduction Science

Bioresources Science

Cryobiosystems Science

Biotic Environment Science





### North Japan Research Institute for Sustainable Energy

Founded in Oct. 2010

The North Japan Research Institute for Sustainable Energy (NJRISE) is conducting research and education on unique renewable energy systems in cold regions with a view towards realization of a sustainable low-carbon society. Four main research fields are included: (1) Advanced energy materials: low-cost and large-scale production of solar-cell-grade silicon by direct reduction of silica, and development of thermoelectric conversion materials; (2) Fuel cell & biomass: developments of low-cost and high-performance materials for fuel cells, advanced biomass energy conversion technology, and best-mixed environmental energy systems; (3) Geothermal Energy: assessment of geothermal potentials, development of moderate- and low-temperature geothermal key-element technologies, and innovation of geothermal energy utilization systems; (4) Electric vehicles: developments of elemental technologies for cold regionally-specified EV and torque sensors for SBW system. In addition, NJRISE is developing advanced technologies related to wind and tidal power generations as well as energy conservation. NJRISE aims at the contribution to create local renewable energy industry through the dissemination of technological information and cultivation of human resources.



### The Shirakami Institute for Environmental Sciences

Founded in Oct. 2010

The Shirakami-Sanchi, registered as a World Natural Heritage site, consists of a pristine ecosystem with its rich flora and fauna found in primeval Japanese beech forests. Research into its ecosystem and genetic properties should be pursued further. With the Japanese beech forests in the area feared to be shrinking, it is becoming ever more important to gather fundamental data on the climate and collect specimens of the area's flora and fauna. The Shirakami-Sanchi also has a strong connection to local residents, and is an important place where we can teach elementary-school children about environmental issues, which will contribute to making them interested in science. Our research institute makes the Shirakami-Sanchi its subject of study, and is furthering research on taxonomy, ecology, and the effects of global warming, while also promoting environmental education by reexamining the relationship of people to the forests.



### Institute of Radiation Emergency Medicine

Founded in Oct. 2010

Nuclear facilities are operating in Aomori Prefecture and the preparedness for a radiation emergency is of cardinal importance for the foundation of the energy policy of our country. The Institute of Radiation Emergency Medicine promotes research on radiation emergencies and supports education in the faculties and graduate schools in Hirosaki University and produces various professionals required to work in nuclear and medical facilities in Aomori and all over Japan.



### Institute for Food Science Research

Founded in March, 2013

Because of Aomori's unique climate conditions and geographical characteristics, the prefecture is brimming with diversity in its agricultural, marine, and forestry resources. This research institute was established to promote the region by adding value and forming competitive brands through studies on the functionality of Aomori's agricultural, marine, and forestry products. Now, the institute has four research divisions, dedicated respectively to (1) adding value to the agricultural, marine, and forestry products, (2) utilizing and preserving marine resources, (3) cutting edge food production technology, and (4) food and health. In addition, the institute is making the region a center for food science and technology (based on the institute's advanced, cutting edge research), and it is promoting the region with the financial cooperation of industry, advancing research related to globalization and growth strategies for agricultural, marine, and forestry products.





## University Hospital

### Focusing on the provision, development and education of advanced medical care based on bioethics.

For over 70 years, Hirosaki University Hospital has been continuing to grow as one of the most distinguished centers for medical care, clinical research, and medical education in northern Tohoku, contributing to the region by training medical workers, developing cutting edge treatments, and offering advanced, high-quality medical care.

#### Clinics

Gastroenterology	Pediatrics	Obstetrics and Gynecology
Hematology	Thoracic Surgery	Anesthesiology
Rheumatology	Cardiovascular Surgery	Neurosurgery
Cardiology	Gastroenterological Surgery	Plastic and Reconstructive Surgery
Respiratory Medicine	Breast Surgery	Pediatric Surgery
Nephrology	Endocrine Surgery	Dentistry and Oral Surgery
Endocrinology	Orthopaedic Surgery	Anatomic Pathology
Diabetology	Dermatology	Emergency
Infection Diseases	Urology	Rehabilitation Medicine
Neurology	Ophthalmology	Division of General Medicine
Medical Oncology	Otorhinolaryngology	Emergency and Disaster Medical Center
Neuro-Psychiatry	Radiology	

## Emergency and Disaster Medical Center

The "Emergency and Disaster Medical Center" is an advanced emergency care center equipped and ready for radiation exposure and other hazards.



Aerial Photo ( ↓ Building ↓ Heliport)



Basement 1F : Room for Special Treatment  
(training in progress)

## Beds

As of May 1, 2015

Clinical Divisions	Distribution of Beds		
	Ordinary	Phychiatry	Infectious
Gastroenterology/Hematology/Rheumatology	37		
Cardiology/Respiratory Medicine/Nephrology	49 (59)		
Endocrinology/Diabetology/Infectious Diseases	36		
Neurology	9		
Medical Oncology	10		
Neuro-Psychiatry		41	
Pediatrics	37		
Thoracic/Cardiovascular Surgery	25		
Gastroenterological/Breast/Endocrine Surgery	45		
Orthopaedic Surgery	44		
Dermatology	12		
Urology	37		
Ophthalmology	32		
Otorhinolaryngology	36		
Radiology	19		
Obstetrics and Gynecology	38		
Anesthesiology	6		
Neurosurgery	21		
Plastic and Reconstructive Surgery	15		
Pediatric Surgery	6		
Dentistry and Oral Surgery	10		
Infectious Disease			6
Auxiliary Beds	6		
Radioisotope	5		
Intensive Care Unit	16		
Intensive Chemotherapy Unit	4		
Neonatal Intensive Care Unit	6		
Growing Care Unit	10		
Stroke Care Unit	6		
Emergency and Disaster Medical Center	20 (10)		
Total	597	41	6

※1 10 beds for recovering patients in the Emergency and Disaster Medical Center are included in the number of beds in ( ).

※2 10 beds for recovering patients are not included in the number of beds in ( ).

## Patients

Fiscal Year 2014

Clinical Divisions	Inpatients		Outpatients	
	Total	Per Day	Total	Per Day
Gastroenterology/Hematology/Rheumatology	12,602	34.5	28,409	116.4
Cardiology/Respiratory Medicine/Nephrology	22,112	60.6	27,027	110.8
Endocrinology/Diabetology/Infectious Diseases	9,526	26.1	25,362	103.9
Neurology	2,984	8.2	5,087	20.8
Medical Oncology	3,509	9.6	5,101	20.9
Neuro-Psychiatry	8,014	22.0	23,456	96.1
Pediatrics	13,095	35.9	7,661	31.4
Thoracic/Cardiovascular Surgery	8,628	23.6	5,062	20.7
Gastroenterological/Breast/Endocrine Surgery	13,991	38.3	14,729	60.4
Orthopaedic Surgery	18,477	50.6	38,350	157.2
Dermatology	4,392	12.0	16,342	67.0
Urology	12,985	35.6	18,602	76.2
Ophthalmology	9,091	24.9	23,053	94.5
Otorhinolaryngology	11,658	31.9	13,961	57.2
Radiology	7,534	20.6	43,078	176.5
Obstetrics and Gynecology	11,581	31.7	24,256	99.4
Anesthesiology	357	1.0	14,236	58.3
Neurosurgery	9,285	25.4	6,023	24.7
Plastic and Reconstructive Surgery	4,487	12.3	4,124	16.9
Pediatric Surgery	2,062	5.6	1,837	7.5
Dentistry and Oral Surgery	3,031	8.3	13,243	54.3
Division of General Medicine	—	—	782	3.2
Emergency and Disaster Medical Center	1,018	2.8	701	2.9
Total	190,419	521.7	360,482	1,477.4

Note  
Medical Consultations: 244 Days

Classification	(2010)	(2011)	(2012)	(2013)	(2014)
Number of Inpatients	196,616	194,669	192,027	193,351	190,419
Number of Outpatients	361,296	370,401	370,474	368,847	360,482



Disaster Medical Assistance Team



Positron Emission Computed Tomography



da Vinci Surgical System

The Hirosaki University Library was established in May 1949, and now consists of the Main Library, the Medical Branch. The total number of volumes is about 840,000. In addition to books and serials for study and research, electronic materials such as DVD databases and online facilities, which include 12,000 titles of online journals, are also available. Service is offered throughout the week (with the exception of Saturday and Sunday during seasonal vacations) to not only members of the University, but also visitors from the community (though such service is restricted). Various information, guides for users, catalogues, online journals, study information in the University etc., are available via the Library's webpages.

### Volumes

As of March 31, 2015

Divisions	Main Library		Medical Branch		Total
	Japanese and Chinese	Other Foreign Books	Japanese and Chinese	Other Foreign Books	
Total	499,978	164,414	97,544	74,885	836,821

### Library Usage

Fiscal Year 2014

Divisions	Days Open	Visitors	Book Loans	
			Persons	Books
Main Library	280	124,019	17,658	32,284
Medical Branch	329	33,403	7,879	13,354
Total		157,422	25,537	45,638





## Center for General Education

Founded in Oct. 2001

The Center for General Education (CGE) has determined that the general education program at Hirosaki University should provide all students with the fundamental skills they will need to be successful citizens of the 21st century. The CGE, guided by the basic principles established by the Hirosaki University Education and Research Council, is responsible for designing and adjusting general education programs, improving general education content and methods, and carrying out promotional and informational activities, while continually reassessing and evaluating its performance.



## Computing and Networking Center

Founded in June 1994

The Computing and Networking Center facilitates Hirosaki University's education and research activities, as well as its management and operations work, through the use of its information system and network, comprising 712 personal computers and servers.

In addition, it serves as the main node for the education technology information network SINET4, playing a role as the network center for Aomori's educational institutions.



## Center for Education and Research of Lifelong Learning

Founded in May 1996

As part of our effort to create a more open university, we, in conjunction with local governments throughout Aomori Prefecture, offer lectures open to the public. Moreover, in order to promote lifelong learning for local residents, we are conducting surveys and undertaking related research projects on the living conditions, the learning needs and the issues (including medical and social welfare issues) that are of greatest concern to the community.



## Center for Joint Research

Founded in Apr. 1997

The Center for Joint Research shares the academic assets including patented technology and information that have been accumulated at Hirosaki University with industry and its goal is contribution to education and research at Hirosaki University and development of the community and industries through collaboration and research exchanges with private companies.

It also serves as the dedicated point of contact for cooperation with the community in research activities accepting inquiries regarding science and technology and provides a consultation space for the researchers and the community.



## Health Administration Center

Founded in June 1967

The Health Administration Center aims to offer the best physical and mental health services for students and staff to lead healthy lives on campus. We offer medical examinations, first aid, health consultation, mental health counseling, and research for health maintenance and illness prevention for all students and staff.



## Radioisotope Laboratory

Founded in Oct. 1999

The Radioisotope Laboratory is dedicated to education, and basic and applied research using radioisotopes in the University.



## Center for Instrumental Analysis

Founded in Sep. 2003

The Center for Instrumental Analysis accommodates high-performance analytical instruments and promotes efficient common use of them in order to improve research activities in Hirosaki University. Furthermore, the center opens its facilities to private companies and public institutes in Aomori prefecture to support their research and development.

## Office Organizing Workshops and Courses for the Teacher Qualification Renewal System

Founded in Oct. 2008

The Office Organizing Workshops and Courses for the Teacher Qualification Renewal System, draws upon the distinctive features of this four-year, five-faculty university and offers courses that conform to the goals of the teacher qualification renewal system, and by doing so, aims to contribute to local society.



## Hirosaki University Press

Founded in June 2004

The Hirosaki University Press was founded on the occasion of the establishment of the National University Corporation Hirosaki University. The press distributes and promotes scholarly researches to be published in Hirosaki University and Tohoku region. Hirosaki University Press could associate with the Association of Japanese University Presses from May 2007, thereby contributing to the progress of education and research in Japan.



## Hirosaki University Museum

Founded in Oct. 2012

The Hirosaki University Museum was opened under the theme of "Hirosaki University, past to the future." We display condensed extracts of Hirosaki University including the history from each previous school such as the government established Hirosaki high school, where Osamu Dazai studied, to the current university and various results of research with connections to the future.



## International Education Center

Founded in Apr. 2013

The International Education Center, reorganized in April 2013 from The International Exchange Center, is addressing a variety of activities to promote education that focuses on cross-cultural understanding at Hirosaki University. The new mission of this center is to promote Global Human Resource Development, so students will be prepared for future challenges working in the global field. We provide support and instruction to both international students studying at Hirosaki University and Japanese students who wish to study abroad. The center also offers English classes to promote international communication, runs the English Lounge and supports international activities with the local communities.



## Student Career Center

Founded in Apr. 2004

Our center provides opportunities for students to obtain a wide view of human society and employment, and to find jobs. To these ends, we offer education to improve careers, internship arrangements, guidance for employment, mediation between students and companies, and consultation, etc.



## Office for the Intellectual Property

Founded in Apr. 2004

The Office for the Intellectual Property will return the inventions and achievements of professors and researchers in Hirosaki University to society in the form of intellectual property. As a result, the third mission of the university, to “contribute to society” will be realized.



## Hirosaki University Volunteer Center (HUVC)

Founded in Oct. 2012

With the Great East Japan Earthquake as a trigger, the Hirosaki University Volunteer Center was established. HUVC acts as a bridge between Hirosaki University and local governments, NPOs to perform volunteer dispatch smoothly. HUVC aims for collaboration with local people in solving regional problems. Concurrently, HUVC connects students to local people and provides a place of education to enrich humanity and specialization.





## International Coalition Office

Founded in Apr. 2013

The International Coalition Office drafts the plans of the measures to affect globalization promotion of Hirosaki University. Through the interchange with University-wide Agreements, it is intends to contribute to the further globalization of education and research.



Hirosaki University has organized extraordinary groups of researchers specializing in education, investigation and contribution to society. These centers belong to the various faculties and graduate schools.

Faculty	Center	Director
Faculty of Humanities		<b>Employment Policy Research Center (EPRC)</b>   Professor LEE Youngjun <p>Its goal is contribution to the community through systematic research or investigation on policy solution the local cultural resource and its effective usage considering the community problems from a prospective perspective. It also contributes to human resources working with the community by development of the educational program pointing towards the community. Interaction and social activities in the community have continued through various events.</p>
		<b>Archaeological Research Center for Northern Japan</b>   Professor SEKINE Tatsuhiro <p>Its aim is to make wide-ranging contributions to academic society through excavations, analysis and preservation of buried cultural property on the Jomon archaeological site that ranges widely over northern Japan as well as education, research and social activities regarding archaeology and cultural heritage of the community.  It also intends to build the prospective human society and to revitalize the local community. It is undertaking a cross-field-global human resources development with a mini-museum activity at the exhibition room and using advanced analytical methods on specialized education and vitalization of the local resources by industrial academic, and government cooperation through the process of preserving cultural assets.  The center develops educational programs directed towards the community and organizes various events and stimulating social activities.</p>
Medicine		<b>North Japan Health and Sports Medical Center</b>   Professor NAKAJI Shigeyuki <p>The center aims to promote, support and maintain good health for all through sport and exercise.</p>
		<b>North Japan Transplantation and Stem Cell Research Center</b>   Professor OYAMA Chikara <p>This research center is composed of researchers from the departments of Glycotechnology, Microbiology and Immunology, Digestive Surgery, Cardiology, Respiratory Medicine and Nephrology, Pediatrics, Anesthesiology, Urology, Health Promotion and Disability and Health, and was established to promote co-operative comprehensive transplantation research.</p>

Faculty	Center	Director
Health Sciences	 <p>Center of education and research for community health care and medicine (CERCH)</p> <p>The mission of the Community Healthcare Education and Research Center is to support activities such as the prevention of lifestyle-related diseases and falls of aged people. This center in the division of Health Sciences is run by multidisciplinary staff, nursing, physical therapy and occupational therapy, amongst others, and plays a role as a collaborator for health care in the community.</p>	Professor MARIYA Yasushi
	 <p>Research Center for Biomedical Sciences</p> <p>This center aims for promotion and improvement in education and research activities through cooperation of the members of the Hirosaki University Graduate School of Health Sciences. The members are currently performing education and research activities focusing on one of the Hirosaki University Institutional Research projects.</p>	Professor NAKAMURA Toshiya
Science and Technology	 <p>Research Center for Natural Disaster Prevention</p> <p>Earthquake disaster prevention is one of the essential requirements to realize a safe and secure society for our country that has been damaged again and again by large earthquakes. Weather disasters including tornados and heavy rain also occur frequently, and there are active volcanos in this area.</p> <p>This center is mainly researching on earthquake disaster, but also researching on weather disasters, volcanic disasters, and geotechnical hazards and gives instructions regarding how to prevent or mitigate natural disasters.</p>	Professor ARIGA Yoshiaki
Faculty of Agriculture and Life Science	 <p>Utilization of Regional Resources Research Center</p> <p>This center is researching the following three themes to discover gene resources in the area and utilize it to them with industry.</p> <ol style="list-style-type: none"> <li>1) Research and utilization of unknown biologically active secondary metabolites, from microbes found mainly in the Tsugaru area.</li> <li>2) Research on utilization of unutilized agricultural, forestry and marine products in North Tohoku area.</li> <li>3) Research on value-added local products in Aomori including apples and sea cucumbers and on the sixth sector of industry</li> </ol>	Professor HASHIMOTO Masaru

## Hirosaki University Institutional Research Grant 2014

In order to carry out the research goals of the "Midterm Plan and Objectives," we chose only the highest quality themes to represent this institution and receive official Hirosaki University Research status. First, potential projects were reviewed by a committee of judges, which included outside evaluators. Next, researchers defended their projects in an oral interview and underwent the president's evaluation. Along with new entries, four ongoing research projects were evaluated each time to decide whether they merited continued support.

Given the importance of the Great East Japan Earthquake, themes having a clear connection to restoration and reconstruction were given high priority, with the aim to have research develop as quickly as possible. Furthermore, in order to improve the level of young researchers and cultivate the next generation of institutional researchers, the university has selected "youth institutional research" projects.

## 1. Institutional Research Grant

Faculty	Title	Representative	Title of the Research	Divisions (the Year of Start)
Medicine	Professor	ITO Ken	Developing a Method of Preventing Brain Degenerative Disease through the Creation of a New Anti-aging Method.	New (2013)
Medicine	Assistant Professor	YAMADA Katsuya	Developing Cancer Cell Evaluations and New Examination and Treatment Strategies Based on Cellular Metabolism Imaging	Continued (2012)
Medicine	Professor	NAKAJI Shigeyuki	Comprehensive Cohort Study on the Etiology and Prevention of Modern Diseases: An Examination of the Iwaki Health Promotion Project	Continued (2012)

## 2. Institutional Research Grant (Research Projects Related to the Great East Japan Earthquake)

Faculty	Title	Representative	Title of the Research	Divisions (the Year of Start)
Institute for Radiation Medicine	Professor	TOKONAMI Shinji	A Developmental Approach to Evaluating Radiation Exposure Doses and Analyzing Radiation Effects on the Body	New (2014)

## 3. Youth Institutional Research Grant for Young Scientists

Faculty	Title	Representative	Title of the Research	Divisions (the Year of Start)
Agriculture & Life Sciences	Assistant Professor	KASHIWAGI Akiko	The Use and Understanding of Living Things through an Analysis of Biosystems Dynamics	New (2014)
Health Sciences	Lecturer	CHIBA Mitsuru	Disease Exosome Encyclopedia -A new disease marker search strategy and general functional analysis	Continued (2013)



As of May 1, 2015

## President, Executive Director, Auditor

President		Executive Director and Vice President		Auditor		Assistant to the President		Vice Executive Director		Subtotal		Total
M	F	M	F	M	F	M	F	M	F	M	F	
1	—	7	—	2(1)	—	4(3)	—	3(3)	—	17(7)	—	17(7)

Note: Part-time positions are shown in parentheses and are included in the total number

Note: For Vice Presidents, Assistants to the President, and Vice Executive Directors, numbers include cases where one person holds more than one position

Divisions	Professors		Associate Professors		Lecturers		Assistant Professors		Research Associates		Teachers of Attached School		Subtotal		Other Staff		Total		Statistics
	M	F	M	F	M	F	M	F	M	F	M	F	M	F	M	F	M	F	
Total Number of Present Employees	185	26	167	29	77	23	135	41	45	22	45	53	654	194	351	689	1,005	883	1,888
Administration Bureau	—	—	—	—	—	—	—	—	—	—	—	—	—	—	126	54	126	54	180
Faculty of Humanities	25	7	22	5	7	3	—	—	—	—	—	—	54	15	3	5	57	20	77
Faculty of Education	32	10	20	4	13	4	—	—	—	1	45	53	110	72	11	5	121	77	198
Graduate School of Medicine	38	—	31	1	13	1	58	16	12	7	—	—	152	25	15	5	167	30	197
Graduate School of Health Sciences	17	9	8	8	13	7	10	11	1	4	—	—	49	39	6	2	55	41	96
University Hospital	—	—	10	1	26	3	40	10	31	10	—	—	107	24	150	603	257	627	884
Graduate School of Science and Technology	33	—	33	2	3	—	10	1	1	—	—	—	80	3	18	5	98	8	106
Faculty of Agriculture and Life Sciences	24	—	28	4	—	—	11	1	—	—	—	—	63	5	16	7	79	12	91
Graduate School of Regional Studies	1	—	2	—	—	—	—	—	—	—	—	—	3	—	—	—	3	—	3
North Japan Research Institute for Sustainable Energy	4	—	4	—	—	—	—	—	—	—	—	—	8	—	—	—	8	—	8
The Shirakami Institute for Environmental Sciences	1	—	1	—	—	—	1	—	—	—	—	—	3	—	—	—	3	—	3
Institute of Radiation Emergency Medicine	3	—	—	—	—	—	3	—	—	—	—	—	6	—	2	—	8	—	8
Institute for Food Science Research	2	—	2	—	—	—	—	—	—	—	—	—	4	—	—	—	4	—	4
Computing and Networking Center	—	—	1	—	—	—	—	—	—	—	—	—	1	—	—	—	1	—	1
Center for Education and Research of Lifelong Learning	—	—	1	—	1	—	—	—	—	—	—	—	2	—	—	—	2	—	2
Center for Joint Research	1	—	—	—	—	—	—	—	—	—	—	—	1	—	—	—	1	—	1
Health Administration Center	1	—	—	1	—	1	—	—	—	—	—	—	1	2	—	2	1	4	5
Radioisotope Laboratory	—	—	—	—	—	—	—	—	—	—	—	—	—	—	—	1	—	1	1
International Education Center	1	—	2	3	1	2	—	1	—	—	—	—	4	6	—	—	4	6	10
Student Employment Support Center	—	—	1	—	—	—	—	—	—	—	—	—	1	—	—	—	1	—	1
International Relations Office	1	—	—	—	—	—	—	—	—	—	—	—	1	—	—	—	1	—	1
COI Research Promotion Organization	1	—	1	—	—	2	—	—	—	—	—	—	2	2	—	—	2	2	4
Aomori Campus	—	—	—	—	—	—	—	—	—	—	—	—	—	—	4	—	4	—	4
COC Promotion Office	—	—	—	—	—	—	2	—	—	—	—	—	2	—	—	—	2	—	2
Office for the Promotion of Gender Equality	—	—	—	—	—	—	—	1	—	—	—	—	—	1	—	—	—	1	1

Note: Numbers for staff working in the Corporate Internal Audit Office and President's Office are included in the numbers for the Administration Bureau.

## Application and Matriculation

Fiscal Year 2015

Divisions		Annual Admission Capacity	Applicant Capacity				Enrollment Capacity		
			M	F	Total	Competition Rate	M	F	Total
Faculty of Humanities		345	547	497	1,044	3.03	190	161	351
Faculty of Education		240	315	442	757	3.15	103	142	245
School of Medicine (Medicine)		112	677	314	991	8.85	72	40	112
School of Medicine (Health Sciences)		200	321	528	849	4.25	65	135	200
Faculty of Science and Technology		300	826	175	1,001	3.34	255	47	302
Faculty of Agriculture and Life Science		185	556	305	861	4.65	113	72	185
Total		1,382	3,242	2,261	5,503	3.98	798	597	1,395
GRADUATE SCHOOLS	Humanities and Social Sciences (Master's Course)	16	8	10	18	1.13	7	9	16
	Education (Master's Course)	32	16	24	40	1.25	14	19	33
	Medicine (Doctoral Course)	50	28	14	42	0.84	28	14	42
	Health Sciences (Master's Course)	25	17	12	29	1.16	17	12	29
	Health Sciences (Doctoral Course)	9	8	7	15	1.67	8	3	11
	Science and Technology (Master's Course)	90	106	13	119	1.32	84	12	96
	Science and Technology (Doctoral Course)	8	4	4	8	1.00	4	3	7
	Agriculture and Life Science (Master's Course)	60	22	14	36	0.60	20	12	32
	Regional Studies (Doctoral Course)	6	9	3	12	2.00	8	2	10
Total		296	218	101	319	1.08	190	86	276

Note: International students admitted under special circumstances are excluded.

## Regional Distribution of Entrants

Fiscal Year 2015

Divisions	Enrollment Capacity	Regional Distribution						
		Hokkaido	Tohoku		Kanto	Chu-bu	Kinki	Other
			Aomori Pref.	Other pref.				
Faculty of Humanities	351	126	147	65	8	5	0	0
Faculty of Education	245	27	129	58	21	9	0	1
School of Medicine (Medicine)	112	5	44	18	29	8	6	2
School of Medicine (Health Sciences)	200	51	77	56	7	4	4	1
Faculty of Science and Technology	302	111	122	49	12	4	2	2
Faculty of Agriculture and Life Science	185	54	48	40	27	11	2	3
Total	1,395	374	567	286	104	41	14	9

## Second-Year-Transfer Student

Fiscal Year 2014

Divisions	Annual Admission Capacity	Applicant Capacity				Enrollment Capacity		
		M	F	Total	Competition Rate	M	F	Total
School of Medicine (Medicine)	20	270	77	347	17.4	16	4	20

Note: October 1, 2013 admission to the School of Medicine was possible.

## Third-Year-Transfer Student

Fiscal Year 2015

Divisions	Annual Admission Capacity	Applicant Capacity				Enrollment Capacity		
		M	F	Total	Competition Rate	M	F	Total
School of Medicine (Health Sciences)	30	11	14	25	0.83	3	3	6
Faculty of Science and Technology	10	8	3	11	1.10	3	1	4
Faculty of Agriculture and Life Science	*a few	10	7	17	—	3	2	5
Total	40	29	24	53	1.33	9	6	15

Note: The sign \* is the number of unqualified candidates

## Undergraduates

As of May 1, 2015

Faculties	Departments and Courses	Annual Admission Capacity	Second year Transfer Student	Third year Transfer Student	Enrollment Capacity	Actual Enrollment													Total
						Freshmen		Sophomores		Juniors		Seniors		5th year		6th year			
						M	F	M	F	M	F	M	F	M	F	M	F		
Humanities	Humanities and Cultural Studies	115	—	—	460	52	65	43	70	44	68	52	93	—	—	—	—	487	
	Social Science and Social System Studies	110	—	—	440	52	62	50	62	57	56	68	64	—	—	—	—	471	
	Economics and Commercial Sciences	120	—	—	480	93	35	85	42	85	38	106	42	—	—	—	—	526	
	Subtotal	345	—	—	1,380	197	162	178	174	186	162	226	199	—	—	—	—	1,484	
Education	Teacher Training Division	145	—	—	580	73	72	69	78	67	75	99	86	—	—	—	—	619	
	School Nurse Training Division	25	—	—	100	—	26	—	25	1	24	—	27	—	—	—	—	103	
	Community Education Training Division	70	—	—	280	30	44	33	43	33	43	37	51	—	—	—	—	314	
	Subtotal	240	—	—	960	103	142	102	146	101	142	136	164	—	—	—	—	1,036	
Medicine	Medicine	112	20	—	746	74	44	93	45	88	46	88	51	88	34	92	29	772	
	Health Sciences	200	—	30	860	67	135	63	136	70	134	91	136	—	—	—	—	832	
	Subtotal	312	20	30	1,606	141	179	156	181	158	180	179	187	88	34	92	29	1,604	
Science and Technology	Mathematical Sciences	40	—	—	160	39	1	35	6	34	6	38	7	—	—	—	—	166	
	Advanced Physics	40	—	—	160	37	3	36	3	34	6	38	6	—	—	—	—	163	
	Frontier Materials Chemistry	46	—	—	184	40	8	33	12	38	8	46	11	—	—	—	—	196	
	Earth and Environmental Sciences	58	—	—	232	35	24	39	19	39	18	46	20	—	—	—	—	240	
	Electronics and Information Technology	58	—	—	232	53	5	55	3	57	4	60	3	—	—	—	—	240	
	Intelligent Machines and System Engineering	58	—	—	232	52	6	50	8	52	5	62	4	—	—	—	—	239	
	Common Faculty	—	—	10	20	—	—	—	—	3	1	5	—	—	—	—	—	9	
	Subtotal	300	—	10	1,220	256	47	248	51	257	48	295	51	—	—	—	—	1,253	
Agriculture and Life Science	Biology	40	—	—	160	26	15	22	19	22	20	26	22	—	—	—	—	172	
	Biochemistry and Molecular Biology	40	—	—	160	24	16	23	17	23	17	30	23	—	—	—	—	173	
	Applied Biosciences	35	—	—	140	22	13	22	13	23	14	21	18	—	—	—	—	146	
	Agriculture and Horticulture	40	—	—	160	22	19	21	20	28	13	21	24	—	—	—	—	168	
	Regional Environmental Science	30	—	—	120	19	11	22	8	25	6	23	9	—	—	—	—	123	
	Subtotal	185	—	—	740	113	74	110	77	121	70	121	96	—	—	—	—	782	
Total		1,382	20	40	5,906	810	604	794	629	823	602	957	697	88	34	92	29	6,159	



## Graduate Schools

As of May 1, 2015

Divisions		Annual Admission Capacity	Enrollment Capacity	Actual Enrollment								Total
				Freshmen		Sophomores		Juniors		Seniors		
				M	F	M	F	M	F	M	F	
Graduate Schools	Humanities and Social Sciences (Master's Course)	16	32	9	14	12	11	—	—	—	—	46
	Education (Master's Course)	32	64	14	19	19	25	—	—	—	—	77
	Medicine (Doctoral Course)	50	200	32	15	30	15	30	15	53	23	213
	Medicine (Doctoral Course) (before reorganization)	—	—	—	—	—	—	—	—	—	1	1
	Health Sciences (Master's Course)	25	50	17	12	19	18	—	—	—	—	66
	Health Sciences (Doctoral Course)	9	27	8	3	2	8	11	7	—	—	39
	Science and Technology (Master's Course)	90	180	85	13	91	14	—	—	—	—	203
	Science and Technology (Doctoral Course)	8	24	6	3	7	3	17	—	—	—	36
	Agriculture and Life Science (Master's Course)	60	120	21	14	34	23	—	—	—	—	92
	Regional Studies (Doctoral Course)	6	18	8	2	5	2	12	6	—	—	35
	Subtotal	296	715	200	95	219	119	70	28	53	24	808
The United Graduate School of Agricultural Sciences, Iwate University (Doctoral Course) Note: The current figure indicates the number of students who belong to Hirosaki University (supervising educators)		32	96	7	2	9	1	4	1	—	—	24
Total		328	811	207	97	228	120	74	29	53	24	832

## Attached School (Faculty of Education)

As of May 1, 2015

Divisions	Enrollment Capacity	Classes	Actual Enrollment						Total
			1st Year	2nd Year	3rd Year	4th Year	5th Year	6th Year	
Kindergarten	90	4	3years 24	4years 22	5years 30	—	—	—	76
Elementary School	684	21	93	84	105	88	91	111	572
Junior High School	565	15	163	196	200	—	—	—	559
School for Special Needs Education			Lower		Middle		Higher		
(Elementary)	18	3	5		5		5		15
(Junior High)	18	3	6	6	6	—	—	—	18
(Senior High)	24	3	8	8	8	—	—	—	24
Total	1,399								1,264

## Undergraduates

Divisions \ Fiscal Year		(1950-2009)	(2010)	(2011)	(2012)	(2013)	(2014)	Total
Faculty of Arts and Science		1,392	—	—	—	—	—	1,392
Faculty of Humanities		10,513	308	318	336	332	325	12,132
Faculty of Education	4 Year Course	15,548	244	241	235	234	216	16,718
	2 Year Course	1,613	—	—	—	—	—	1,613
	Subtotal	17,161	244	241	235	234	216	18,331
School of Medicine (Medicine)		5,232	90	97	107	110	115	5,751
School of Medicine (Health Sciences)		1,281	210	210	212	207	191	2,311
Faculty of Science		5,112	—	—	—	—	—	5,112
Faculty of Science and Technology		2,569	285	301	285	293	294	4,027
Faculty of Agriculture		4,541	—	—	—	—	—	4,541
Faculty of Agriculture and Life Science		1,673	175	190	185	182	176	2,581
Total		49,474	1,312	1,357	1,360	1,358	1,317	56,178

Note:

- The Faculty of Arts and Science was reorganized and divided into the Faculty of Humanities and the Faculty of Science in April 1960.
- The Faculty of Science and Faculty of Agriculture were reorganized into the Faculty of Science and Technology and the Faculty of Agriculture and Life Science, respectively, in April 1997.

## Postgraduates

Divisions \ Fiscal Year		(1950-2009)	(2010)	(2011)	(2012)	(2013)	(2014)	Total
Humanities (Master's Course)		111	—	—	—	—	—	111
Humanities and Social Sciences (Master's Course)		134	6	10	12	11	9	182
Education (Master's Course)		502	29	24	24	29	33	641
Medicine (Doctoral Course)		1,672	43	42	46	58	39	1,900
Medicine (Master's Course)		54	—	—	—	—	—	54
Health Sciences (Master's Course)		43	21	26	22	20	25	157
Health Sciences (Doctoral Course)		9	7	10	8	13	4	51
Science (Master's Course)		844	—	—	—	—	—	844
Science and Technology (Master's Course)		153	—	—	—	—	—	153
Science and Technology (Master's Course)		422	78	111	107	82	85	885
Science and Technology (Doctoral Course)		22	1	5	1	4	7	40
Agriculture (Master's Course)		435	—	—	—	—	—	435
Agriculture and Life Science (Master's Course)		323	55	44	50	39	43	554
Regional Studies (Doctoral Course)		13	2	4	1	4	3	27
Total		4,737	242	276	271	260	248	6,034

Note:

- Humanities (Master's Course) was reorganized into Humanities and Social Sciences (Master's Course) in April 1999.
- Science (Master's Course) was reorganized into Science and Technology (Master's Course) in April 2002.
- Agriculture (Master's Course) was reorganized into Agriculture and Life Science (Master's Course) in April 2002.
- Science and Technology (Master's Course) was reorganized into Science and Technology (Doctoral Course) in April 2005.

## One-Year Postgraduate Courses

Divisions \ Fiscal Year		(1960-1998)	Total
Humanities (Closed in March, 1999)		41	41
Education (Closed in March, 2000)		100	100
Science (Closed in March, 2001)		70	70
Agriculture (Closed in March, 2001)		28	28

## School of Allied Medical Sciences

Divisions \ Fiscal Year		(1975-2003)	Total
Departments		4,615	4,615
Special Course		548	548

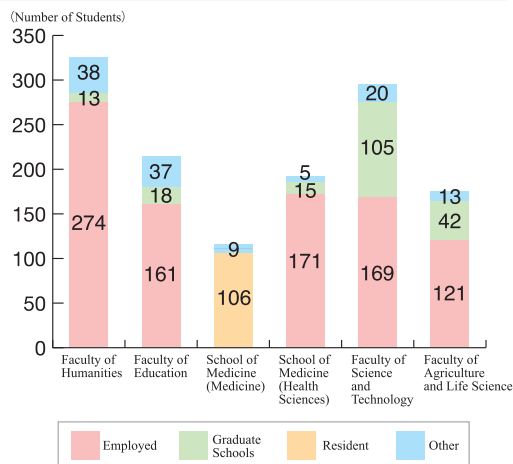
The number of students finding employment, listed by business.

As of May 1, 2015

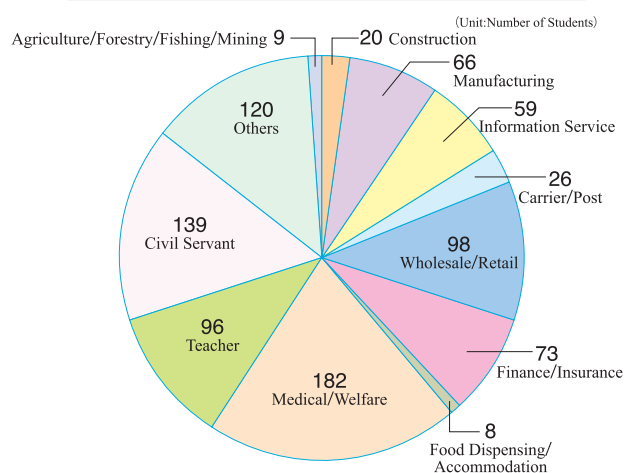
Divisions		Faculty of Humanities	Faculty of Education	School of Medicine (Medicine)	School of Medicine (Health Sciences)	Faculty of Science and Technology	Faculty of Agriculture and Life Science	Total
Placements								
Graduates		325	216	115	191	294	176	1,317
Number of Students Placed	Agriculture/Forestry/Fishing/Mining	—	1	—	—	2	6	9
	Construction	5	2	—	—	10	3	20
	Manufacturing	21	5	—	—	20	20	66
	Information Service	22	5	—	—	26	6	59
	Carrier/Post	14	—	—	—	4	8	26
	Wholesale/Retail	44	14	—	—	15	25	98
	Finance/Insurance	55	7	—	—	7	4	73
	Food Dispensing/Accommodation	3	1	—	—	2	2	8
	Medical/Welfare	5	7	—	168	1	1	182
	Teacher	Elementary School	31	—	—	—	—	31
		Junior High School	26	—	—	3	—	31
		Senior High School	9	—	—	6	2	18
		Other	16	—	—	—	—	16
	Civil Servant	National	1	—	—	9	4	25
		Local	42	—	—	32	20	114
	Others		49	—	3	32	20	120
	Total		274	161	—	171	121	896
Graduate Schools		13	18	—	15	105	42	193
Resident		—	—	106	—	—	—	106
Other		38	37	9	5	20	13	122

Note: The number of teachers at secondary schools, higher vocational schools, universities, special needs schools and kindergartens.

Placement after graduation according to department



The number of students finding employment, listed by industry.





## Degrees Conferred

Fiscal Year 2014

Divisions	Degrees Conferred					
	Course Doctorate	Dissertation Doctorate	Total	New System		Old System
				Course Doctorate	Dissertation Doctorate	
Master's Degree (Arts and Letters)	—	—	—	111	—	—
Master's Degree (Humanities and Social Sciences)	9	—	9	182	—	—
Master's Degree (Education)	33	—	33	641	—	—
Doctorate (Medicine)	39	1	40	1,900	882	469
Master's Degree (Health Sciences)	25	—	25	211	—	—
Doctorate (Health Sciences)	4	1	5	51	2	—
Master's Degree (Science)	—	—	—	844	—	—
Doctorate (Science or Technology)	7	—	7	41	—	—
Master's Degree (Science and Technology)	85	—	85	1,038	—	—
Master's Degree (Agriculture)	—	—	—	435	—	—
Master's Degree (Agriculture and Life Science)	43	—	43	554	—	—
Doctorate (Regional Studies)	3	1	4	30	4	—
Total	248	3	251	6,038	888	469

## Publications

Fiscal Year 2014

Faculties, etc.	Publications
Faculty of Humanities	Studies in the Humanities and Social Sciences
Faculty of Education	Bulletin of the Faculty of Education, Hirosaki University CROSSROADS : Journal for Educational Research Published by the Faculty of Education, Hirosaki University
Graduate School of Medicine	Hirosaki Medical Journal
Graduate School of Health Sciences	Journal of Health Science Research
Faculty of Agriculture and Life Science	Bulletin of the Faculty of Agriculture and Life Science, Hirosaki University
Graduate School of Regional Studies	Bulletin of the Regional Studies Doctoral Course Graduate School of Hirosaki University
The Shirakami Institute for Environmental Sciences	SHIRAKAMI-SANCHI
North Japan Research Institute for Sustainable Energy	Hirosaki University's Annual Report for the North Japan Research Institute for Sustainable Energy

Divisions Faculties, etc.		Enrollment (A)	Scholarships			Percentage
			Type I	Type II	Total (B)	$\frac{(B)}{(A)}\%$
Faculty of Humanities		1,462	420	443	863	59.0
Faculty of Education		1,006	262	306	568	56.5
School of Medicine (Medicine)		755	158	186	344	45.6
School of Medicine (Health Sciences)		820	286	279	565	68.9
Faculty of Science and Technology		1,264	336	404	740	58.5
Faculty of Agriculture and Life Science		771	202	220	422	54.7
Subtotal		6,078	1,664	1,838	3,502	57.6
Graduate Schools	Humanities and Social Sciences	41	8	3	11	26.8
	Education	80	29	5	34	42.5
	Medicine (before organization)	1	—	—	—	—
	Medicine	205	—	—	—	—
	Health Sciences (Master's Course)	62	10	—	10	16.1
	Health Sciences (Doctoral Course)	33	3	1	4	12.1
	Science and Technology (Master's Course)	192	104	25	129	67.2
	Science and Technology (Doctoral Course)	35	8	—	8	22.9
	Agriculture and Life Science	99	41	6	47	47.5
	Regional Studies	36	3	—	3	8.3
Subtotal		784	206	40	246	31.4
Total		6,862	1,870	1,878	3,748	54.6

## University-wide Agreements

As of May 1, 2015

University	Country	Date of Agreement
University of Tennessee at Martin	U.S.A.	Jul. 8, 1980
University Bordeaux Montaigne	French Republic	Jan. 31, 1994
Harbin Normal University	People's Republic of China	Aug. 1, 1995
Far Eastern State Medical University	Russian Federation	Dec. 14, 1995
University of Maine	U.S.A.	Jun. 26, 1997
Hyperion University	Romania	Sep. 11, 1998
University of Trier	Federal Republic of Germany	May. 3, 1999
Yanbian University	People's Republic of China	Aug. 28, 2000
M. V. Lomonosov Moscow State University	Russian Federation	Sep. 20, 2000
University of Otago	New Zealand	Sep. 20, 2000
Zhengzhou University	People's Republic of China	Oct. 12, 2000
Chiang Mai University	Kingdom of Thailand	Nov. 2, 2000
University of Debrecen	Republic of Hungary	Dec. 22, 2000
San Diego State University	U.S.A.	Mar. 19, 2001
Nam Seoul University	Republic of Korea	Jun. 1, 2001
Kyungpook National University	Republic of Korea	Jul. 11, 2001
University of Saskatchewan	Canada	Dec. 7, 2001
Pusan National University	Republic of Korea	Dec. 12, 2001
Auckland University of Technology	New Zealand	Dec. 12, 2001
Irkutsk State University	Russian Federation	Mar. 20, 2002
University of La Frontera	Republic of Chile	Jun. 25, 2002
Kyonggi University	Republic of Korea	Sep. 25, 2002
Mount Royal University	Canada	Jun. 1, 2005
Thompson Rivers University	Canada	Oct. 19, 2006
Khon Kaen University	Kingdom of Thailand	May. 6, 2008
Dalian University of Technology	People's Republic of China	Dec. 28, 2009

## Discipline-specific Agreements

As of May 1, 2015

Faculty	Affiliate Institution	Country	Date of Agreement
Faculty of Humanities	Ruralia Institute of the University of Helsinki	Republic of Finland	Sep. 7, 2009
Faculty of Education	University of South Carolina	U.S.A.	Jul. 20, 1994
School of Medicine	University of Tennessee Center for the Health Sciences	U.S.A.	May 19, 1982
	University of West Indies	Jamaica	Feb. 25, 2002
	China Medical University	People's Republic of China	Oct. 25, 1982
	University of Ljubljana	Republic of Slovenia	Nov. 28, 2014
Graduate School of Health Sciences	Centre for Radiation Protection Research, Stockholm University	Kingdom of Sweden	Mar. 6, 2013
Faculty of Agriculture and Life Science	College of Agriculture and Biotechnology, China Agricultural University	People's Republic of China	Aug. 1, 2005
	Kasetsart University Agriculture Department	Kingdom of Thailand	Mar. 27, 2015
North Japan Research Institute for Sustainable Energy	Thammasat University, Faculty of Science and Technology	Kingdom of Thailand	Mar. 14, 2013
	College of Chemistry and Chemical Engineering, Taiyuan University of Technology	People's Republic of China	Jun. 9, 2013
	Institute of Coal Chemical Engineering, Taiyuan University of Technology	People's Republic of China	Jun. 9, 2013
Institute of Radiation Emergency Medicine	Korea Institute of Radiological and Medical Sciences	Republic of Korea	Jan. 21, 2013
	University of Pannonia, Faculty of Engineering Institute of Radiochemistry and Radioecology	Republic of Hungary	Mar. 18, 2013
	Chulalongkorn University, School of Engineering, Department of Nuclear Engineering	Kingdom of Thailand	Nov. 20, 2013
	Institute for Nuclear Science and Technology, Vietnam Atomic Energy Institute	Socialist Republic of Vietnam	Nov. 22, 2013
University Hospital	Pusan University Hospital Clinical Testing Center	Republic of Korea	Nov. 17, 2012
The Shirakami Institute for Environmental Sciences	Far Eastern Division of the Russian Academy of Sciences, Botanical Garden Institute, Vladivostok	Russian Federation	Feb. 20, 2015



As of May 1, 2015

Divisions			Country																						
Faculties, etc.			China	Taiwan	South Korea	Thailand	Malaysia	Indonesia	Bangladesh	Mongolia	Vietnam	Myanmar	New Zealand	Canada	U.S.A.	Chile	Hungary	Romania	Germany	France	Algeria	Ghana	Total		
Undergraduates	Private Regular Students	Humanities	16	1	1		3																	21	
		Education	1																					1	
		Medicine	1		1							1												3	
		Health Sciences	1																					1	
		Science and Technology	3				1																	4	
		Agriculture and Life Science	2								1														3
	Private Research Students	Education	3																						3
		Humanities	1																						1
		Agriculture and Life Science	1							1															2
	Private Subject Students and Auditors	Education	10		8	7							1	2	6	1		1	2	4					42
		Science and Technology	3																						3
		Agriculture and Life Science	3														1								4
	Foreign Students funded by the Japanese Government (Ministry of Education, Culture, Sports, Science and Technology) Japanese Studies Scholarship Students		Humanities			1	1					1													3
Graduates	Foreign Students funded by the Japanese Government (Ministry of Education, Culture, Sports, Science and Technology) Regular Scholarship Students	Humanities and Social Sciences	1																					1	
		Science and Technology				2		4													2			8	
		Agriculture and Life Science				1																		1	
	Foreign Students funded by the Japanese Government (Ministry of Education, Culture, Sports, Science and Technology) Research Scholarship Students	Medicine															1							1	
		Private Regular Students	Humanities and Social Sciences	15																			1		16
	Education		3																					3	
	Medicine		4																					4	
	Health Sciences					1																		1	
	Science and Technology		8			1	2	3																14	
	Agriculture and Life Science		8																					8	
	Regional Studies		3								1													4	
	Agricultural Sciences	1					1	1															3		
	Private Research Students	Science and Technology	1	1																				2	
Total			89	2	11	13	6	8	1	1	3	1	1	2	6	2	1	1	2	4	2	1	157		

In order to promote the exchange of knowledge and personnel through the international exchange of overseas universities (including Overseas Partner Institutions), the Overseas Center Office is doing the following work:

1. Work to secure the most elite exchange students  
(PR activities for the university, responding to inquiries from prospective study-abroad students)
2. Support activities for students from the university who have gone overseas to study
3. Network building and cooperation with graduates and other students who have had study abroad experience at Hirosaki University
4. Support for exchanging knowledge with educational and research institutions in countries where the university has established a relationship (collecting and offering information, organizing, etc.)
5. Other activities that contribute to the internationalization of Hirosaki University.

#### (1) Dalian Office (People's Republic of China)

- Date established: July 13th, 2012
- Place established: At Dalian University of Technology's Energy Laboratory



#### (2) Khon Kaen University (Kingdom of Thailand)

- Date established: December 14, 2012
- Place established: At Khon Kaen University's Faculty of Humanities and Social Sciences' Rattanapittaya Building



#### (3) Yanbian Office (People's Republic of China)

- Date established: October 15, 2013
- Place established: Yanbian University International Exchange Office



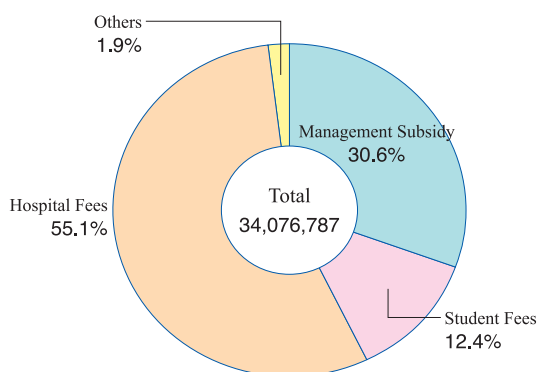
Annual Revenue Unit: Thousand Yen

Divisions	Revenue
Management Subsidy	10,441,620
Revenue	23,635,167
Student Fees	4,206,319
Hospital Fees	18,783,960
Facility Charges	114,613
Farm Income	13,606
Income from Disposal	471
Interest	12,454
Others	503,744
<b>Total</b>	<b>34,076,787</b>
Management Subsidy	10,441,620
Student Fees	4,206,319
Hospital Fees	18,783,960
Others	644,888

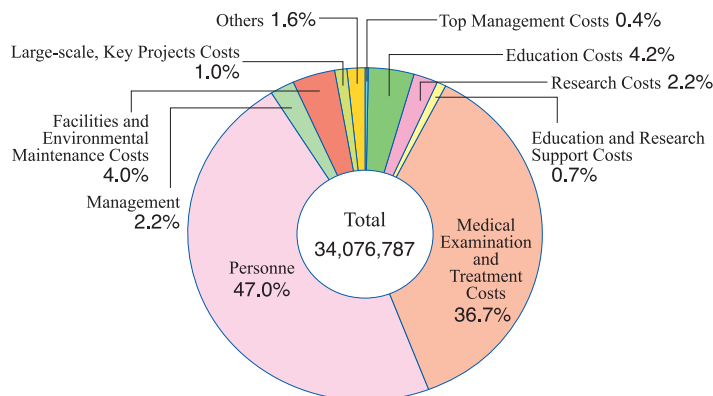
Annual Expenditures Unit: Thousand Yen

Division	Expenditure
Top Management Costs	558,439
Strategic Expenditures	152,272
Education Costs	1,414,857
Research Costs	741,851
Education and Research Support Costs	254,150
Medical Examination and Treatment Costs	12,499,753
Personnel	16,007,081
Management	735,457
Facilities and Environmental Maintenance Costs	1,360,815
Large-scale, Key Projects Costs	352,112
<b>Total</b>	<b>34,076,787</b>

Annual Revenue (Unit: Thousand Yen)



Annual Expenditures (Unit: Thousand Yen)



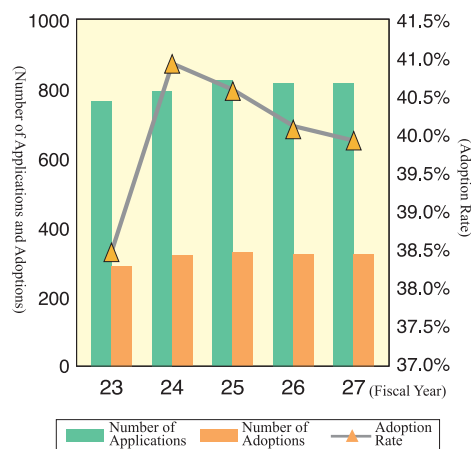
Grant-in-Aid for Scientific Research (2015)

Unit : Thousand Yen

Subjects for Research	Number of Grants	Amount		
		Direct Expense	Indirect Expense	Total
Scientific Research on Innovative Areas	8	41,400	12,420	53,820
Scientific Research (A)	5	43,800	13,140	56,940
Scientific Research (B)	21	82,500	24,750	107,250
Scientific Research (C)	162	174,100	52,230	226,330
Challenging Exploratory Research	41	39,900	11,970	51,870
Young Scientists (A)	2	6,400	1,920	8,320
Young Scientists (B)	86	83,300	24,990	108,290
Research Activity Start-up	2	2,000	600	2,600
<b>Total</b>	<b>327</b>	<b>473,400</b>	<b>142,020</b>	<b>615,420</b>

Note: The number and amounts of money are based on informal decision notices (as of May 2015).  
The allocated amounts as per the plan at the start of 2014 for the funds and part of the funds for research items were included.

Grant-in-Aid for Scientific Research Application and Adoption Rates (KAKENHI)



## Status of accepted external funding(2014)

Unit: Thousand Yen

Departments	Joint Research with the Private Sector Expenditure		Research Grants		Contributions	
	Number (of cases)	Amount	Number (of cases)	Amount	Number (of cases)	Amount
Faculty of Humanities	—	—	4	2,961	4	3,490
Faculty of Education	3	6,800	3	1,921	6	3,100
Graduate School of Medicine	13	29,773	30	337,973	473	617,719
Graduate School of Health Sciences	1	300	8	28,599	29	15,900
University Hospital	—	—	2	815	35	27,084
Graduate School of Science and Technology	15	15,718	18	32,352	20	19,440
Faculty of Agriculture and Life Science	12	14,082	15	28,334	19	15,665
Graduate School of Regional Studies	—	—	1	6,000	—	—
North Japan Research Institute for Sustainable Energy	1	500	6	31,038	5	4,460
The Shirakami Institute for Environmental Sciences	—	—	—	—	—	—
Institute for Food Science Research	—	—	3	6,976	—	—
Institute of Radiation Emergency Medicine	—	—	2	16,650	—	—
Administration Bureau	—	—	—	—	95	14,683
21st Century Education Center	—	—	—	—	—	—
Center for Education and Research of Lifelong Learning	—	—	—	—	—	—
Center for Joint Research	3	1,520	—	—	—	—
Affiliated Library	—	—	—	—	1	200
Health Administration Center	—	—	—	—	3	1,420
Total	48	68,693	92	493,619	690	723,161

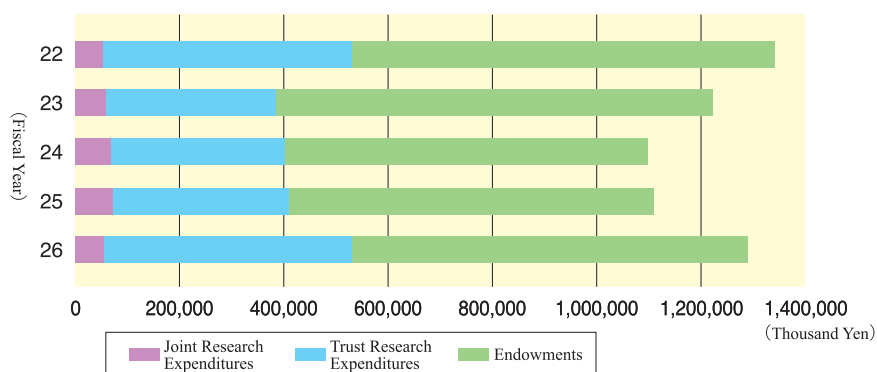
## Note

- Number of Cases: including multi-year contracts
- Amount: amount received in 2014
- Trust research expenditures at the University Hospital do not include clinical trials.

## Grant from Outside the University

Unit: Thousand Yen

Classification	Joint Research Expenditures		Trust Research Expenditures		Endowments	
	Number Received	Amount Received	Number Received	Amount Received	Number Received	Amount Received
2010	41	54,349	68	501,629	680	784,532
2011	44	60,356	86	324,153	729	820,922
2012	54	67,585	100	341,113	703	682,904
2013	38	73,059	100	347,897	663	710,030
2014	48	68,693	92	493,619	690	723,161





Faculties, etc.	Address		Phone
Administration Bureau Faculty of Humanities Faculty of Education Center for Educational Research and Practice Center for Teacher Education Research and Development Center for General Education Health Administration Center Office Organizing Workshops and Courses for the Teacher Qualification Renewal System Hirosaki University Press University Museum International Education Center Student Career Center Volunteer Center International Coalition Office University Library 50th Anniversary Auditorium Hirosaki Higher School Foreign Lecturer Residence Office for Promotion of Gender Equality	1, Bunkyo-cho, Hirosaki-shi, Aomori-ken, 036-8560, Japan		0172-36-2111 (Main Switchboard)
Hokumei-Ryo Dormitory (male)	1-8-4, Midorigaoka, Hirosaki-shi, Aomori-ken, 036-8253, Japan		0172-32-3364
International House	2-20-17, Kikyono, Hirosaki-shi, Aomori-ken, 036-8227, Japan		0172-37-6854
Graduate School of Science and Technology Earthquake and Volcano Observatory Faculty of Agriculture and Life Science Faculty of Agriculture and Life Science Gene Research Center Graduate School of Regional Studies Computing and Networking Center Center for Education and Research of Lifelong Learning Center for Joint Research Center for Instrumental Analysis Office for the Intellectual Property	3, Bunkyo-cho, Hirosaki-shi, Aomori-ken, 036-8561, Japan		0172-36-2111 (Main Switchboard)
Graduate School of Medicine Institute of Brain Science Center for Advanced Medical Research Institute for Animal Experiments Radioisotope Laboratory Medical Branch Library	University Medical Center	5, Zaifu-cho, Hirosaki-shi, Aomori-ken, 036-8562, Japan	0172-33-5111 (Main Switchboard)
University Hospital		53, Hon-cho, Hirosaki-shi, Aomori-ken, 036-8563, Japan	
Dormitory for Nurses (Dormitory for Residents)		26, Sagara-cho, Hirosaki-shi, Aomori-ken, 036-8211, Japan	
Graduate School of Health Sciences Institute of Radiation Emergency Medicine		66-1, Hon-cho, Hirosaki-shi, Aomori-ken, 036-8564, Japan	0172-39-5401
Medical Communications Center		40-1, Hon-cho, Hirosaki-shi, Aomori-ken, 036-8203, Japan	0172-39-5240
Kindergarten	1-1, Gakuen-cho, Hirosaki-shi, Aomori-ken, 036-8152, Japan		0172-32-6815
Elementary School			0172-32-7202
Junior High School			0172-32-7201
School for Special Needs Education	1-76, Tomino-cho, Hirosaki-shi, Aomori-ken, 036-8174, Japan		0172-36-5011
Hokuo-Ryo Dormitory (male) Ho-Ryo Dormitory (female)	1-1, Gakuen-cho, Hirosaki-shi, Aomori-ken, 036-8152, Japan		0172-32-2910
Cold Regions Meteorology Laboratory	101-1, Ohkawazoe, Kawaratai, Nishimeya-mura, Nakatsugaru-gun, Aomori-ken, 036-1424, Japan		0172-36-2111 (Main Switchboard)
Fujisaki Farm	7-1, Shitabukuro, Fujisaki, Fujisaki-Machi, Minamitsugaru-gun, Aomori-ken, 038-3802, Japan		0172-75-3026
Kanagi Farm	84, Ashino, Kanagi-cho, Goshogawara-shi, Aomori-ken, 037-0202, Japan		0173-53-2029
Fukaura Laboratory	173, Azumasawa, Fukaura-machi, Nishitsugaru-gun, Aomori-ken, 038-2300, Japan		0173-74-3887
North Japan Research Institute for Sustainable Energy	2-1-3, Matsubara, Aomori-shi, Aomori-ken, 030-0813, Japan		017-735-3363
The Shirakami Institute for Environmental Sciences	101-1, Ohkawazoe, Kawaratai, Nishimeya-mura, Nakatsugaru-gun, Aomori-ken, 036-1424, Japan		0172-39-3915 (Student Academic Affairs Department, Research Promotion Division)
Research Institute of Food Science	2-1-1, Yanagawa, Aomori-shi, Aomori-ken, 038-0012, Japan		017-763-5028
Guest House “Bunkyo-So”	3-8, Kamisuki-machi, Hirosaki-shi, Aomori-ken, 036-8221, Japan		0172-32-0715
Fukaura Seminar House	338-229, Okazaki, Fukaura, Fukaura-machi, Nishitsugaru-gun, Aomori-ken, 038-2300, Japan		0173-74-3085
Hachinohe Satellite	Hachinohe Chamber of Commerce Building, F1, 2-3, Horibata-cho, Hachinohe-shi, Aomori-ken, 031-8511, Japan		0178-43-1600
Aomori Satellite Lecture Room	2-1-3, Matsubara, Aomori-shi, Aomori-ken, 030-0813, Japan		0172-39-3108 (Student Academic Affairs Department, Student Affairs Division)
Tokyo Information Office	1-18-6 Cross Office Uchisaiwaicho, F7, Room 703, Nishishinbashi, Minato-ku, Tokyo-to, 105-0003, Japan		03-3519-5060

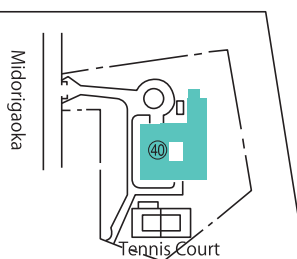
Districts	Divisions	Land Area (m <sup>2</sup> )	Total Area of Building's Floors (m <sup>2</sup> )
Bunkyo-cho Campus	Administration Bureau	135,267	2,349
	Hirosaki Higher School Foreign Lecturer Residence		123
	Health Administration Center		477
	50th Anniversary Auditorium		1,515
	Telephone Operators' Office, Garage, etc		872
	Faculty of Humanities		6,089
	Faculty of Education		16,926
	Center for Educational Research and Practice		541
	General Education Building		11,927
	University Library		6,111
	Hostel and Accommodation for Extracurricular Activities		264
	University Center		4,952
	Boiler Room and Fire Extinguishers		923
	Gymnasium No.1 and No.2		3,394
	Kyudo Hall		140
	Faculty of Agriculture and Life Science		13,200
	Collaboration Center		4,582
	60th Anniversary Auditorium 'Collabo HiroDai'		3,758
	Gene Research Center, Faculty of Agriculture and Life Science		1,527
	Science and Technology Research		22,663
	Science and Technology, Earthquake and Volcano Observatory		268
	Computing and Networking Center		2,351
	Multipurpose Space		-
	Martial Arts Hall		883
	Building for Extracurricular Activities		1,173
	Subtotal	135,267	107,008
Gakuen-cho Campus	Kindergarten Affiliated with the Faculty of Education	176,403	1,065
	Elementary School Affiliated with the Faculty of Education		8,288
	Junior High School Affiliated with the Faculty of Education		8,171
	Student Halls of Residence		6,372
	Sports Facilities		3,077
	Total	176,403	26,973

Districts	Divisions	Land Area (m <sup>2</sup> )	Total Area of Building's Floors (m <sup>2</sup> )
University Medical Center (Hon-cho)	Graduate School of Medicine/Health Sciences	94,511	56,665
	Medical Communication Center		894
	Baseball Field		-
	University Hospital		74,320
	Gymnasium		1,457
	Lodging for Nurse (Lodging for Doctor in Training)		2,350
	Support Facilities for Female Medical Professionals		250
	Subtotal		135,936
	Lodging for Students	9,631	3,288
	School for Special Needs Education	10,617	3,874
Others	School for Special Needs Education Practice Facility	1,603	33
	Farming Practice Facility, Faculty of Education	10,812	47
	Earthquake and Volcano Observatory, Faculty of Science and Technology		
	Iwasaki Earthquake Observation Point	(617)	40
	Minmaya Earthquake Observation Point	(747)	20
	Tomari Earthquake Observation Point	(524)	40
	Bonjusan Volcano Observation Point	(352)	
	Hamayokosawa Volcano Observation Point	(14)	
	Hyakuzawa Volcano Observation point	(180)	45
	Teaching and Research Center for Bio-coexistence, Faculty of Agriculture and Life Science, Kanagi Farm	142,607	2,391
	Teaching and Research center for Bio-coexistence, Faculty of Agriculture and Life Science, Kanagi Farm	358,798	4,806
	Fukaura Laboratory	798	165
	North Japan Research Institute for Sustainable Energy	(1,604)	(2,454)
	The Shirakami Institute for Environmental Sciences	(178,560)	255
	Research Institute of Food Science	(516)	(316)
	Fukaura Seminar House	6,632	159
	University Guest House 'Bunkyo-so'	1,617	581
	International House	3,143	2,030
	Staff Quarters	5,147	9,379
	Ossuary	(30)	8
	Ash storage	(18)	-
	Others	3,676	
	Subtotal	738,243	29,931
Total		1,144,424	299,848

( ) shows leased land



Bunkyo-cho  
Campus



Computer and Communications Systems Center

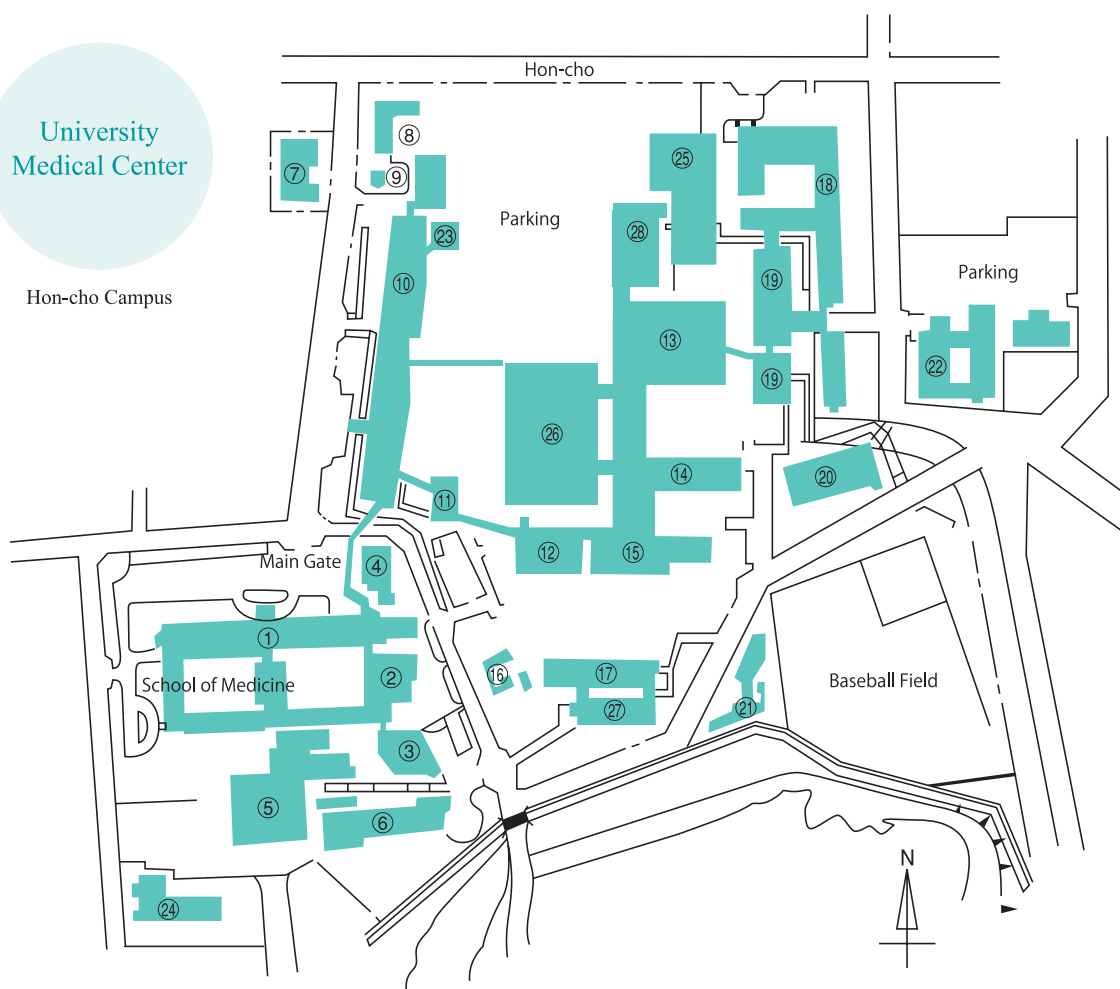


60th Anniversary Auditorium 'Collabo HiroDai' 27

①	Information (Guard Gate)	②①	Kyudo Hall
②	Administration Bureau	②②	Earthquake and Volcano Observatory
③	Hirosaki Higher School Foreign Lecturer Residence	②③	Computing and Networking Center
④	Barn	②④	Center/Faculty of Science and Technology Building No.1
⑤	Telephone Operators' Office	②⑤	Gene Research Center
⑥	Electric Power Room	②⑥	Collaboration Center
⑦	Garage	②⑦	60th Anniversary Auditorium 'Collabo HiroDai'
⑧	Health Administration Center	②⑧	Faculty of Science and Technology Building No.2
⑨	50th Anniversary Auditorium	②⑨	Faculty of Agriculture and Life Science Building
⑩	General Education Building	③⑩	Irrigation Laboratory
⑪	Faculty of Humanities Building	③⑪	Greenhouse
⑫	University Library	③⑫	Farm Field Administration Building
⑬	Commons	③⑬	Field Research Preparation Building
⑭	University Center	③⑭	Administration Building for Animal and Plant Experiments
⑮	Hostel and Accommodation for Extracurricular Activities	③⑮	Greenhouse/Mesh Room/Glass Room
⑯	Faculty of Education Building	③⑯	Gymnasium No.2
⑰	University Museum	③⑰	Martial Arts Hall
⑱	Pump Chamber	③⑱	Athletic Equipment Storage Facility
⑲	Hazardous Chemicals Storage Room	③⑲	Building for Extracurricular Activities
⑳	Center for Education Research and Practice	④⑩	Hokumei-Ryo Dormitory (male)
		④①	International House
		④②	Employee Lodging



60th Anniversary Monument  
Metal Work 'Shiawase no Ring' constructed by MIYATA Ryohei, President  
of Tokyo University of the Arts  
1st Lobby at 60th Anniversary Auditorium 'Collabo HiroDai' 27



① Graduate School of Medicine	⑧ Garage	⑯ Obsolete Liquid Waste Disposal Building	⑳ Support Facilities for Female Medical Professionals
② Hiroaki University Medical Branch Library	⑨ Pump Chamber	⑰ General Administration Building	㉑ Shared Use Institution, Hon-cho Campus
③ Foundation Lecture Building	⑩ Clinical Research Building	⑱ Graduate School of Health Sciences	㉒ Center for Advanced Medical Research
④ Extracurricular Activities Equipment Storage	⑪ Clinical Lecture Building	㉒ Multidiscipline Medicine Building	㉓ Parking Structure
⑤ Extracurricular Activity Equipment Storage Area	⑫ Energy Center	㉓ Institute of Radiation Emergency Medicine	㉔ Ambulatory Practice Building
⑥ Radioisotope Laboratory	⑬ Central Examination Building	㉔ Gymnasium	㉕ Hirodai Nursery
⑦ Institute of Brain Science	⑭ Hospital Ward No.2	㉕ Hall of School of Medicine	㉖ Emergency and Disaster Medical Center
⑧ Medical Communications Center	⑮ Hospital Ward No.1	㉖ Lodging for Nurses	



Emergency and Disaster Medical Center ㉖



University Hospital Ward No.1 and No.2 ⑭ ⑮



Medical Communications Center ⑦



Hirodai Nursery ㉗



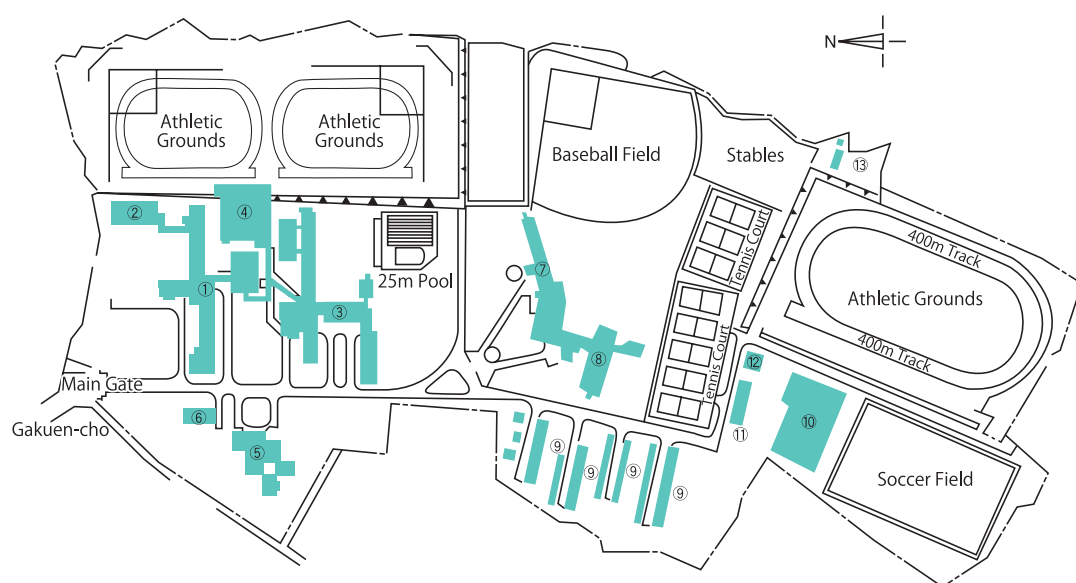
Gakuen-cho  
Campus



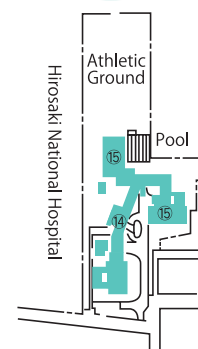
Elementary School ③



Junior High School ①



Tomino-cho  
Campus



① Junior High School Building	⑤ Kindergarten Building	⑨ Employee lodging	⑬ Stables
② Junior High School Martial Arts Hall	⑥ Boiler Room	⑩ Indoor pool	⑭ School for Special Needs Education Building
③ Elementary School Building	⑦ Ho-Ryo Dormitory (female)	⑪ Gymnasium Management Facilities	⑮ School for Special Needs Indoor Gymnasium
④ Gymnasium for Elementary School and Junior High School	⑧ Hoku-Ryo Dormitory (male)	⑫ Hostel	



Kindergarten ⑤

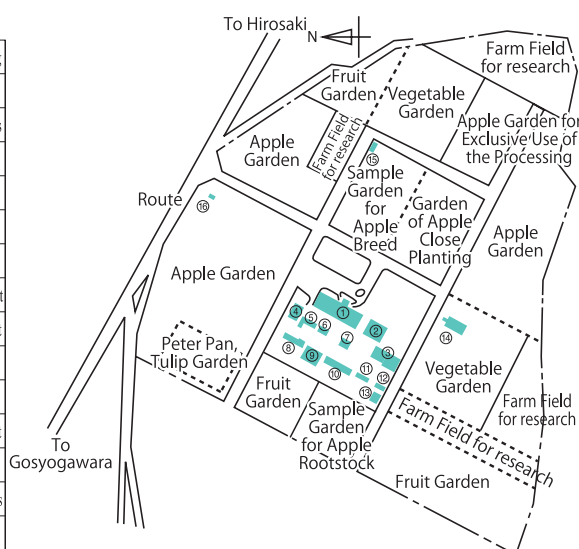


Special Needs Education Building ⑭

Teaching and Research Center for Bio-coexistence, Faculty of Agriculture and Life Science  
Fujisaki Farm/Kanagi Farm

### Fujisaki Farm

①	Administration Building
②	Processing Barn
③	Low-Temperature Warehouse for Apples
④	Material Storage
⑤	Greenhouse
⑥	Oil Storage
⑦	Pesticide Storage
⑧	Small Barn for Farming Equipment
⑨	Large Barn for Farming Equipment
⑩	Extra Storage
⑪	Barn
⑫	Storage of Student Farming Equipment
⑬	Fertilizer Storage
⑭	Fruit Tree and Root Experiment Facilities
⑮	Shed
⑯	Pump Room



Administration Building, Fujisaki Farm ①



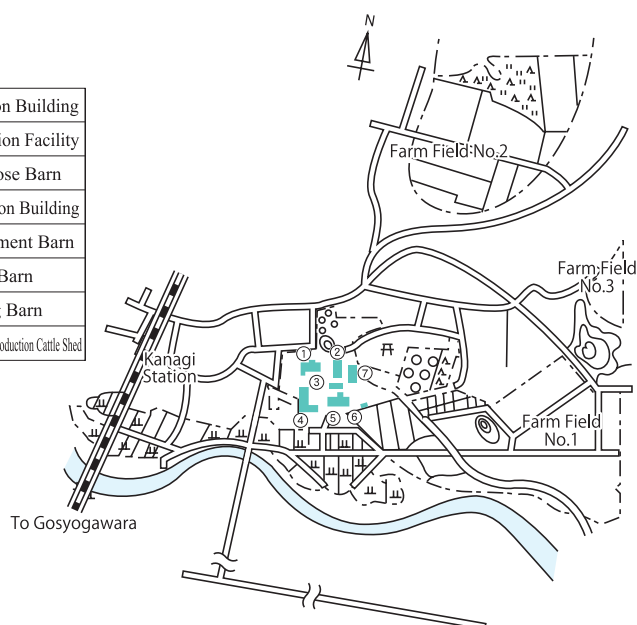
Peter Pan, Tulip Garden



Cattle Barn ⑤

### Kanagi Farm

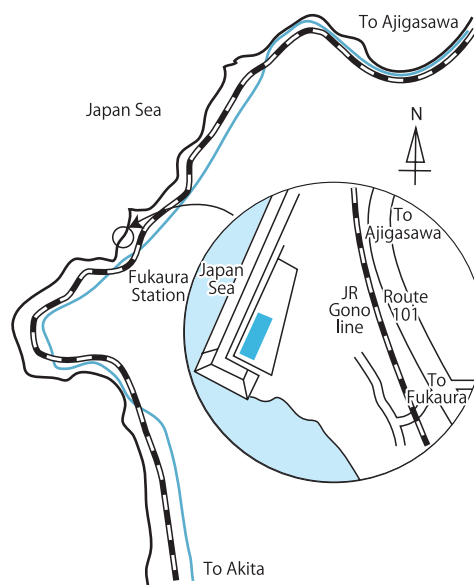
①	Administration Building
②	Accommodation Facility
③	Multipurpose Barn
④	Accommodation Building
⑤	Farm Equipment Barn
⑥	Cattle Barn
⑦	Farming Barn
⑧	Special "Apple Beef" Production Cattle Shed



### Fukaura Laboratory



Fukaura Laboratory



## Sports Facilities

As of May 1, 2015

Divisions		Location	Structure Floors	Area(㎡)	Other Information
Indoor	Gymnasium	Bunkyo-cho	S <sub>1</sub> ,R <sub>2</sub>	3,394	Gymnasium No.1 Gymnasium No.2
	Gymnasium	Hon-cho	RS <sub>2</sub>	1,457	
	Kyudo Hall	Bunkyo-cho	W <sub>1</sub>	140	a dojo for practicing the Japanese arts of judo, kendo (Japanese fencing), aikido and karate  50m (9 courses)
	Martial Arts Hall	Bunkyo-cho	R <sub>1</sub>	756	
	Swimming Pool	Gakuen-cho	S <sub>1</sub>	2,398	
	Subtotal			8,145	
Outdoor	Multipurpose Open Space	Bunkyo-cho		12,144	a practice space for soccer, rugby, American football, softball and so forth
	Baseball Field	Nanto-cho		9,981	track and field space (400 meter track), soccer field, archery area, hippodrome, horse stables, baseball field and 8 tennis courts
	Athletic Grounds	Gakuen-cho		61,484	
	Subtotal			83,609	
Total				91,754	

## Dormitories

As of May 1, 2015

Dormitories	Structure/Floors	Area(㎡)	Year	Capacity	
				Limit	Residents
Hokumei-Ryo (Male)	R <sub>4</sub>	3,281	40	230	151
Ho-Ryo (Female)	R <sub>5</sub>	3,498	42	238	179
Hokuo-Ryo (Male)	R <sub>5</sub>	2,874	43	200	45
Total				668	375



▲Dormitory (Ho-Ryo)



▲ International House

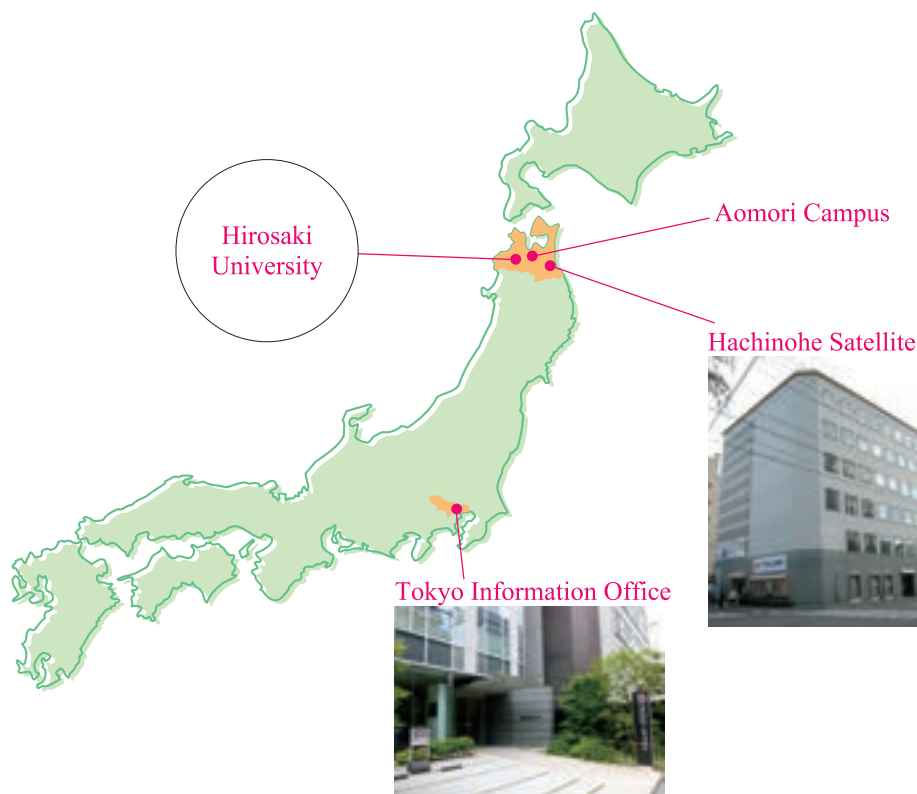
## International House

As of May 1, 2015

Divisions	Structure/Floors	Area(㎡)	Characteristics of the Facility
A Building	R <sub>4</sub>	982	Single Rooms: 31 Common Areas: Office, Lounge, Laundry Room
B Building	R <sub>3</sub>	1,048	Apartments for Married Couples: 11 Apartments for Families: 7
Total			2,030

## Satellite

Hirosaki University has three Satellite offices and one lecture room. These aim to foster an intimate relationship between the university and the local community. Hirosaki University conducts and promotes joint industry-university research projects, lifelong study projects, information activities, and other activities related to education & research. The main activities include: 1. Joint industry-university research projects (scientific technique advice, joint research, etc.) 2. Matching of the local industry's needs and the Hirosaki University needs 3. Public seminars, lectures, remote education, etc. 4. Information & PR activities (entrance examinations, employment and placement information, university information, etc.).



## Regional affiliations with municipalities

Hirosaki University has a strong policy of collaboration and therefore enjoys a number of fruitful collaborative relationships with societies, organizations and local communities based on this policy. Various projects such as collaborative research of lifelong study and industry-university-government cooperation have sprung forth from these partnerships.

- Ajigasawa Town, Nishi-Tsugaru County, Aomori Prefecture Oct. 6, 2005
- Edogawa City, Edogawa City Farmer's Club, Edogawa Flower Union Apr. 21, 2006
- Hirosaki City, Aomori Prefecture Sep. 19, 2006
- Aomori Prefecture Nov. 25, 2006
- Aomori Bank Apr. 25, 2007
- Aomori City, Aomori Prefecture May. 7, 2007
- Michinoku Bank Jun. 25, 2007
- Sunstar Inc Aug. 7, 2007
- National Institute of Radiological Sciences Oct. 2, 2008
- Nishimeya Village, Naka-Tsugaru County, Aomori Prefecture Dec. 22, 2008
- Aomori Prefectural Industrial Technology Research Center Sep. 28, 2009
- Namie Town, Fukushima Prefecture Sep. 29, 2011
- Hirosaki Chamber of Commerce and Industry Dec. 6, 2012
- Aomori Chamber of Commerce and Industry Jul. 2, 2013
- Aomori Prefectural Education Committee (February 24, 2015)
- Fukaura Town, Nishi-Tsugaru County, Aomori Prefecture (May 15, 2015)

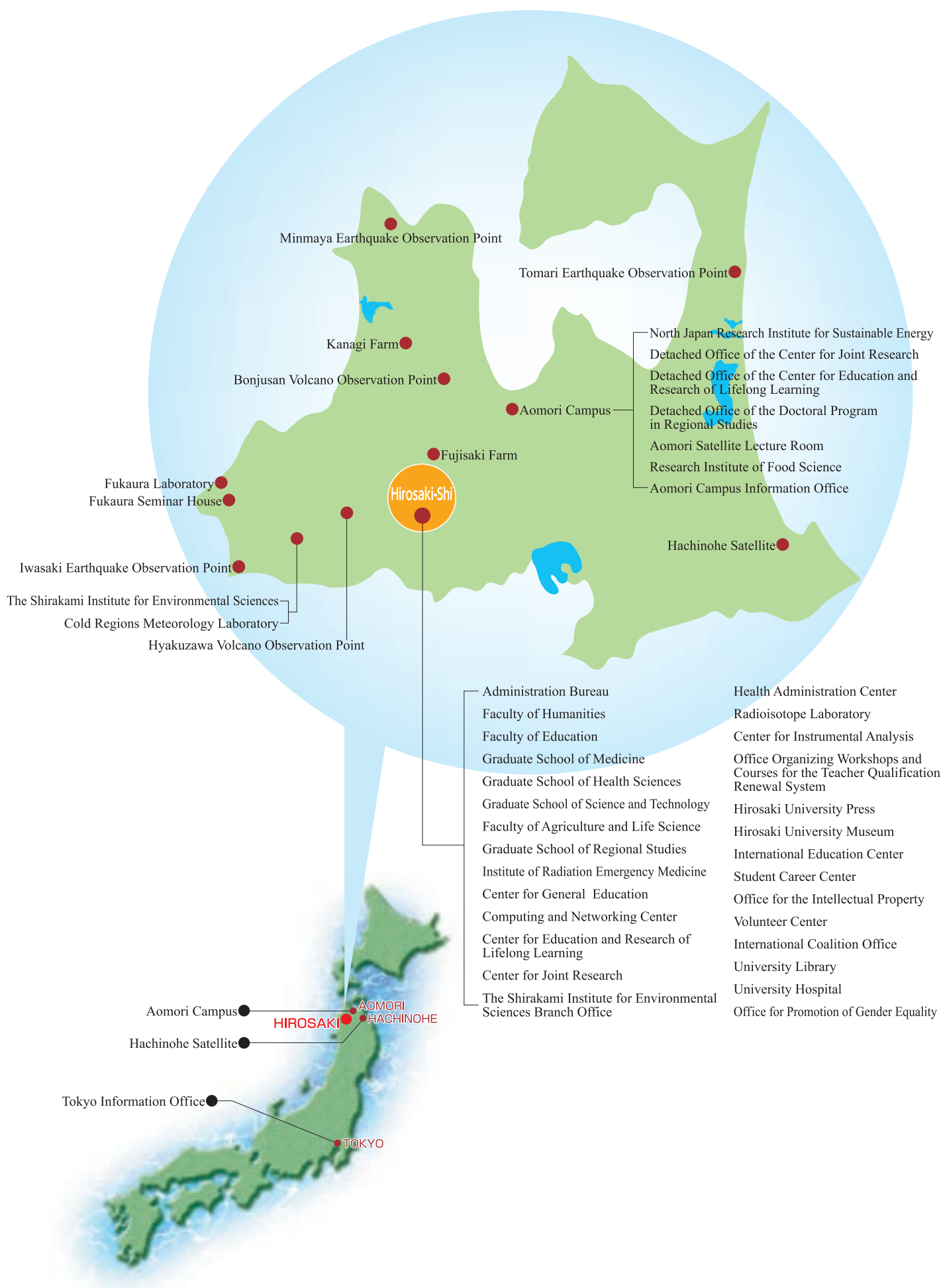


Fukaura Town, Nishi-Tsugaru County, Aomori Prefecture (May 15, 2015)





①	Administration Bureau	②	Faculty of Science and Technology	⑤	Hokumei-Ryo Dormitory (male)
	Faculty of Humanities		Earthquake and Volcano Observatory		⑥ International House
	Faculty of Education		Earthquake Observatory Point (Minmaya, Iwasaki, Tomari)		⑦ Guest House "Bunkyo-so"
	Center for Educational Research and Practice		Volcano Observatory (Hyakuzawa, Hamayokosawa, Bonjusan)		⑧ Graduate School of Medicine
	Center for General Education		Faculty of Agriculture and Life Science		Institute for Experimental Animals
	Health Administration Center		Gene Research Center		Institute of Brain Science
	Office Organizing Workshops and Courses for the Teacher Qualification Renewal System		Computing and Networking Center		Radioisotope Laboratory
	University Press		Center for Education and Research of Lifelong Learning		⑨ Medical Communications Center
	University Museum		Center for Joint Research		⑩ University Hospital
	International Education Center		Center for Instrumental Analysis		⑪ Graduate School of Health Sciences
	Student Career Center		Office for the Intellectual Property		⑫ Institute of Radiation Emergency Medicine
	Volunteer Center		60th Anniversary Auditorium 'Collabo HiroDai'		
	International Coalition Office	③	School for Special Needs Education		
	University Library		Elementary School		
	General Education Building	④	Junior High School		
	50th Anniversary Auditorium		Kindergarten		
	Hiroshima Higher School Foreign Lecturer Residence		Hokuo-Ryo Dormitory (male)		
	Office for Promotion of Gender Equality		Ho-Ryo Dormitory (female)		





HIROSAKI  
UNIVERSITY

■ Concept

**Hirosaki University Logo**

■ Established July 24, 2006

The university's logo takes cherry blossoms, for which Hirosaki City has great pride, as its motif. Blossoms representing each of the school's five faculties are gathered together into one large blooming flower, facing the future. The circle in the center of the logo stands for the Earth, and expresses how graduates of Hirosaki University will make outstanding contributions to business and research, helping to make the world go round. In addition, the five different colors represent the different faculties: red for Medicine, orange for Education, green for Agriculture & Life Sciences, blue for Science & Technology, and purple for Humanities. The image of the flowers scattered around the Earth like satellites also carries the meaning of Hirosaki University becoming a beacon for the region. Taken as a whole, the logo was designed to have a colorful, modern feel, brimming with freshness, vigor, and the energy of an enjoyable campus life.