



2016 Overview

HIROSAKI UNIVERSITY





President SATO Kei

Hirosaki University: “Communicating to the world; creating with our community”

Ideals and Principles

Hirosaki University has, in the spirit of the Fundamental Law of Education, established the following institutional goals: 1) to incorporate extensive bodies of knowledge into our campus culture; 2) to engage in the teaching of and research in a broad range of specialized scholarly fields; 3) to educate persons of character and integrity who can contribute to human culture.

Fundamental Goals: The Hirosaki University Vision of the Future

Hirosaki University, in its role as one of the comprehensive public universities in the north of Japan, has set as its foundation a commitment to serve as a core actor for regional revitalization. Taking this commitment into consideration, we established four strategic areas of concentration, renewable energy, the environment, radiation emergency medicine, and food, positioning them as objectives in the second medium-term plan. We have subsequently integrated these strategic and related themes into our research and educational programs. We have also made great headway in establishing ties with local organizations and governmental bodies. Moreover, as we enter the third round of medium-term objectives, we will continue to contribute to local society through human resource development and the fostering of innovation. Hirosaki University has recently implemented a university-wide reorganization. We have 1) strengthened human resource development programs in the fields of science, technology and agriculture that contribute to innovation, 2) made qualitative improvements in the teacher training program for elementary school teachers, and 3) built up both the educational and research arms of the graduate schools. Moreover, among our third medium-term objectives, we will continually review the themes and reevaluate and reform the system by which research is implemented in the original four core areas of concentration. Furthermore, although we have independently implemented university governance reforms through wide-ranging on-campus discussion and debate, we must continue to verify and reexamine these outcomes. We must do so in order to enhance the functioning of and to implement the reforms instituted under the management system that was introduced after the establishment of the national university corporation system. Ultimately, our mission is to live up to our slogan of “communicating to the world; creating with our community”

Education・Research Organization

With the successful completion of the above-mentioned reorganization of the educational and research system, we must now turn to meet the challenges of globalization, low birthrates and an aging society as well as the need for innovation creation, challenges not only to Hirosaki University and the surrounding region, but to the nation as a whole. Moreover, in the face of recent scientific and technological advances, there has been a shift towards an emphasis on post-graduate education, which has inevitably come to serve as the linchpin of higher education. We are therefore reexamining our postgraduate educational and research programs, while remaining conscious of the continuity that must exist between undergraduate and postgraduate study.

Educational Reform

Hirosaki University, in its role as a core actor in the regional revitalization process, has a major responsibility to train future local leaders who can address and resolve regional issues from a truly global perspective. However, in order to take advantage of the specialized knowledge and technological know-how of our faculty and other researchers, we must first cultivate the basic knowledge and cultural understanding that serve as the foundation of advanced study. In this sense, the role of liberal arts education in the formation of harmonious human relations is critical. Moreover, in order to best navigate the educational revolution we find ourselves a part of, we must reinforce our educational infrastructure, make improvements in the way we select students for admission, tighten performance evaluation, strengthen active learning programs, promote learning that is designed by students themselves, and strengthen the student support system.

Promotion of Research

We consider the promotion of basic research, research that is recognized internationally as well as research that contributes to regional revitalization to be essential elements of our mission as a university. With this in mind, we offer support to young researchers, promote international research exchange, and encourage the securing of competitive research funds and the creation and utilization of intellectual property. In addition, we will continue to promote research in the areas we have designated as strategic areas of concentration: renewable energy, the environment, radiation emergency medicine, and food.

Regional Cooperation and Regional Contribution

To fulfill our role as a core actor in the regional revitalization process, we will continue to strengthen our ties with local governments, companies and citizens groups. With respect to education, we are incorporating regional issues into our curriculum through active-learning and other pedagogical approaches that encourage students to think about and offer solutions to local and regional issues. As far as research is concerned, we are contributing to innovation creation through joint research projects with the local community. In addition, we are cooperating with other institutions of higher learning in the region, and are actively involved in joint educational and research activities that contribute to regional revitalization.

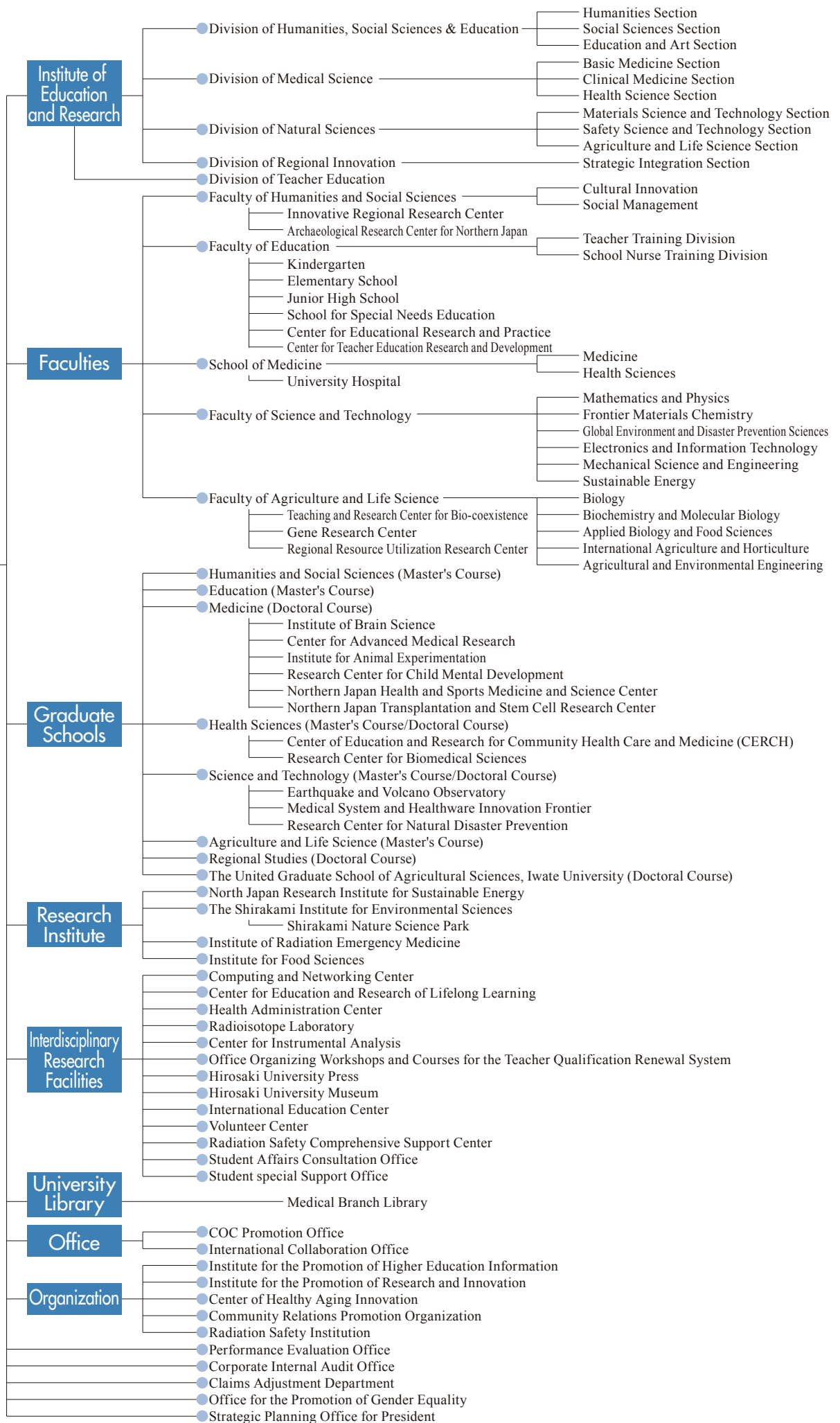
Globalization

International academic exchange and the fostering of a global perspective has become an important issue for local communities as well as for the nation as a whole. Therefore, we here at Hirosaki University recognize the need to accelerate our own globalization. In addition to the general strengthening of education and research programs, we are working to enhance the internationalization and diversity of our campus as well as to offer support to students who wish to gain overseas experience.

Management

In order to resolve outstanding issues and realize our institutional goals, we will continue to seek university-wide consensus under the leadership of the president. Moreover, given the challenges facing national university corporations throughout the country, we must continue to constantly review and reevaluate our management practices and foster a common awareness and sense of unity amongst the members of our university community.

Hirosaki University



The sigh(☺)is a specific project education research center.

President, Executive Director, Auditor

President		Executive Director and Vice President		Auditor		Assistant to the President		Vice Executive Director		Subtotal		Total
M	F	M	F	M	F	M	F	M	F	M	F	
1	—	6	1	1	1(1)	6(4)	1	4(2)	—	18(6)	3(1)	21(7)

Note: Part-time positions are shown in parenthesis and are included in the total number.

Note: For Vice Presidents, Assistants to the President, and Vice Executive Directors, numbers include cases where one person holds more than one position.

Divisions	Professors		Associate Professors		Lecturers		Assistant Professors		Research Associates		Teachers of Attached School		Subtotal		Other Staff		Total		Statistics
	M	F	M	F	M	F	M	F	M	F	M	F	M	F	M	F	M	F	
Total Number of Present Employees	188	24	167	29	84	26	145	44	41	22	45	53	670	198	356	706	1,026	904	1,930
Administration Bureau	—	—	—	—	—	—	—	—	—	—	—	—	—	—	120	52	120	52	172
Faculty of Humanities and Social Sciences	24	7	23	6	10	3	—	—	—	—	—	—	57	16	2	6	59	22	81
Faculty of Education	32	8	20	3	13	4	—	—	—	1	45	53	110	69	11	4	121	73	194
Graduate School of Medicine	36	—	31	1	17	2	57	15	11	6	—	—	152	24	15	6	167	30	197
Graduate School of Health Sciences	18	9	7	7	13	7	11	10	2	4	—	—	51	37	5	3	56	40	96
University Hospital	—	—	10	1	26	6	42	13	27	11	—	—	105	31	154	611	259	642	901
Graduate School of Science and Technology	38	—	37	3	3	—	13	1	1	—	—	—	92	4	17	6	109	10	119
Faculty of Agriculture and Life Science	24	—	26	4	—	—	13	1	—	—	—	—	63	5	18	5	81	10	91
Graduate School of Regional Studies	1	—	2	—	—	—	—	—	—	—	—	—	3	—	—	—	3	—	3
North Japan Research Institute for Sustainable Energy	6	—	2	—	—	—	—	—	—	—	—	—	8	—	—	—	8	—	8
The Shirakami Institute for Environmental Sciences	1	—	1	—	—	—	1	—	—	—	—	—	3	—	—	—	3	—	3
Institute of Radiation Emergency Medicine	3	—	—	—	—	—	3	—	—	—	—	—	6	—	3	—	9	—	9
Institute for Food Sciences	1	—	2	—	—	—	—	1	—	—	—	—	3	1	—	—	3	1	4
Computing and Networking Center	—	—	1	—	—	—	—	—	—	—	—	—	1	—	—	—	1	—	1
Center for Education and Research of Lifelong Learning	—	—	1	—	1	—	—	—	—	—	—	—	2	—	—	—	2	—	2
Health Administration Center	1	—	—	1	—	1	—	—	—	—	—	—	1	2	—	2	1	4	5
Radioisotope Laboratory	—	—	—	—	—	—	—	—	—	—	—	—	—	—	—	1	—	1	1
International Education Center	—	—	2	2	—	—	—	1	—	—	—	—	2	3	—	—	2	3	5
University Library	—	—	—	—	—	—	—	—	—	—	—	—	—	—	7	10	7	10	17
Institute for the Promotion of Higher Education Information	1	—	1	1	1	2	2	—	—	—	—	—	5	3	—	—	5	3	8
Institute for the Promotion of Research and Innovation	1	—	—	—	—	—	—	—	—	—	—	—	1	—	—	—	1	—	1
Center of Healthy Aging Innovation	1	—	1	—	—	1	1	1	—	—	—	—	3	2	—	—	3	2	5
Aomori Campus	—	—	—	—	—	—	—	—	—	—	—	—	—	—	4	—	4	—	4
COC Promotion office	—	—	—	—	—	—	2	—	—	—	—	—	2	—	—	—	2	—	2
Office for the Promotion of Gender Equality	—	—	—	—	—	—	—	1	—	—	—	—	—	1	—	—	—	1	1

Note: Numbers for staff working in the Corporate Internal Audit Office and Strategic Planning Office for President and COC Promotion office are included in the numbers for the Administration Bureau.

Undergraduates

As of May 1,2016

Faculties	Departments and Courses	Annual Admission Capacity	Second year Transfer Student	Third year Transfer Student	Enrollment Capacity	Actual Enrollment													
						Freshmen		Sophomores		Juniors		Seniors		5th year		6th year		Total	
						M	F	M	F	M	F	M	F	M	F	M	F		
Humanities and Social Sciences	Cultural Innovation	110	—	—	110	50	64	—	—	—	—	—	—	—	—	—	—	—	114
	Social Management	155	—	—	155	95	68	—	—	—	—	—	—	—	—	—	—	—	163
	Subtotal	265	—	—	265	145	132	—	—	—	—	—	—	—	—	—	—	—	277
Humanities	Humanities and Cultural Studies	—	—	—	345	—	—	51	65	42	67	54	75	—	—	—	—	—	354
	Social Science and Social System Studies	—	—	—	330	—	—	53	64	50	62	75	64	—	—	—	—	—	368
	Economics and Commercial Sciences	—	—	—	360	—	—	93	34	84	41	105	40	—	—	—	—	—	397
	Subtotal	—	—	—	1,035	—	—	197	163	176	170	234	179	—	—	—	—	—	1,119
Education	Teacher Training Division	150	—	—	585	81	74	73	68	67	78	84	87	—	—	—	—	—	612
	School Nurse Training Division	20	—	—	95	—	21	—	26	—	24	1	26	—	—	—	—	—	98
	Community Education Training Division	—	—	—	210	—	—	30	48	32	42	42	48	—	—	—	—	—	242
	Subtotal	170	—	—	890	81	95	103	142	99	144	127	161	—	—	—	—	—	952
Medicine	Medicine	112	20	—	753	82	51	89	44	88	44	79	42	87	50	87	34	777	
	Health Sciences	200	—	30	860	65	138	67	133	67	142	79	135	—	—	—	—	—	826
	Subtotal	312	20	30	1,613	147	189	156	177	155	186	158	177	87	50	87	34	1,603	
Science and Technology	Mathematics and Physics	78	—	—	78	66	14	—	—	—	—	—	—	—	—	—	—	—	80
	Frontier Materials Chemistry	52	—	—	190	41	11	40	8	33	12	46	9	—	—	—	—	—	200
	Global Environment and Disaster Prevention Sciences	65	—	—	65	50	16	—	—	—	—	—	—	—	—	—	—	—	66
	Electronics and Information Technology	55	—	—	229	50	6	53	5	55	3	66	4	—	—	—	—	—	242
	Mechanical Science and Engineering	80	—	—	80	77	4	—	—	—	—	—	—	—	—	—	—	—	81
	Sustainable Energy	30	—	—	30	24	8	—	—	—	—	—	—	—	—	—	—	—	32
	Mathematical Sciences	—	—	—	120	—	—	38	1	34	6	41	6	—	—	—	—	—	126
	Advanced Physics	—	—	—	120	—	—	37	3	36	3	38	6	—	—	—	—	—	123
	Earth and Environmental Sciences	—	—	—	174	—	—	34	24	39	18	47	18	—	—	—	—	—	180
	Intelligent Machines and System Engineering	—	—	—	174	—	—	51	6	50	8	57	5	—	—	—	—	—	177
	Common Faculty	—	—	10	20	—	—	—	—	4	—	3	1	—	—	—	—	—	8
Subtotal	360	—	10	1,280	308	59	253	47	251	50	298	49	—	—	—	—	—	1,315	
Agriculture and Life Science	Biology	40	—	—	160	31	9	28	16	22	19	24	23	—	—	—	—	—	172
	Biochemistry and Molecular Biology	40	—	—	160	19	21	24	16	23	18	35	21	—	—	—	—	—	177
	Applied Biology and Food Sciences	55	—	—	55	28	27	—	—	—	—	—	—	—	—	—	—	—	55
	International Agriculture and Horticulture	50	—	—	50	21	29	—	—	—	—	—	—	—	—	—	—	—	50
	Agricultural and Environmental Engineering	30	—	—	120	25	5	18	10	22	8	28	6	—	—	—	—	—	122
	Applied Bioscience	—	—	—	105	—	—	22	13	22	13	24	14	—	—	—	—	—	108
	Agriculture and Horticulture	—	—	—	120	—	—	21	18	22	19	35	15	—	—	—	—	—	130
	Subtotal	215	—	—	770	124	91	113	73	111	77	146	79	—	—	—	—	—	814
Total	1,322	20	40	5,853	805	566	822	602	792	627	963	645	87	50	87	34	6,080		

Graduate Schools

As of May 1, 2016

Divisions		Annual Admission Capacity	Enrollment Capacity	Actual Enrollment								Total
				Freshmen		Sophomores		Juniors		Seniors		
				M	F	M	F	M	F	M	F	
Graduate Schools	Humanities and Social Sciences (Master's Course)	16	32	3	5	15	19	—	—	—	—	42
	Education (Master's Course)	32	64	16	18	17	24	—	—	—	—	75
	Medicine (Doctoral Course)	60	210	49	18	32	15	29	15	44	27	229
	Health Sciences (Master's Course)	30	55	26	10	23	18	—	—	—	—	77
	Health Sciences (Doctoral Course)	12	30	5	7	8	2	7	13	—	—	42
	Science and Technology (Master's Course)	120	210	100	15	87	13	—	—	—	—	215
	Science and Technology (Doctoral Course)	12	28	8	1	6	3	11	3	—	—	32
	Agriculture and Life Science (Master's Course)	60	120	24	14	22	13	—	—	—	—	73
	Regional Studies (Doctoral Course)	6	18	6	1	8	2	14	5	—	—	36
Subtotal		348	767	237	89	218	109	61	36	44	27	821
The United Graduate School of Agricultural Sciences, Iwate University (Doctoral Course) Note: The current figure indicates the number of students who belong to Hirosaki University (supervising educators)		32	96	6	3	7	1	12	1	—	—	30
Total		380	863	243	92	225	110	73	37	44	27	851

Attached School (Faculty of Education)

As of May 1, 2016

Divisions	Enrollment Capacity	Classes	Actual Enrollment							Total
			1st Year	2nd Year	3rd Year	4th Year	5th Year	6th Year		
Kindergarten	90	4	3years 25	4years 24	5years 29	—	—	—	78	
Elementary School	663	21	102	91	82	102	87	90	554	
Junior High School	530	15	162	163	195	—	—	—	520	
School for Special Needs Education			Lower		Middle		Higher			
(Elementary)	18	3	5		6		4		15	
(Junior High)	18	3	6	6	6	—	—	—	18	
(Senior High)	24	3	8	8	8	—	—	—	24	
Total	1,343									1,209

University-wide Agreements

As of May 1,2016

University	Country	Date of Agreement
University of Tennessee at Martin	U.S.A.	Jul. 8, 1980
University Bordeaux Montaigne	French Republic	Jan. 31, 1994
Harbin Normal University	People's Republic of China	Aug. 1, 1995
Far Eastern State Medical University	Russian Federation	Dec. 14, 1995
University of Maine	U.S.A.	Jun. 26, 1997
Hyperion University	Romania	Sep. 11, 1998
University of Trier	Federal Republic of Germany	May. 3, 1999
Yanbian University	People's Republic of China	Aug. 28, 2000
M. V. Lomonosov Moscow State University	Russian Federation	Sep. 20, 2000
University of Otago	New Zealand	Sep. 20, 2000
Zhengzhou University	People's Republic of China	Oct. 12, 2000
Chiang Mai University	Kingdom of Thailand	Nov. 2, 2000
University of Debrecen	Republic of Hungary	Dec. 22, 2000
San Diego State University	U.S.A.	Mar. 19, 2001
Nam Seoul University	Republic of Korea	Jun. 1, 2001
Kyungpook National University	Republic of Korea	Jul. 11, 2001
University of Saskatchewan	Canada	Dec. 7, 2001
Pusan National University	Republic of Korea	Dec. 12, 2001
Auckland University of Technology	New Zealand	Dec. 12, 2001
Irkutsk State University	Russian Federation	Mar. 20, 2002
University of La Frontera	Republic of Chile	Jun. 25, 2002
Kyonggi University	Republic of Korea	Sep. 25, 2002
Mount Royal University	Canada	Jun. 1, 2005
Thompson Rivers University	Canada	Oct. 19, 2006
Khon Kaen University	Kingdom of Thailand	May. 6, 2008
Dalian University of Technology	People's Republic of China	Dec. 28, 2009

Discipline-specific Agreements

As of May 1,2016

Faculty	Affiliate Institution	Country	Date of Agreement
Faculty of Humanities and Social Sciences	Ruralia Institute of the University of Helsinki	Republic of Finland	Sep. 7, 2009
Faculty of Education	University of South Carolina	U.S.A.	Jul. 20, 1994
School of Medicine	University of Tennessee Center for the Health Sciences	U.S.A.	May. 19, 1982
	University of West Indies	Jamaica	Feb. 25, 2002
	China Medical University	People's Republic of China	Oct. 25, 1982
	University of Ljubljana	Republic of Slovenia	Nov. 28, 2014
Graduate School of Health Sciences	Centre for Radiation Protection Research, Stockholm University	Kingdom of Sweden	Mar. 6, 2013
Faculty of Agriculture and Life Science	College of Agriculture and Biotechnology, China Agricultural University	People's Republic of China	Aug. 1, 2005
	Kasetsart University Agriculture Department	Kingdom of Thailand	Mar. 27, 2015
	College of horticulture, Shenyang Agricultural University	People's Republic of China	Nov. 3, 2015
North Japan Research Institute for Sustainable Energy	Thammasat University, Faculty of Science and Technology	Kingdom of Thailand	Mar. 14, 2013
	College of Chemistry and Chemical Engineering, Taiyuan University of Technology	People's Republic of China	Jun. 9, 2013
	Institute of Coal Chemical Engineering, Taiyuan University of Techology	People's Republic of China	Jun. 9, 2013
Institute of Radiation Emergency Medicine	Korea Institute of Radiological and Medical Sciences	Republic of Korea	Jan. 21, 2013
	University of Pannonia, Faculty of Engineering Institute of Radiochemistry and Radioecology	Republic of Hungary	Mar. 18, 2013
	Chulalongkorn University, School of Engineering, Department of Nuclear Engineering	Kingdom of Thailand	Nov. 20, 2013
	Institute for Nuclear Science and Technology, Vietnam Atomic Energy Institute	Socialist Republic of Vietnam	Nov. 22, 2013
	Hengyang Normal University, Faculty of Physics and Information Science	People's Republic of China	Nov. 11, 2014
	Philippines Nuclear Research Institute	Republic of the Philippines	Jun. 30, 2015
University Hospital	Pusan University Hospital Clinical Testing Center	Republic of Korea	Nov. 17, 2012
The Shirakami Institute for Environmental Sciences	Far Eastern Division of the Russian Academy of Sciences, Botanical Garden Institute, Vladivostok	Russian Federation	Feb. 20, 2015

Divisions	Faculties, etc.	Country																Total			
		China	Taiwan	South Korea	Thailand	Malaysia	Indonesia	Vietnam	Mongolia	Myanmar	India	Bangladesh	U.S.A	Canada	France	Hungary	Australia		Algeria	Ghana	
Undergraduates	Private Regular Students	Humanities	12	1	1		3													17	
		Humanities and Social Sciences			1		1														2
		Education	2																		2
		Medicine	1		1					1											3
		Health Sciences	2																		2
		Science and Technology	4			1	1														6
		Agriculture and Life Science	1							1											2
	Private Research Students	Humanities and Social Sciences	2																		2
		Education	1																		1
		Agriculture and Life Science	1																		1
	Private Subject Students and Auditors	Humanities	4			4							2	1	2						13
		Humanities and Social Sciences	5		4	2							4					1			16
		Education	2																		2
		Science and Technology	4																		4
		Agriculture and Life Science															1				1
Foreign Students funded by the Japanese Government (Ministry of Education, Culture, Sports, Science and Technology) Japanese Studies Scholarship Students	Humanities	1								1										2	
Graduates	Foreign Students funded by the Japanese Government (Ministry of Education, Culture, Sports, Science and Technology) Regular Scholarship Students	Medicine													1					1	
		Science and Technology				2	1											4			7
	Private Regular Students	Humanities and Social Sciences	16																1		17
		Education	4																		4
		Medicine	8																		8
		Science and Technology	8	1		1	2	1													13
		Agriculture and Life Science	6							1	1										8
Regional Studies	3																		3		
The United Graduate School of Agricultural Sciences	5					1					1								7		
Total		92	2	7	10	7	3	2	1	1	1	1	6	1	2	2	1	4	1	144	

In order to promote the exchange of knowledge and personnel through the international exchange of overseas universities (including Overseas Partner Institutions), the Overseas Center Office is doing the following work:

1. Work to secure the most elite exchange students
(PR activities for the university, responding to inquiries from prospective study-abroad students)
2. Support activities for students from the university who have gone overseas to study
3. Network building and cooperation with graduates and other students who have had study abroad experience at Hirosaki University
4. Support for exchanging knowledge with educational and research institutions in countries where the university has established a relationship (collecting and offering information, organizing, etc.)
5. Other activities that contribute to the internationalization of Hirosaki University.

(1) Dalian Office (People's Republic of China)

- Date established: July 13, 2012
- Place established: At Dalian University of Technology's Energy Laboratory



(2) Khon Kaen University (Kingdom of Thailand)

- Date established: December 14, 2012
- Place established: At Khon Kaen University's Faculty of Humanities and Social Sciences' Rattapittaya Building



(3) Yanbian Office (People's Republic of China)

- Date established: October 15, 2013
- Place established: Yanbian University International Exchange Office



International Collaboration Office

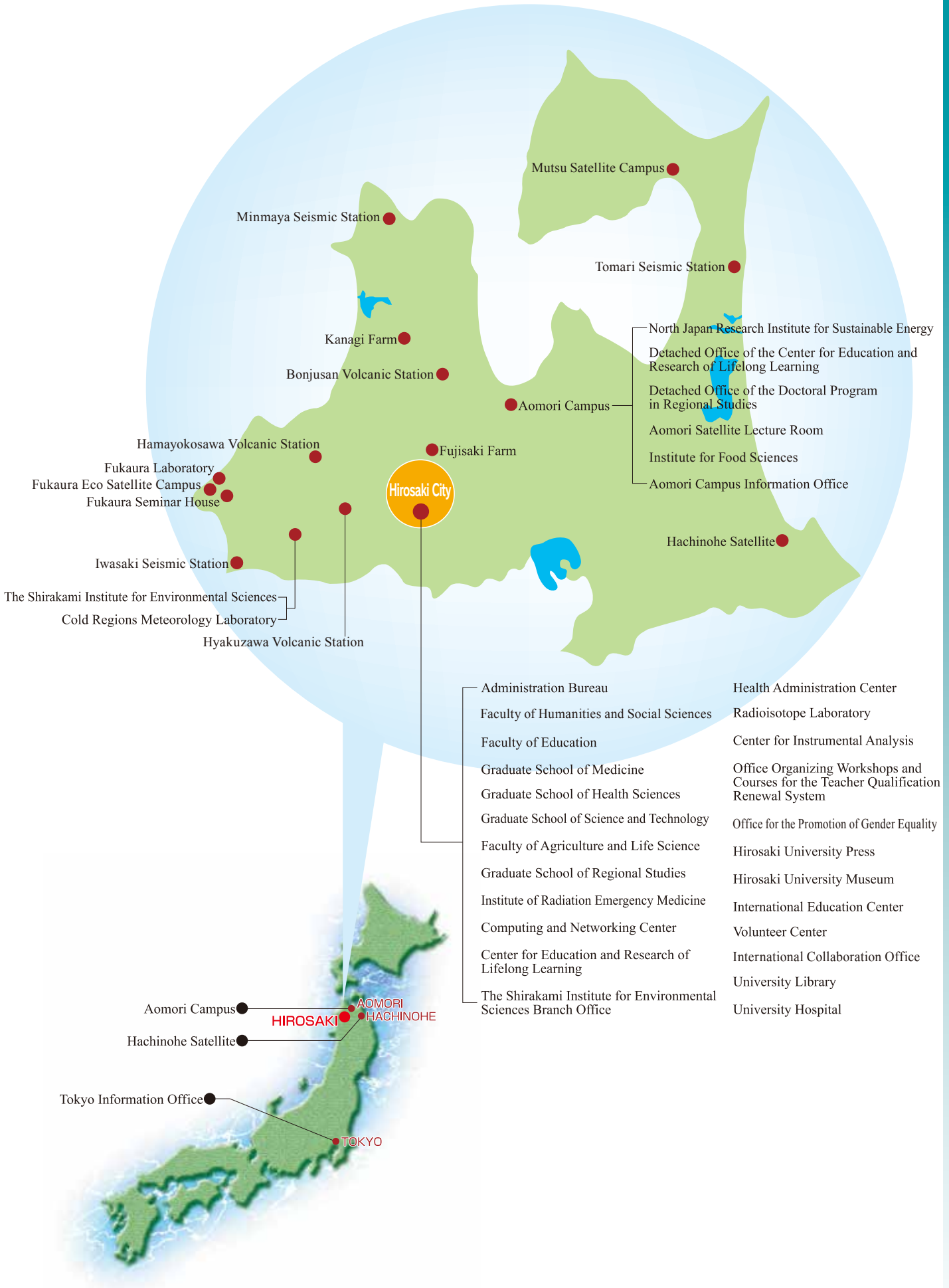
- Founded in April 2013

The International Collaboration Office drafts the plans of the measures to affect globalization promotion of Hirosaki University. Through the interchange with University-wide Agreements, it is intends to contribute to the further globalization of education and research.





①	Administration Bureau	②	Faculty of Science and Technology	⑤	Hokumei-Ryo Dormitory (male • International Student)	
	Faculty of Humanities and Social Sciences		Earthquake and Volcano Observatory		⑥	International House
	Faculty of Education		Faculty of Agriculture and Life Science		⑦	Guest House “Bunkyo-so”
	Center for Educational Research and Practice		Gene Research Center		⑧	Graduate School of Medicine
	Health Administration Center		Computing and Networking Center		⑨	Institute for Animal Experimentation
	Office Organizing Workshops and Courses for the Teacher Qualification Renewal System		Center for Instrumental Analysis		⑩	Institute of Brain Science
	University Press	60th Anniversary Auditorium ‘Collabo HiroDai’	④	Radioisotope Laboratory		
	University Museum	School for Special Needs Education		⑪	Medical Communications Center	
	International Education Center	Elementary School		⑫	University Hospital	
	Volunteer Center	Junior High School			Graduate School of Health Sciences	
	International Collaboration Office	Kindergarten			Institute of Radiation Emergency Medicine	
	University Library	Hokuo-Ryo Dormitory (male)				
	General Education Building	Ho-Ryo Dormitory (female)				
	50th Anniversary Auditorium					
	Hirosaki Higher School Foreign Lecturer Residence					
Office for the Promotion of Gender Equality						
Center for Education and Research of Lifelong Learning						



2016



**HIROSAKI
UNIVERSITY**

Hiroasaki University Logo ■ Established July 24, 2006

Concept

The university's logo takes cherry blossoms, for which Hiroasaki City has great pride, as its motif. Blossoms representing each of the school's five faculties are gathered together into one large blooming flower, facing the future. The circle in the center of the logo stands for the Earth, and expresses how graduates of Hiroasaki University will make outstanding contributions to business and research, helping to make the world go round. In addition, the five different colors represent the different faculties: red for Medicine, orange for Education, green for Agriculture & Life Science, blue for Science & Technology, and purple for Humanities and Social Sciences. The image of the flowers scattered around the Earth like satellites also carries the meaning of Hiroasaki University becoming a beacon for the region. Taken as a whole, the logo was designed to have a colorful, modern feel, brimming with freshness, vigor, and the energy of an enjoyable campus life.

Edited by Public Relations/International Department,
General Affairs Division, Hiroasaki University
1 Bunkyo-cho, Hiroasaki, Aomori-ken, 036-8560, Japan

URL <http://www.hirosaki-u.ac.jp/>