



2019

HIROSAKI UNIVERSITY  
Overview



# IDEALS AND PRINCIPLES • FUNDAMENTAL GOALS

## Ideals and Principles

Hirosaki University has, in the spirit of the Fundamental Law of Education, established the following institutional goals: 1) to incorporate extensive bodies of knowledge into our campus culture; 2) to engage in the teaching of and research in a broad range of specialized scholarly fields; 3) to educate persons of character and integrity who can contribute to human culture.

## Fundamental Goals: The Hirosaki University Vision of the Future

Hirosaki University, in its role as one of the comprehensive public universities in the north of Japan, has set as its foundation a commitment to serve as a core actor for regional revitalization. Taking this commitment into consideration, we established four strategic areas of concentration, renewable energy, the environment, radiation emergency medicine, and food, positioning them as objectives in the second medium-term plan. We have subsequently integrated these strategic and related themes into our research and educational programs. We have also made great headway in establishing ties with local organizations and governmental bodies. Moreover, as we enter the third round of medium-term objectives, we will continue to contribute to local society through human resource development and the fostering of innovation.

Hirosaki University has recently implemented a university-wide reorganization. We have 1) strengthened human resource development programs in the fields of science, technology and

agriculture that contribute to innovation, 2) made qualitative improvements in the teacher training program for elementary school teachers, and 3) built up both the educational and research arms of the graduate schools. Moreover, among our third medium-term objectives, we will continually review the themes and reevaluate and reform the system by which research is implemented in the original four core areas of concentration. Furthermore, although we have independently implemented university governance reforms through wide-ranging on-campus discussion and debate, we must continue to verify and reexamine these outcomes. We must do so in order to enhance the functioning of and to implement the reforms instituted under the management system that was introduced after the establishment of the national university corporation system.

Ultimately, our mission is to live up to our slogan of “communicating to the world; creating with our community”

## Education • Research Organization

With the successful completion of the above-mentioned reorganization of the educational and research system, we must now turn to meet the challenges of globalization, low birthrates and an aging society as well as the need for innovation creation, challenges not only to Hirosaki University and the surrounding region, but to the nation as a whole. Moreover, in the face of recent scientific and technological advances, there has been a shift towards an emphasis on postgraduate education, which has inevitably come to serve as the linchpin of higher education. We are therefore reexamining our postgraduate educational and research programs, while remaining conscious of the continuity that must exist between undergraduate and postgraduate study.

## Educational Reform

Hirosaki University, in its role as a core actor in the regional revitalization process, has a major responsibility to train future local leaders who can address and resolve regional issues from a truly global perspective. However, in order to take advantage of the specialized knowledge and technological know-how of our faculty and other researchers, we must first cultivate the basic knowledge and cultural understanding that serve as the foundation of advanced study. In this sense, the role of liberal arts education in the formation of harmonious human relations is critical. Moreover, in order to best navigate the educational reform we find ourselves a part of, we must reinforce our educational infrastructure, make improvements in the way we select students for admission, tighten performance evaluation, strengthen active learning programs, promote learning that is designed by students themselves, and strengthen the student support system.

## Promotion of Research

We consider the promotion of basic research, research that is recognized internationally as well as research that contributes to regional revitalization to be essential elements of our mission as a university. With this in mind, we offer support to young researchers, promote international research exchange, and encourage the securing of competitive research funds and the creation and utilization of intellectual property. In addition, we will continue to promote research in the areas we have designated as strategic areas of concentration: renewable energy, the environment, radiation emergency medicine, and food.

## Regional Cooperation and Regional Contribution

To fulfill our role as a core actor in the regional revitalization process, we will continue to strengthen our ties with local governments, companies and citizens groups. With respect to education, we are incorporating regional issues into our curriculum through active-learning and other pedagogical approaches that encourage students to think about and offer solutions to local and regional issues. As far as research is concerned, we are contributing to innovation creation through joint research projects with the local community. In addition, we are cooperating with other institutions of higher learning in the region, and are actively involved in joint educational and research activities that contribute to regional revitalization.

## Globalization

International academic exchange and the fostering of a global perspective has become an important issue for local communities as well as for the nation as a whole. Therefore, we here at Hirosaki University recognize the need to accelerate our own globalization. In addition to the general strengthening of education and research programs, we are working to enhance the internationalization and diversity of our campus as well as to offer support to students who wish to gain overseas experience.

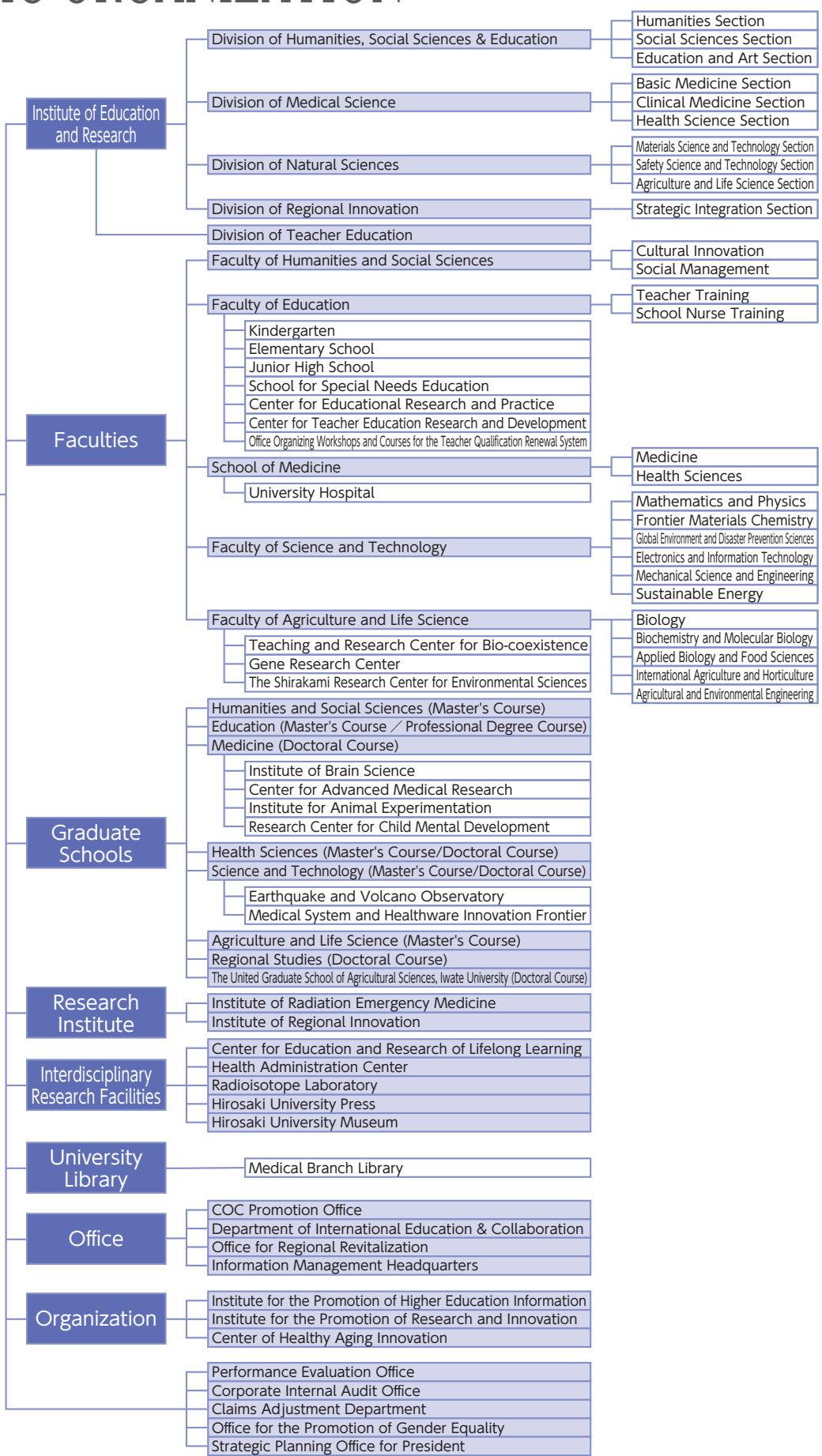
## Management

In order to resolve outstanding issues and realize our institutional goals, we will continue to seek university-wide consensus under the leadership of the president. Moreover, given the challenges facing national university corporations throughout the country, we must continue to constantly review and reevaluate our management practices and foster a common awareness and sense of unity amongst the members of our university community.



# ACADEMIC ORGANIZATION

**Hirosaki University**



IDEALS AND PRINCIPLES • FUNDAMENTAL GOALS / ACADEMIC ORGANIZATION



## Hirosaki University Logo

Concept: The university's logo takes cherry blossoms, for which Hirosaki City has great pride, as its motif. Blossoms representing each of five faculties are gathered together into one large blooming flower, facing the future. The circle in the center of the logo stands for the Earth, and expresses how graduates of Hirosaki University will make outstanding contributions to business and research, helping to make the world go round. In addition, the five different colors represent the different faculties: red for Medicine, orange for Education, green for Agriculture & Life Science, blue for Science & Technology, and purple for Humanities and Social Sciences. The image of the flowers scattered around the Earth like satellites also carries the meaning of Hirosaki University becoming a beacon for the region. Taken as a whole, the logo was designed to have a colorful, modern feel, brimming with freshness, vigor, and the energy of an enjoyable campus life.

Established July 24, 2006

## President, Executive Director, Auditor

As of May 1, 2019

President		Executive Director and Vice President		Auditor		Assistant to the President		Vice Executive Director		Total		Grand Total
M	F	M	F	M	F	M	F	M	F	M	F	
1		6	1	1	1(1)	3(2)		3(1)		14(3)	2(1)	16(4)

Note: Part-time positions are shown in ( ) and are included in the total number.

Note: For Vice Presidents, Assistants to the President, and Vice Executive Directors, numbers include cases where one person holds more than one position.

Divisions	Professors		Associate Professors		Lecturers		Assistant Professors		Research Associates		Teachers of Attached School		Total		Other Staff		Total		Grand Total
	M	F	M	F	M	F	M	F	M	F	M	F	M	F	M	F	M	F	
The Number of Present Employees	194	25	172	32	88	28	142	58	32	21	47	48	675	212	356	735	1,031	947	1,978
Administration Bureau															112	43	112	43	155
Faculty of Humanities and Social Sciences	22	6	24	6	8	3							54	15	5	3	59	18	77
Faculty of Education	32	6	22	6	12	8		1			47	48	113	69	10	5	123	74	197
Graduate School of Medicine	40	2	27	2	22	1	51	22	14	6			154	33	11	7	165	40	205
Graduate School of Health Sciences	19	9	9	6	10	8	13	11	2	3			53	37	7	2	60	39	99
University Hospital			8	1	29	4	49	17	15	12			101	34	161	644	262	678	940
Graduate School of Science and Technology	40	1	37	3	3		13	1	1				94	5	13	10	107	15	122
Faculty of Agriculture and Life Science	27	1	34	4			12	2					73	7	16	6	89	13	102
Graduate School of Regional Studies	2		2										4	0			4	0	4
Institute of Radiation Emergency Medicine	3						3						6	0	3		9	0	9
Institute of Regional Innovation	6		5					2					11	2	4		15	2	17
Center for Education and Research of Lifelong Learning					1								1	0			1	0	1
Health Administration Center	1			1		1							1	2		2	1	4	5
Radioisotope Laboratory													0	0		1	0	1	1
University Library													0	0	3	8	3	8	11
Department of International Education & Collaboration			2	2				1					2	3	3	3	5	6	11
Office for Regional Revitalization			1										1	0			1	0	1
Information Management Headquarters													0	0	5	1	5	1	6
Institute for the Promotion of Higher Education Information	1		1	1	2	2	1						5	3			5	3	8
Center of Healthy Aging Innovation	1				1	1							2	1			2	1	3
COC Promotion Office													0	0	3		3	0	3
Office for the Promotion of Gender Equality								1					0	1			0	1	1

Note: Number for staff working in the Corporate Internal Audit Office and Strategic Planning Office for President are included in the number for the Administration Bureau.

# Undergraduates

As of May 1, 2019

Faculties	Departments and Courses	Annual Admission Capacity	Transfer Student Second year	Transfer Student Third year	Enrollment Capacity	Actual Enrollment																				
						Freshmen			Sophomores			Juniors			Seniors			5th year			6th year			Grand Total		
						Total	M	F	Total	M	F	Total	M	F	Total	M	F	Total	M	F	Total	M	F	Total	M	F
Humanities and Social Sciences	Cultural Innovation	110			440	115	32	83	111	36	75	112	40	72	106	45	61							444	153	291
	Social Management	155			620	172	83	89	162	93	69	158	97	61	164	96	68							656	369	287
	<b>Total</b>	<b>265</b>			<b>1,060</b>	<b>287</b>	<b>115</b>	<b>172</b>	<b>273</b>	<b>129</b>	<b>144</b>	<b>270</b>	<b>137</b>	<b>133</b>	<b>270</b>	<b>141</b>	<b>129</b>							<b>1,100</b>	<b>522</b>	<b>578</b>
Humanities	Humanities and Cultural Studies														22	13	9							22	13	9
	Social Science and Social System Studies														22	10	12							22	10	12
	Economics and Commercial Sciences														18	16	2							18	16	2
	<b>Total</b>				<b>0</b>	<b>0</b>	<b>0</b>	<b>0</b>	<b>0</b>	<b>0</b>	<b>0</b>	<b>0</b>	<b>0</b>	<b>0</b>	<b>62</b>	<b>39</b>	<b>23</b>							<b>62</b>	<b>39</b>	<b>23</b>
Education	Teacher Training Division	150			600	158	71	87	152	65	87	156	77	79	169	90	79							635	303	332
	School Nurse Training Division	20			80	21	0	21	20	0	20	20	0	20	21	0	21							82	0	82
	Community Education Training Division														8	5	3							8	5	3
	<b>Total</b>	<b>170</b>			<b>680</b>	<b>179</b>	<b>71</b>	<b>108</b>	<b>172</b>	<b>65</b>	<b>107</b>	<b>176</b>	<b>77</b>	<b>99</b>	<b>198</b>	<b>95</b>	<b>103</b>							<b>725</b>	<b>308</b>	<b>417</b>
Medicine	Medicine	112	20		772	114	58	56	157	84	73	140	76	64	147	95	52	111	69	42	124	83	41	793	465	328
	Health Sciences	200		30	860	205	64	141	204	66	138	208	68	140	213	70	143							830	268	562
	<b>Total</b>	<b>312</b>	<b>20</b>	<b>30</b>	<b>1,632</b>	<b>319</b>	<b>122</b>	<b>197</b>	<b>361</b>	<b>150</b>	<b>211</b>	<b>348</b>	<b>144</b>	<b>204</b>	<b>360</b>	<b>165</b>	<b>195</b>	<b>111</b>	<b>69</b>	<b>42</b>	<b>124</b>	<b>83</b>	<b>41</b>	<b>1,623</b>	<b>733</b>	<b>890</b>
Science and Technology	Mathematics and Physics	78		2	316	76	66	10	81	72	9	75	67	8	80	66	14							312	271	41
	Frontier Materials Chemistry	52		1	210	52	35	17	52	42	10	51	37	14	57	45	12							212	159	53
	Global Environment and Disaster Prevention Sciences	65		2	264	67	53	14	67	43	24	66	50	16	66	51	15							266	197	69
	Electronics and Information Technology	55		2	224	57	47	10	59	50	9	59	57	2	64	57	7							239	211	28
	Mechanical Science and Engineering	80		2	324	82	74	8	81	75	6	80	71	9	78	74	4							321	294	27
	Sustainable Energy	30		1	122	28	21	7	32	27	5	30	25	5	31	23	8							121	96	25
	Advanced Physics					-			-			-			1	1	0							1	1	0
	Earth and Environmental Sciences					-			-			-			4	4	0							4	4	0
	Intelligent Machines and System Engineering					-			-			-			11	10	1							11	10	1
	<b>Total</b>	<b>360</b>		<b>10</b>	<b>1,460</b>	<b>362</b>	<b>296</b>	<b>66</b>	<b>372</b>	<b>309</b>	<b>63</b>	<b>361</b>	<b>307</b>	<b>54</b>	<b>392</b>	<b>331</b>	<b>61</b>							<b>1,487</b>	<b>1,243</b>	<b>244</b>
Agriculture and Life Science	Biology	40			160	43	31	12	40	29	11	40	26	14	42	32	10							165	118	47
	Biochemistry and Molecular Biology	40			160	40	16	24	41	25	16	42	26	16	45	26	19							168	93	75
	Applied Biology and Food Sciences	55			220	57	31	26	56	29	27	57	31	26	55	28	27							225	119	106
	International Agriculture and Horticulture	50			200	55	30	25	48	25	23	51	23	28	50	21	29							204	99	105
	Agriculture and Environmental Engineering	30			120	32	28	4	33	26	7	32	27	5	30	25	5							127	106	21
	Applied Bioscience														5	4	1							5	4	1
	Agriculture and Horticulture														7	4	3							7	4	3
	<b>Total</b>	<b>215</b>			<b>860</b>	<b>227</b>	<b>136</b>	<b>91</b>	<b>218</b>	<b>134</b>	<b>84</b>	<b>222</b>	<b>133</b>	<b>89</b>	<b>234</b>	<b>140</b>	<b>94</b>							<b>901</b>	<b>543</b>	<b>358</b>
<b>Grand Total</b>	<b>1,322</b>	<b>20</b>	<b>40</b>	<b>5,692</b>	<b>1,374</b>	<b>740</b>	<b>634</b>	<b>1,396</b>	<b>787</b>	<b>609</b>	<b>1,377</b>	<b>798</b>	<b>579</b>	<b>1,516</b>	<b>911</b>	<b>605</b>	<b>111</b>	<b>69</b>	<b>42</b>	<b>124</b>	<b>83</b>	<b>41</b>	<b>5,898</b>	<b>3,388</b>	<b>2,510</b>	



# Graduates

As of May 1, 2019

Classification			Annual Admission Capacity	Enrollment Capacity	Actual Enrollment																	
					Freshmen			Sophomores			Juniors			Seniors			Grand Total					
					Total	M	F	Total	M	F	Total	M	F	Total	M	F	Total	M	F			
Humanities and Social Sciences	Master's Course	Cultural Studies	10	20	13	6	7	18	9	9	/			/			31	15	16			
		Applied Social Sciences	6	12	9	7	2	11	3	8							20	10	10			
		Total	16	32	22	13	9	29	12	17							51	25	26			
Education	Master's Course	School Education	16	32	16	7	9	24	6	18	/			/			40	13	27			
		Curriculum Studies			-	/	/	1	0	1							1	0	1			
		Coordinated School Health (Yogo) Education			-	/	/	0	0	0							0	0	0			
		Total	16	32	16	7	9	25	6	19							41	13	28			
	Professional Degree Course	Professional Development of Teachers	16	32	19	12	7	13	8	5							32	20	12			
Medicine	Doctoral Course	Medical Science	60	240	55	36	19	42	33	9	57	37	20	103	73	30	257	179	78			
Health Sciences	Master's Course	Health Sciences	30	60	33	24	9	37	25	12	/			/			70	49	21			
	Doctoral Course	Health Sciences	12	36	14	10	4	14	10	4							21	8	13	49	28	21
Science and Technology	Master's Course	Science and Technology	120	240	107	92	15	107	92	15	/			/			214	184	30			
	Doctoral Course	Advanced Materials Science and Technology	6	18	3	3	0	4	3	1							3	2	1	10	8	2
		Safety Science and Technology	6	18	9	6	3	9	6	3							6	5	1	24	17	7
		Total	12	36	12	9	3	13	9	4							9	7	2	34	25	9
Agriculture and Life Science	Master's Course	Agriculture and Life Sciences	60	120	56	39	17	50	30	20	/			/			106	69	37			
Regional Studies	Doctoral Course	Regional Studies	6	18	6	2	4	7	5	2							25	16	9	38	23	15
Grand Total			348	846	340	244	96	337	230	107	112	68	44	103	73	30	892	615	277			

## The United Graduate School of Agricultural Sciences, Iwate University (Doctoral Course)

The current figure indicates the number of students who belong to Hirosaki University (supervising educators). As of May 1, 2019

Classification			Annual Admission Capacity	Enrollment Capacity	Actual Enrollment														
					Freshmen			Sophomores			Juniors			Seniors			Grand Total		
					Total	M	F	Total	M	F	Total	M	F	Total	M	F	Total	M	F
The United Graduate School of Agricultural Sciences, Iwate University (Doctoral Course)			24	80	7	4	3	9	7	2	8	5	3	/			24	16	8

## Attached School (Faculty of Education)

As of May 1, 2019

Classification		Annual Admission Capacity	Enrollment Capacity	Classes	Actual Enrollment								
					1st Year	2nd Year	3rd Year	4th Year	5th Year	6th Year	Total		
Kindergarten		90	4		(3-year-old) 17		(4-year-old) 25		(5-year-old) 22		64		
Elementary School		642	21		103	94	82	102	89	84	554		
Junior High School		495	15		164	164	161				489		
School for Special Needs Education	(Elementary)	18	3		(Lower) 6		(Intermediate) 5		(Higher) 6		17		
	(Junior High)	18	3		6	4	5				15		
	(Senior High)	24	3		8	8	8				24		
Total		1,287											1,163

# International Students

As of May 1, 2019

Classification	Country / Region Faculties, etc.	China	Taiwan	South Korea	Thailand	Malaysia	Singapore	Indonesia	Vietnam	Mongolia	Bangladesh	U.S.A.	Canada	France	Italy	Romania	Hungary	Uzbekistan	New Zealand	Fiji	Ethiopia	Cameroon	Total		
		Undergraduates	Private Regular Students	Humanities	1																				
Humanities and Social Sciences	7				2		3			3	1														16
Medicine	1																								1
Health Sciences	1			1																					2
Science and Technology	8					1	2																		11
Agriculture and Life Science	2				1		2			2															7
Private Research Students	Humanities and Social Sciences		5																						5
	Education		2																						2
	Science and Technology		1																						1
	Agriculture and Life Science		2																						2
Private Subject Students and Auditors	Humanities and Social Sciences		9	1	9	6							4	1	6	5	1			3					45
	Education		4																						4
	Science and Technology		3		1																				4
	Agriculture and Life Science		1		1									1				1							4
Students funded by the Japanese Government (Ministry of Education, Culture, Sports, Science and Technology) Japanese Studies Scholarship Students	Humanities and Social Sciences					1																			1
	Medicine																1							1	
	Health Sciences																					1		1	
Graduates	Students funded by the Japanese Government (Ministry of Education, Culture, Sports, Science and Technology) Regular Scholarship Students	Science and Technology				2			2															4	
		Education																				1			1
		Humanities and Social Sciences	26										1												27
	Private Regular Students	Education	4																						4
		Medicine	9																						9
		Health Sciences	2					1	2																5
		Science and Technology	17			1	1		1																20
		Agriculture and Life Science	9							1	1														11
		Regional Studies	5			1																			6
		The United Graduate School of Agriculture Sciences	4							2		2							1				1		10
Private Research Students	Agriculture and Life Science	1																						1	
Special Research Students	Science and Technology	1																						1	
Total		125	2	14	12	8	1	5	8	2	2	5	2	6	5	1	2	1	3	1	1	1	1	207	

## International Academic Exchange Agreements (University-wide Agreements)

As of May 1, 2019

Country / Region		University	Date of Agreement
North America / South America	U.S.A	University of Tennessee at Martin	July 8, 1980
		University of Maine	June 26, 1997
		San Diego State University	March 19, 2001
		University of Hawai'i Community Colleges	October 30, 2017
	Canada	University of Saskatchewan	December 7, 2001
		Mount Royal University	June 1, 2005
		Thompson Rivers University	October 19, 2006
Republic of Chile	University of La Frontera	June 25, 2002	
United Mexican States	The Benito Juarez Autonomous University	May 13, 2016	
Europe	French Republic	University Bordeaux Montaigne	January 31, 1994
	Russian Federation	Far Eastern State Medical University	December 14, 1995
		M. V. Lomonosov Moscow State University	September 20, 2000
		Irkutsk State University	March 20, 2002
	Romania	Hyperion University	September 11, 1998
	Federal Republic of Germany	University of Trier	May 3, 1999
	Hungary	University of Debrecen	December 22, 2000
Italian Republic	University of Catania	March 27, 2018	
Oceania	New Zealand	University of Otago	September 20, 2000
		Auckland University of Technology	December 12, 2001
East Asia	People's Republic of China	Harbin Normal University	August 1, 1995
		Yanbian University	August 28, 2000
		Zhengzhou University	October 12, 2000
		Dalian University of Technology	December 28, 2009
		Xinjiang Institute of Engineering	September 23, 2016
		Qingdao Agricultural University	December 26, 2016
		Taiyuan University of Technology	April 19, 2017
	Shenyang University of Chemical Technology	November 20, 2017	
	Republic of Korea	Nam Seoul University	June 1, 2001
		Kyungpook National University	July 11, 2001
		Pusan National University	December 12, 2001
		Kyonggi University	September 25, 2002
		National University of Kaohsiung	November 17, 2016
		Kainan University	November 18, 2016
Mackay Medical College		October 30, 2017	
Taiwan	National Pingtung University	April 10, 2018	
	Chinese Culture University	February 19, 2019	
Southeast Asia	Kingdom of Thailand	Chiang Mai University	November 2, 2000
		Khon Kaen University	May 6, 2008
		Thammasat University	April 14, 2017
	Malaysia	Universiti Tunku Abdul Rahman	April 11, 2017
	Republic of Indonesia	Institut Teknologi Bandung	May 2, 2017
National Nuclear Energy Agency		October 3, 2017	
Socialist Republic of Viet Nam	An Giang University	July 2, 2018	
Central Asia	Republic of Uzbekistan	Tashkent State Agrarian University	September 19, 2016
		Samarkand Agricultural Institute/University	September 22, 2016
	Turkmenistan	Turkmen Agricultural University named after S.A.Nyyazov	March 28, 2019
Africa	People's Democratic Republic of Algeria	University of Science and Technology of Oran Mohamed Boudiaf	March 5, 2018



# International Academic Exchange Agreements (Discipline-specific Agreements)

As of May 1, 2019

Country		University	Date of Agreement	Note
North America / South America	U.S.A	University of Tennessee Center for the Health Sciences	May 19, 1982	(School of Medicine)
		University of South Carolina	July 20, 1994	(Faculty of Education)
	Jamaica	The University of the West Indies	February 25, 2002	(School of Medicine)
Europe	Russian Federation	Botanical Garden – Institute Far Eastern Branch Russian Academy of Sciences	February 20, 2015	(Faculty of Agriculture and Life Science)
	Hungary	University of Pannonia, Faculty of Engineering, Institute of Radiochemistry and Radioecology	March 18, 2013	(Institute of Radiation Emergency Medicine)
	Republic of Slovenia	Faculty of Medicine, University of Ljubljana	November 28, 2014	(School of Medicine)
	Kingdom of Sweden	Centre for Radiation Protection Research, Stockholm University	March 6, 2013	(Graduate School of Health Sciences)
	Republic of Finland	Ruralia Institute, University of Helsinki	September 7, 2009	(Faculty of Humanities and Social Sciences)
East Asia	People's Republic of China	China Medical University	October 25, 2005	(School of Medicine)
		Department of Physics and Electronic Information Science, Hengyang Normal University	November 11, 2014	(Institute of Radiation Emergency Medicine)
		College of Horticulture, ShenYang Agricultural University	November 3, 2015	(Faculty of Agriculture and Life Science)
		National Institute for Radiological Protection, China CDC	May 2, 2016	(Institute of Radiation Emergency Medicine)
		School of Chemical Engineering, Sichuan University	June 8, 2016	(Institute of Regional Innovation)
		School of Radiation Medicine and Protection and Radiation Medicine and Interdisciplinary Sciences, Soochow University	May 21, 2018	(Institute of Radiation Emergency Medicine)
		Xishuangbanna Tropical Botanical Garden, Chinese Academy of Sciences	October 29, 2018	(Faculty of Agriculture and Life Science)
		Institute of Radiation Medicine, Fudan University	March 12, 2019	(Institute of Radiation Emergency Medicine)
	Republic of Korea	Korea Institute of Radiological and Medical Sciences (KIRAMS)	January 21, 2013	(Institute of Radiation Emergency Medicine)
		Dongnam Institute of Radiological & Medical Sciences (DIRAMS)	June 14, 2016	(Institute of Radiation Emergency Medicine)
		The College of Agriculture, Life & Environment Sciences, Chungbuk National University	December 6, 2018	(Faculty of Agriculture and Life Science)
		College of Agriculture and Life Sciences, Kangwon National University	November 5, 2018	(Faculty of Agriculture and Life Science)
	Taiwan	College of Agriculture and Natural Resources, National Chung Hsing University	November 15, 2017	(Faculty of Agriculture and Life Science)
Southeast Asia	Kingdom of Thailand	Faculty of Agriculture, Kasetsart University	May 27, 2015	(Faculty of Agriculture and Life Science)
		Faculty of Science, Chulalongkorn University	January 30, 2018	(Institute of Regional Innovation)
		Faculty of Science, Kasetsart University	July 11, 2018	(Institute of Radiation Emergency Medicine)
		School of Energy and Environment, University of Phayao	August 6, 2018	(Faculty of Agriculture and Life Science)
		School of Management and Information Sciences, University of Phayao	August 6, 2018	(Faculty of Agriculture and Life Science)
		Faculty of Engineering, Chulalongkorn University	December 21, 2018	(Institute of Radiation Emergency Medicine)
	Socialist Republic of Viet Nam	Institute for Nuclear Science and Technology, Vietnam Atomic Energy Institute	November 22, 2013	(Institute of Radiation Emergency Medicine)
	Republic of the Philippines	The Philippine Nuclear Research Institute	January 30, 2015	(Institute of Radiation Emergency Medicine)
South Asia	India	Faculty of Science, Alagappa University	August 7, 2018	(Faculty of Agriculture and Life Science)
		Faculty of Arts, Alagappa University	August 7, 2018	(Faculty of Agriculture and Life Science)
	People's Republic of Bangladesh	Atomic Energy Centre (AEC), Dhaka, Bangladesh Atomic Energy Commission	October 15, 2018	(Institute of Radiation Emergency Medicine)
		Faculty of Agriculture, Hajee Mohammad Danesh Science & Technology University	November 24, 2018	(Faculty of Agriculture and Life Science)

INTERNATIONAL ACADEMIC EXCHANGE AGREEMENTS

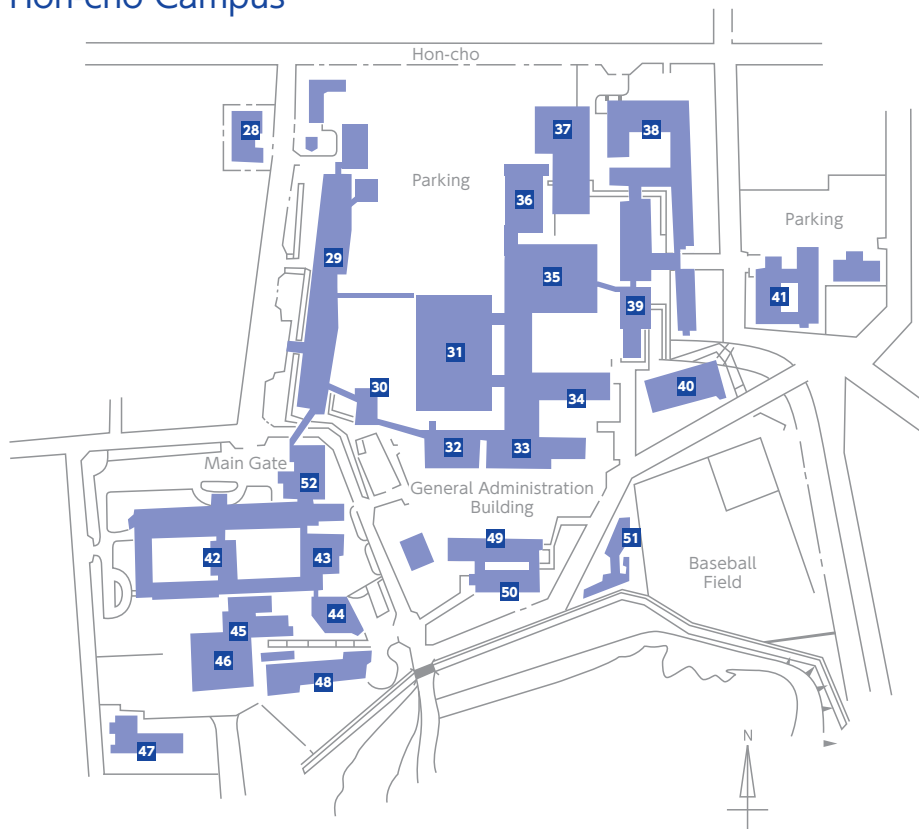


## Bunkyo-cho Campus

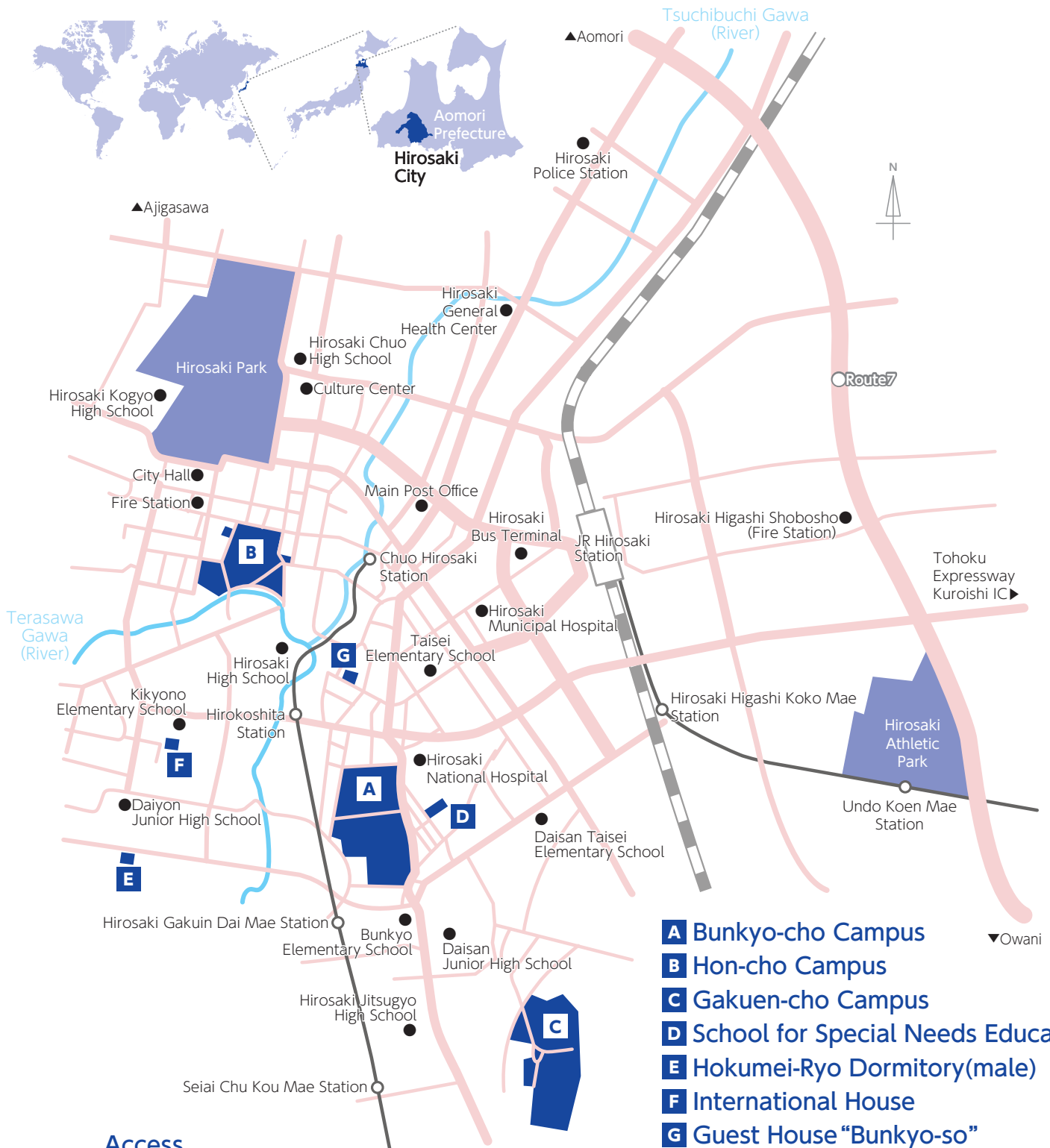


- 01 Hirosaki Higher School Foreign Lecturer Residence (Hirodai Cafe)
- 02 Information (Guard Gate)
- 03 Administration Bureau
- 04 Health Administration Center
- 05 50th Anniversary Auditorium
- 06 General Education Building
- 07 Faculty of Humanities and Social Sciences Building
- 08 University Library
- 09 University Center 10 Commons
- 11 Faculty of Education Building
- 12 University Museum
- 13 Center for Education Research and Practice
- 14 Gymnasium No.1 15 Kyudo Hall
- 16 Earthquake and Volcano Observatory
- 17 Information Management Headquarters, Information Technology Center
- 18 Gene Research Center
- 19 60th Anniversary Auditorium 'Collabo HiroDai'
- 20 Collaboration Center
- 21 Faculty of Science and Technology Building No.1
- 22 Faculty of Science and Technology Building No.2
- 23 Faculty of Agriculture and Life Science Building
- 24 Greenhouse
- 25 Gymnasium No.2 26 Martial Arts Hall
- 27 Building for Extracurricular Activities

## Hon-cho Campus



- 28 Medical Communications Center
- 29 Clinical Research Building
- 30 Clinical Lecture Building
- 31 Outpatient Clinic
- 32 Energy Center
- 33 First Ward
- 34 Second Ward
- 35 Central Clinical Service Building
- 36 Advanced Emergency and Disaster Medical Center
- 37 Multi-storey Car Parking
- 38 Graduate School of Health Sciences
- 39 Multidiscipline Medicine Building Institute of Radiation Emergency Medicine
- 40 Gymnasium 41 Lodging for Nurses
- 42 Graduate School of Medicine
- 43 Hirosaki University Medical Branch Library
- 44 Foundation Lecture Building
- 45 Radioisotope Laboratory
- 46 Extracurricular Activity Equipment Storage Area
- 47 Shared Use Institution, Hon-cho Campus Center for Advanced Medical Research
- 48 Institute of Brain Science
- 49 Student Support Center 1 (Learning Center)
- 50 Hirodai Nursery
- 51 Student Support Center 2 (Student Friendship Center)
- 52 Innovation Center for Health Promotion



- A** Bunkyo-cho Campus
- B** Hon-cho Campus
- C** Gakuen-cho Campus
- D** School for Special Needs Education
- E** Hokumei-Ryo Dormitory(male)
- F** International House
- G** Guest House “Bunkyo-so”

**Access**

Tokyo	Tohoku Shinkansen (3h10m)	Shin Aomori Station	JR Super Express (30m)	100yen bus (Dotemachi Line) (15m)	University Hospital Mae	Hon-cho Campus
	Airplane (1h20m)	Aomori Airport	Konan Bus (Local Bus) (55m)	*6 Komagoshi Line (15m)		
Sapporo	JR Super Express (3h30m)	Shin Hakodate Hokuto Station	Hokkaido Shinkansen (1h10m)	Shin Aomori Station	JR Super Express (30m)	Bunkyo-cho Campus
	Airplane (45m)		Aomori Airport	Konan Bus (Local Bus) (55m)		
Morioka	Highway Bus (Yodel) (2h15m)					
Sendai	Highway Bus (Castle) (4h20m)					

\*Chuo Exit Busstop





National University Corporation Hirosaki University

1 Bunkyo-cho, Hirosaki, Aomori, 036-8560, Japan

URL <https://www.hirosaki-u.ac.jp/en/>

Designed by SHINICHIRO SEITO, Under the Supervision of Professor YOSHIRO ISHIKAWA

Faculty of Education, Hirosaki University

