



2020
HIROSAKI UNIVERSITY
Overview



IDEALS AND PRINCIPLES • FUNDAMENTAL GOALS

Ideals and Principles

Hirosaki University has, in the spirit of the Fundamental Law of Education, established the following institutional goals: 1) to incorporate extensive bodies of knowledge into our campus culture; 2) to engage in the teaching of and research in a broad range of specialized scholarly fields; 3) to educate persons of character and integrity who can contribute to human culture.

Fundamental Goals: The Hirosaki University Vision of the Future

Hirosaki University, in its role as one of the comprehensive public universities in the north of Japan, has set as its foundation a commitment to serve as a core actor for regional revitalization. Taking this commitment into consideration, we established four strategic areas of concentration, renewable energy, the environment, radiation emergency medicine, and food, positioning them as objectives in the second medium-term plan. We have subsequently integrated these strategic and related themes into our research and educational programs. We have also made great headway in establishing ties with local organizations and governmental bodies. Moreover, as we enter the third round of medium-term objectives, we will continue to contribute to local society through human resource development and the fostering of innovation.

Hirosaki University has recently implemented a university-wide reorganization. We have 1) strengthened human resource development programs in the fields of science, technology and

agriculture that contribute to innovation, 2) made qualitative improvements in the teacher training program for elementary school teachers, and 3) built up both the educational and research arms of the graduate schools. Moreover, among our third medium-term objectives, we will continually review the themes and reevaluate and reform the system by which research is implemented in the original four core areas of concentration. Furthermore, although we have independently implemented university governance reforms through wide-ranging on-campus discussion and debate, we must continue to verify and reexamine these outcomes. We must do so in order to enhance the functioning of and to implement the reforms instituted under the management system that was introduced after the establishment of the national university corporation system. Ultimately, our mission is to live up to our slogan of “communicating to the world; creating with our community”

Education • Research Organization

With the successful completion of the above-mentioned reorganization of the educational and research system, we must now turn to meet the challenges of globalization, low birthrates and an aging society as well as the need for innovation creation, challenges not only to Hirosaki University and the surrounding region, but to the nation as a whole. Moreover, in the face of recent scientific and technological advances, there has been a shift towards an emphasis on postgraduate education, which has inevitably come to serve as the linchpin of higher education. We are therefore reexamining our postgraduate educational and research programs, while remaining conscious of the continuity that must exist between undergraduate and postgraduate study.

Educational Reform

Hirosaki University, in its role as a core actor in the regional revitalization process, has a major responsibility to train future local leaders who can address and resolve regional issues from a truly global perspective. However, in order to take advantage of the specialized knowledge and technological know-how of our faculty and other researchers, we must first cultivate the basic knowledge and cultural understanding that serve as the foundation of advanced study. In this sense, the role of liberal arts education in the formation of harmonious human relations is critical. Moreover, in order to best navigate the educational reform we find ourselves a part of, we must reinforce our educational infrastructure, make improvements in the way we select students for admission, tighten performance evaluation, strengthen active learning programs, promote learning that is designed by students themselves, and strengthen the student support system.

Promotion of Research

We consider the promotion of basic research, research that is recognized internationally as well as research that contributes to regional revitalization to be essential elements of our mission as a university. With this in mind, we offer support to young researchers, promote international research exchange, and encourage the securing of competitive research funds and the creation and utilization of intellectual property. In addition, we will continue to promote research in the areas we have designated as strategic areas of concentration: renewable energy, the environment, radiation emergency medicine, and food.

Regional Cooperation and Regional Contribution

To fulfill our role as a core actor in the regional revitalization process, we will continue to strengthen our ties with local governments, companies and citizens groups. With respect to education, we are incorporating regional issues into our curriculum through active-learning and other pedagogical approaches that encourage students to think about and offer solutions to local and regional issues. As far as research is concerned, we are contributing to innovation creation through joint research projects with the local community. In addition, we are cooperating with other institutions of higher learning in the region, and are actively involved in joint educational and research activities that contribute to regional revitalization.

Globalization

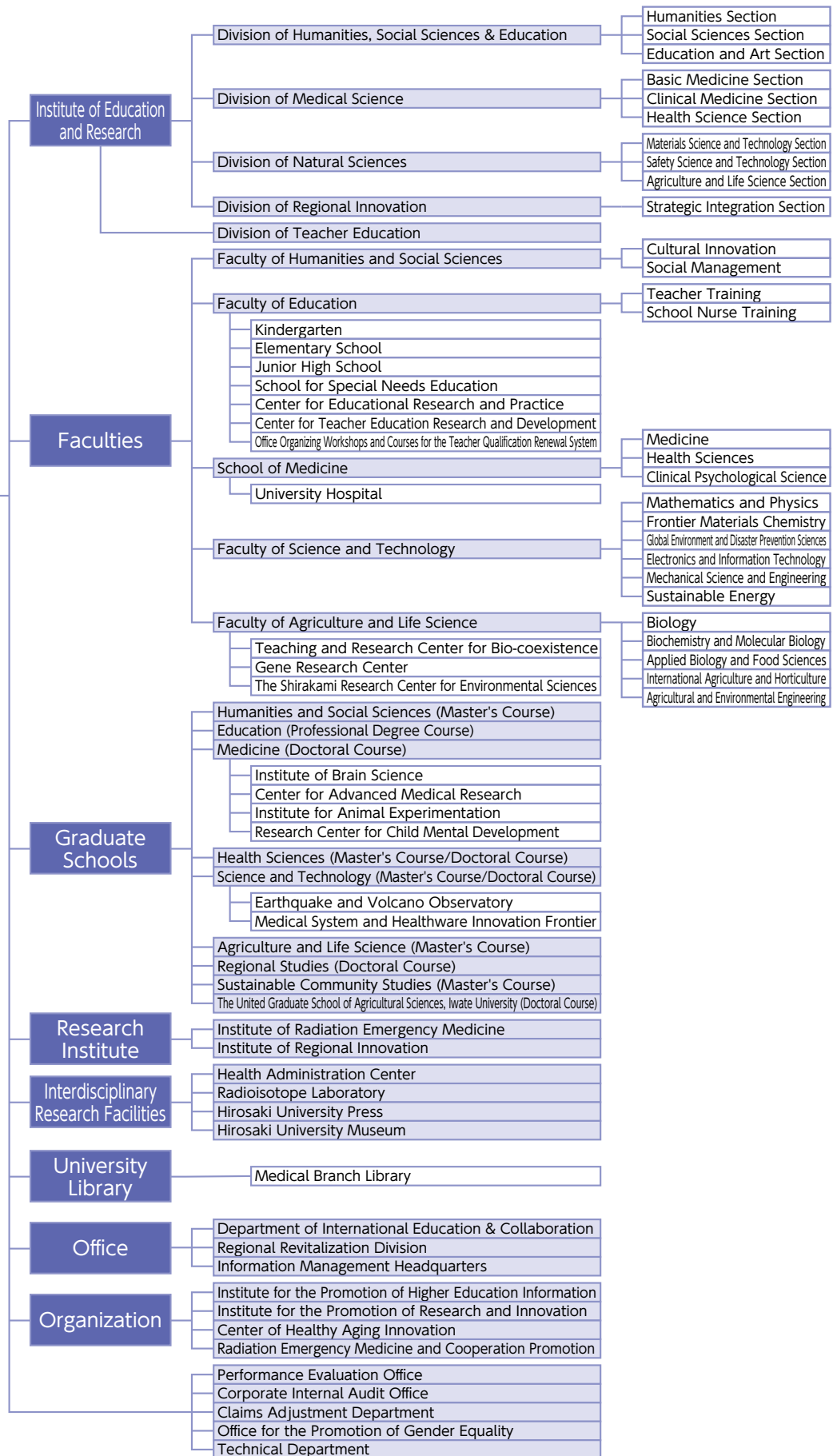
International academic exchange and the fostering of a global perspective has become an important issue for local communities as well as for the nation as a whole. Therefore, we here at Hirosaki University recognize the need to accelerate our own globalization. In addition to the general strengthening of education and research programs, we are working to enhance the internationalization and diversity of our campus as well as to offer support to students who wish to gain overseas experience.

Management

In order to resolve outstanding issues and realize our institutional goals, we will continue to seek university-wide consensus under the leadership of the president. Moreover, given the challenges facing national university corporations throughout the country, we must continue to constantly review and reevaluate our management practices and foster a common awareness and sense of unity amongst the members of our university community.

ACADEMIC ORGANIZATION

Hirosaki University





Hirosaki University Logo

Concept: The university's logo takes cherry blossoms, for which Hirosaki City has great pride, as its motif. Blossoms representing each of five faculties are gathered together into one large blooming flower, facing the future. The circle in the center of the logo stands for the Earth, and expresses how graduates of Hirosaki University will make outstanding contributions to business and research, helping to make the world go round. In addition, the five different colors represent the different faculties: red for Medicine, orange for Education, green for Agriculture & Life Science, blue for Science & Technology, and purple for Humanities and Social Sciences. The image of the flowers scattered around the Earth like satellites also carries the meaning of Hirosaki University becoming a beacon for the region. Taken as a whole, the logo was designed to have a colorful, modern feel, brimming with freshness, vigor, and the energy of an enjoyable campus life.

Established July 24, 2006

President, Executive Director, Auditor

As of May 1, 2020

President		Executive Director and Vice President		Auditor		Assistant to the President		Vice Executive Director		Total		Grand Total
M	F	M	F	M	F	M	F	M	F	M	F	
1		4	1	1	1(1)	3(2)		4(3)		13(5)	2(1)	15(6)

Note: Part-time positions are shown in () and are included in the total number.

Note: For Assistants to the President and Vice Executive Directors, numbers include cases where one person holds more than one position.

Divisions	Professors		Associate Professors		Lecturers		Assistant Professors		Research Associates		Teachers of Attached School		Total		Other Staff		Total		Grand Total
	M	F	M	F	M	F	M	F	M	F	M	F	M	F	M	F	M	F	
The Number of Present Employees	191	25	173	34	82	21	152	63	37	17	47	47	682	207	370	749	1,052	956	2,008
Administration Bureau													0	0	120	47	120	47	167
Faculty of Humanities and Social Sciences	20	5	25	7	6	2	2						53	14	5	3	58	17	75
Faculty of Education	34	6	21	5	11	7		1			47	47	113	66	10	5	123	71	194
Graduate School of Medicine	37	2	28	3	22	1	58	23	13	4			158	33	12	6	170	39	209
Graduate School of Health Sciences	22	10	9	8	9	5	15	13	2	2			57	38	5	6	62	44	106
University Hospital			8	1	30	3	46	16	21	11			105	31	176	652	281	683	964
Graduate School of Science and Technology	39	1	37	3	3		14	1	1				94	5	12	10	106	15	121
Faculty of Agriculture and Life Science	26	1	33	4			13	2					72	7	15	7	87	14	101
Graduate School of Regional Studies	2		2										4	0			4	0	4
Institute of Radiation Emergency Medicine	3		1				1	1					5	1	2	1	7	2	9
Institute of Regional Innovation	6		5					2					11	2	4		15	2	17
Health Administration Center	1					1							1	1		2	1	3	4
Radioisotope Laboratory													0	0	1	1	1	1	2
University Library													0	0	5	6	5	6	11
Department of International Education & Collaboration			2	2				1					2	3	3	3	5	6	11
Regional Revitalization Division			1										1	0			1	0	1
Institute for the Promotion of Higher Education Information			1	1	1	1	3	1					5	3			5	3	8
Center of Healthy Aging Innovation	1					1		1					1	2			1	2	3
Office for the Promotion of Gender Equality								1					0	1			0	1	1

Note: Number for staff working in the Corporate Internal Audit Office are included in the number for the Administration Bureau.

Undergraduates

As of May 1, 2020

Faculties	Departments and Courses	Annual Admission Capacity	Transfer Student	Second year Student	Third year Transfer Capacity	Enrollment Capacity	Actual Enrollment																				
							Freshmen			Sophomores			Juniors			Seniors			5th year			6th year			Grand Total		
							M	F	Sub Total	M	F	Sub Total	M	F	Sub Total	M	F	Sub Total	M	F	Sub Total	M	F	Sub Total	M	F	Total
Humanities and Social Sciences	Cultural Innovation	110			440	47	69	116	33	83	116	35	74	109	50	76	126							165	302	467	
	Social Management	155			620	98	68	166	84	90	174	91	68	159	108	65	173							381	291	672	
	Total	265			1,060	145	137	282	117	173	290	126	142	268	158	141	299							546	593	1,139	
Humanities	Humanities and Cultural Studies							-			-			5	2	7							5	2	7		
	Social Science and Social System Studies							-			-			2	2	4							2	2	4		
	Economics and Commercial Sciences							-			-			9	1	10							9	1	10		
	Total				0	0	0	0	0	0	0	0	0	16	5	21							16	5	21		
Education	Teacher Training Division	140			590	71	81	152	70	87	157	65	87	152	93	86	179							299	341	640	
	School Nurse Training Division	20			80	0	22	22	0	21	21	0	20	20	0	20	20							0	83	83	
	Community Education Training Division							-			-			3	1	4							3	1	4		
	Total	160			670	71	103	174	70	108	178	65	107	172	96	107	203							302	425	727	
Medicine	Medicine	112	20		772	66	49	115	75	65	140	81	71	152	72	63	135	95	51	146	68	42	110	457	341	798	
	Health Sciences	200		30	860	68	136	204	64	141	205	64	139	203	72	145	217							268	561	829	
	Clinical Psychological Science	10			10	4	6	10			-			-			-							4	6	10	
	Total	322	20	30	1,642	138	191	329	139	206	345	145	210	355	144	208	352	95	51	146	68	42	110	729	908	1,637	
Science and Technology	Mathematics and Physics	78		2	316	75	7	82	66	9	75	72	9	81	66	9	75							279	34	313	
	Frontier Materials Chemistry	52		1	210	41	11	52	34	17	51	41	9	50	45	14	59							161	51	212	
	Global Environment and Disaster Prevention Sciences	65		2	264	51	14	65	53	14	67	42	24	66	53	17	70							199	69	268	
	Electronics and Information Technology	55		2	224	56	2	58	47	10	57	50	9	59	64	2	66							217	23	240	
	Mechanical Science and Engineering	80		2	324	73	7	80	69	8	77	73	6	79	77	9	86							292	30	322	
	Sustainable Energy	30		1	122	26	5	31	20	7	27	27	5	32	25	5	30							98	22	120	
	Earth and Environmental Sciences							-			-			3	0	3							3	0	3		
	Intelligent Machines and System Engineering							-			-			5	0	5							5	0	5		
Total	360		10	1,460	322	46	368	289	65	354	305	62	367	338	56	394							1,254	229	1,483		
Agriculture and Life Science	Biology	40			160	30	11	41	29	12	41	28	11	39	29	14	43							116	48	164	
	Biochemistry and Molecular Biology	40			160	22	19	41	17	24	41	26	17	43	29	18	47							94	78	172	
	Applied Biology and Food Sciences	55			220	24	34	58	31	26	57	29	27	56	32	27	59							116	114	230	
	International Agriculture and Horticulture	50			200	28	25	53	30	24	54	25	24	49	28	29	57							111	102	213	
	Agriculture and Environmental Engineering	30			120	23	8	31	27	4	31	27	7	34	29	5	34							106	24	130	
	Total	215			860	127	97	224	134	90	224	135	86	221	147	93	240							543	366	909	
Grand Total	1,322	20	40	5,692	803	574	1,377	749	642	1,391	776	607	1,383	899	610	1,509	95	51	146	68	42	110	3,390	2,526	5,916		

Graduate Schools

As of May 1, 2020

Classification			Annual Admission Capacity	Enrollment Capacity	Actual Enrollment															
					Freshmen			Sophomores			Juniors			Seniors			Grand Total			
					M	F	Sub Total	M	F	Sub Total	M	F	Sub Total	M	F	Sub Total	M	F	Total	
Humanities and Social Sciences	Master's Course	Humanities and Social Sciences	16	16	7	4	11			-							7	4	11	
		Cultural Studies		10			-	7	8	15								7	8	15
		Applied Social Sciences		6			-	8	3	11								8	3	11
		Total	16	32	7	4	11	15	11	26								22	15	37
Education	Master's Course	School Education		16			-	8	12	20							8	12	20	
		Curriculum Studies					-	0	1	1							0	1	1	
		Total		16	0	0	0	8	13	21							8	13	21	
Professional Degree Course	Professional Development of Teachers	18	34	8	4	12	12	7	19							20	11	31		
Medicine	Doctoral Course	Medical Science	60	240	34	13	47	36	18	54	33	9	42	94	31	125	197	71	268	
Health Sciences	Master's Course	Health Sciences	30	60	19	11	30	28	12	40							47	23	70	
	Doctoral Course	Health Sciences	12	36	10	3	13	10	4	14	15	11	26				35	18	53	
Science and Technology	Master's Course	Science and Technology	120	240	95	12	107	96	15	111							191	27	218	
	Doctoral Course	Advanced Materials Science and Technology	6	18	0	0	0	2	0	2	4	2	6				6	2	8	
		Safety Science and Technology	6	18	3	4	7	6	3	9	8	3	11				17	10	27	
Total		12	36	3	4	7	8	3	11	12	5	17				23	12	35		
Agriculture and Life Science	Master's Course	Agriculture and Life Sciences	50	110	30	14	44	39	19	58							69	33	102	
Sustainable Community Studies	Master's Course	Community Renovation	15	15	7	6	13			-							7	6	13	
		Industry Development Sciences	15	15	6	6	12			-							6	6	12	
		Total	30	30	13	12	25	0	0	0							13	12	25	
Regional Studies	Doctoral Course	Regional Studies	6	18	4	2	6	2	4	6	17	9	26				23	15	38	
Grand Total			354	852	223	79	302	254	106	360	77	34	111	94	31	125	648	250	898	

The United Graduate School of Agricultural Sciences, Iwate University (Doctoral Course)

The current figure indicates the number of students who belong to Hirosaki University (supervising educators). As of May 1, 2020

Classification			Annual Admission Capacity	Enrollment Capacity	Actual Enrollment														
					Freshmen			Sophomores			Juniors			Seniors			Grand Total		
					M	F	Sub Total	M	F	Sub Total	M	F	Sub Total	M	F	Sub Total	M	F	Total
The United Graduate School of Agricultural Sciences, Iwate University (Doctoral Course)			24	72	8	2	10	4	2	6	7	3	10				19	7	26

Attached School (Faculty of Education)

As of May 1, 2020

Classification		Enrollment Capacity	Classes	Actual Enrollment							
				1st Year	2nd Year	3rd Year	4th Year	5th Year	6th Year	Total	
Kindergarten		90	4	(3-year-old) 10		(4-year-old) 19		(5-year-old) 25		54	
Elementary School		642	21	88	101	92	79	101	88	549	
Junior High School		495	15	164	163	164				491	
School for Special Needs Education	(Elementary)	18	3	(Lower) 5		(Intermediate) 5		(Higher) 6		16	
	(Junior High)	18	3	6	6	4				16	
	(Senior High)	24	3	7	8	8				23	
Total		1,287									1,149

International Students

As of May 1, 2020

Classification	Faculties, etc.	Country / Region																Total					
		China	Taiwan	South Korea	Thailand	Malaysia	Singapore	Indonesia	Vietnam	Bangladesh	U.S.A.	Brazil	Panama	Azerbaijan	France	Egypt	India		Uzbekistan	Kenya	Zimbabwe	Cameroon	
Undergraduates	Private Regular Students	Humanities and Social Sciences	9		1		3		4														17
		Medicine	2																				2
		Health Sciences		1																			1
		Science and Technology	8				1																9
		Agriculture and Life Science	4		1		2		2														9
	Private Research Students	Humanities and Social Sciences	9																				9
		Education	2																				2
		Health Sciences	1																				1
	Private Subject Students and Auditors	Humanities and Social Sciences	7	10		6									3								26
		Education	4	1							1												6
		Science and Technology	1	1																			2
	Students funded by the Japanese Government (MEXT*) Teacher Training Students	Education											1							1	1		3
	Students funded by the Japanese Government (MEXT*) Japanese Studies Scholarship Students	Humanities and Social Sciences	1									1		1									3
Graduates	Students funded by the Japanese Government (MEXT*) Regular Scholarship Students	Health Sciences																			1	1	
		Science and Technology				3		1															4
		Agriculture and Life Science							1	1													2
		The United Graduate School of Agriculture Sciences								1								1					2
	Private Regular Students	Humanities and Social Sciences	15								1												16
		Education	2																				2
		Medicine	10																				10
		Health Sciences						1	1														2
		Science and Technology	19			1			1														21
		Agriculture and Life Science	12																				12
Sustainable Community Studies		13								1												14	
Regional Studies		4			1																	5	
The United Graduate School of Agriculture Sciences	3							1	2						1	1					8		
Private Research Students	Health Sciences														1							1	
Total		126	13	2	11	6	1	3	8	5	2	1	1	1	3	2	1	1	1	1	1	190	

*MEXT: Ministry of Education, Culture, Sports, Science and Technology

International Academic Exchange Agreements (University-wide Agreements)

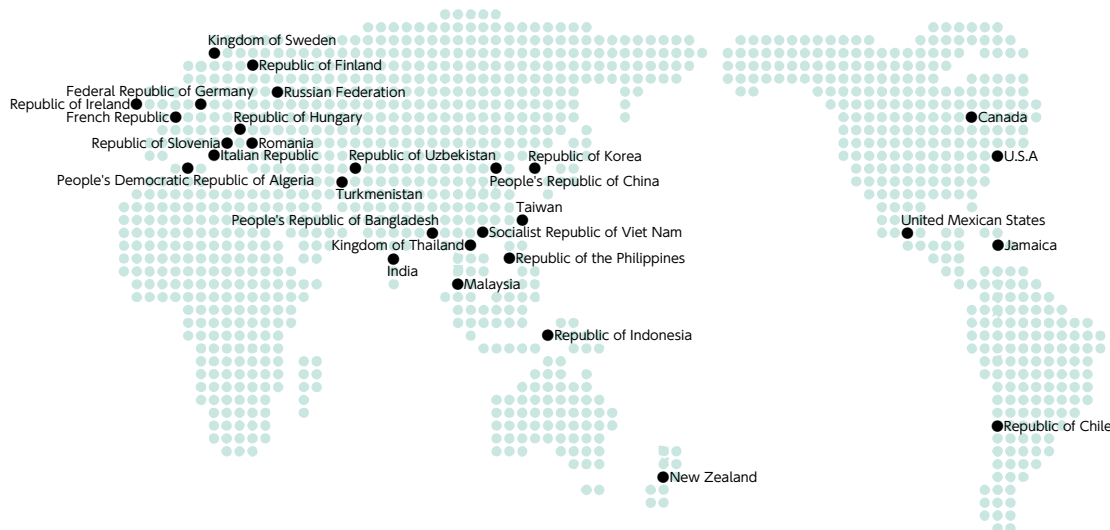
As of May 1, 2020

Country / Region		University	Date of Agreement
North America / South America	U.S.A	University of Tennessee at Martin	July 8, 1980
		University of Maine	June 26, 1997
		San Diego State University	March 19, 2001
		University of Hawai'i Community Colleges	October 30, 2017
	Canada	University of Saskatchewan	December 7, 2001
		Mount Royal University	June 1, 2005
		Thompson Rivers University	October 19, 2006
Republic of Chile	University of La Frontera	June 25, 2002	
United Mexican States	The Benito Juarez Autonomous University	May 13, 2016	
Europe	French Republic	University Bordeaux Montaigne	January 31, 1994
	Russian Federation	Far Eastern State Medical University	December 14, 1995
		M. V. Lomonosov Moscow State University	September 20, 2000
		Irkutsk State University	March 20, 2002
	Republic of Ireland	Environmental Protection Agency	June 13, 2019
	Romania	Hyperion University	September 11, 1998
		Alexandru Ioan Cuza University of Iasi	March 9, 2020
	Federal Republic of Germany	University of Trier	May 3, 1999
Republic of Hungary	University of Debrecen	December 22, 2000	
Italian Republic	University of Catania	March 27, 2018	
Oceania	New Zealand	University of Otago	September 20, 2000
		Auckland University of Technology	December 12, 2001
East Asia	People's Republic of China	Harbin Normal University	August 1, 1995
		Yanbian University	August 28, 2000
		Zhengzhou University	October 12, 2000
		Dalian University of Technology	December 28, 2009
		Xinjiang Institute of Engineering	September 23, 2016
		Qingdao Agricultural University	December 26, 2016
		Taiyuan University of Technology	April 19, 2017
		Shenyang University of Chemical Technology	November 20, 2017
		Central South University of Forestry and Technology	June 5, 2019
	Northeastern University	December 1, 2019	
	Republic of Korea	Nam Seoul University	June 1, 2001
		Kyungpook National University	July 11, 2001
		Pusan National University	December 12, 2001
		Kyonggi University	September 25, 2002
	Taiwan	National University of Kaohsiung	November 17, 2016
		Kainan University	November 18, 2016
		Mackay Medical College	October 30, 2017
		National Pingtung University	April 10, 2018
Chinese Culture University		February 19, 2019	
Southeast Asia	Kingdom of Thailand	Chiang Mai University	November 2, 2000
		Khon Kaen University	May 6, 2008
		Thammasat University	April 14, 2017
	Malaysia	Universiti Tunku Abdul Rahman	April 11, 2017
	Republic of Indonesia	Institut Teknologi Bandung	May 2, 2017
		National Nuclear Energy Agency	October 3, 2017
Socialist Republic of Viet Nam	An Giang University	July 2, 2018	
Central Asia	Republic of Uzbekistan	Tashkent State Agrarian University	September 19, 2016
		Samarkand Agricultural Institute/University	September 22, 2016
	Turkmenistan	Turkmen Agricultural University named after S.A.Nyyazov	March 28, 2019
Africa	People's Democratic Republic of Algeria	University of Science and Technology of Oran Mohamed Boudiaf	March 5, 2018

International Academic Exchange Agreements (Discipline-specific Agreements)

As of May 1, 2020

Note	Country		University	Date of Agreement	
Faculty of Humanities and Social Sciences	Europe	Republic of Finland	Ruralia Institute, University of Helsinki	September 7, 2009	
Faculty of Education	North America / South America	U.S.A	University of South Carolina	July 20, 1994	
School of Medicine	North America / South America	U.S.A	University of Tennessee Center for the Health Sciences	May 19, 1982	
		Jamaica	The University of the West Indies	February 25, 2002	
	Europe	Republic of Slovenia	Faculty of Medicine, University of Ljubljana	November 28, 2014	
	East Asia	People's Republic of China	China Medical University	October 25, 2005	
Graduate School of Health Sciences	North America / South America	U.S.A	School of Nursing and Dental Hygiene, University of Hawai'i at Manoa	August 29, 2019	
	Europe	Kingdom of Sweden	Centre for Radiation Protection Research, Stockholm University	March 6, 2013	
	East Asia	Taiwan	College of Nursing, Taipei Medical University	September 26, 2019	
Faculty of Agriculture and Life Science	Europe	Russian Federation	Botanical Garden - Institute Far Eastern Branch Russian Academy of Sciences	February 20, 2015	
	East Asia	People's Republic of China	College of Horticulture, ShenYang Agricultural University	November 3, 2015	
			Xishuangbanna Tropical Botanical Garden, Chinese Academy of Sciences	October 29, 2018	
		Republic of Korea	College of Agriculture and Life Sciences, Kangwon National University	November 5, 2018	
			The College of Agriculture, Life & Environment Sciences, Chungbuk National University	December 6, 2018	
	Taiwan	College of Agriculture and Natural Resources, National Chung Hsing University	November 15, 2017		
	Southeast Asia	Kingdom of Thailand	Faculty of Agriculture, Kasetsart University	May 27, 2015	
			School of Energy and Environment, University of Phayao	August 6, 2018	
			School of Management and Information Sciences, University of Phayao	August 6, 2018	
	South Asia	India	Faculty of Science, Alagappa University	August 7, 2018	
			Faculty of Arts, Alagappa University	August 7, 2018	
			Faculty of Agriculture, Hajee Mohammad Danesh Science & Technology University	November 24, 2018	
	Institute of Radiation Emergency Medicine	Europe	Republic of Hungary	University of Pannonia, Faculty of Engineering, Institute of Radiochemistry and Radioecology	March 18, 2013
French Republic			Faculty of Physics and Engineering, University of Strasbourg	October 30, 2019	
East Asia		People's Republic of China	Department of Physics and Electronic Information Science, Hengyang Normal University	November 11, 2014	
			National Institute for Radiological Protection, China CDC	May 2, 2016	
			School of Radiation Medicine and Protection and Radiation Medicine and Interdisciplinary Sciences, Soochow University	May 21, 2018	
			Institute of Radiation Medicine, Fudan University	March 12, 2019	
			Korea Institute of Radiological and Medical Sciences (KIRAMS)	January 21, 2013	
Republic of Korea		Dongnam Institute of Radiological & Medical Sciences (DIRAMS)	June 14, 2016		
Southeast Asia		Kingdom of Thailand	Faculty of Science, Kasetsart University	July 11, 2018	
			Faculty of Engineering, Chulalongkorn University	December 21, 2018	
		Socialist Republic of Viet Nam	Institute for Nuclear Science and Technology, Vietnam Atomic Energy Institute	November 22, 2013	
South Asia		India	The Philippine Nuclear Research Institute	June 30, 2015	
			Centre for Advanced Research in Environmental Radioactivity (CARER), Mangalore University	August 19, 2019	
			Atomic Energy Centre (AEC), Dhaka, Bangladesh Atomic Energy Commission	October 15, 2018	
Institute of Regional Innovation		East Asia	People's Republic of China	School of Chemical Engineering, Sichuan University	June 8, 2016
		Southeast Asia	Kingdom of Thailand	Faculty of Science, Chulalongkorn University	January 30, 2018
			Republic of Indonesia	Faculty of Mathematic and Natural Sciences Department of Chemistry Sriwijaya University	February 13, 2019

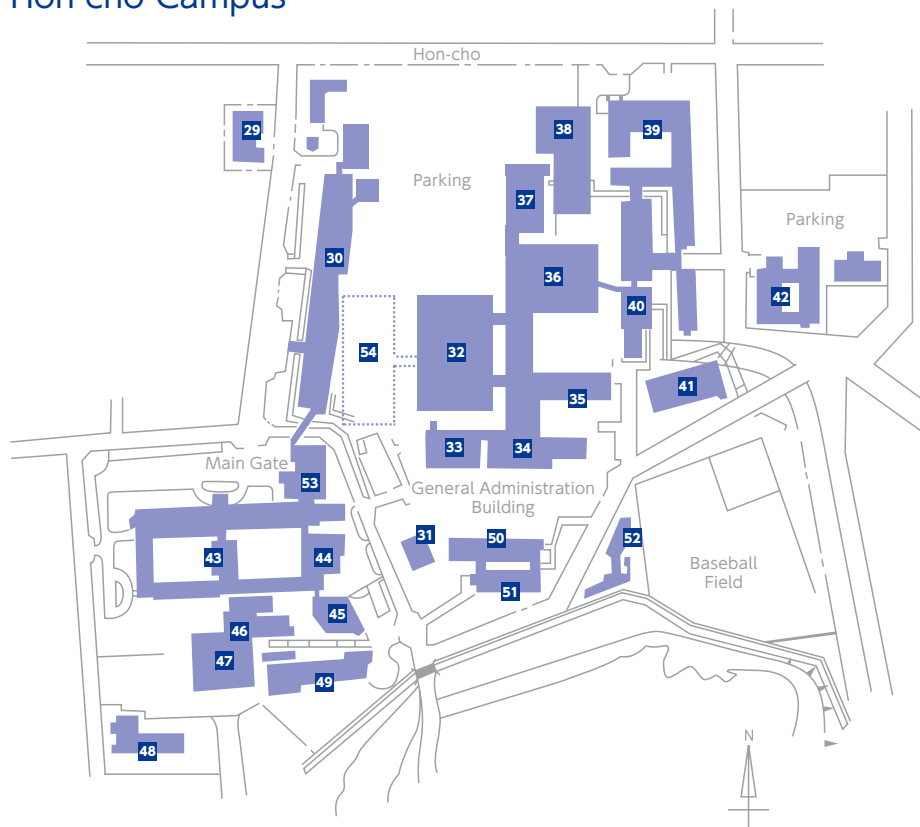


Bunkyo-cho Campus

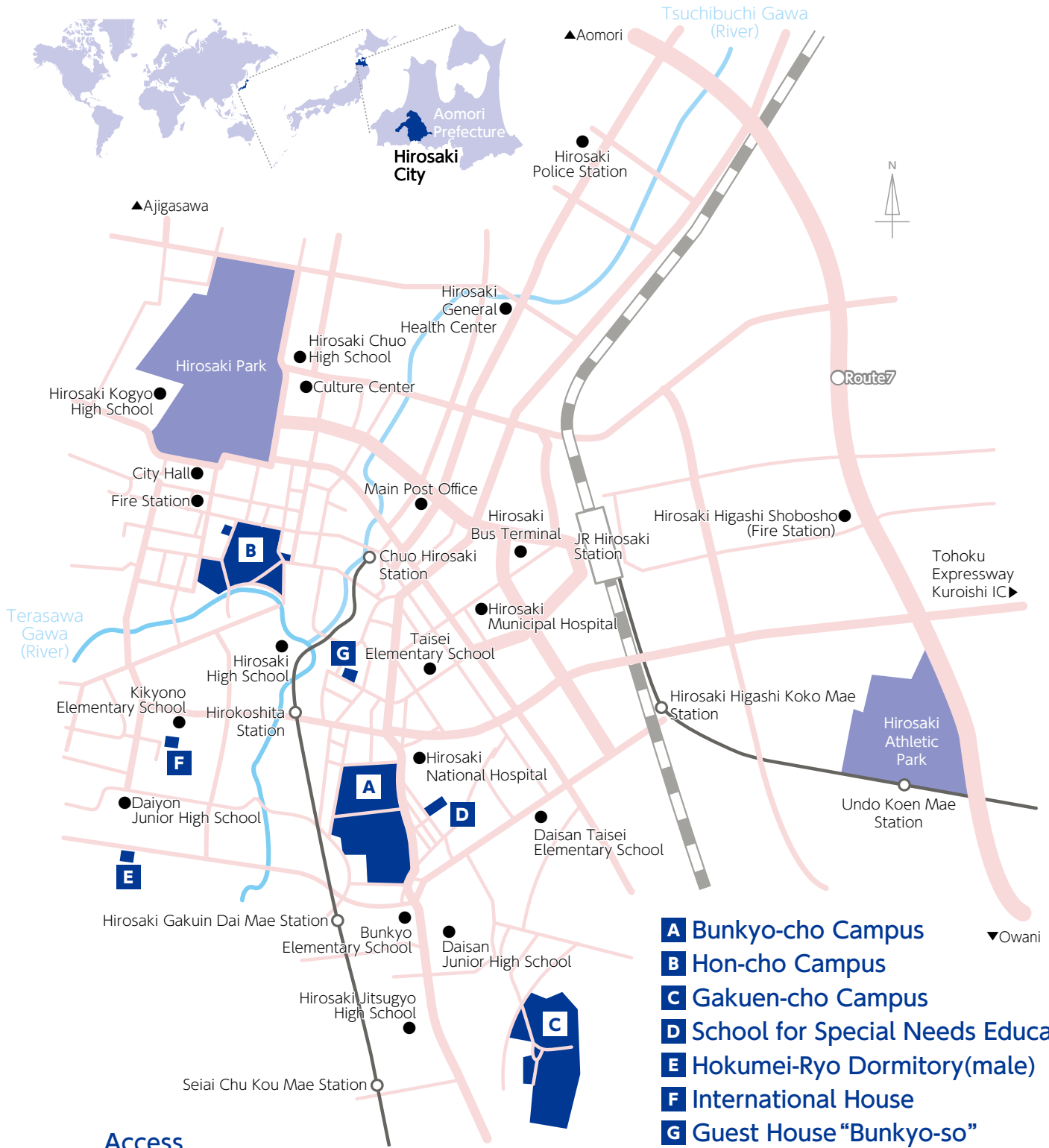


- 01 Hirosaki Higher School Foreign Lecturer Residence (Hirodai Cafe)
- 02 Information (Guard Gate)
- 03 Administration Bureau
- 04 Health Administration Center
- 05 50th Anniversary Auditorium
- 06 General Education Building
- 07 Faculty of Humanities and Social Sciences Building
- 08 University Library
- 09 University Center 10 Commons
- 11 Faculty of Education Building
- 12 University Museum
- 13 Center for Education Research and Practice
- 14 Training Camp Center
- 15 Gymnasium No.1 16 Kyudo Hall
- 17 Earthquake and Volcano Observatory
- 18 Information Management Headquarters, Information Technology Center
- 19 Gene Research Center
- 20 60th Anniversary Auditorium 'Collabo HiroDai'
- 21 Collaboration Center
- 22 Faculty of Science and Technology Building No.1
- 23 Faculty of Science and Technology Building No.2
- 24 Faculty of Agriculture and Life Science Building
- 25 Greenhouse
- 26 Gymnasium No.2 27 Martial Arts Hall
- 28 Building for Extracurricular Activities

Hon-cho Campus



- 29 Medical Communications Center
- 30 Clinical Research Building
- 31 Lecture Building
- 32 Outpatient Clinic
- 33 Energy Center
- 34 First Ward
- 35 Second Ward
- 36 Central Clinical Service Building
- 37 Advanced Emergency and Disaster Medical Center
- 38 Multi-storey Car Parking
- 39 Graduate School of Health Sciences, School of Clinical Psychological Science
- 40 Multidiscipline Medicine Building Institute of Radiation Emergency Medicine
- 41 Gymnasium 42 Lodging for Nurses
- 43 Graduate School of Medicine
- 44 Hirosaki University Medical Branch Library
- 45 Foundation Lecture Building
- 46 Radioisotope Laboratory
- 47 Extracurricular Activity Equipment Storage Area
- 48 Shared Use Institution, Hon-cho Campus Center for Advanced Medical Research
- 49 Institute of Brain Science
- 50 Student Support Center 1 (Learning Center)
- 51 Hirodai Nursery
- 52 Student Support Center 2 (Student Friendship Center)
- 53 Innovation Center for Health Promotion
- 54 New ward under construction



Access

Tokyo	Tohoku Shinkansen (3h10m)	Shin Aomori Station	JR Super Express (30m)	100yen bus (Dotemachi Line) (15m)	University Hospital Mae	Hon-cho Campus
	Airplane (1h20m)	Aomori Airport	Konan Bus (Local Bus) (55m)	*6 Komagoshi Line (15m)		
Sapporo	JR Super Express (3h30m)	Shin Hakodate Hokuto Station	Hokkaido Shinkansen (1h10m)	Shin Aomori Station	JR Super Express (30m)	Bunkyo-cho Campus
	Airplane (45m)			Aomori Airport	Konan Bus (Local Bus) (55m)	
Morioka	Highway Bus (Yodel) (2h15m)					
Sendai	Highway Bus (Castle) (4h20m)					

*Chuo Exit Busstop



National University Corporation Hirosaki University

1 Bunkyo-cho, Hirosaki, Aomori, 036-8560, Japan

URL <https://www.hirosaki-u.ac.jp/en/>

Designed by SEITO Shinichiro, Under the Supervision of Professor ISHIKAWA Yoshiro
Faculty of Education, Hirosaki University



Hirosaki University
website



HIROSAKI
UNIVERSITY