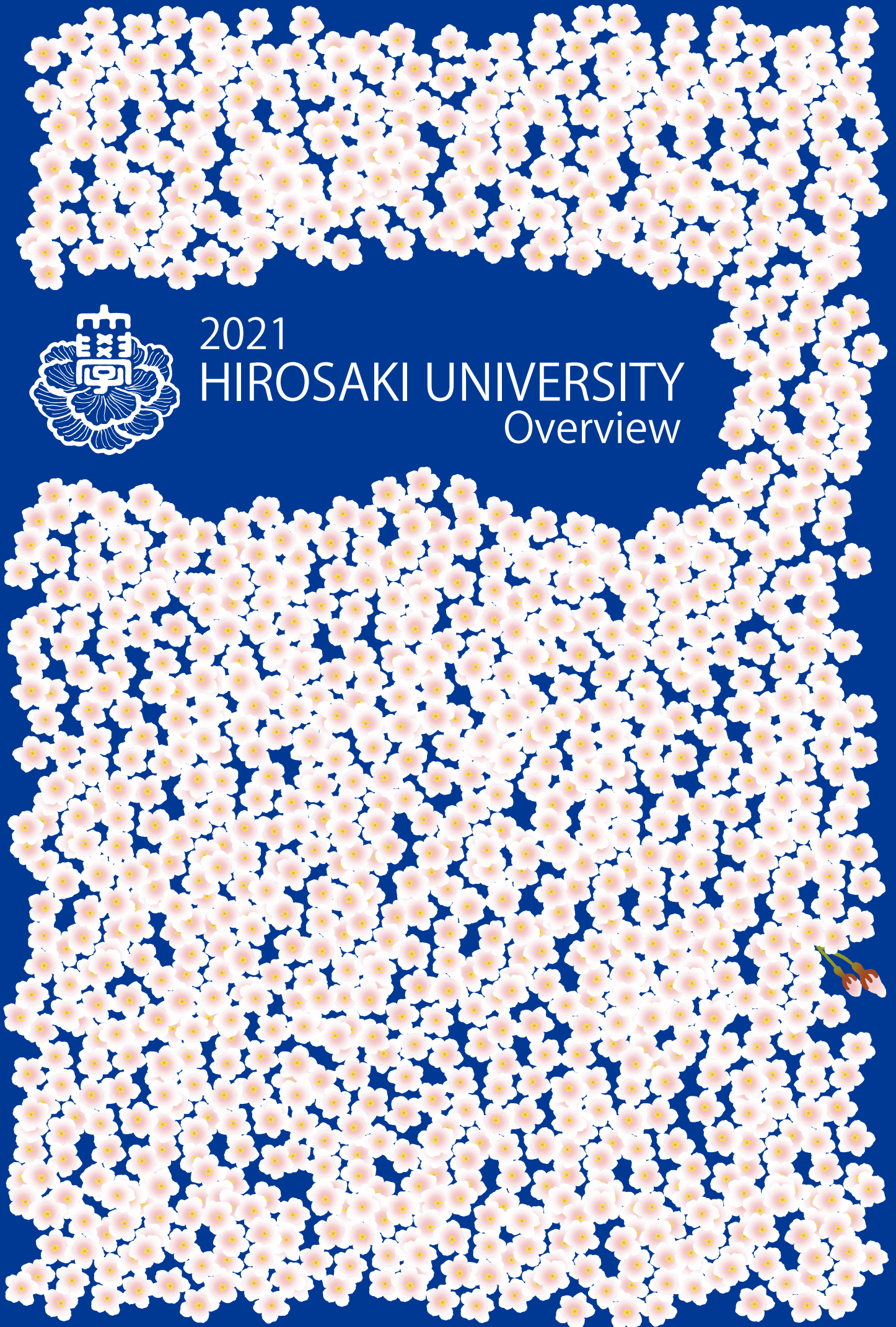




2021
HIROSAKI UNIVERSITY
Overview



IDEALS AND PRINCIPLES • FUNDAMENTAL GOALS

Ideals and Principles

Hirosaki University has, in the spirit of the Fundamental Law of Education, established the following institutional goals: 1) to incorporate extensive bodies of knowledge into our campus culture; 2) to engage in the teaching of and research in a broad range of specialized scholarly fields; 3) to educate persons of character and integrity who can contribute to human culture.

Fundamental Goals: The Hirosaki University Vision of the Future

Hirosaki University, in its role as one of the comprehensive public universities in the north of Japan, has set as its foundation a commitment to serve as a core actor for regional revitalization. Taking this commitment into consideration, we established four strategic areas of concentration, renewable energy, the environment, radiation emergency medicine, and food, positioning them as objectives in the second medium-term plan. We have subsequently integrated these strategic and related themes into our research and educational programs. We have also made great headway in establishing ties with local organizations and governmental bodies. Moreover, as we enter the third round of medium-term objectives, we will continue to contribute to local society through human resource development and the fostering of innovation.

Hirosaki University has recently implemented a university-wide reorganization. We have 1) strengthened human resource development programs in the fields of science, technology and

agriculture that contribute to innovation, 2) made qualitative improvements in the teacher training program for elementary school teachers, and 3) built up both the educational and research arms of the graduate schools. Moreover, among our third medium-term objectives, we will continually review the themes and reevaluate and reform the system by which research is implemented in the original four core areas of concentration. Furthermore, although we have independently implemented university governance reforms through wide-ranging on-campus discussion and debate, we must continue to verify and reexamine these outcomes. We must do so in order to enhance the functioning of and to implement the reforms instituted under the management system that was introduced after the establishment of the national university corporation system.

Ultimately, our mission is to live up to our slogan of “communicating to the world; creating with our community”

Education • Research Organization

With the successful completion of the above-mentioned reorganization of the educational and research system, we must now turn to meet the challenges of globalization, low birthrates and an aging society as well as the need for innovation creation, challenges not only to Hirosaki University and the surrounding region, but to the nation as a whole. Moreover, in the face of recent scientific and technological advances, there has been a shift towards an emphasis on post-graduate education, which has inevitably come to serve as the linchpin of higher education. We are therefore reexamining our postgraduate educational and research programs, while remaining conscious of the continuity that must exist between undergraduate and postgraduate study.

Educational Reform

Hirosaki University, in its role as a core actor in the regional revitalization process, has a major responsibility to train future local leaders who can address and resolve regional issues from a truly global perspective. However, in order to take advantage of the specialized knowledge and technological know-how of our faculty and other researchers, we must first cultivate the basic knowledge and cultural understanding that serve as the foundation of advanced study. In this sense, the role of liberal arts education in the formation of harmonious human relations is critical. Moreover, in order to best navigate the educational reform we find ourselves a part of, we must reinforce our educational infrastructure, make improvements in the way we select students for admission, tighten performance evaluation, strengthen active learning programs, promote learning that is designed by students themselves, and strengthen the student support system.

Promotion of Research

We consider the promotion of basic research, research that is recognized internationally as well as research that contributes to regional revitalization to be essential elements of our mission as a university. With this in mind, we offer support to young researchers, promote international research exchange, and encourage the securing of competitive research funds and the creation and utilization of intellectual property.

In addition, we will continue to promote research in the areas we have designated as strategic areas of concentration: renewable energy, the environment, radiation emergency medicine, and food.

Regional Cooperation and Regional Contribution

To fulfill our role as a core actor in the regional revitalization process, we will continue to strengthen our ties with local governments, companies and citizens groups. With respect to education, we are incorporating regional issues into our curriculum through active-learning and other pedagogical approaches that encourage students to think about and offer solutions to local and regional issues. As far as research is concerned, we are contributing to innovation creation through joint research projects with the local community. In addition, we are cooperating with other institutions of higher learning in the region, and are actively involved in joint educational and research activities that contribute to regional revitalization.

Globalization

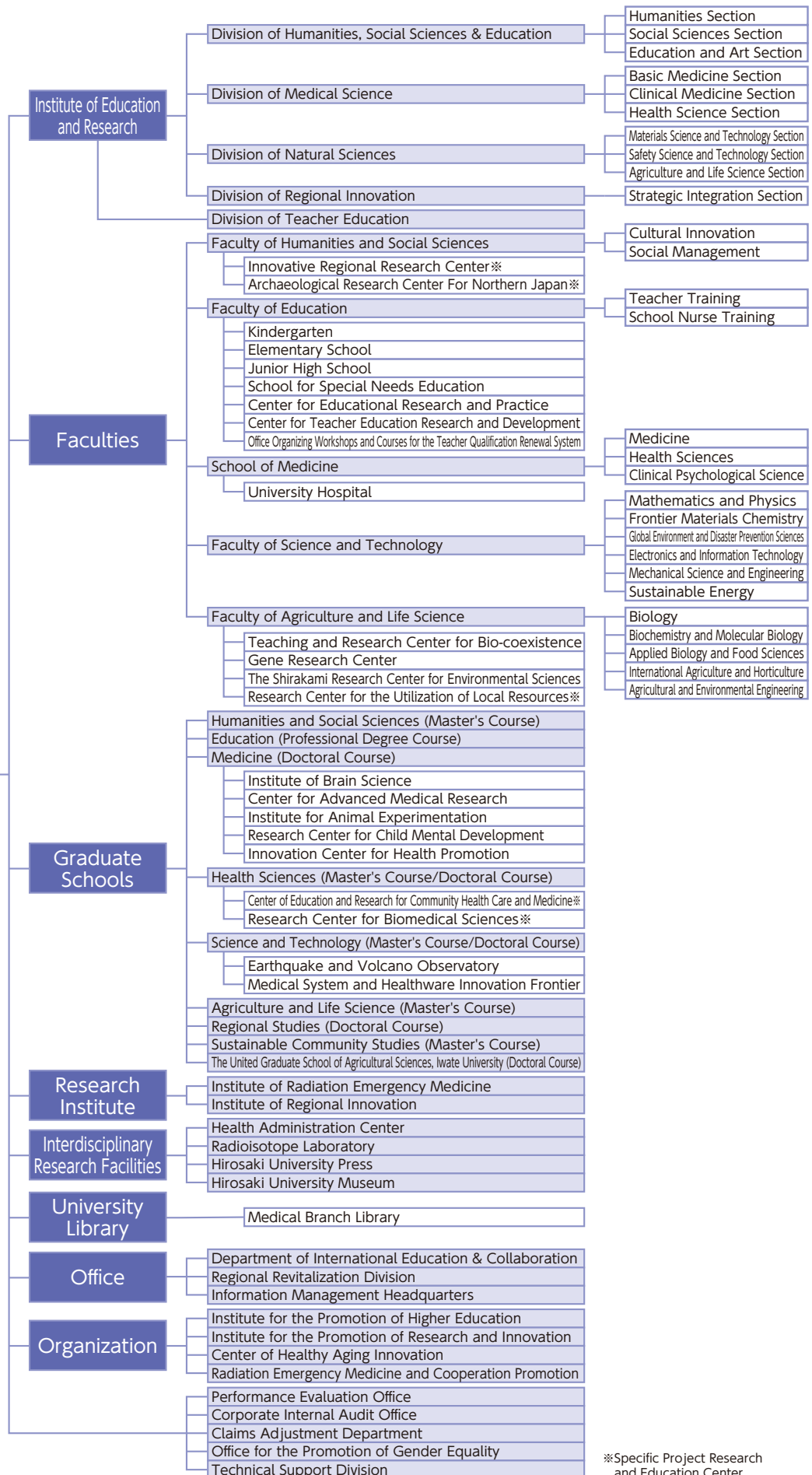
International academic exchange and the fostering of a global perspective has become an important issue for local communities as well as for the nation as a whole. Therefore, we here at Hirosaki University recognize the need to accelerate our own globalization. In addition to the general strengthening of education and research programs, we are working to enhance the internationalization and diversity of our campus as well as to offer support to students who wish to gain overseas experience.

Management

In order to resolve outstanding issues and realize our institutional goals, we will continue to seek university-wide consensus under the leadership of the president. Moreover, given the challenges facing national university corporations throughout the country, we must continue to constantly review and reevaluate our management practices and foster a common awareness and sense of unity amongst the members of our university community.

ACADEMIC ORGANIZATION

Hirosaki University



※Specific Project Research and Education Center



Hirosaki University Logo

■ Established July 24, 2006

■ Concept: The university's logo takes cherry blossoms, for which Hirosaki City has great pride, as its motif. Blossoms representing each of five faculties are gathered together into one large blooming flower, facing the future. The circle in the center of the logo stands for the Earth, and expresses how graduates of Hirosaki University will make outstanding contributions to business and research, helping to make the world go round. In addition, the five different colors represent the different faculties: red for Medicine, orange for Education, green for Agriculture & Life Science, blue for Science & Technology, and purple for Humanities and Social Sciences. The image of the flowers scattered around the Earth like satellites also carries the meaning of Hirosaki University becoming a beacon for the region. Taken as a whole, the logo was designed to have a colorful, modern feel, brimming with freshness, vigor, and the energy of an enjoyable campus life.

President, Executive Director, Auditor

As of May 1, 2021

President		Executive Director and Vice President		Auditor		Assistant to the President		Vice Executive Director		Total		Grand Total
M	F	M	F	M	F	M	F	M	F	M	F	
1		4	1	1	1(1)	3(2)		4(3)		13(5)	2(1)	15(6)

Note: Part-time positions are shown in () and are included in the total number.

Note: For Assistants to the President and Vice Executive Directors, numbers include cases where one person holds more than one position.

Divisions	Professors		Associate Professors		Lecturers		Assistant Professors		Research Associates		Teachers of Attached School		Total		Other Staff		Total		Grand Total
	M	F	M	F	M	F	M	F	M	F	M	F	M	F	M	F	M	F	
The Number of Present Employees	189	23	175	37	67	17	154	66	37	19	45	49	667	211	372	773	1,039	984	2,023
Administration Bureau													0	0	114	51	114	51	165
Faculty of Humanities and Social Sciences	19	5	25	6	3	1	4	2					51	14	4	6	55	20	75
Faculty of Education	30	4	25	8	8	4	3	2			45	49	111	67	7	8	118	75	193
Graduate School of Medicine	39	2	29	4	16	1	57	24	13	4			154	35	13	5	167	40	207
Graduate School of Health Sciences	22	10	13	6	6	5	15	12	2	1			58	34	6	6	64	40	104
University Hospital			8	1	30	3	45	18	21	14			104	36	184	669	288	705	993
Graduate School of Science and Technology	38	1	36	3	3		12	1	1				90	5	14	8	104	13	117
Faculty of Agriculture and Life Science	28	1	29	3			13	1					70	5	15	7	85	12	97
Graduate School of Regional Studies	2		2										4	0			4	0	4
Institute of Radiation Emergency Medicine	3		1				1	1					5	1	3		8	1	9
Institute of Regional Innovation	6		4					1					10	1	3	1	13	2	15
Health Administration Center	1			1		1							1	2		2	1	4	5
Radioisotope Laboratory													0	0	1	1	1	1	2
University Library													0	0	5	7	5	7	12
Department of International Education & Collaboration			1	2				1					1	3	3	2	4	5	9
Office for Regional Revitalization			1										1	0			1	0	1
Institute for the Promotion of Higher Education Information			1	3	1		3	1					5	4			5	4	9
Center of Healthy Aging Innovation	1					2	1	1					2	3			2	3	5
Office for the Promotion of Gender Equality								1					0	1			0	1	1

Note: Number for staff working in the Corporate Internal Audit Office are included in the number for the Administration Bureau.

Undergraduates

As of May 1, 2021

Faculties	Departments and Courses	Annual Admission Capacity	Transfer Student	Second year Student	Third year Transfer Capacity	Enrollment Capacity	Actual Enrollment																				
							Freshmen			Sophomores			Juniors			Seniors			5th year			6th year			Grand Total		
							M	F	Sub Total	M	F	Sub Total	M	F	Sub Total	M	F	Sub Total	M	F	Sub Total	M	F	Sub Total	M	F	Total
Humanities and Social Sciences	Cultural Innovation	110			440	34	84	118	48	69	117	33	84	117	51	80	131							166	317	483	
	Social Management	155			620	81	83	164	99	69	168	82	89	171	104	70	174							366	311	677	
	Total	265			1,060	115	167	282	147	138	285	115	173	288	155	150	305							532	628	1,160	
Humanities	Humanities and Cultural Studies							-			-			-	2	1	3							2	1	3	
	Social Science and Social System Studies							-			-			-	0	1	1							0	1	1	
	Economies and Commercial Sciences							-			-			-	4	0	4							4	0	4	
	Total				0	0	0	0	0	0	0	0	0	0	6	2	8							6	2	8	
Education	Teacher Training Division	140			580	51	94	145	70	81	151	70	87	157	79	94	173							270	356	626	
	School Nurse Training Division	20			80	0	22	22	0	22	22	0	21	21	0	20	20							0	85	85	
	Community Education Training Division							-			-			-	2	0	2							2	0	2	
	Total	160			660	51	116	167	70	103	173	70	108	178	81	114	195							272	441	713	
Medicine	Medicine	112	20		772	75	42	117	84	55	139	67	63	130	81	72	153	71	62	133	94	51	145	472	345	817	
	Health Sciences	200		30	860	58	152	210	68	136	204	65	143	208	67	145	212							258	576	834	
	Clinical Psychological Science	10			20	3	8	11	4	6	10			-			-							7	14	21	
	Total	322	20	30	1,652	136	202	338	156	197	353	132	206	338	148	217	365	71	62	133	94	51	145	737	935	1,672	
Science and Technology	Mathematics and Physics	78		2	316	73	7	80	75	7	82	66	9	75	79	8	87							293	31	324	
	Frontier Materials Chemistry	52		1	210	36	16	52	41	11	52	35	17	52	50	11	61							162	55	217	
	Global Environment and Disaster Prevention Sciences	65		2	264	48	18	66	51	14	65	54	14	68	47	24	71							200	70	270	
	Electronics and Information Technology	55		2	224	55	4	59	56	2	58	47	10	57	55	9	64							213	25	238	
	Mechanical Science and Engineering	80		2	324	75	9	84	73	7	80	72	8	80	80	6	86							300	30	330	
	Sustainable Energy	30		1	122	27	3	30	26	5	31	20	7	27	27	5	32							100	20	120	
	Earth and Environmental Sciences							-			-			-	3	0	3							3	0	3	
	Intelligent Machines and System Engineering							-			-			-	1	0	1							1	0	1	
Total	360		10	1,460	314	57	371	322	46	368	294	65	359	342	63	405							1,272	231	1,503		
Agriculture and Life Science	Biology	40			160	26	16	42	31	12	43	29	12	41	31	12	43							117	52	169	
	Biochemistry and Molecular Biology	40			160	16	25	41	21	18	39	17	24	41	31	19	50							85	86	171	
	Applied Biology and Food Sciences	55			220	19	36	55	24	34	58	31	27	58	30	28	58							104	125	229	
	International Agriculture and Horticulture	50			200	29	21	50	28	24	52	30	23	53	29	25	54							116	93	209	
	Agriculture and Environmental Engineering	30			120	24	6	30	23	8	31	26	4	30	32	7	39							105	25	130	
	Total	215			860	114	104	218	127	96	223	133	90	223	153	91	244							527	381	908	
Grand Total	1,322	20	40	5,692	730	646	1,376	822	580	1,402	744	642	1,386	885	637	1,522	71	62	133	94	51	145	3,346	2,618	5,964		

Graduate Schools

As of May 1, 2021

Classification			Annual Admission Capacity	Enrollment Capacity	Actual Enrollment														
					Freshmen			Sophomores			Juniors			Seniors			Grand Total		
					M	F	Sub Total	M	F	Sub Total	M	F	Sub Total	M	F	Sub Total	M	F	Total
Humanities and Social Sciences	Master's Course	Humanities and Social Sciences	16	32	10	8	18	7	4	11						17	12	29	
		Cultural Studies					-	4	6	10						4	6	10	
		Applied Social Sciences					-	1	1	2						1	1	2	
		Total	16	32	10	8	18	12	11	23						22	19	41	
Education	Master's Course	School Education					-	3	3	6					3	3	6		
		Curriculum Studies	18	36	12	8	20	8	4	12					20	12	32		
Medicine	Doctoral Course	Medical Science	60	240	43	26	69	34	12	46	35	18	53	71	30	101	183	86	269
Health Sciences	Master's Course	Health Sciences	30	60	20	12	32	25	13	38					45	25	70		
	Doctoral Course	Health Sciences	12	36	10	3	13	10	3	13	18	12	30		38	18	56		
Science and Technology	Master's Course	Science and Technology	120	240	112	10	122	97	12	109					209	22	231		
	Doctoral Course	Advanced Materials Science and Technology	6	18	1	1	2	0	0	0	5	0	5		6	1	7		
		Safety Science and Technology	6	18	7	1	8	3	4	7	7	4	11		17	9	26		
	Total	12	36	8	2	10	3	4	7	12	4	16		23	10	33			
Agriculture and Life Science	Master's Course	Agriculture and Life Sciences	50	100	26	19	45	33	14	47				59	33	92			
Sustainable Community Studies	Master's Course	Community Renovation	15	30	6	6	12	7	6	13				13	12	25			
		Industry Development Sciences	15	30	6	8	14	6	6	12				12	14	26			
		Total	30	60	12	14	26	13	12	25				25	26	51			
Regional Studies	Doctoral Course	Regional Studies	6	18	5	0	5	4	2	6	15	12	27		24	14	38		
Grand Total			354	858	258	102	360	242	90	332	80	46	126	71	30	101	651	268	919

The United Graduate School of Agricultural Sciences, Iwate University (Doctoral Course)

The current figure indicates the number of students who belong to Hirosaki University (supervising educators). As of May 1, 2021

Classification			Annual Admission Capacity	Enrollment Capacity	Actual Enrollment														
					Freshmen			Sophomores			Juniors			Seniors			Grand Total		
					M	F	Sub Total	M	F	Sub Total	M	F	Sub Total	M	F	Sub Total	M	F	Total
The United Graduate School of Agricultural Sciences, Iwate University (Doctoral Course)			24	72	6	3	9	7	3	10	6	4	10		19	10	29		

Attached School (Faculty of Education)

As of May 1, 2021

Classification		Enrollment Capacity	Classes	Actual Enrollment							
				1st Year	2nd Year	3rd Year	4th Year	5th Year	6th Year	Total	
Kindergarten		90	4	(3-year-old) 14		(4-year-old) 15		(5-year-old) 22		51	
Elementary School		607	20	69	87	102	91	79	102	530	
Junior High School		458	14	126	164	163				453	
School for Special Needs Education	(Elementary)	18	3	(Lower) 5		(Intermediate) 6		(Higher) 5		16	
	(Junior High)	18	3	6	6	6				18	
	(Senior High)	24	3	4	7	8				19	
Total		1,215									1,087

International Students

As of May 1, 2021

Classification		Faculties, etc.	Country / Region											Total			
			People's Republic of China	Republic of Korea	Kingdom of Thailand	Malaysia	Republic of Indonesia	Socialist Republic of Viet Nam	People's Republic of Bangladesh	U.S.A.	Federal Republic of Nigeria	India	Republic of Uzbekistan		Republic of Cameroon		
Undergraduates	Private Regular Students	Humanities and Social Sciences	12			2		4									18
		Medicine	1														1
		Science and Technology	7			2											9
		Agriculture and Life Science	5	1		1											7
	Private Research Students	Humanities and Social Sciences	13														13
		Education	6														6
		Health Sciences	1														1
	Students funded by the Japanese Government (※MEXT) Teacher Training Students	Education										1					1
	Graduates	Students funded by the Japanese Government (※MEXT) Regular Scholarship Students	Health Sciences													1	1
			Science and Technology			2											2
Agriculture and Life Science									1							1	
The United Graduate School of Agriculture Sciences									2				1			3	
Private Regular Students		Humanities and Social Sciences	16								1						17
		Education	1														1
		Medicine	6														6
		Health Sciences			2		1										3
		Science and Technology	18														18
		Agriculture and Life Science	7			1				1							9
		Sustainable Community Studies	21							1							22
		Regional Studies	6		1												7
The United Graduate School of Agriculture Sciences		3							1			1				5	
Students funded by the Japanese Government (※MEXT) Research Students	Science and Technology					1										1	
Total			123	1	5	6	2	4	6	1	1	1	1	1	1	152	

※MEXT:Ministry of Education, Culture, Sports, Science and Technology

International Academic Exchange Agreements (University-wide Agreements)

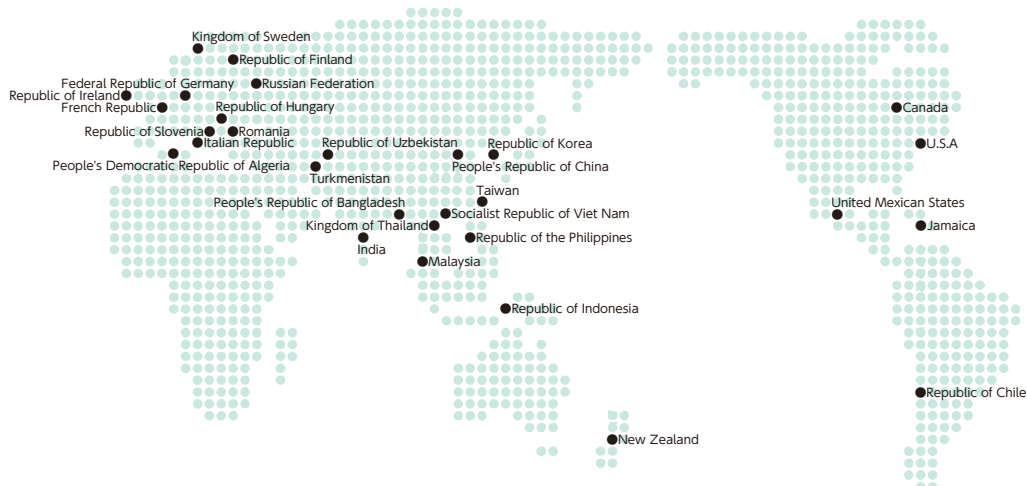
As of May 1, 2021

Country / Region		University	Date of Agreement
North America / South America	U.S.A	University of Tennessee at Martin	July 8, 1980
		University of Maine	June 26, 1997
		San Diego State University	March 19, 2001
		University of Hawai'i Community Colleges	October 30, 2017
	Canada	University of Saskatchewan	December 7, 2001
		Mount Royal University	June 1, 2005
		Thompson Rivers University	October 19, 2006
Republic of Chile	University of La Frontera	June 25, 2002	
United Mexican States	The Benito Juarez Autonomous University	May 13, 2016	
Europe	French Republic	University Bordeaux Montaigne	January 31, 1994
	Russian Federation	Far Eastern State Medical University	December 14, 1995
		M. V. Lomonosov Moscow State University	September 20, 2000
		Irkutsk State University	March 20, 2002
	Republic of Ireland	Environmental Protection Agency	June 13, 2019
	Romania	Hyperion University	September 11, 1998
		Alexandru Ioan Cuza University of Iasi	March 9, 2020
	Federal Republic of Germany	University of Trier	May 3, 1999
	Republic of Hungary	University of Debrecen	December 22, 2000
Italian Republic	University of Catania	March 27, 2018	
	University of Turin	November 11, 2020	
Oceania	New Zealand	University of Otago	September 20, 2000
		Auckland University of Technology	December 12, 2001
East Asia	People's Republic of China	Harbin Normal University	August 1, 1995
		Yanbian University	August 28, 2000
		Zhengzhou University	October 12, 2000
		Dalian University of Technology	December 28, 2009
		Xinjiang Institute of Engineering	September 23, 2016
		Qingdao Agricultural University	December 26, 2016
		Taiyuan University of Technology	April 19, 2017
		Shenyang University of Chemical Technology	November 20, 2017
		Central South University of Forestry and Technology	June 5, 2019
		Northeastern University	December 1, 2019
	Guangdong University of Technology	May 27, 2020	
	Republic of Korea	Nam Seoul University	June 1, 2001
		Kyungpook National University	July 11, 2001
		Pusan National University	December 12, 2001
		Kyonggi University	September 25, 2002
	Taiwan	National University of Kaohsiung	November 17, 2016
		Kainan University	November 18, 2016
		Mackay Medical College	October 30, 2017
		National Pingtung University	April 10, 2018
Chinese Culture University		February 19, 2019	
Southeast Asia	Kingdom of Thailand	Chiang Mai University	November 2, 2000
		Khon Kaen University	May 6, 2008
		Thammasat University	April 14, 2017
	Malaysia	Universiti Tunku Abdul Rahman	April 11, 2017
	Republic of Indonesia	Institut Teknologi Bandung	May 2, 2017
National Nuclear Energy Agency		October 3, 2017	
Socialist Republic of Viet Nam	An Giang University	July 2, 2018	
Central Asia	Republic of Uzbekistan	Tashkent State Agrarian University	September 19, 2016
		Samarkand Agricultural Institute/University	September 22, 2016
	Turkmenistan	Turkmen Agricultural University named after S.A.Nyyazov	March 28, 2019
Africa	People's Democratic Republic of Algeria	University of Science and Technology of Oran Mohamed Boudiaf	March 5, 2018

International Academic Exchange Agreements (Discipline-specific Agreements)

As of May 1, 2021

Note	Country		University	Date of Agreement	
Faculty of Humanities and Social Sciences	Europe	Republic of Finland	Ruralia Institute, University of Helsinki	September 7, 2009	
Faculty of Education	North America / South America	U.S.A	University of South Carolina	July 20, 1994	
School of Medicine	North America / South America	U.S.A	University of Tennessee Center for the Health Sciences	May 19, 1982	
		Jamaica	The University of the West Indies	February 25, 2002	
	Europe	Republic of Slovenia	Faculty of Medicine, University of Ljubljana	November 28, 2014	
	East Asia	People's Republic of China	China Medical University	October 25, 2005	
Graduate School of Health Sciences	North America / South America	U.S.A	School of Nursing and Dental Hygiene, University of Hawai'i at Manoa	August 29, 2019	
	Europe	Kingdom of Sweden	Centre for Radiation Protection Research, Stockholm University	March 6, 2013	
	East Asia	Taiwan	College of Nursing, Taipei Medical University	September 26, 2019	
	Southeast Asia	Kingdom of Thailand	Faculty of Associated Medical Sciences, Chiang Mai University	March 29, 2021	
Faculty of Agriculture and Life Science	East Asia	People's Republic of China	Xishuangbanna Tropical Botanical Garden, Chinese Academy of Sciences	October 29, 2018	
			College of Horticulture, ShenYang Agricultural University	April 26, 2021	
		Republic of Korea	College of Agriculture and Life Sciences, Kangwon National University	November 5, 2018	
			The College of Agriculture, Life & Environment Sciences, Chungbuk National University	December 6, 2018	
	Taiwan	College of Agriculture and Natural Resources, National Chung Hsing University	November 15, 2017		
		Kingdom of Thailand	School of Energy and Environment, University of Phayao	August 6, 2018	
	South Asia	India	School of Management and Information Sciences, University of Phayao	August 6, 2018	
			Faculty of Science, Alagappa University	August 7, 2018	
		People's Republic of Bangladesh	Faculty of Arts, Alagappa University	August 7, 2018	
			Faculty of Agriculture, Hajee Mohammad Danesh Science & Technology University	November 24, 2018	
Graduate School Regional Studies	East Asia	People's Republic of China	College of International Development and Global Agriculture, China Agricultural University	June 1, 2020	
Institute of Radiation Emergency Medicine	Europe	Republic of Hungary	University of Pannonia, Faculty of Engineering, Institute of Radiochemistry and Radioecology	March 18, 2013	
		French Republic	Faculty of Physics and Engineering, University of Strasbourg	October 30, 2019	
	East Asia	People's Republic of China	Department of Physics and Electronic Information Science, Hengyang Normal University	November 11, 2014	
			National Institute for Radiological Protection, China CDC	May 2, 2016	
			School of Radiation Medicine and Protection and Radiation Medicine and Interdisciplinary Sciences, Soochow University	May 21, 2018	
			Institute of Radiation Medicine, Fudan University	March 12, 2019	
			Institute of Nuclear Applied Technology, East China University of Technology	September 14, 2020	
		Republic of Korea	Korea Institute of Radiological and Medical Sciences	January 21, 2013	
	Southeast Asia	Kingdom of Thailand	Dongnam Institute of Radiological & Medical Sciences	June 14, 2016	
			Faculty of Science, Kasetsart University	July 11, 2018	
		Socialist Republic of Viet Nam	Faculty of Engineering, Chulalongkorn University	December 21, 2018	
			Institute for Nuclear Science and Technology, Vietnam Atomic Energy Institute	November 22, 2013	
	South Asia	Republic of the Philippines	The Philippine Nuclear Research Institute	June 30, 2015	
		India	Centre for Advanced Research in Environmental Radioactivity, Mangalore University	August 19, 2019	
			People's Republic of Bangladesh	Atomic Energy Centre, Dhaka, Bangladesh Atomic Energy Commission	October 15, 2018
	Institute of Regional Innovation	East Asia	People's Republic of China	School of Chemical Engineering, Sichuan University	June 8, 2016
				School of Chemistry and Environmental Engineering Shanxi Datong University	May 22, 2019
Southeast Asia		Republic of Indonesia	Faculty of Mathematic and Natural Sciences Department of Chemistry Sriwijaya University	February 13, 2019	

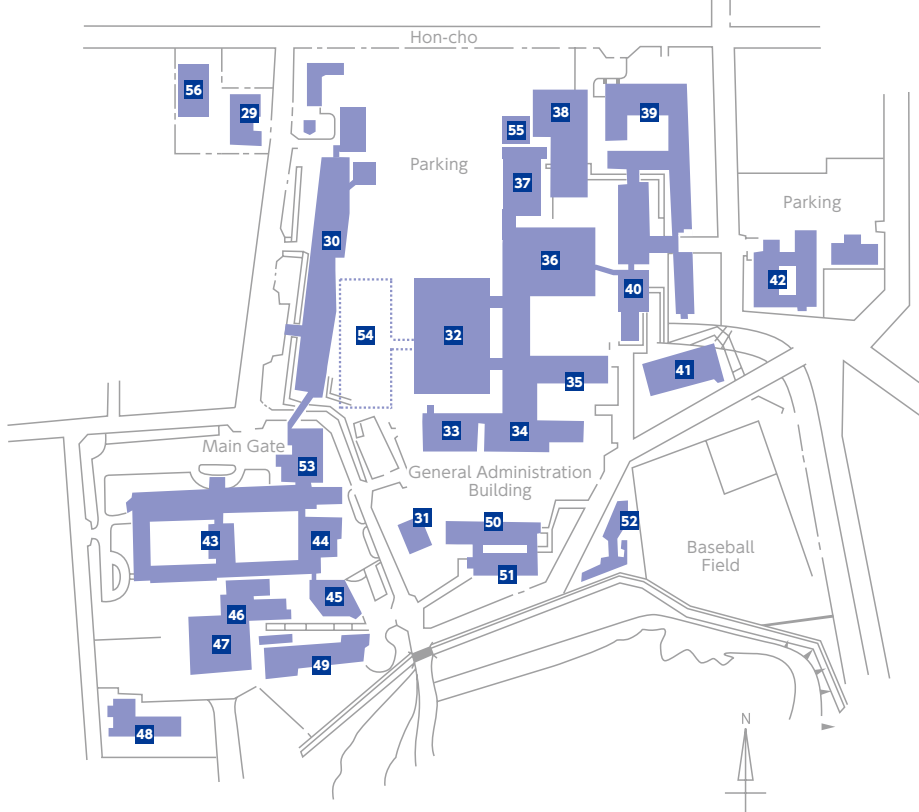


Bunkyo-cho Campus

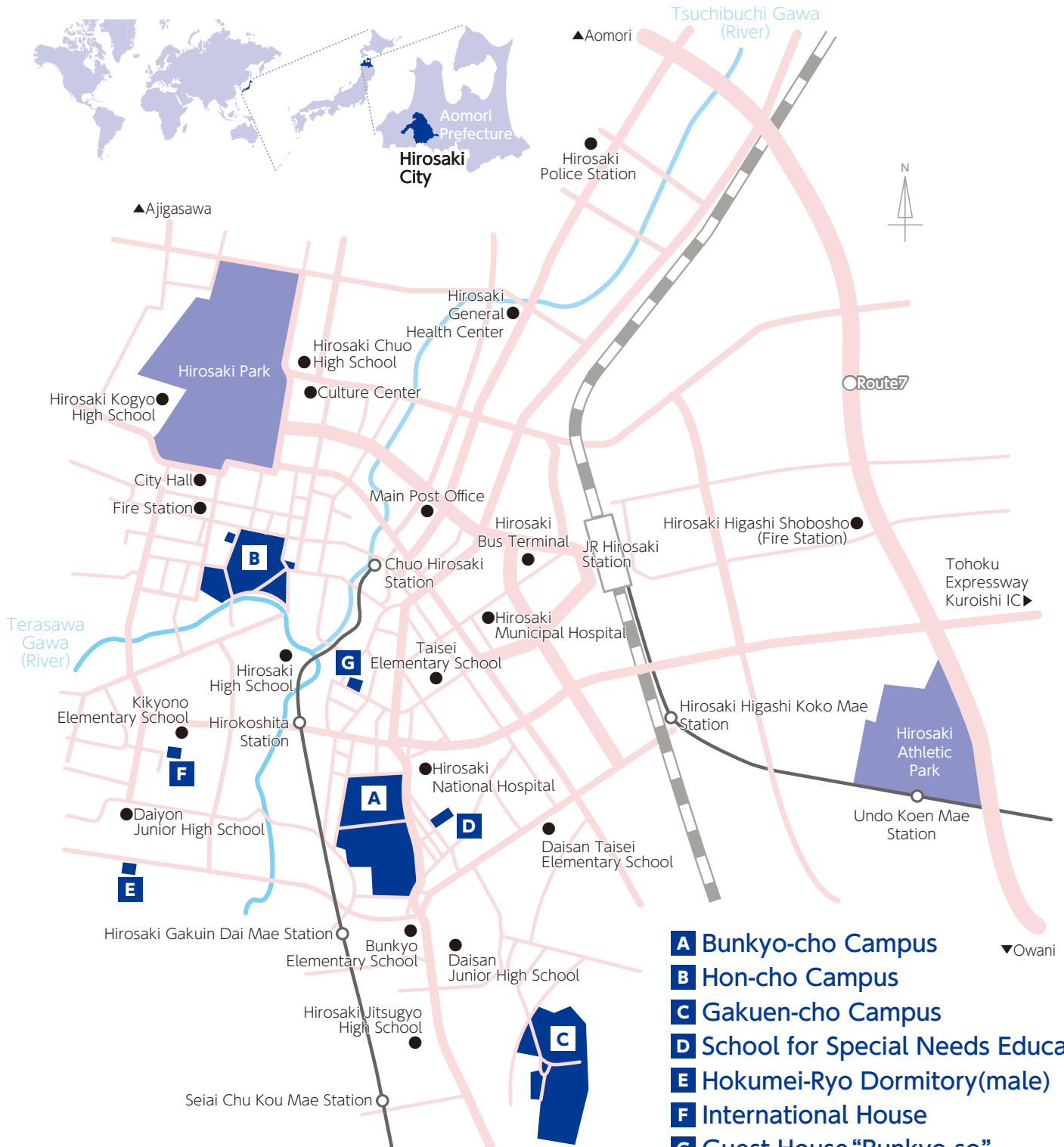


- 01 Hirosaki Higher School Foreign Lecturer Residence (Hirodai Cafe)
- 02 Information (Guard Gate)
- 03 Administration Bureau
- 04 Health Administration Center
- 05 50th Anniversary Auditorium
- 06 General Education Building
- 07 Faculty of Humanities and Social Sciences Building
- 08 University Library
- 09 University Center 10 Commons
- 11 Faculty of Education Building
- 12 University Museum
- 13 Center for Education Research and Practice
- 14 Training Camp Center
- 15 Gymnasium No.1 16 Kyudo Hall
- 17 Earthquake and Volcano Observatory
- 18 Information Management Headquarters, Information Technology Center
- 19 Gene Research Center
- 20 60th Anniversary Auditorium 'Collabo HiroDai'
- 21 Collaboration Center
- 22 Faculty of Science and Technology Building No.1
- 23 Faculty of Science and Technology Building No.2
- 24 Faculty of Agriculture and Life Science Building
- 25 Greenhouse
- 26 Gymnasium No.2 27 Martial Arts Hall
- 28 Building for Extracurricular Activities

Hon-cho Campus



- 29 Medical Communications Center
- 30 Clinical Research Building
- 31 Lecture Building
- 32 Outpatient Clinic
- 33 Energy Center
- 34 First Ward
- 35 Second Ward
- 36 Central Clinical Service Building
- 37 Advanced Emergency and Disaster Medical Center
- 38 Multi-storey Car Parking
- 39 Graduate School of Health Sciences, School of Clinical Psychological Science
- 40 Multidiscipline Medicine Building Institute of Radiation Emergency Medicine
- 41 Gymnasium 42 Lodging for Nurses
- 43 Graduate School of Medicine
- 44 Hirosaki University Medical Branch Library
- 45 Foundation Lecture Building
- 46 Radioisotope Laboratory
- 47 Extracurricular Activity Equipment Storage Area
- 48 Shared Use Institution, Hon-cho Campus Center for Advanced Medical Research
- 49 Institute of Brain Science
- 50 Student Support Center 1 (Learning Center)
- 51 Hirodai Nursery
- 52 Student Support Center 2 (Student Friendship Center)
- 53 Innovation Center for Health Promotion
- 54 New ward under construction
- 55 Triage Unit (temporary)
- 56 West Building



- A** Bunkyo-cho Campus
- B** Hon-cho Campus
- C** Gakuen-cho Campus
- D** School for Special Needs Education
- E** Hokumei-Ryo Dormitory(male)
- F** International House
- G** Guest House "Bunkyo-so"

Access

Tokyo	Tohoku Shinkansen (3h10m)		Shin Aomori Station	JR Super Express (30m)	100yen bus (Dotemachi Line) (15m)	University Hospital Mae	Hon-cho Campus
	Airplane (1h20m)		Aomori Airport	Konan Bus(Local Bus) (55m)	*6 Komagoshi Line (15m)	Hon-cho	
Sapporo	JR Super Express (3h30m)	Shin Hakodate Hokuto Station	Hokkaido Shinkansen (1h10m)	Shin Aomori Station	JR Super Express (30m)	Hirotsaki Station	Bunkyo-cho Campus
	Airplane (45m)		Aomori Airport	Konan Bus(Local Bus) (55m)	*8 Kinzoku Danchi/Sakuragaoka Line (15m)		
Morioka	Highway Bus (Yodel) (2h15m)				*3 Gakuen-cho Line (15m)	Hirotsaki Daigaku-Mae or Hirotsaki Nogakuseimei-kagakubu-Mae	Gakuen-cho Campus
Sendai	Highway Bus (Castle) (4h20m)				*3 Gakuen-cho Line (25m)	Gakuen-cho	

*Chuo Exit Busstop



National University Corporation Hirosaki University

1 Bunkyo-cho, Hirosaki, Aomori, 036-8560, Japan

URL <https://www.hirosaki-u.ac.jp/en/>

Designed by SEITO Shinichiro (Completed Graduate School of Education), Under the Supervision of ISHIKAWA Yoshiro (Former Professor, Faculty of Education, Hirosaki University)



Hirosaki University
website



HIROSAKI
UNIVERSITY