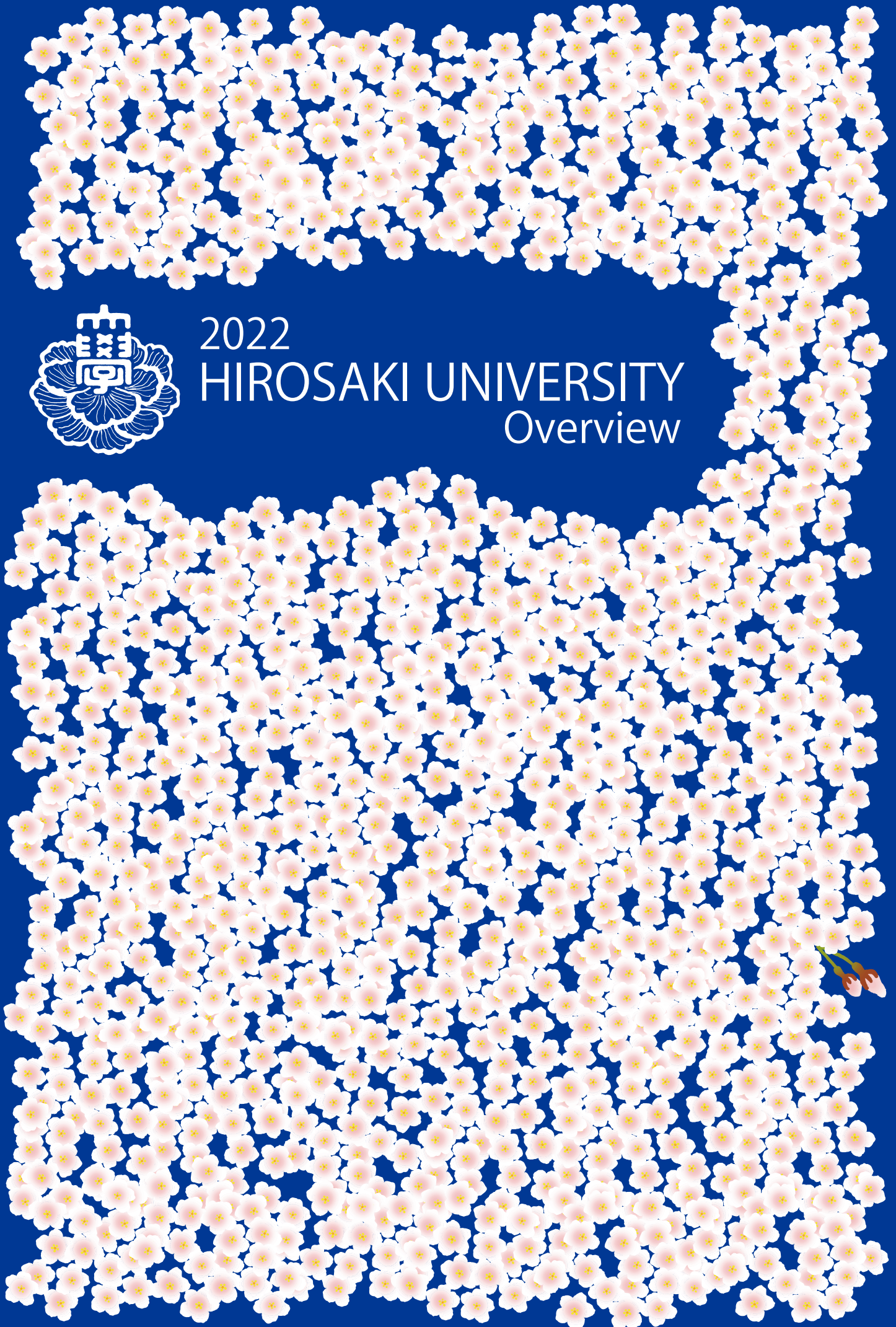




2022

HIROSAKI UNIVERSITY Overview



IDEALS AND PRINCIPLES • FUNDAMENTAL GOALS

Ideals and Principles

Hirosaki University has, in the spirit of the Basic Act on Education, established the following institutional goals: 1) to incorporate extensive bodies of knowledge into our campus culture; 2) to engage in the teaching of and research in a broad range of specialized scholarly fields; 3) to educate persons of character and integrity who can contribute to human culture.

Future Vision of Hirosaki University

Basic Principles

Hirosaki University, under the slogan of “Communicating with the world; Creating with our community,” has positioned the four themes of renewable energy, the environment, radiation emergency medicine, and food, which are also the “strengths” of the region, as priority areas for the university, and has promoted education and research as well as regional cooperation. In the 3rd Midterm Target Period, the University carried out innovative research that focused on regional characteristics and has also achieved solid results in education and research, internationalization, and administration. In the 4th Midterm Target Period, our basic policy will be to contribute to the revitalization of the region and drive the sustainable development of the entire regional society by creating more value to the “strengths” of the university that we have accumulated so far, while accurately taking into account the needs of the region and national policies.

In response to the major social changes triggered by the new COVID-19 pandemic, we will promote the creation of regional innovations, develop human resources, and based on our distinctive world-class research capabilities encourage research and development that will lead the way in social reform and for regional development.

In addition, we will accelerate our transformation into a “regional national university with distinctive characteristics” with the aim of further developing our university as a regional “knowledge” center. To this end, we will reorganize and strengthen the functions of our education and research organizations, reform our entrance examinations to cope with the declining birthrate, reform our education to make it more student-centered and promote new internationalization for life after COVID-19.

Furthermore, Japan has an ageing society, a low birthrate as well as a shortage of medical doctors in rural areas and these factors hinder the development of local regions. In Aomori Prefecture, where the population is ageing rapidly, the University has taken the lead in providing regional medical care, and will collaborate with local governments to establish a new, sustainable regional medical care delivery system that will serve as the foundation for regional development.

In order to realize the above initiatives, the University, under the leadership of the President with a medium- to long-term perspective, will implement bold and strategic management and administrative reforms unconstrained by conventional ways of thinking.

Educational Reform

In this new version of society, Society 5.0, emotional intelligence, communication skills, and creativity will become essential skills for the future. In addition to these skills, we will promote educational reforms to cultivate students’ knowledge across the humanities and sciences, so they can respond flexibly to the changes in the global society and engage in regional development.

Based on the starting point of learner-centered education, we will actively use Institutional Research (IR) for teaching and learning, introduce mathematical and data science education throughout the university, improve faculty development (FD) programs, make learning outcomes more visible to the students, and further strengthen various types of support for students.

In addition, we will strive to secure a diverse range of student applicants by examining admission methods based on the results of previous entrance examinations and by improving the publicity of the entrance examinations.

Promotion of Research

We will promote research that is done at the international level, opens up new fields of research, and protects and enriches the region. In this context, we will strengthen our research capabilities based on the following perspectives: support for young and female researchers, attain competitive research funds, create and put to use intellectual property, promote international joint research, and develop researchers at the University.

In addition, we will promote research in the following areas: the environment, energy, radiation, food and nature, extending the health and life expectancy of local residents, improving regional power, and utilizing cultural resources, which are positioned as important themes of the University.

Internationalization of the University

Internationalization is an essential element for universities as institutions of higher education. Aomori Prefecture, which is ambitiously developing a focus on “agriculture, forestry, and fisheries,” is also seeking talented individuals with a global perspective to expand exports of agriculture, forestry, and fisheries products abroad, and working together with the local community, the University aims to cultivate such global-minded individuals to drive these industries into the future.

In addition to bidirectional study-abroad programs between Hirosaki University and overseas partner universities (international exchange), we will work to improve the environment for international education and research through online collaboration to further internationalize the University in the post-COVID-19 era, and promote international initiatives linked to the local community.

Regional Cooperation and Regional Contribution

The University will promote education and research that are useful for solving regional issues and that can be implemented to improve society. To accomplish this, the University aims to cultivate students who will be able to lead the local regions forward into the future, promote regional establishments, and create new innovations that will benefit society and the local regions.

As “a university that supports the region and is supported by the region,” we will further strengthen our relationships with other universities, local governments, and industries that have been cultivated to date, and we will continue to play a leading and central role in promoting contributions to the region, thereby revitalizing the region and achieving regional development.

Administrative Management

The University aims to strengthen governance by moving forward in unison, with the President exercising leadership and the entire university having a common understanding of the university’s goals and plans regarding education, research, community contributions, advanced medical care, etc. From this point of view, we will continually review the University’s management and administration system, administrative organization, and methods of performing duties. Moreover, as a core part of management, the University will also continually aim to strengthen its financial situation.

Education/Research Organization

We will examine the reorganization of faculties, graduate schools, and research institutes implemented during the 3rd Midterm Target Period, and continually promote reforms to maintain the basic academic disciplines necessary as an institution of higher education and to improve the overall functionality of the University. As for the future reorganization of education and research organizations, we will also review the nature of the faculty organizations that support them.

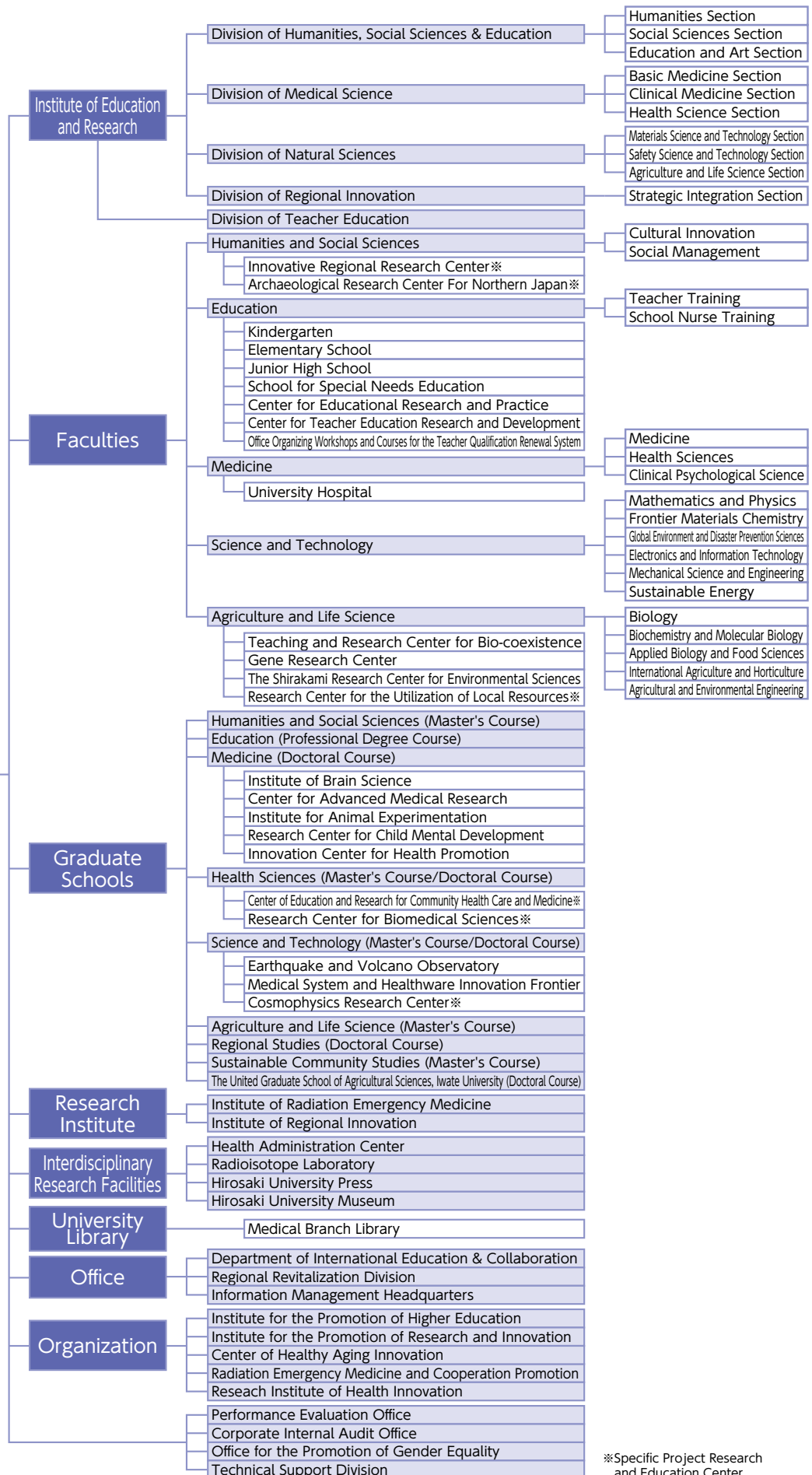
Medical Care

As a key contributor to the medical care in the region, the University will continue to provide specialized and advanced state-of-the-art medical care and promote medical support to remote areas by utilizing information and communication technology.

In addition, in order to foster various medical personnel including doctors, and to research and develop advanced medical technology through clinical research, we will strengthen our functions as an educational and research institution and further strengthen our management base to promote the facility improvement plan.

ACADEMIC ORGANIZATION

Hirosaki University



※Specific Project Research and Education Center



Hirosaki University Logo

■ Established July 24, 2006

■ Concept: The university's logo takes cherry blossoms, for which Hirosaki City has great pride, as its motif. Blossoms representing each of five faculties are gathered together into one large blooming flower, facing the future. The circle in the center of the logo stands for the Earth, and expresses how graduates of Hirosaki University will make outstanding contributions to business and research, helping to make the world go round. In addition, the five different colors represent the different faculties: red for Medicine, orange for Education, green for Agriculture & Life Science, blue for Science & Technology, and purple for Humanities and Social Sciences. The image of the flowers scattered around the Earth like satellites also carries the meaning of Hirosaki University becoming a beacon for the region. Taken as a whole, the logo was designed to have a colorful, modern feel, brimming with freshness, vigor, and the energy of an enjoyable campus life.

President, Executive Director, Auditor

As of May 1, 2022

President		Executive Director		Auditor		Assistant to the President		Vice Executive Director		Total		Grand Total
M	F	M	F	M	F	M	F	M	F	M	F	
1		5(1)	1	1	1(1)	3(2)		6(3)	1	16(6)	3(1)	19(7)

Note: Part-time positions are shown in () and are included in the total number.

Note: For Assistants to the President and Vice Executive Directors, numbers include cases where one person holds more than one position.

Divisions	Professors		Associate Professors		Lecturers		Assistant Professors		Research Associates		Teachers of Attached School		Total		Other Staff		Total		Grand Total
	M	F	M	F	M	F	M	F	M	F	M	F	M	F	M	F	M	F	
The Number of Present Employees	193	27	163	38	66	13	160	66	44	21	41	50	667	215	372	780	1,039	995	2,034
Administration Bureau													0	0	118	50	118	50	168
Faculty of Humanities and Social Sciences	18	6	27	5	1		7	3					53	14	4	6	57	20	77
Faculty of Education	30	5	25	9	6	3	7	2			41	50	109	69	6	9	115	78	193
Graduate School of Medicine	39	2	27	4	18	2	56	22	17	4			157	34	14	5	171	39	210
Graduate School of Health Sciences	21	11	7	7	6	4	14	15	2	3			50	40	7	5	57	45	102
University Hospital			8	1	31	3	44	16	24	14			107	34	180	675	287	709	996
Graduate School of Science and Technology	43	1	30	3	3		14	1	1				91	5	13	10	104	15	119
Faculty of Agriculture and Life Science	27	2	30	1			12	1					69	4	13	8	82	12	94
Graduate School of Regional Studies	3		1										4	0			4	0	4
Institute of Radiation Emergency Medicine	3		2					1					5	1	3		8	1	9
Institute of Regional Innovation	6		4					2					10	2	3	1	13	3	16
Health Administration Center	1			1		1							1	2		2	1	4	5
Radioisotope Laboratory													0	0	1	1	1	1	2
University Library													0	0	7	6	7	6	13
Department of International Education & Collaboration			1	3				1					1	4	3	2	4	6	10
Regional Revitalization Division				1				1					1	1			1	1	2
Institute for the Promotion of Higher Education			1	3	1		4	1					6	4			6	4	10
Center of Healthy Aging Innovation	1												1	0			1	0	1
Radiation Emergency Medicine and Cooperation Promotion	1						1						2	0			2	0	2
Office for the Promotion of Gender Equality								1					0	1			0	1	1

Note: The number of staff working for the Corporate Internal Audit Office are included in the number working for the Administration Bureau.

Note: The number of staff working for the Graduate School of Sustainable Community Studies and the Graduate School of Regional Studies are included in the number working for the Faculty of Humanities and Social Sciences.

Undergraduates

As of May 1, 2022

Faculties	Departments and Courses	Annual Admission Capacity	Transfer Student Second Year	Third Year Transfer Student Capacity	Enrollment Capacity	Actual Enrollment																				
						Freshmen			Sophomores			Juniors			Seniors			5th year			6th year			Grand Total		
						M	F	Sub Total	M	F	Sub Total	M	F	Sub Total	M	F	Sub Total	M	F	Sub Total	M	F	Sub Total	M	F	Total
Humanities and Social Sciences	Cultural Innovation	110			440	39	76	115	34	85	119	48	69	117	49	90	139							170	320	490
	Social Management	155			620	82	87	169	81	84	165	99	69	168	99	95	194							361	335	696
	Total	265			1,060	121	163	284	115	169	284	147	138	285	148	185	333							531	655	1,186
Humanities	Humanities and Cultural Studies							-			-			-	0	0	0							0	0	0
	Social Science and Social System Studies							-			-			-	0	1	1							0	1	1
	Economics and Commercial Sciences							-			-			-	2	0	2							2	0	2
	Total				0	0	0	0	0	0	0	0	0	2	1	3							2	1	3	
Education	Teacher Training Division	140			570	62	84	146	52	91	143	69	81	150	84	93	177							267	349	616
	School Nurse Training Division	20			80	0	22	22	0	22	22	0	22	22	0	22	22							0	88	88
	Community Education Training Division							-			-			-	2	0	2							2	0	2
	Total	160			650	62	106	168	52	113	165	69	103	172	86	115	201							269	437	706
Medicine	Medicine	112	20		772	61	55	116	94	56	150	76	48	124	70	63	133	77	72	149	70	61	131	448	355	803
	Health Sciences	200		30	860	61	141	202	58	150	208	68	137	205	65	145	210							252	573	825
	Clinical Psychological Science	10			30	2	9	11	3	8	11	4	6	10			-							9	23	32
	Total	322	20	30	1,662	124	205	329	155	214	369	148	191	339	135	208	343	77	72	149	70	61	131	709	951	1,660
Science and Technology	Mathematics and Physics	78		2	316	72	8	80	71	7	78	76	7	83	70	9	79							289	31	320
	Frontier Materials Chemistry	52		1	210	41	12	53	35	16	51	41	12	53	47	18	65							164	58	222
	Global Environment and Disaster Prevention Sciences	65		2	264	55	10	65	48	18	66	51	14	65	60	14	74							214	56	270
	Electronics and Information Technology	55		2	224	54	4	58	54	4	58	59	2	61	53	10	63							220	20	240
	Mechanical Science and Engineering	80		2	324	77	3	80	74	8	82	74	7	81	81	8	89							306	26	332
	Sustainable Energy	30		1	122	26	4	30	27	3	30	28	5	33	23	7	30							104	19	123
	Earth and Environmental Sciences							-			-			-	1	0	1							1	0	1
	Intelligent Machines and System Engineering							-			-			-	1	0	1							1	0	1
Total	360		10	1,460	325	41	366	309	56	365	329	47	376	336	66	402							1,299	210	1,509	
Agriculture and Life Science	Biology	40			160	36	8	44	27	17	44	30	13	43	35	12	47							128	50	178
	Biochemistry and Molecular Biology	40			160	21	21	42	16	25	41	21	18	39	23	25	48							81	89	170
	Applied Biology and Food Sciences	55			220	37	20	57	19	34	53	23	34	57	32	28	60							111	116	227
	International Agriculture and Horticulture	50			200	31	21	52	27	21	48	28	25	53	34	23	57							120	90	210
	Agricultural and Environmental Engineering	30			120	25	7	32	25	6	31	23	8	31	32	4	36							105	25	130
	Total	215			860	150	77	227	114	103	217	125	98	223	156	92	248							545	370	915
Grand Total	1,322	20	40	5,692	782	592	1,374	745	655	1,400	818	577	1,395	863	667	1,530	77	72	149	70	61	131	3,355	2,624	5,979	

Graduate Schools

As of May 1, 2022

Classification			Annual Admission Capacity	Enrollment Capacity	Actual Enrollment																	
					Freshmen			Sophomores			Juniors			Seniors			Grand Total					
					M	F	Sub Total	M	F	Sub Total	M	F	Sub Total	M	F	Sub Total	M	F	Total			
Humanities and Social Sciences	Master's Course	Humanities and Social Sciences	16	32	9	12	21	11	9	20	/			/			20	21	41			
		Cultural Studies			/	/	-	2	3	5							2	3	5			
		Applied Social Sciences			/	/	-	0	1	1							0	1	1			
		Total	16	32	9	12	21	13	13	26							22	25	47			
Education	Master's Course	School Education			/	/	-	1	1	2	/			/			1	1	2			
		Curriculum Studies	18	36	10	8	18	12	8	20							22	16	38			
Medicine	Doctoral Course	Medical Science	60	240	40	26	66	42	25	67	34	12	46	74	35	109	190	98	288			
Health Sciences	Master's Course	Health Sciences	30	60	19	14	33	24	17	41	/			/			43	31	74			
	Doctoral Course	Health Sciences	12	36	8	5	13	10	3	13							17	12	29	35	20	55
Science and Technology	Master's Course	Science and Technology	120	240	111	12	123	118	10	128	/			/			229	22	251			
	Doctoral Course	Advanced Materials Science and Technology	6	18	1	0	1	1	1	2							2	0	2	4	1	5
		Safety Science and Technology	6	18	4	4	8	8	1	9							5	5	10	17	10	27
		Total	12	36	5	4	9	9	2	11							7	5	12	21	11	32
Agriculture and Life Science	Master's Course	Agriculture and Life Sciences	50	100	32	14	46	26	18	44	/			/			58	32	90			
Sustainable Community Studies	Master's Course	Community Renovation	15	30	10	7	17	7	8	15							17	15	32			
		Industry Development Sciences	15	30	10	6	16	6	9	15							16	15	31			
		Total	30	60	20	13	33	13	17	30	33	30	63									
Regional Studies	Doctoral Course	Regional Studies	6	18	5	2	7	5	0	5	13	14	27	/			23	16	39			
Grand Total			354	858	259	110	369	273	114	387	71	43	114				74	35	109	677	302	979

The United Graduate School of Agricultural Sciences, Iwate University (Doctoral Course)

The current figure indicates the number of students who belong to Hirosaki University (supervising educators).

As of May 1, 2022

Classification			Annual Admission Capacity	Enrollment Capacity	Actual Enrollment														
					Freshmen			Sophomores			Juniors			Seniors			Grand Total		
					M	F	Sub Total	M	F	Sub Total	M	F	Sub Total	M	F	Sub Total	M	F	Total
The United Graduate School of Agricultural Sciences, Iwate University (Doctoral Course)			24	72	8	2	10	8	2	10	6	3	9	/			22	7	29

Attached School (Faculty of Education)

As of May 1, 2022

Classification		Enrollment Capacity	Classes	Actual Enrollment						
				1st Year	2nd Year	3rd Year	4th Year	5th Year	6th Year	Total
Kindergarten		90	4	(3-year-old) 10		(4-year-old) 17		(5-year-old) 18		45
Elementary School		572	19	71	68	84	101	89	79	492
Junior High School		421	13	128	125	164				417
School for Special Needs Education	(Elementary)	18	3	(Lower) 6		(Intermediate) 5		(Higher) 6		17
	(Junior High)	18	3	4	6	6				16
	(Senior High)	24	3	8	4	7				19
Total		1,143								1,006

International Students

As of May 1, 2022

Classification	Faculties, etc.	Country / Region	China	South Korea	Thailand	Malaysia	Indonesia	Vietnam	Bangladesh	Italy	Kenya	India	Mongolia	Chile	Brazil	Taiwan	Germany	Russia	Total		
Undergraduates	Private Regular Students	Humanities and Social Sciences	13			3		2												18	
		Medicine	1																		1
		Science and Technology	5			1															6
		Agriculture and Life Science	3	2		1															6
	Private Research Students	Humanities and Social Sciences	8																		8
		Education	2																		2
		Health Sciences	2																		2
		Agriculture and Life Science	2											1							3
	Special Auditors	Humanities and Social Sciences		2	4						4						3	2	1		16
		Education	1														1				2
		Agriculture and Life Science															1				1
	Japanese Government (**MEXT) Scholarship Japanese Studies Students	Humanities and Social Sciences									1				1						2
		Science and Technology														1					1
	Japanese Government (**MEXT) Scholarship Teacher Training Students	Education										1									1
	Graduates	Japanese Government (**MEXT) Scholarship Regular Students	Science and Technology			1		2													3
			The United Graduate School of Agricultural Sciences								3										
Private Regular Students		Humanities and Social Sciences	20																		20
		Education	1																		1
		Medicine	7																		7
		Health Sciences			3		2	1													6
		Science and Technology	15																		15
		Agriculture and Life Science	4			1				1											6
		Sustainable Community Studies	13							1											14
		Regional Studies	5		1																6
The United Graduate School of Agricultural Sciences		3							1				1							5	
Private Research Students		Sustainable Community Studies	1																		1
		Regional Studies	2																		2
Japanese Government (**MEXT) Scholarship Research Students		Science and Technology								1											1
Total			108	4	9	6	4	3	7	5	1	1	1	1	1	5	2	1	159		

**MEXT: Ministry of Education, Culture, Sports, Science and Technology

International Academic Exchange Agreements (University-wide Agreements)

As of May 1, 2022

Country / Region		University	Date of Agreement
North America / South America	U.S.A	University of Tennessee at Martin	July 8, 1980
		University of Maine	June 26, 1997
		San Diego State University	March 19, 2001
		University of Hawai'i Community Colleges	October 30, 2017
	Canada	University of Saskatchewan	December 7, 2001
		Mount Royal University	June 1, 2005
		Thompson Rivers University	October 19, 2006
Republic of Chile	University of La Frontera	June 25, 2002	
United Mexican States	The Benito Juarez Autonomous University	May 13, 2016	
Europe	French Republic	University Bordeaux Montaigne	January 31, 1994
	Russian Federation	Far Eastern State Medical University	December 14, 1995
		M. V. Lomonosov Moscow State University	September 20, 2000
		Irkutsk State University	March 20, 2002
	Republic of Ireland	Environmental Protection Agency	June 13, 2019
	Romania	Hyperion University	September 11, 1998
		Alexandru Ioan Cuza University of Iasi	March 9, 2020
	Federal Republic of Germany	University of Trier	May 3, 1999
	Republic of Hungary	University of Debrecen	December 22, 2000
	Italian Republic	University of Catania	March 27, 2018
University of Turin		November 11, 2020	
Oceania	New Zealand	University of Otago	September 20, 2000
		Auckland University of Technology	December 12, 2001
East Asia	People's Republic of China	Harbin Normal University	August 1, 1995
		Yanbian University	August 28, 2000
		Zhengzhou University	October 12, 2000
		Dalian University of Technology	December 28, 2009
		Xinjiang Institute of Engineering	September 23, 2016
		Qingdao Agricultural University	December 26, 2016
		Taiyuan University of Technology	April 19, 2017
		Shenyang University of Chemical Technology	November 20, 2017
		Central South University of Forestry and Technology	June 5, 2019
		Northeastern University	December 1, 2019
		Guangdong University of Technology	May 27, 2020
	Liaoning Petrochemical University	March 30, 2022	
	Republic of Korea	Nam Seoul University	June 1, 2001
		Kyungpook National University	July 11, 2001
		Pusan National University	December 12, 2001
		Kyonggi University	September 25, 2002
	Taiwan	National University of Kaohsiung	November 17, 2016
		Kainan University	November 18, 2016
		Mackay Medical College	October 30, 2017
		National Pingtung University	April 10, 2018
Chinese Culture University		February 19, 2019	
Southeast Asia	Kingdom of Thailand	Chiang Mai University	November 2, 2000
		Khon Kaen University	May 6, 2008
		Thammasat University	April 14, 2017
	Malaysia	Universiti Tunku Abdul Rahman	April 11, 2017
	Republic of Indonesia	Institut Teknologi Bandung	May 2, 2017
National Nuclear Energy Agency		October 3, 2017	
Socialist Republic of Viet Nam	An Giang University	July 2, 2018	
Central Asia	Republic of Uzbekistan	Tashkent State Agrarian University	September 19, 2016
		Samarkand Agricultural Institute/University	September 22, 2016
	Turkmenistan	Turkmen Agricultural University named after S.A.Nyyazov	March 28, 2019
Africa	People's Democratic Republic of Algeria	University of Science and Technology of Oran Mohamed Boudiaf	March 5, 2018

International Academic Exchange Agreements (Discipline-specific Agreements)

As of May 1, 2022

Note	Country		University	Date of Agreement
Faculty of Humanities and Social Sciences	Europe	Republic of Finland	Ruralia Institute, University of Helsinki	September 7, 2009
	East Asia	People's Republic of China	School of Foreign Languages, Beijing Institute of Technology	March 12, 2022
Faculty of Education	North America / South America	U.S.A	University of South Carolina	July 20, 1994
School of Medicine	North America / South America	U.S.A	University of Tennessee Center for the Health Sciences	May 19, 1982
		Jamaica	The University of the West Indies	February 25, 2002
	Europe	Republic of Slovenia	Faculty of Medicine, University of Ljubljana	November 28, 2014
	East Asia	People's Republic of China	China Medical University	October 25, 2005
Graduate School of Health Sciences	North America / South America	U.S.A	School of Nursing and Dental Hygiene, University of Hawai'i at Manoa	August 29, 2019
	Europe	Kingdom of Sweden	Centre for Radiation Protection Research, Stockholm University	March 6, 2013
	East Asia	Taiwan	College of Nursing, Taipei Medical University	September 26, 2019
Faculty of Agriculture and Life Science	East Asia	People's Republic of China	Xishuangbanna Tropical Botanical Garden, Chinese Academy of Sciences	October 29, 2018
			College of Horticulture, ShenYang Agricultural University	April 26, 2021
		Republic of Korea	College of Agriculture and Life Sciences, Kangwon National University	November 5, 2018
			The College of Agriculture, Life & Environment Sciences, Chungbuk National University	December 6, 2018
	Taiwan	College of Agriculture and Natural Resources, National Chung Hsing University	November 15, 2017	
	Southeast Asia	Kingdom of Thailand	School of Energy and Environment, University of Phayao	August 6, 2018
			School of Management and Information Sciences, University of Phayao	August 6, 2018
	South Asia	India	Faculty of Science, Alagappa University	August 7, 2018
			Faculty of Arts, Alagappa University	August 7, 2018
		People's Republic of Bangladesh	Faculty of Agriculture, Hajee Mohammad Danesh Science & Technology University	November 24, 2018
Graduate School Regional Studies	East Asia	People's Republic of China	College of International Development and Global Agriculture, China Agricultural University	June 1, 2020
Institute of Radiation Emergency Medicine	Europe	Republic of Hungary	University of Pannonia, Faculty of Engineering, Institute of Radiochemistry and Radioecology	March 18, 2013
		French Republic	Faculty of Physics and Engineering, University of Strasbourg	October 30, 2019
	East Asia	People's Republic of China	National Institute for Radiological Protection, China CDC	May 2, 2016
			School of Radiation Medicine and Protection and Radiation Medicine and Interdisciplinary Sciences, Soochow University	May 21, 2018
			Institute of Radiation Medicine, Fudan University	March 12, 2019
			Institute of Nuclear Applied Technology, East China University of Technology	September 14, 2020
			College of Physics and Electronic Engineering, Hengyang Normal University	September 30, 2021
	Republic of Korea	Korea Institute of Radiological and Medical Sciences	January 21, 2013	
		Dongnam Institute of Radiological & Medical Sciences	June 14, 2016	
	Southeast Asia	Kingdom of Thailand	Faculty of Science, Kasetsart University	July 11, 2018
			Faculty of Engineering, Chulalongkorn University	December 21, 2018
		Socialist Republic of Viet Nam	Institute for Nuclear Science and Technology, Vietnam Atomic Energy Institute	November 22, 2013
		Republic of the Philippines	The Philippine Nuclear Research Institute	June 30, 2015
	Republic of Indonesia	Center for Technology of Radiation Safety and Metrology, Notional Nuclear Energy Agency of Indonesia	June 18, 2021	
		Centre for Advanced Research in Environmental Radioactivity, Mangalore University	August 19, 2019	
	South Asia	India	Atomic Energy Centre, Dhaka, Bangladesh Atomic Energy Commission	October 15, 2018
		People's Republic of Bangladesh	Department of Physics, Federal University of Agriculture Abeokuta	September 30, 2021
	Africa	Federal Republic of Nigeria		
Institute of Regional Innovation	East Asia	People's Republic of China	School of Chemical Engineering, Sichuan University	June 8, 2016
			School of Chemistry and Environmental Engineering Shanxi Datong University	May 22, 2019
	Southeast Asia	Republic of Indonesia	Faculty of Mathematic and Natural Sciences Department of Chemistry Sriwijaya University	February 13, 2019

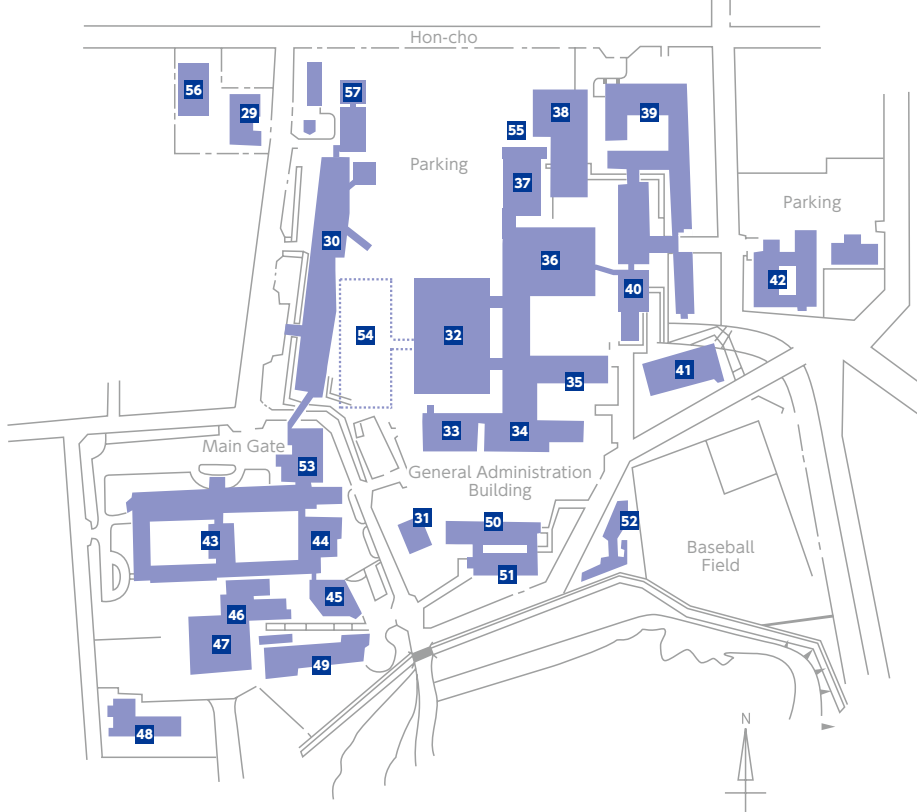


Bunkyo-cho Campus

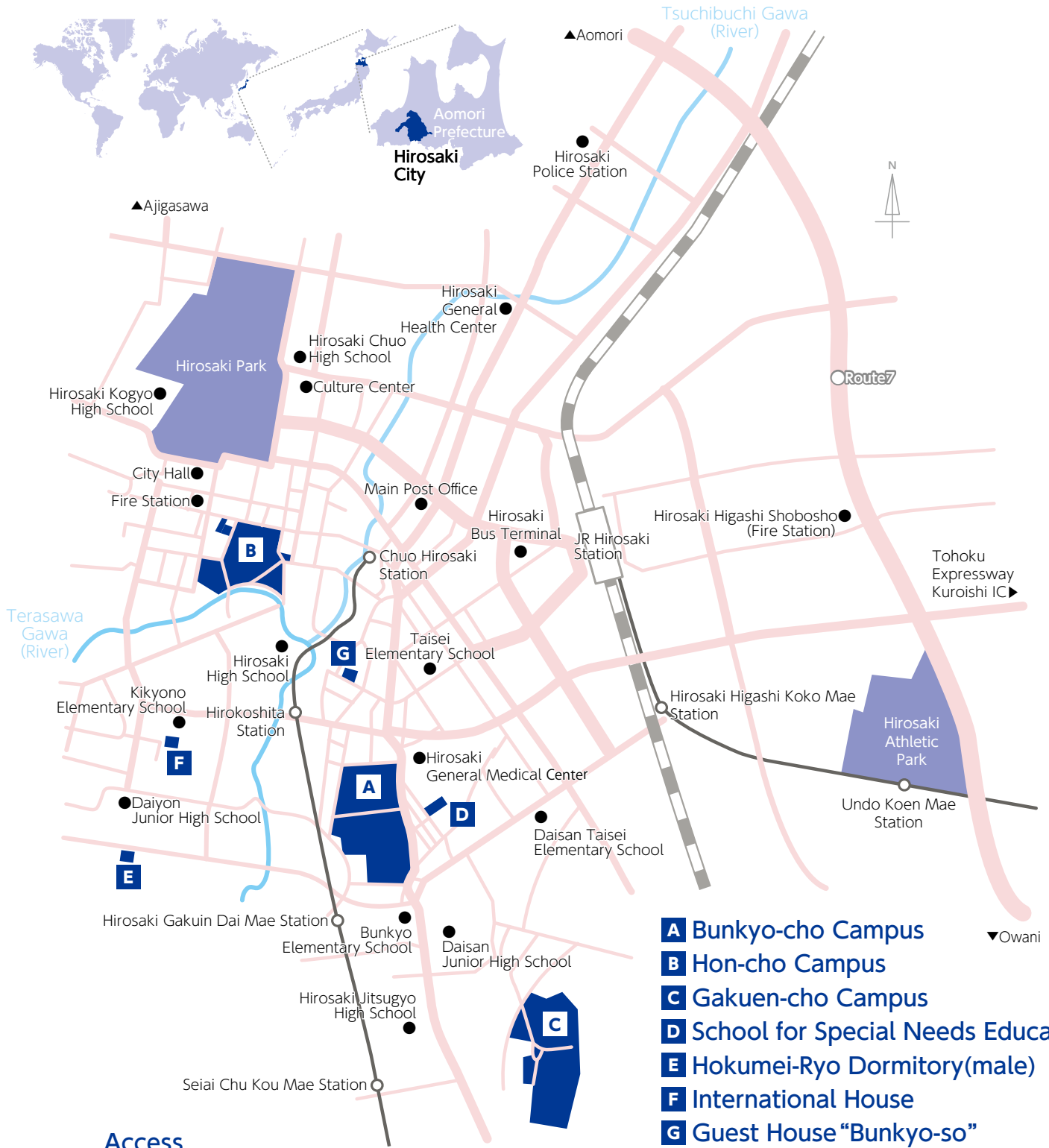


- 01 Hirosaki Higher School Foreign Lecturer Residence (Hirodai Cafe)
- 02 Information (Guard Gate)
- 03 Administration Bureau
- 04 Health Administration Center
- 05 50th Anniversary Auditorium
- 06 General Education Building
- 07 Faculty of Humanities and Social Sciences Building
- 08 University Library
- 09 University Center 10 Commons
- 11 Faculty of Education Building
- 12 University Museum
- 13 Center for Education Research and Practice
- 14 Training Camp Center
- 15 Gymnasium No.1 16 Kyudo Hall
- 17 Earthquake and Volcano Observatory
- 18 Information Management Headquarters, Information Technology Center
- 19 Gene Research Center
- 20 60th Anniversary Auditorium 'Collabo HiroDai'
- 21 Collaboration Center
- 22 Faculty of Science and Technology Building No.1
- 23 Faculty of Science and Technology Building No.2
- 24 Faculty of Agriculture and Life Science Building
- 25 Greenhouse
- 26 Gymnasium No.2 27 Martial Arts Hall
- 28 Building for Extracurricular Activities

Hon-cho Campus



- 29 Medical Communications Center
- 30 Clinical Research Building
- 31 Lecture Building
- 32 Outpatient Clinic
- 33 Energy Center
- 34 First Ward
- 35 Second Ward
- 36 Central Clinical Service Building
- 37 Advanced Emergency and Disaster Medical Center
- 38 Multi-storey Car Parking
- 39 Graduate School of Health Sciences, School of Clinical Psychological Science
- 40 Multidiscipline Medicine Building Institute of Radiation Emergency Medicine
- 41 Gymnasium 42 Lodging for Nurses
- 43 Graduate School of Medicine
- 44 Hirosaki University Medical Branch Library
- 45 Foundation Lecture Building
- 46 Radioisotope Laboratory
- 47 Extracurricular Activity Equipment Storage Area
- 48 Shared Use Institution, Hon-cho Campus Center for Advanced Medical Research
- 49 Institute of Brain Science
- 50 Student Support Center 1 (Learning Center)
- 51 Hirodai Nursery
- 52 Student Support Center 2 (Student Friendship Center)
- 53 Innovation Center for Health Promotion
- 54 New ward under construction
- 55 Triage Unit (temporary)
- 56 West Building
- 57 Multi-purpose Building



- A** Bunkyo-cho Campus
- B** Hon-cho Campus
- C** Gakuen-cho Campus
- D** School for Special Needs Education
- E** Hokumei-Ryo Dormitory(male)
- F** International House
- G** Guest House “Bunkyo-so”

Access

Tokyo	Tohoku Shinkansen (3h10m)	Shin Aomori Station	JR Super Express (30m)	100yen bus (Dotemachi Line) (15m)	University Hospital Mae	Hon-cho Campus
	Airplane (1h20m)	Aomori Airport	Konan Bus(Local Bus) (55m)	*6 Komagoshi Line (15m)		
Sapporo	JR Super Express (3h30m)	Shin Hakodate Hokuto Station	Hokkaido Shinkansen (1h10m)	Shin Aomori Station	JR Super Express (30m)	Bunkyo-cho Campus
	Airplane (45m)	Aomori Airport	Konan Bus(Local Bus) (55m)	*8 Kinzoku Danchi/Sakuragaoka Line (15m)	Hon-cho	
Morioka	Highway Bus (Yodel) (2h15m)			*3 Koguriyama/Oinomori Line (15m)	Hirosaki Daigaku-Mae or Hirodai Nogakuseimei-kagakubu-Mae	Bunkyo-cho Campus
Sendai	Highway Bus (Castle) (4h20m)			*3 Gakuen-cho Line (15m)	Gakuen-cho	

*Chuo Exit Busstop



National University Corporation Hirosaki University

1 Bunkyo-cho, Hirosaki, Aomori, 036-8560, Japan

URL <https://www.hirosaki-u.ac.jp/en/>

Designed by SEITO Shinichiro (Completed Graduate School of Education), Under the Supervision of ISHIKAWA Yoshiro (Former Professor, Faculty of Education, Hirosaki University)



Hirosaki University
website



HIROSAKI
UNIVERSITY