



2023

HIROSAKI UNIVERSITY

Overview

IDEALS AND PRINCIPLES • FUNDAMENTAL GOALS

Ideals and Principles

Hirosaki University has, in the spirit of the Basic Act on Education, established the following institutional goals: 1) to incorporate extensive bodies of knowledge into our campus culture; 2) to engage in the teaching of and research in a broad range of specialized scholarly fields; 3) to educate persons of character and integrity who can contribute to human culture.

Future Vision of Hirosaki University

Basic Principles

Hirosaki University, under the slogan of “Communicating with the world; Creating with our community,” has positioned the four themes of renewable energy, the environment, radiation emergency medicine, and food, which are also the “strengths” of the region, as priority areas for the university, and has promoted education and research as well as regional cooperation. In the 3rd Midterm Target Period, the University carried out innovative research that focused on regional characteristics and has also achieved solid results in education and research, internationalization, and administration. In the 4th Midterm Target Period, our basic policy will be to contribute to the revitalization of the region and drive the sustainable development of the entire regional society by creating more value to the “strengths” of the university that we have accumulated so far, while accurately taking into account the needs of the region and national policies.

In response to the major social changes triggered by the new COVID-19 pandemic, we will promote the creation of regional innovations, develop human resources, and based on our distinctive world-class research capabilities encourage research and development that will lead the way in social reform and for regional development.

In addition, we will accelerate our transformation into a “regional national university with distinctive characteristics” with the aim of further developing our university as a regional “knowledge” center. To this end, we will reorganize and strengthen the functions of our education and research organizations, reform our entrance examinations to cope with the declining birthrate, reform our education to make it more student-centered and promote new internationalization for life after COVID-19.

Furthermore, Japan has an ageing society, a low birthrate as well as a shortage of medical doctors in rural areas and these factors hinder the development of local regions. In Aomori Prefecture, where the population is ageing rapidly, the University has taken the lead in providing regional medical care, and will collaborate with local governments to establish a new, sustainable regional medical care delivery system that will serve as the foundation for regional development.

In order to realize the above initiatives, the University, under the leadership of the President with a medium- to long-term perspective, will implement bold and strategic management and administrative reforms unconstrained by conventional ways of thinking.

Educational Reform

In this new version of society, Society 5.0, emotional intelligence, communication skills, and creativity will become essential skills for the future. In addition to these skills, we will promote educational reforms to cultivate students’ knowledge across the humanities and sciences, so they can respond flexibly to the changes in the global society and engage in regional development.

Based on the starting point of learner-centered education, we will actively use Institutional Research (IR) for teaching and learning, introduce mathematical and data science education throughout the university, improve faculty development (FD) programs, make learning outcomes more visible to the students, and further strengthen various types of support for students.

In addition, we will strive to secure a diverse range of student applicants by examining admission methods based on the results of previous entrance examinations and by improving the publicity of the entrance examinations.

Promotion of Research

We will promote research that is done at the international level, opens up new fields of research, and protects and enriches the region. In this context, we will strengthen our research capabilities based on the following perspectives: support for young and female researchers, attain competitive research funds, create and put to use intellectual property, promote international joint research, and develop researchers at the University.

In addition, we will promote research in the following areas: the environment, energy, radiation, food and nature, extending the health and life expectancy of local residents, improving regional power, and utilizing cultural resources, which are positioned as important themes of the University.

Internationalization of the University

Internationalization is an essential element for universities as institutions of higher education. Aomori Prefecture, which is ambitiously developing a focus on “agriculture, forestry, and fisheries,” is also seeking talented individuals with a global perspective to expand exports of agriculture, forestry, and fisheries products abroad, and working together with the local community, the University aims to cultivate such global-minded individuals to drive these industries into the future.

In addition to bidirectional study-abroad programs between Hirosaki University and overseas partner universities (international exchange), we will work to improve the environment for international education and research through online collaboration to further internationalize the University in the post-COVID-19 era, and promote international initiatives linked to the local community.

Regional Cooperation and Regional Contribution

The University will promote education and research that are useful for solving regional issues and that can be implemented to improve society. To accomplish this, the University aims to cultivate students who will be able to lead the local regions forward into the future, promote regional establishments, and create new innovations that will benefit society and the local regions.

As “a university that supports the region and is supported by the region,” we will further strengthen our relationships with other universities, local governments, and industries that have been cultivated to date, and we will continue to play a leading and central role in promoting contributions to the region, thereby revitalizing the region and achieving regional development.

Administrative Management

The University aims to strengthen governance by moving forward in unison, with the President exercising leadership and the entire university having a common understanding of the university’s goals and plans regarding education, research, community contributions, advanced medical care, etc. From this point of view, we will continually review the University’s management and administration system, administrative organization, and methods of performing duties. Moreover, as a core part of management, the University will also continually aim to strengthen its financial situation.

Education/Research Organization

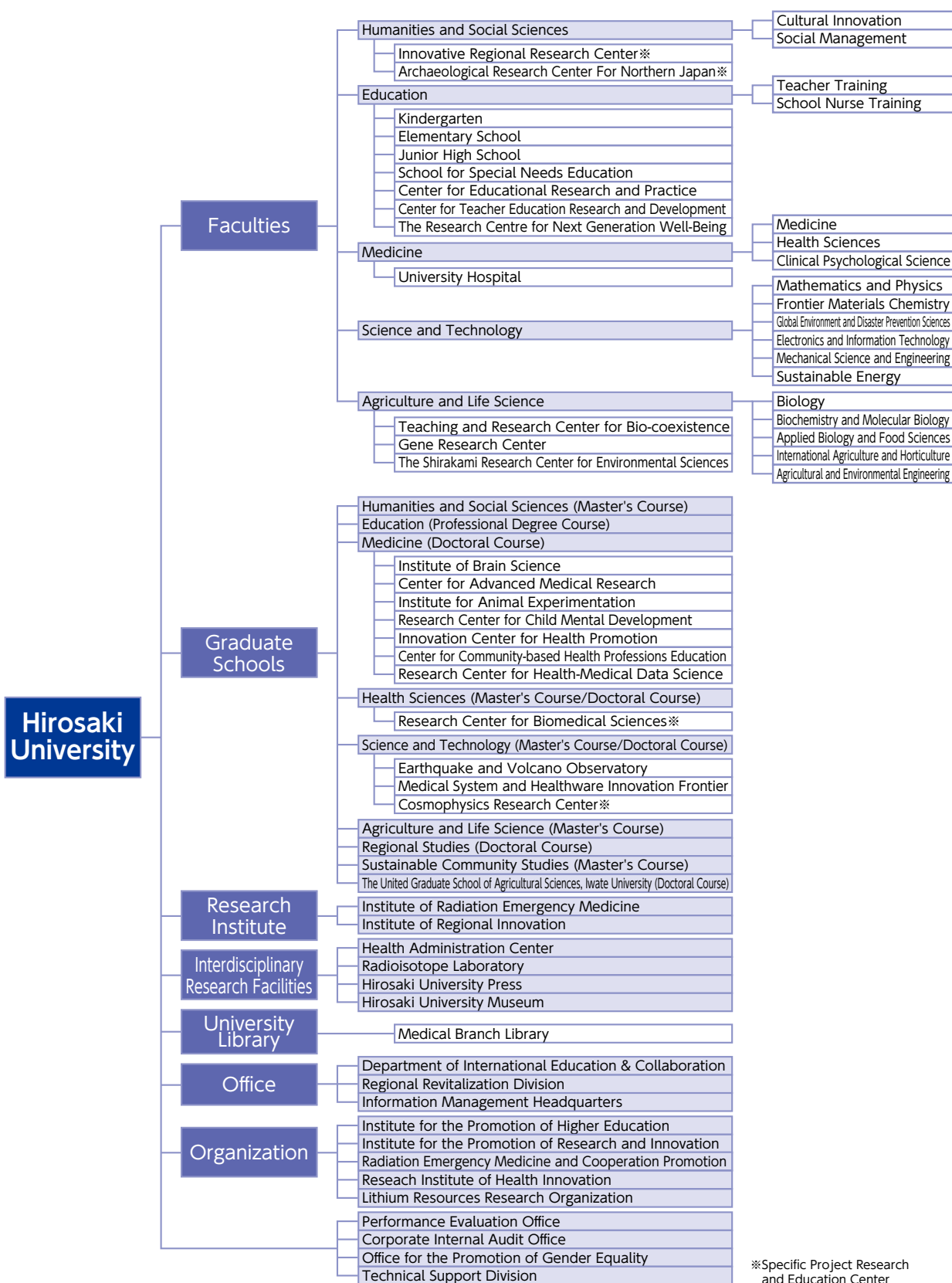
We will examine the reorganization of faculties, graduate schools, and research institutes implemented during the 3rd Midterm Target Period, and continually promote reforms to maintain the basic academic disciplines necessary as an institution of higher education and to improve the overall functionality of the University. As for the future reorganization of education and research organizations, we will also review the nature of the faculty organizations that support them.

Medical Care

As a key contributor to the medical care in the region, the University will continue to provide specialized and advanced state-of-the-art medical care and promote medical support to remote areas by utilizing information and communication technology.

In addition, in order to foster various medical personnel including doctors, and to research and develop advanced medical technology through clinical research, we will strengthen our functions as an educational and research institution and further strengthen our management base to promote the facility improvement plan.

ACADEMIC ORGANIZATION





Hirosaki University Logo

■ Established July 24, 2006

■ Concept: The university's logo takes cherry blossoms, for which Hirosaki City has great pride, as its motif. Blossoms representing each of five faculties are gathered together into one large blooming flower, facing the future. The circle in the center of the logo stands for the Earth, and expresses how graduates of Hirosaki University will make outstanding contributions to business and research, helping to make the world go round. In addition, the five different colors represent the different faculties: red for Medicine, orange for Education, green for Agriculture & Life Science, blue for Science & Technology, and purple for Humanities and Social Sciences. The image of the flowers scattered around the Earth like satellites also carries the meaning of Hirosaki University becoming a beacon for the region. Taken as a whole, the logo was designed to have a colorful, modern feel, brimming with freshness, vigor, and the energy of an enjoyable campus life.

President, Executive Director, Auditor

As of May 1, 2023

President		Executive Director		Auditor		Assistant to the President		Vice Executive Director		Total		Grand Total
M	F	M	F	M	F	M	F	M	F	M	F	
1		5 (1)	1	1	1 (1)	4 (2)		7 (4)	1	18 (7)	3 (1)	21 (8)

Note: Part-time positions are shown in () and are included in the total number.

Note: For Assistants to the President and Vice Executive Directors, numbers include cases where one person holds more than one position.

Divisions	Professors		Associate Professors		Lenturers		Assistant Professors		Research Associates		Teachers of Attached School		Total		Other Staff		Total		Grand Total
	M	F	M	F	M	F	M	F	M	F	M	F	M	F	M	F	M	F	
The Number of Present Employees	185	30	161	41	63	13	167	71	38	26	41	50	655	231	373	798	1,028	1,029	2,057
Administration Bureau													0	0	110	60	110	60	170
Faculty of Humanities and Social Sciences	16	6	25	5	1		10	5					52	16	5	5	57	21	78
Faculty of Education	30	5	24	12	5	1	8	2			41	50	108	70	7	8	115	78	193
Graduate School of Medicine	37	2	28	4	19	2	55	20	8	8			147	36	15	5	162	41	203
Graduate School of Health Sciences	19	14	9	7	6	4	15	15		5			49	45	8	3	57	48	105
University Hospital			9		26	5	43	19	28	12			106	36	184	686	290	722	1,012
Graduate School of Science and Technology	41	1	29	3	3		15	3	1				89	7	12	10	101	17	118
Faculty of Agriculture and Life Science	28	2	29	2	1		13	2					71	6	15	7	86	13	99
Graduate School of Regional Studies	3		1										4	0			4	0	4
Institute of Radiation Emergency Medicine	3		2				1	1					6	1	3		9	1	10
Institute of Regional Innovation	5		3	1				1					8	2	2	2	10	4	14
Health Administration Center	1			1		1							1	2		2	1	4	5
Radioisotope Laboratory													0	0	1	1	1	1	2
University Library													0	0	7	6	7	6	13
Department of International Education & Collaboration			1	3				1					1	4	4	3	5	7	12
Regional Revitalization Division							1						1	0			1	0	1
Institute for the Promotion of Higher Education			1	3	1		3	1					5	4			5	4	9
Institute for the Promotion of Research and Innovation					1		1						2	0			2	0	2
Radiation Emergency Medicine and Cooperation Promotion	1						1						2	0			2	0	2
Research Institute of Health Innovation	1						1		1	1			3	1			3	1	4
Office for the Promotion of Gender Equality								1					0	1			0	1	1

Note: The number of staff working for the Corporate Internal Audit Office are included in the number working for the Administration Bureau.

Note: The number of staff working for the Graduate School of Sustainable Community Studies and the Graduate School of Regional Studies are included in the number working for the Faculty of Humanities and Social Sciences.

Undergraduates

As of May 1, 2023

Faculties	Departments and Courses	Annual Admission Capacity	Second year Transfer Student	Third year Transfer Student	Enrollment Capacity	Actual Enrollment																				
						Freshmen			Sophomores			Juniors			Seniors			5th year			6th year			Grand Total		
						M	F	Sub Total	M	F	Sub Total	M	F	Sub Total	M	F	Sub Total	M	F	Sub Total	M	F	Sub Total	M	F	Total
Humanities and Social Sciences	Cultural Innovation	110			440	40	79	119	38	76	114	34	84	118	55	79	134							167	318	485
	Social Management	155			620	87	79	166	82	87	169	78	84	162	114	77	191							361	327	688
	Total	265			1,060	127	158	285	120	163	283	112	168	280	169	156	325							528	645	1,173
Humanities	Economies and Commercial Sciences							-			-			-	2	0	2							2	0	2
	Total				0	0	0	0	0	0	0	0	0	0	2	0	2							2	0	2
Education	Teacher Training Division	140			560	63	86	149	62	83	145	51	92	143	74	91	165							250	352	602
	School Nurse Training Division	20			80	0	22	22	0	22	22	0	22	22	0	23	23							0	89	89
	Community Education Training Division							-			-			-	1	0	1							1	0	1
	Total	160			640	63	108	171	62	105	167	51	114	165	75	114	189							251	441	692
Medicine	Medicine	112	20		772	69	53	122	73	60	133	92	54	146	71	49	120	70	61	131	76	72	148	451	349	800
	Health Sciences	200		30	860	67	140	207	60	141	201	58	150	208	71	141	212							256	572	828
	Clinical Psychological Science	10			40	1	9	10	2	9	11	3	8	11	4	6	10							10	32	42
	Total	322	20	30	1,672	137	202	339	135	210	345	153	212	365	146	196	342	70	61	131	76	72	148	717	953	1,670
Science and Technology	Mathematics and Physics	78		2	316	70	8	78	70	7	77	70	7	77	82	7	89							292	29	321
	Frontier Materials Chemistry	52		1	210	34	18	52	41	11	52	34	17	51	51	13	64							160	59	219
	Global Environment and Disaster Prevention Sciences	65		2	264	48	17	65	55	10	65	48	17	65	61	15	76							212	59	271
	Electronics and Information Technology	55		2	224	52	6	58	52	4	56	54	4	58	65	2	67							223	16	239
	Mechanical Science and Engineering	80		2	324	75	5	80	76	3	79	75	8	83	84	7	91							310	23	333
	Sustainable Energy	30		1	122	26	2	28	26	4	30	27	5	32	29	5	34							108	16	124
	Earth and Environmental Sciences							-			-			-	1	0	1							1	0	1
	Total	360		10	1,460	305	56	361	320	39	359	308	58	366	373	49	422							1,306	202	1,508
Agriculture and Life Science	Biology	40			160	25	15	40	35	8	43	28	17	45	34	15	49							122	55	177
	Biochemistry and Molecular Biology	40			160	22	18	40	22	21	43	17	25	42	24	21	45							85	85	170
	Applied Biology and Food Sciences	55			220	21	35	56	37	20	57	20	33	53	23	35	58							101	123	224
	International Agriculture and Horticulture	50			200	31	23	54	30	21	51	26	21	47	36	29	65							123	94	217
	Agricultural and Environmental Engineering	30			120	25	5	30	25	7	32	24	6	30	28	9	37							102	27	129
	Total	215			860	124	96	220	149	77	226	115	102	217	145	109	254							533	384	917
	Grand Total	1,322	20	40	5,692	756	620	1,376	786	594	1,380	739	654	1,393	910	624	1,534	70	61	131	76	72	148	3,337	2,625	5,962

Graduate Schools

As of May 1, 2023

Classification			Annual Admission Capacity	Enrollment Capacity	Actual Enrollment														
					Freshmen			Sophomores			Juniors			Seniors			Grand Total		
					M	F	Sub Total	M	F	Sub Total	M	F	Sub Total	M	F	Sub Total	M	F	Total
Humanities and Social Sciences	Master's Course	Humanities and Social Sciences	16	32	12	8	20	12	13	25							24	21	45
		Cultural Studies					-	1	1	2							1	1	2
		Total	16	32	12	8	20	13	14	27							25	22	47
Education	Master's Course	School Education					-	0	1	1							0	1	1
		Curriculum Studies	18	36	9	7	16	10	8	18							19	15	34
Medicine	Doctoral Course	Medical Science	60	240	40	16	56	40	26	66	41	25	66	73	35	108	194	102	296
Health Sciences	Master's Course	Health Sciences	30	60	17	10	27	22	18	40							39	28	67
	Doctoral Course	Health Sciences	12	36	11	2	13	7	5	12	17	12	29				35	19	54
Science and Technology	Master's Course	Science and Technology	120	240	120	15	135	113	14	127							233	29	262
	Doctoral Course	Advanced Materials Science and Technology	6	18	4	1	5	1	0	1	2	1	3				7	2	9
		Safety Science and Technology	6	18	4	1	5	4	4	8	10	3	13				18	8	26
		Total	12	36	8	2	10	5	4	9	12	4	16				25	10	35
Agriculture and Life Science	Master's Course	Agriculture and Life Sciences	50	100	45	15	60	30	14	44							75	29	104
Sustainable Community Studies	Master's Course	Community Renovation	15	30	6	5	11	12	11	23							18	16	34
		Industry Development Sciences	15	30	8	7	15	12	8	20							20	15	35
		Total	30	60	14	12	26	24	19	43							38	31	69
Regional Studies	Doctoral Course	Regional Studies	6	18	4	1	5	5	2	7	13	9	22				22	12	34
Grand Total			354	858	280	88	368	269	125	394	83	50	133	73	35	108	705	298	1,003

The United Graduate School of Agricultural Sciences, Iwate University (Doctoral Course)

The current figure indicates the number of students who belong to Hirosaki University (supervising educators).

As of May 1, 2023

Classification			Annual Admission Capacity	Enrollment Capacity	Actual Enrollment														
					Freshmen			Sophomores			Juniors			Seniors			Grand Total		
					M	F	Sub Total	M	F	Sub Total	M	F	Sub Total	M	F	Sub Total	M	F	Total
The United Graduate School of Agricultural Sciences, Iwate University (Doctoral Course)			24	72	5	2	7	8	2	10	8	3	11				21	7	28

Attached School (Faculty of Education)

As of May 1, 2023

Classification		Enrollment Capacity	Classes	Actual Enrollment							
				1st Year	2nd Year	3rd Year	4th Year	5th Year	6th Year	Total	
Kindergarten		90	4	(3-year-old) 14		(4-year-old) 9		(5-year-old) 18		41	
Elementary School		537	18	71	71	66	83	97	85	473	
Junior High School		384	12	126	128	125				379	
School for Special Needs Education	(Elementary)	18	3	(Lower) 5		(Intermediate) 5		(Higher) 6		16	
	(Junior High)	18	3	5	5	6				16	
	(Senior High)	24	3	8	8	4				20	
Total		1,071									945

International Students

As of May 1, 2023

Classification			Country / Region		China	South Korea	Thailand	Malaysia	Indonesia	Vietnam	Bangladesh	Italy	U.S.A.	Canada	France	Netherlands	Brazil	Taiwan	Germany	Russia	Botswana	Total
Faculties, etc.																						
Undergraduates	Private Regular Students	Humanities and Social Sciences			12			3		1												16
		Medicine			1																	1
		Science and Technology			5			1														6
		Agriculture and Life Science			3	2																5
	Private Research Students	Humanities and Social Sciences			13																	13
		Education			7																	7
		Health Sciences			2																	2
		Agriculture and Life Science			2																	2
	Special Auditors	Humanities and Social Sciences			5	5	1					3	1		3			7	2	2		29
		Education			10	1	2					1	1									15
		Science and Technology												2				1				3
		Agriculture and Life Science				1																1
	Japanese Government (※MEXT) Scholarship Japanese Studies Students	Education														1						1
		Medicine															1					1
	Japanese Government (※MEXT) Scholarship Teacher Training Students	Education						1													1	2
Graduates	Japanese Government (※MEXT) Scholarship Regular Students	Science and Technology							3													3
		The United Graduate School of Agricultural Sciences									3											3
	Private Regular Students	Humanities and Social Sciences			20													1				21
		Education			1																	1
		Medicine			7																	7
		Health Sciences			1		3		1	1												6
		Science and Technology			11																	11
		Agriculture and Life Science			7				1													8
		Sustainable Community Studies			12				1													13
		Regional Studies			5																	5
		The United Graduate School of Agricultural Sciences			3						2											5
	Private Research Students	Medicine			1																	1
Total					128	9	6	5	6	2	5	4	2	2	3	1	1	9	2	2	1	188

※MEXT: Ministry of Education, Culture, Sports, Science and Technology

International Academic Exchange Agreements (University-wide Agreements)

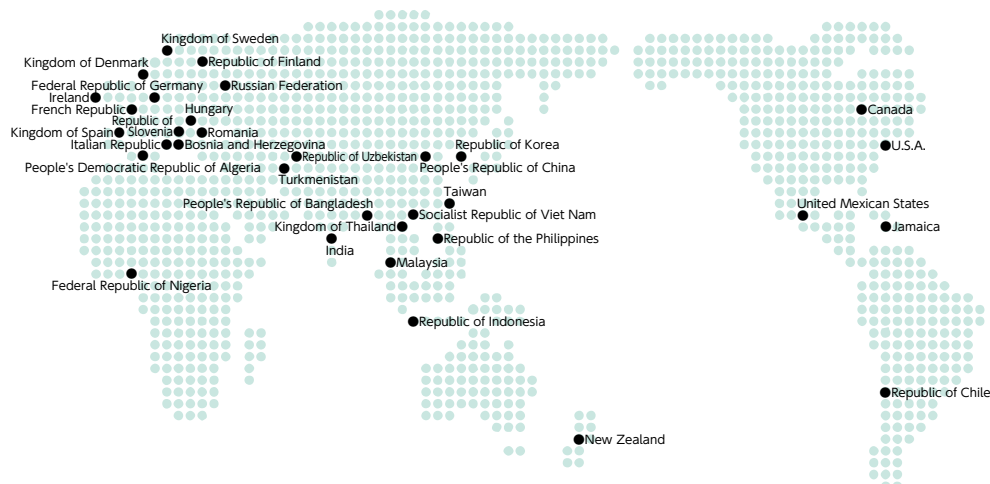
As of May 1, 2023

Country / Region		University	Date of Agreement
North America / South America	U.S.A.	University of Tennessee at Martin	July 8, 1980
		University of Maine	June 26, 1997
		San Diego State University	March 19, 2001
		University of Hawai'i Community Colleges	October 30, 2017
		California State University Monterey Bay	May 16, 2022
	Canada	University of Saskatchewan	December 7, 2001
		Mount Royal University	June 1, 2005
		Thompson Rivers University	October 19, 2006
	Republic of Chile	University of La Frontera	June 25, 2002
	United Mexican States	The Benito Juarez Autonomous University	May 13, 2016
		The National Autonomous University of Mexico	March 17, 2023
Europe	French Republic	University Bordeaux Montaigne	January 31, 1994
	Russian Federation	Far Eastern State Medical University	December 14, 1995
		M. V. Lomonosov Moscow State University	September 20, 2000
		Irkutsk State University	March 20, 2002
	Ireland	Environmental Protection Agency	June 13, 2019
	Romania	Hyperion University	September 11, 1998
	Alexandru Ioan Cuza University of Iasi	Alexandru Ioan Cuza University of Iasi	March 9, 2020
		University of Trier	May 3, 1999
	Federal Republic of Germany	University of Trier	May 3, 1999
	Hungary	University of Debrecen	December 22, 2000
	Italian Republic	University of Catania	March 27, 2018
		University of Turin	November 11, 2020
		Ca' Foscari University of Venice Department of Asian and North African Studies	March 29, 2023
	Bosnia and Herzegovina	University of East Sarajevo	February 15, 2023
	Kingdom of Spain	The University of Extremadura	February 20, 2023
Oceania	New Zealand	University of Otago	September 20, 2000
		Auckland University of Technology	December 12, 2001
East Asia	People's Republic of China	Harbin Normal University	August 1, 1995
		Yanbian University	August 28, 2000
		Zhengzhou University	October 12, 2000
		Dalian University of Technology	December 28, 2009
		Xinjiang Institute of Engineering	September 23, 2016
		Qingdao Agricultural University	December 26, 2016
		Taiyuan University of Technology	April 19, 2017
		Shenyang University of Chemical Technology	November 20, 2017
		Central South University of Forestry and Technology	June 5, 2019
		Northeastern University	December 1, 2019
		Guangdong University of Technology	May 27, 2020
		Liaoning Petrochemical University	March 30, 2022
	Republic of Korea	Nam Seoul University	June 1, 2001
		Kyungpook National University	July 11, 2001
		Pusan National University	December 12, 2001
		Kyonggi University	September 25, 2002
	Taiwan	National University of Kaohsiung	November 17, 2016
		Kainan University	November 18, 2016
		Mackay Medical College	October 30, 2017
		National Pingtung University	April 10, 2018
		Chinese Culture University	February 19, 2019
		National Taipei University of Education	August 16, 2022
		Chiang Mai University	November 2, 2000
Southeast Asia	Kingdom of Thailand	Khon Kaen University	May 6, 2008
		Thammasat University	April 14, 2017
		Universiti Tunku Abdul Rahman	April 11, 2017
	Malaysia	Institut Teknologi Bandung	May 2, 2017
	Republic of Indonesia	National Nuclear Energy Agency	October 3, 2017
	Socialist Republic of Viet Nam	An Giang University	July 2, 2018
		Tashkent State Agrarian University	September 19, 2016
Central Asia	Republic of Uzbekistan	Samarkand Agricultural Institute/University	September 22, 2016
	Turkmenistan	Turkmen Agricultural University named after S.A.Nyyazov	March 28, 2019
Africa	People's Democratic Republic of Algeria	University of Science and Technology of Oran Mohamed Boudiaf	March 5, 2018

International Academic Exchange Agreements (Discipline-specific Agreements)

As of May 1, 2023

Note	Country		University	Date of Agreement
Faculty of Humanities and Social Sciences	Europe	Republic of Finland	Ruralia Institute, University of Helsinki	September 7, 2009
	East Asia	People's Republic of China	School of Foreign Languages, Beijing Institute of Technology	March 12, 2022
Faculty of Education	North America / South America	U.S.A.	University of South Carolina	July 20, 1994
School of Medicine	North America / South America	U.S.A.	University of Tennessee Center for the Health Sciences	May 19, 1982
		Jamaica	The University of the West Indies	February 25, 2002
	Europe	Republic of Slovenia	Faculty of Medicine, University of Ljubljana	November 28, 2014
	East Asia	People's Republic of China	China Medical University	October 25, 2005
Graduate School of Health Sciences	North America / South America	U.S.A.	School of Nursing and Dental Hygiene, University of Hawai'i at Manoa	August 29, 2019
	Europe	Kingdom of Sweden	Centre for Radiation Protection Research, Stockholm University	March 6, 2013
	East Asia	Taiwan	College of Nursing, Taipei Medical University	September 26, 2019
Faculty of Agriculture and Life Science	East Asia	People's Republic of China	Xishuangbanna Tropical Botanical Garden, Chinese Academy of Sciences	October 29, 2018
			College of Horticulture, ShenYang Agricultural University	April 26, 2021
		Republic of Korea	College of Agriculture and Life Sciences, Kangwon National University	November 5, 2018
			The College of Agriculture, Life & Environment Sciences, Chungbuk National University	December 6, 2018
	Southeast Asia	Kingdom of Thailand	College of Agriculture and Natural Resources, National Chung Hsing University	November 15, 2017
			School of Energy and Environment, University of Phayao	August 6, 2018
		India	School of Management and Information Sciences, University of Phayao	August 6, 2018
			Faculty of Science, Alagappa University	August 7, 2018
	South Asia	People's Republic of Bangladesh	Faculty of Arts, Alagappa University	August 7, 2018
			Faculty of Agriculture, Hajee Mohammad Danesh Science & Technology University	November 24, 2018
Graduate School Regional Studies	East Asia	People's Republic of China	College of International Development and Global Agriculture, China Agricultural University	June 1, 2020
Institute of Radiation Emergency Medicine	Europe	Hungary	University of Pannonia, Faculty of Engineering, Institute of Radiochemistry and Radioecology	March 18, 2013
		French Republic	Faculty of Physics and Engineering, University of Strasbourg	October 30, 2019
	East Asia	People's Republic of China	National Institute for Radiological Protection, China CDC	May 2, 2016
			School of Radiation Medicine and Protection and Radiation Medicine and Interdisciplinary Sciences, Soochow University	May 21, 2018
			Institute of Radiation Medicine, Fudan University	March 12, 2019
			Institute of Nuclear Applied Technology, East China University of Technology	September 14, 2020
		Republic of Korea	College of Physics and Electronic Engineering, Hengyang Normal University	September 30, 2021
			Korea Institute of Radiological and Medical Sciences	January 21, 2013
	Southeast Asia	Kingdom of Thailand	Dongnam Institute of Radiological & Medical Sciences	June 14, 2016
		Socialist Republic of Viet Nam	Faculty of Engineering, Chulalongkorn University	December 21, 2018
			Faculty of Science, Kasetsart University	December 6, 2022
		Republic of the Philippines	Institute for Nuclear Science and Technology, Vietnam Atomic Energy Institute	November 22, 2013
		Republic of Indonesia	The Philippine Nuclear Research Institute	June 30, 2015
			Center for Technology of Radiation Safety and Metrology, National Nuclear Energy Agency of Indonesia	June 18, 2021
	South Asia	India	Faculty of Medicine, Diponegoro University	March 6, 2023
			Centre for Advanced Research in Environmental Radioactivity, Mangalore University	August 19, 2019
		People's Republic of Bangladesh	Atomic Energy Centre, Dhaka, Bangladesh Atomic Energy Commission	October 15, 2018
	Africa	Federal Republic of Nigeria	Department of Physics, Federal University of Agriculture Abeokuta	September 30, 2021
Institute of Regional Innovation	East Asia	People's Republic of China	School of Chemical Engineering, Sichuan University	June 8, 2016
			School of Chemistry and Environmental Engineering Shanxi Datong University	May 22, 2019
	Southeast Asia	Republic of Indonesia	Faculty of Mathematic and Natural Sciences Department of Chemistry Sriwijaya University	February 13, 2019
		Kingdom of Thailand	Faculty of Science, Chulalongkorn University	May 25, 2021
	Europe	Kingdom of Denmark	Department of Wind and Energy Systems, Technical University of Denmark	March 30, 2023

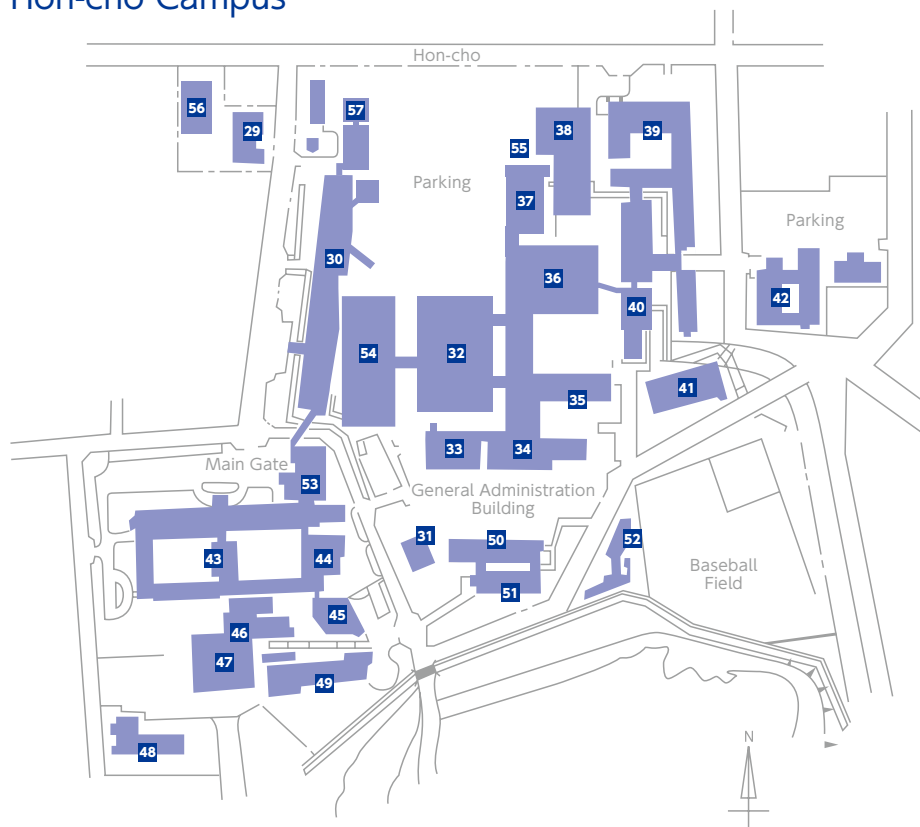


Bunkyo-cho Campus

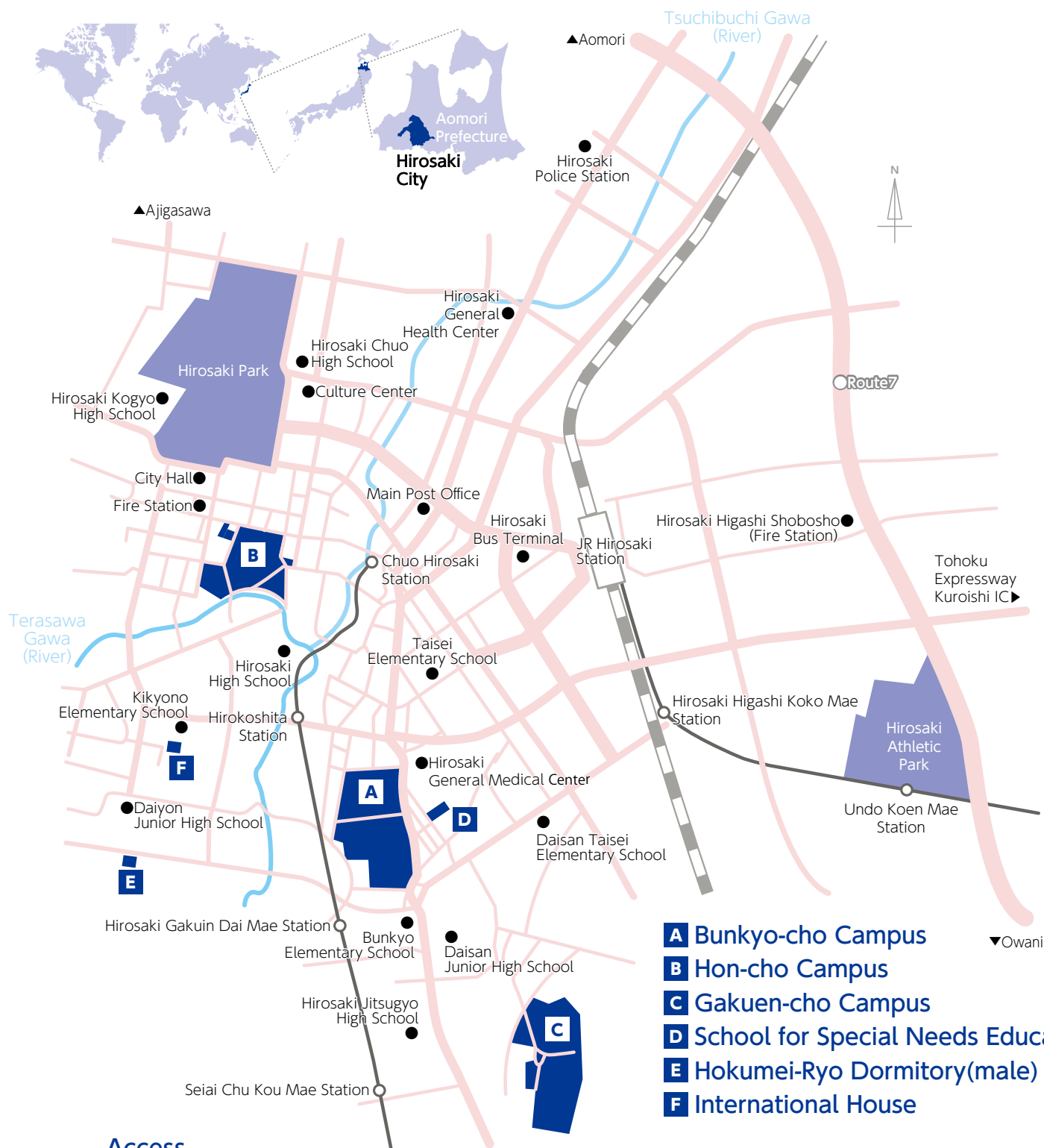


- 01 Hirosaki Higher School Foreign Lecturer Residence (Hirodai Cafe)
- 02 Information (Guard Gate)
- 03 Administration Bureau
- 04 Health Administration Center
- 05 50th Anniversary Auditorium
- 06 General Education Building
- 07 Faculty of Humanities and Social Sciences Building
- 08 University Library
- 09 University Center 10 Commons
- 11 Faculty of Education Building
- 12 University Museum
- 13 Center for Education Research and Practice
- 14 Training Camp Center
- 15 Gymnasium No.1 16 Kyudo Hall
- 17 Earthquake and Volcano Observatory
- 18 Information Management Headquarters, Information Technology Center
- 19 Gene Research Center
- 20 60th Anniversary Auditorium 'Collabo HiroDai'
- 21 Collaboration Center
- 22 Faculty of Science and Technology Building No.1
- 23 Faculty of Science and Technology Building No.2
- 24 Faculty of Agriculture and Life Science Building
- 25 Greenhouse
- 26 Gymnasium No.2 27 Martial Arts Hall
- 28 Building for Extracurricular Activities

Hon-cho Campus



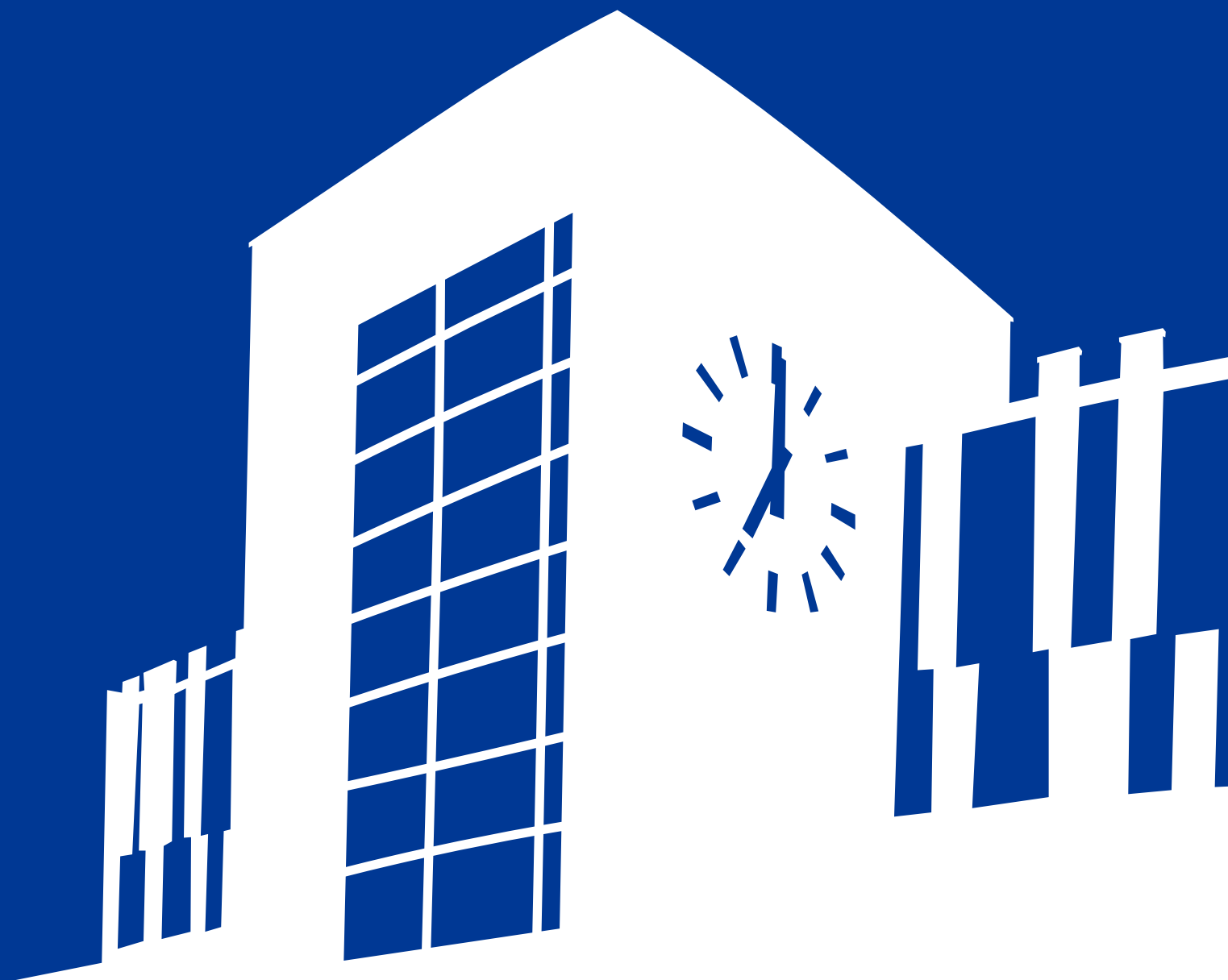
- 29 Medical Communications Center
- 30 Clinical Research Building
- 31 Lecture Building
- 32 Outpatient Clinic
- 33 Energy Center
- 34 First Ward
- 35 Second Ward
- 36 Central Clinical Service Building
- 37 Advanced Emergency and Disaster Medical Center
- 38 Multi-storey Car Parking
- 39 Graduate School of Health Sciences, School of Clinical Psychological Science
- 40 Multidiscipline Medicine Building Institute of Radiation Emergency Medicine
- 41 Gymnasium 42 Lodging for Nurses
- 43 Graduate School of Medicine
- 44 Hirosaki University Medical Branch Library
- 45 Foundation Lecture Building
- 46 Radioisotope Laboratory
- 47 Extracurricular Activity Equipment Storage Area
- 48 Shared Use Institution, Hon-cho Campus Center for Advanced Medical Research
- 49 Institute of Brain Science
- 50 Student Support Center 1 (Learning Center)
- 51 Hirodai Nursery
- 52 Student Support Center 2 (Student Friendship Center)
- 53 Innovation Center for Health Promotion
- 54 Inpatient Ward
- 55 Triage Unit (temporary)
- 56 West Building
- 57 Multi-purpose Building



Access

Tokyo	Tohoku Shinkansen (3h10m)	Shin Aomori Station	JR Super Express (30m)	*6	100yen bus (Dotemachi Line) (15m)	University Hospital Mae	Hon-cho Campus
	Airplane (1h20m)	Aomori Airport	Konan Bus (Local Bus) (55m)		Komagoshi Line (15m)		
Sapporo	JR Super Express (3h30m)	Shin Hakodate Hokuto Station	Hokkaido Shinkansen (1h10m)	*8	Kinzoku Danchi/Sakuragaoka Line (15m)	Hon-cho	Bunkyo-cho Campus
	Airplane (45m)	Aomori Airport	Konan Bus (Local Bus) (55m)		Koguriyama/Oinomori Line (15m)	Hirosaki Daigaku-Mae or Hirosaki Nogakuseimei-kagakubu-Mae	
Morioka	Highway Bus (Yodel) (2h15m)			*3	Gakuen-cho Line (15m)		Gakuen-cho Campus
Sendai	Highway Bus (Castle) (4h20m)				Gakuen-cho Line (25m)	Gakuen-cho	

*Chuo Exit Busstop



National University Corporation Hirosaki University

1 Bunkyo-cho, Hirosaki, Aomori, 036-8560, Japan

URL <https://www.hirosaki-u.ac.jp/en/>

Designed by SEITO Shinichiro (Completed Graduate School of Education), Under the Supervision
of ISHIKAWA Yoshiro (Former Professor, Faculty of Education, Hirosaki University)



Hirosaki University
website



HIROSAKI
UNIVERSITY